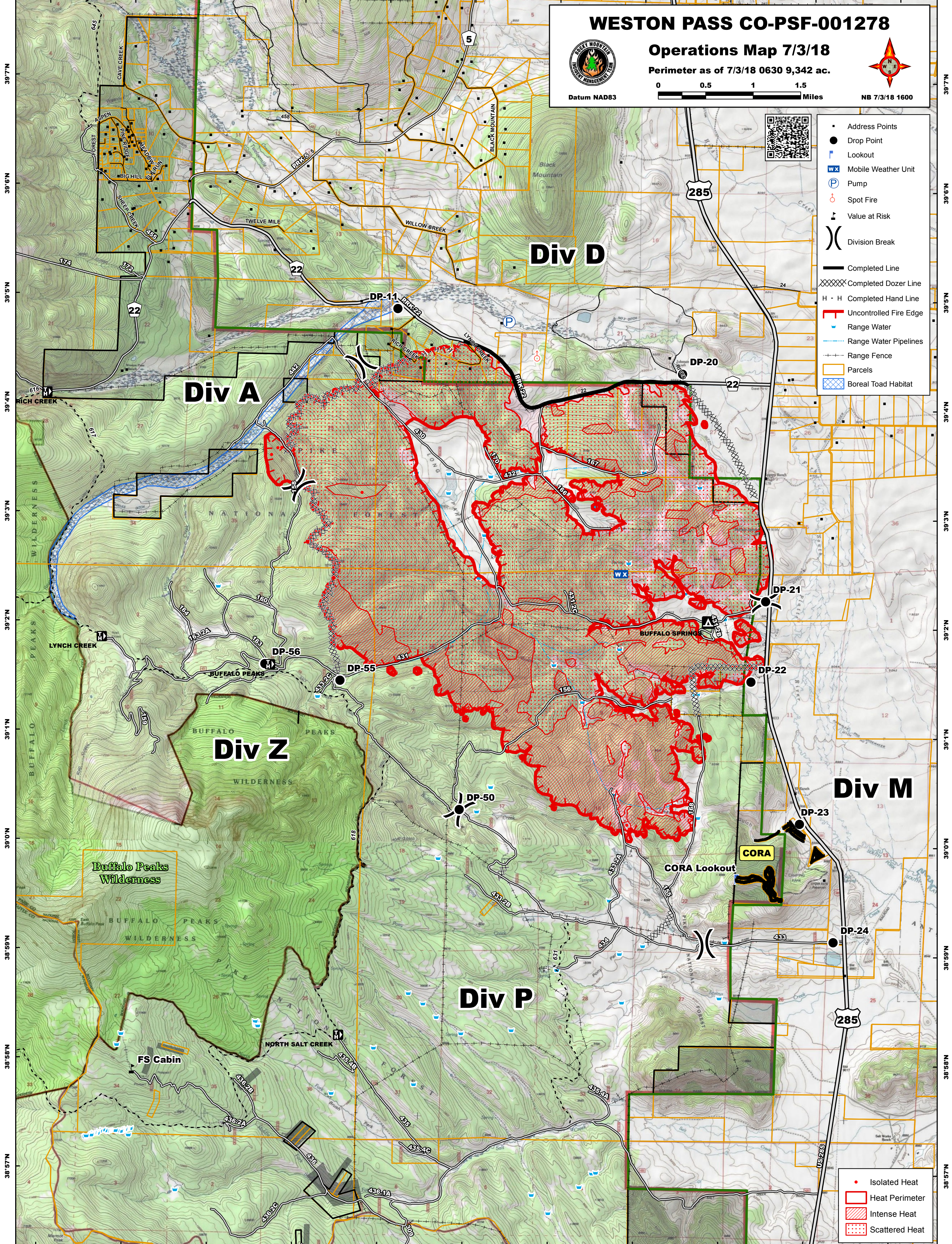


106°7'W 106°6'W 106°5'W 106°4'W 106°3'W 106°2'W 106°1'W 106°0'W 105°59'W 105°58'W 105°57'W



WESTON PASS CO-PSF-001278

Operations Map 7/3/18

Perimeter as of 7/3/18 0630 9,342 ac.

Datum NAD83

0 0.5 1 1.5 Miles

NB 7/3/18 1600

- Address Points
- Drop Point
- ⚡ Lookout
- WX Mobile Weather Unit
- P Pump
- ⊕ Spot Fire
- ⚠ Value at Risk
-) Division Break
- Completed Line
- XXXXX Completed Dozer Line
- H - H Completed Hand Line
- ▬ Uncontrolled Fire Edge
- ▬ Range Water
- ▬ Range Water Pipelines
- ▬ Range Fence
- ▭ Parcels
- ▭ Boreal Toad Habitat

- Isolated Heat
- ▭ Heat Perimeter
- ▭ Intense Heat
- ▭ Scattered Heat

39°7'N 39°6'N 39°5'N 39°4'N 39°3'N 39°2'N 39°1'N 39°0'N 38°59'N 38°58'N 38°57'N

39°7'N 39°6'N 39°5'N 39°4'N 39°3'N 39°2'N 39°1'N 39°0'N 38°59'N 38°58'N 38°57'N

106°7'W 106°6'W 106°5'W 106°4'W 106°3'W 106°2'W 106°1'W 106°0'W 105°59'W 105°58'W 105°57'W