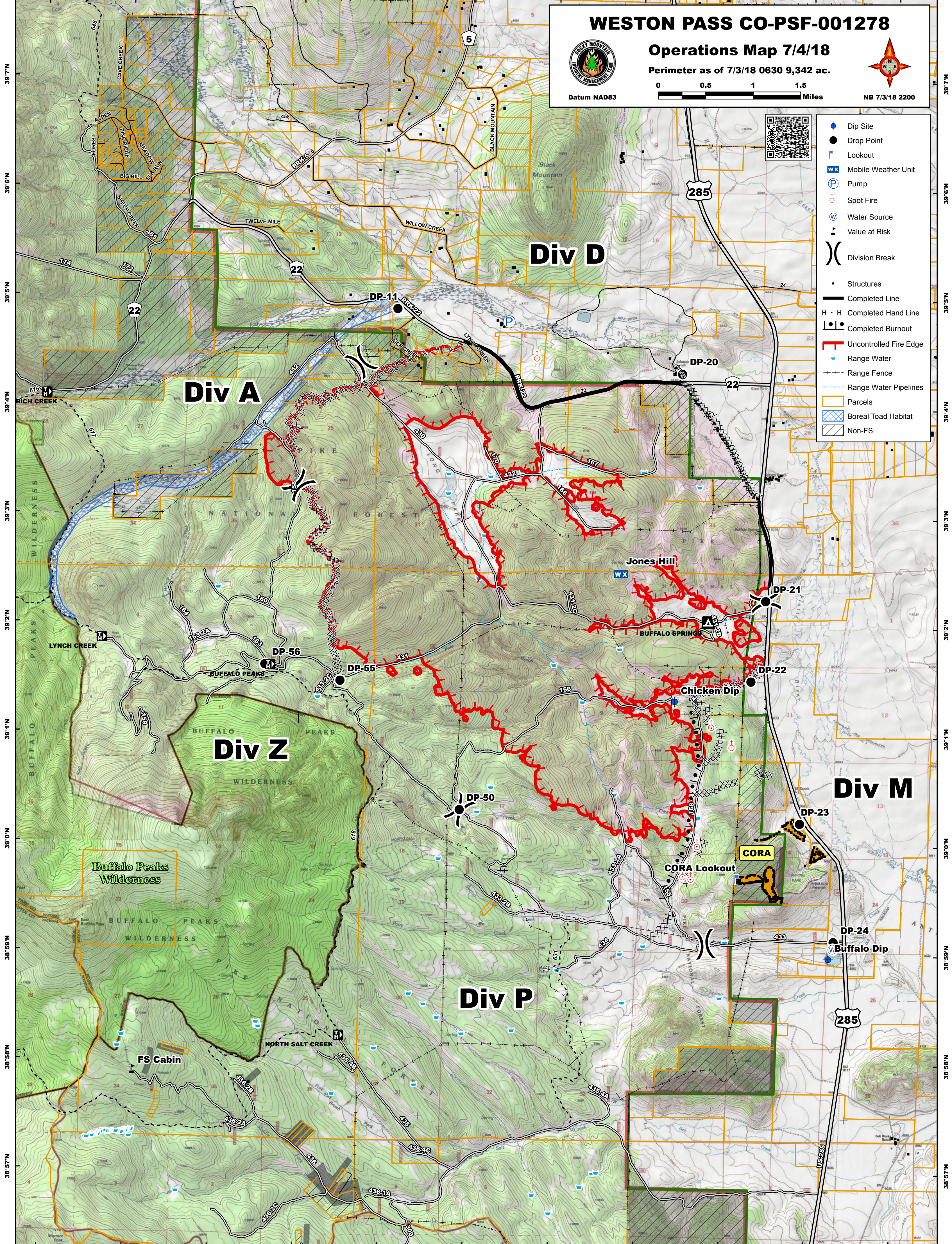


106°7'W 106°6'W 106°5'W 106°4'W 106°3'W 106°2'W 106°1'W 106°0'W 105°59'W 105°58'W 105°57'W



WESTON PASS CO-PSF-001278
Operations Map 7/4/18
 Perimeter as of 7/3/18 0630 9,342 ac.

Datum NAD83

0 0.5 1 1.5 Miles

NB 7/3/18 2200

- Dip Site
- Drop Point
- Lookout
- Mobile Weather Unit
- Pump
- Spot Fire
- Water Source
- Value at Risk
- Division Break
- Structures
- Completed Line
- Completed Hand Line
- Completed Burnout
- Uncontrolled Fire Edge
- Range Water
- Range Fence
- Range Water Pipelines
- Parcels
- Boreal Toad Habitat
- Non-FS

39°7'N 39°6'N 39°5'N 39°4'N 39°3'N 39°2'N 39°1'N 39°0'N 38°59'N 38°58'N 38°57'N

39°7'N 39°6'N 39°5'N 39°4'N 39°3'N 39°2'N 39°1'N 39°0'N 38°59'N 38°58'N 38°57'N

106°7'W 106°6'W 106°5'W 106°4'W 106°3'W 106°2'W 106°1'W 106°0'W 105°59'W 105°58'W 105°57'W