



# WESTON PASS CO-PSF-001278

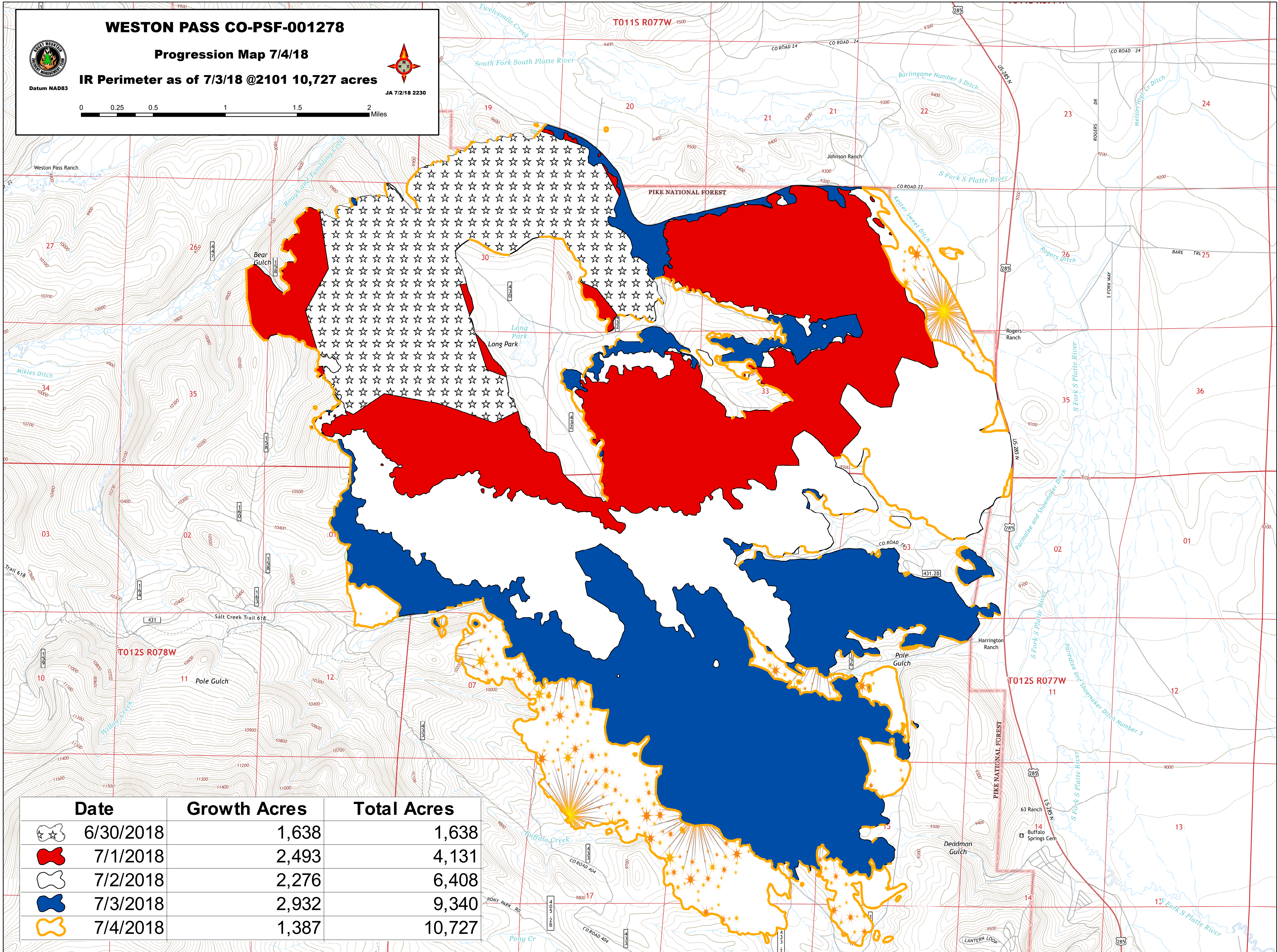
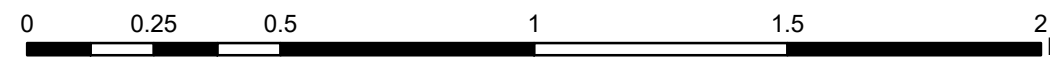
## Progression Map 7/4/18

### IR Perimeter as of 7/3/18 @2101 10,727 acres

Datum NAD83



JA 7/2/18 2230



Date	Growth Acres	Total Acres
6/30/2018	1,638	1,638
7/1/2018	2,493	4,131
7/2/2018	2,276	6,408
7/3/2018	2,932	9,340
7/4/2018	1,387	10,727