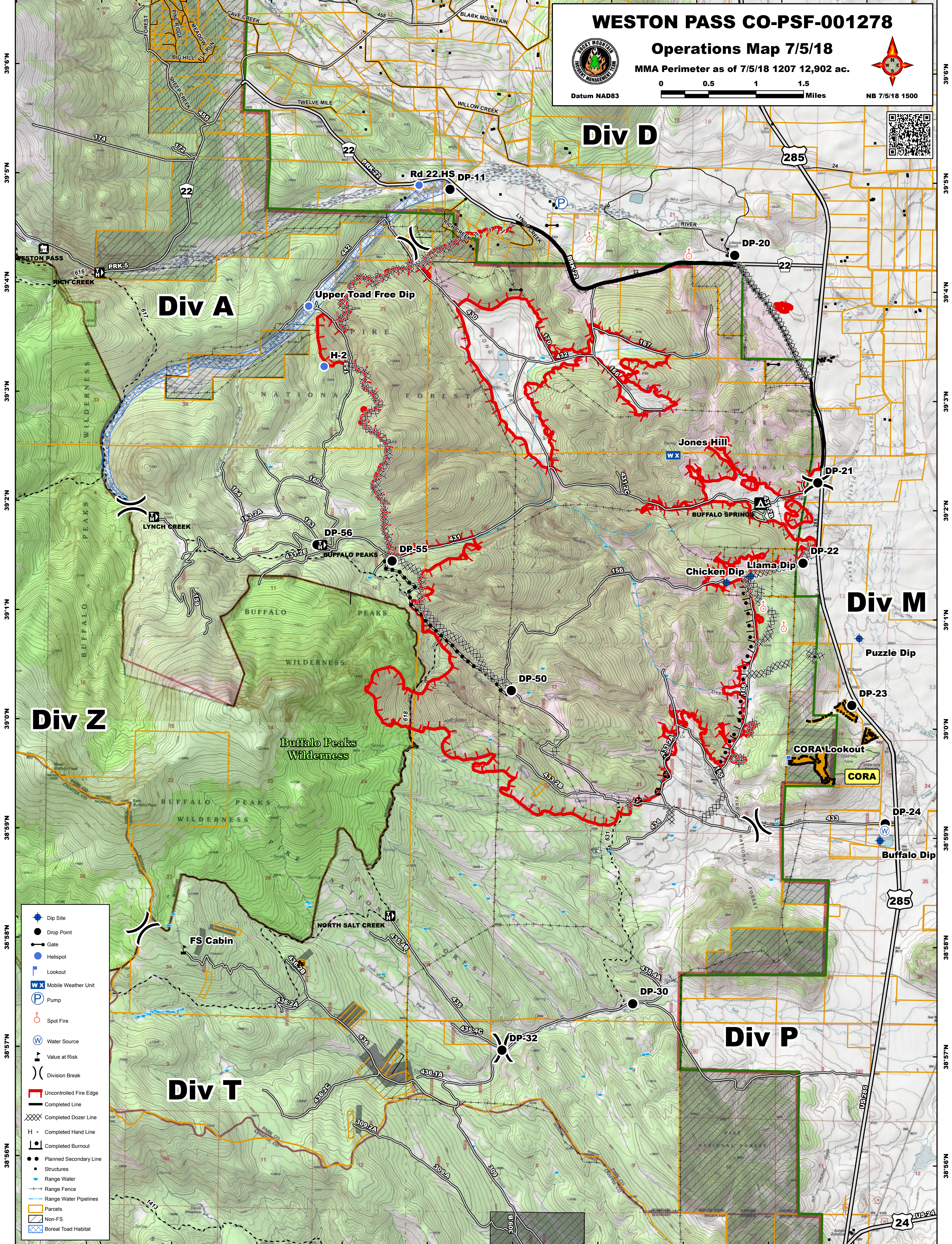


106°8'W 106°7'W 106°6'W 106°5'W 106°4'W 106°3'W 106°2'W 106°1'W 106°0'W 105°59'W 105°58'W



WESTON PASS CO-PSF-001278
Operations Map 7/5/18
 MMA Perimeter as of 7/5/18 1207 12,902 ac.
 Datum NAD83
 0 0.5 1 1.5 Miles
 NB 7/5/18 1500

39°6'N 39°5'N 39°4'N 39°3'N 39°2'N 39°1'N 39°0'N 38°59'N 38°58'N 38°57'N 38°56'N

39°6'N 39°5'N 39°4'N 39°3'N 39°2'N 39°1'N 39°0'N 38°59'N 38°58'N 38°57'N 38°56'N

106°7'W 106°6'W 106°5'W 106°4'W 106°3'W 106°2'W 106°1'W 106°0'W 105°59'W 105°58'W

- Dip Site
- Drop Point
- Gate
- Hellsport
- Lookout
- Mobile Weather Unit
- Pump
- Spot Fire
- Water Source
- Value at Risk
- Division Break
- Uncontrolled Fire Edge
- Completed Line
- Completed Dozer Line
- Completed Hand Line
- Completed Burnout
- Planned Secondary Line
- Structures
- Range Water
- Range Fence
- Range Water Pipelines
- Parcels
- Non-FS
- Boreal Toad Habitat