




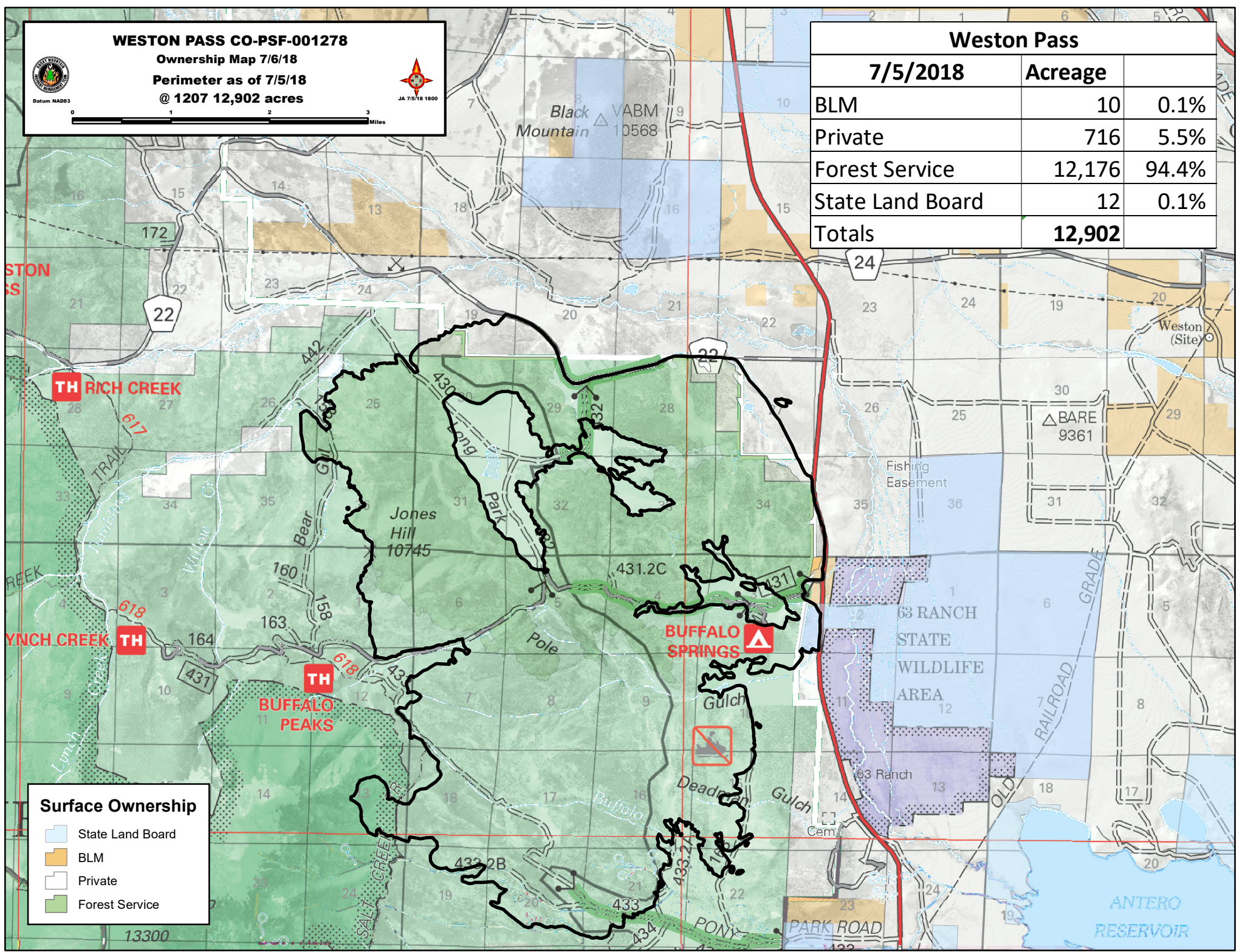
WESTON PASS CO-PSF-001278
Ownership Map 7/6/18
Perimeter as of 7/5/18
@ 12,902 acres





Datum NAD83
 JA 7/5/18 1800



Weston Pass		
	7/5/2018	Acreage
BLM	10	0.1%
Private	716	5.5%
Forest Service	12,176	94.4%
State Land Board	12	0.1%
Totals	12,902	



Surface Ownership

-  State Land Board
-  BLM
-  Private
-  Forest Service