



# WESTON PASS CO-PSF-001278

Progression Map 7/5/18

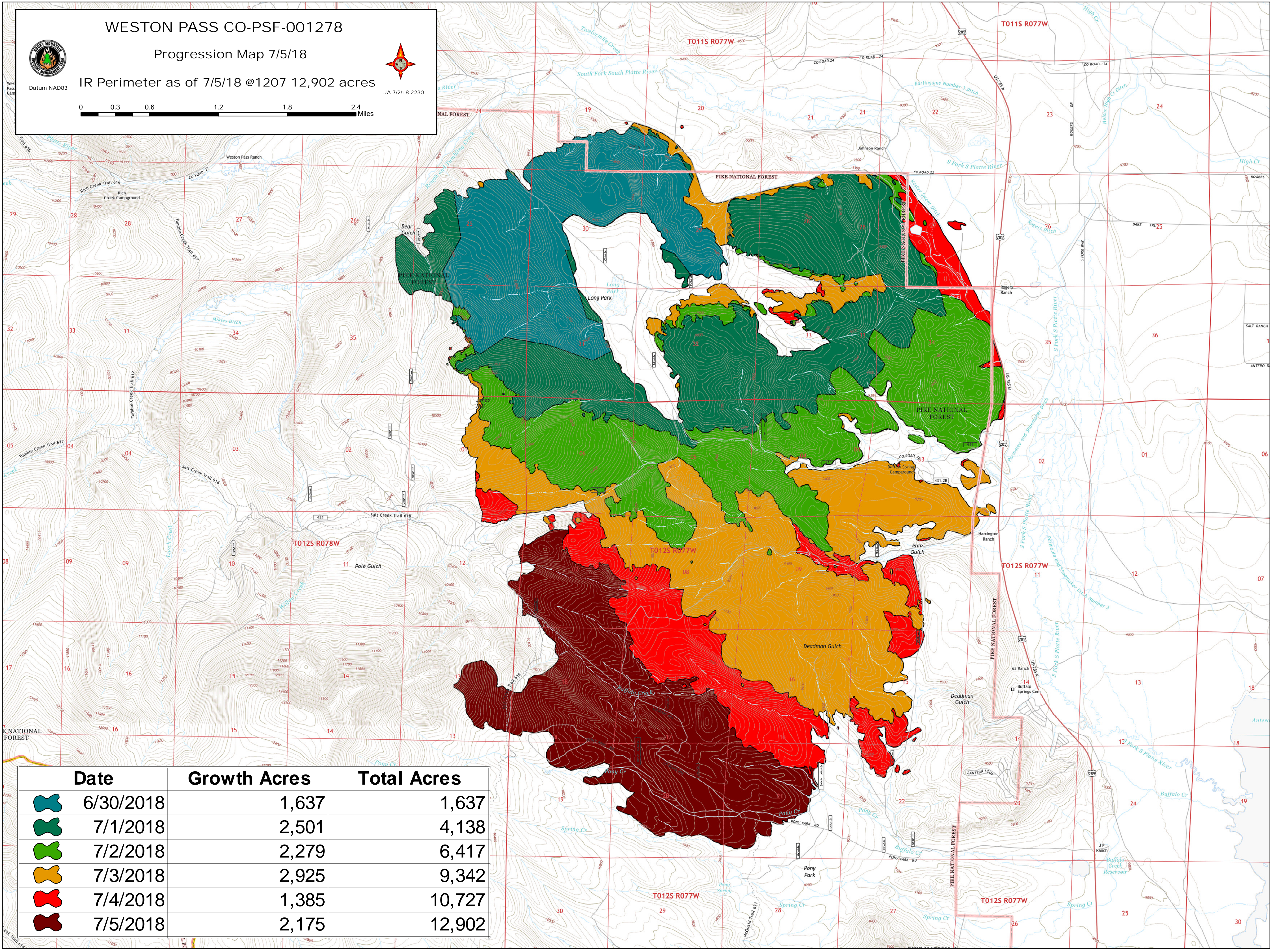
IR Perimeter as of 7/5/18 @1207 12,902 acres



JA 7/2/18 2230

Datum NAD83

0 0.3 0.6 1.2 1.8 2.4 Miles



Date	Growth Acres	Total Acres
6/30/2018	1,637	1,637
7/1/2018	2,501	4,138
7/2/2018	2,279	6,417
7/3/2018	2,925	9,342
7/4/2018	1,385	10,727
7/5/2018	2,175	12,902