

106°7'W 106°6'W 106°5'W 106°4'W 106°3'W 106°2'W 106°1'W 106°0'W 105°59'W 105°58'W



WESTON PASS CO-PSF-001278

Ops Imagery 7/7/18

Perimeter as of 7/5/18 1849 12,981 ac.

Datum NAD83

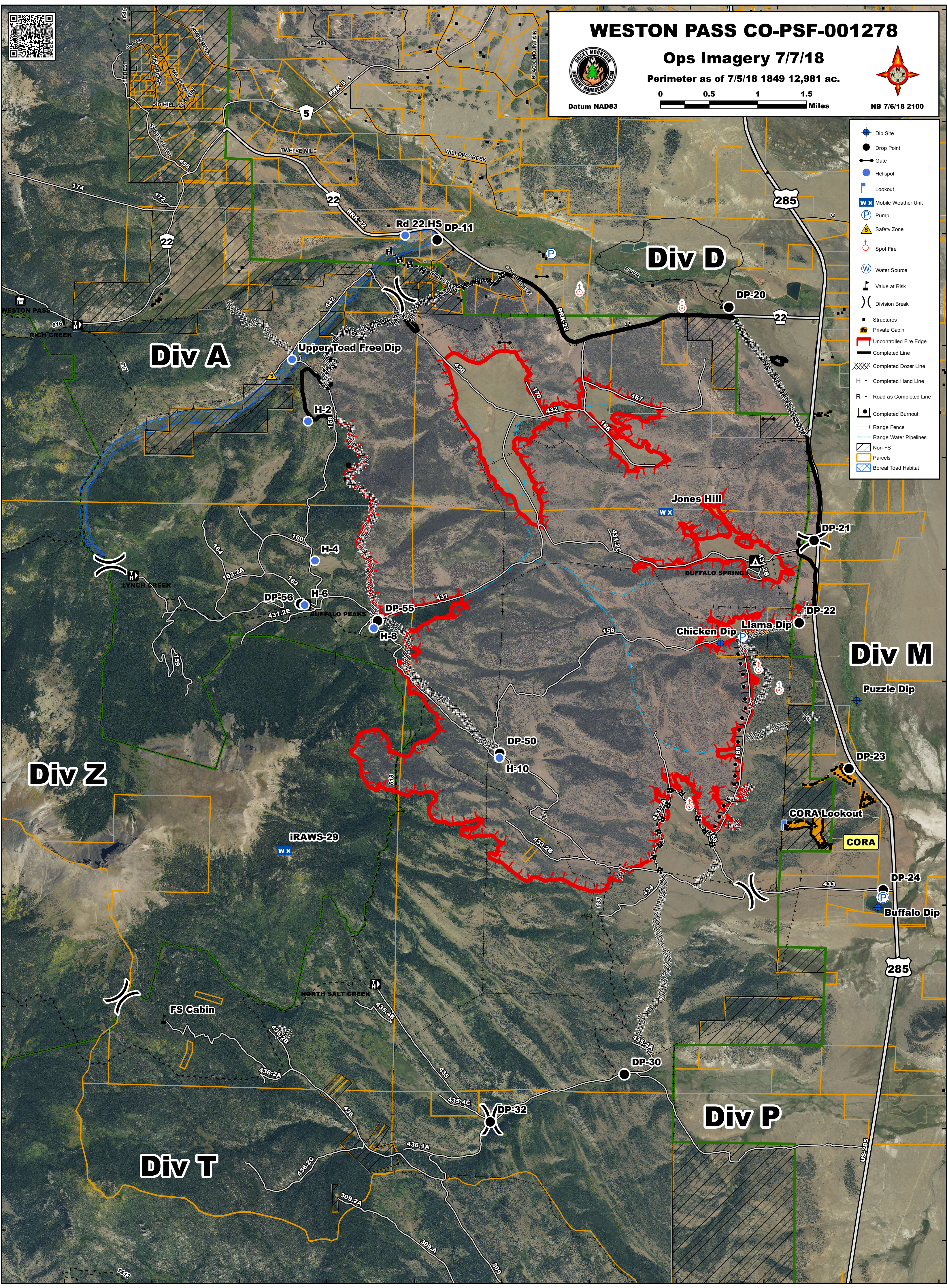


NB 7/6/18 2100

39°6'N
39°5'N
39°4'N
39°3'N
39°2'N
39°1'N
39°0'N
38°59'N
38°58'N
38°57'N
38°56'N

39°7'N
39°6'N
39°5'N
39°4'N
39°3'N
39°2'N
39°1'N
39°0'N
38°59'N
38°58'N
38°57'N
38°56'N

- Dip Site
- Drop Point
- Gate
- Helispot
- Lookout
- Mobile Weather Unit
- Pump
- Safety Zone
- Spot Fire
- Water Source
- Value at Risk
- Division Break
- Structures
- Private Cabin
- Uncontrolled Fire Edge
- Completed Line
- Completed Dozer Line
- Completed Hand Line
- Road as Completed Line
- Completed Burnout
- Range Fence
- Range Water Pipelines
- Non-FS
- Parcels
- Boreal Toad Habitat



106°7'W 106°6'W 106°5'W 106°4'W 106°3'W 106°2'W 106°1'W 106°0'W 105°59'W 105°58'W 105°57'W