



WESTON PASS CO-PSF-001278

Ops Imagery 7/8/18

Perimeter as of 7/7/18 0245 13,019 ac.

Datum NAD83

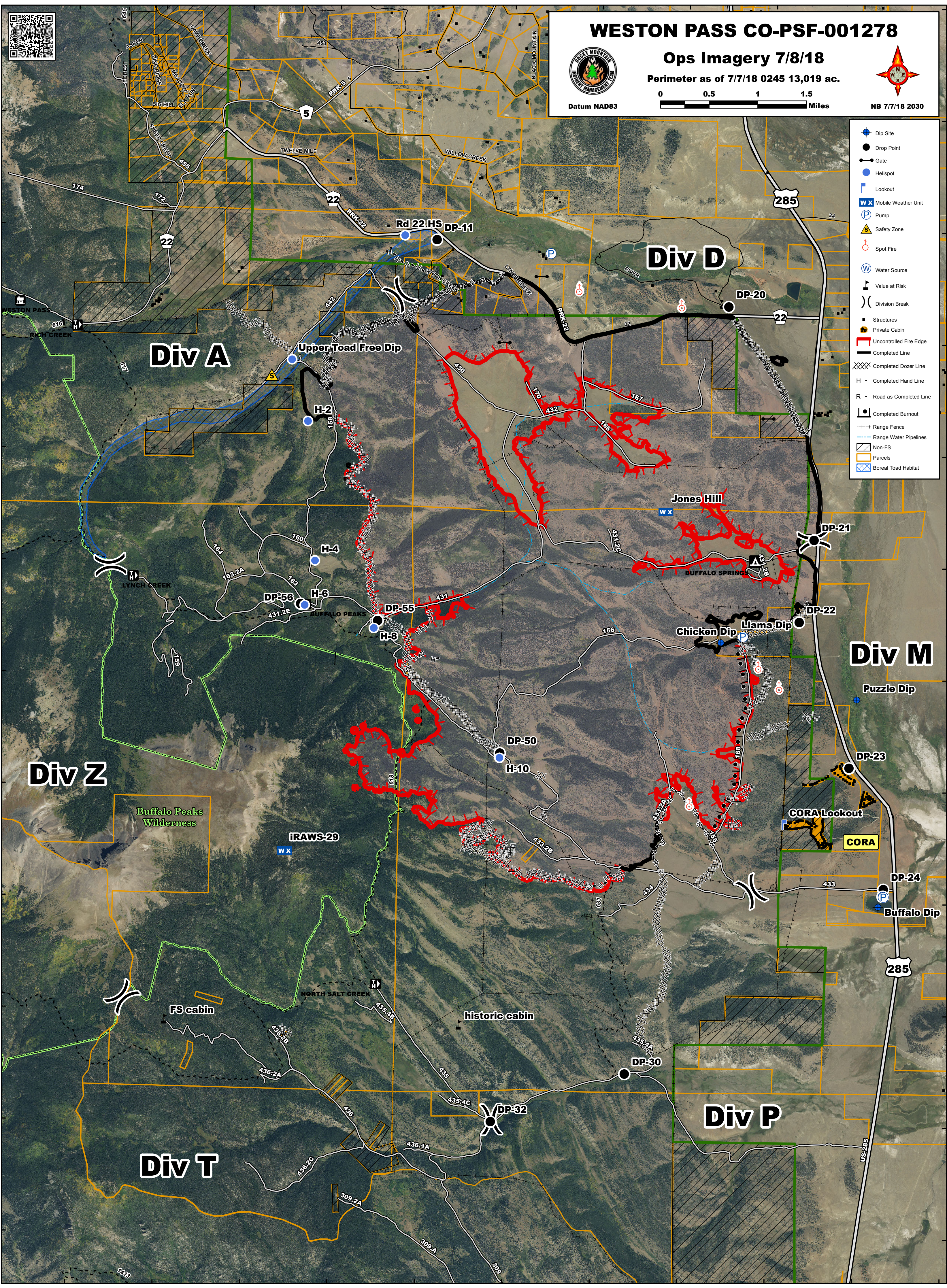


NB 7/7/18 2030

39°6'N
39°5'N
39°4'N
39°3'N
39°2'N
39°1'N
39°0'N
38°59'N
38°58'N
38°57'N
38°56'N

39°7'N
39°6'N
39°5'N
39°4'N
39°3'N
39°2'N
39°1'N
39°0'N
38°59'N
38°58'N
38°57'N
38°56'N

- Dip Site
- Drop Point
- Gate
- Helispot
- Lookout
- Mobile Weather Unit
- Pump
- Safety Zone
- Spot Fire
- Water Source
- Value at Risk
- Division Break
- Structures
- Private Cabin
- Uncontrolled Fire Edge
- Completed Line
- Completed Dozer Line
- Completed Hand Line
- Road as Completed Line
- Completed Burnout
- Range Fence
- Range Water Pipelines
- Non-FS
- Parcels
- Boreal Toad Habitat



Div A

Div D

Div M

Div P

Div T

Div Z

Buffalo Peaks Wilderness

Jones Hill

Chicken Dip

Llama Dip

Puzzle Dip

CORA Lookout

CORA

Buffalo Dip

historic cabin

FS cabin

IRAWS-29

NORTH SALT CREEK

Upper Toad Free Dip

Rd 22 HS DP-11

DP-20

DP-21

DP-22

DP-23

DP-24

DP-55

DP-50

DP-30

DP-32

DP-56

174

22

22

285

285

US-285

WESTON PASS
RICH CREEK
LYNCH CREEK
BUFFALO PEAKS

ASPEN FOREST
BIG HILL
SHEEP CREEK
CAVE CREEK
MADONNA
ELK RUN

PRK-25
TWELVE MILE
WILLOW CREEK
BLACK MOUNTAIN

PRK-22
RIVER
Lynch Creek

PRK-22
RIVER

PRK-22
RIVER

PRK-22
RIVER

172
616
610
618

342
158
160
163
163.2A
431.2E
163

430
170
432
167
431
431.2B
431.2C
431.2D
431.2E
431.2F
431.2G
431.2H
431.2I
431.2J
431.2K
431.2L
431.2M
431.2N
431.2O
431.2P
431.2Q
431.2R
431.2S
431.2T
431.2U
431.2V
431.2W
431.2X
431.2Y
431.2Z

432
166
431
431.2B
431.2C
431.2D
431.2E
431.2F
431.2G
431.2H
431.2I
431.2J
431.2K
431.2L
431.2M
431.2N
431.2O
431.2P
431.2Q
431.2R
431.2S
431.2T
431.2U
431.2V
431.2W
431.2X
431.2Y
431.2Z

433
156
433.2A
433.2B
433.2C
433.2D
433.2E
433.2F
433.2G
433.2H
433.2I
433.2J
433.2K
433.2L
433.2M
433.2N
433.2O
433.2P
433.2Q
433.2R
433.2S
433.2T
433.2U
433.2V
433.2W
433.2X
433.2Y
433.2Z

434
168
434.2A
434.2B
434.2C
434.2D
434.2E
434.2F
434.2G
434.2H
434.2I
434.2J
434.2K
434.2L
434.2M
434.2N
434.2O
434.2P
434.2Q
434.2R
434.2S
434.2T
434.2U
434.2V
434.2W
434.2X
434.2Y
434.2Z

435
169
435.2A
435.2B
435.2C
435.2D
435.2E
435.2F
435.2G
435.2H
435.2I
435.2J
435.2K
435.2L
435.2M
435.2N
435.2O
435.2P
435.2Q
435.2R
435.2S
435.2T
435.2U
435.2V
435.2W
435.2X
435.2Y
435.2Z

436
170
436.2A
436.2B
436.2C
436.2D
436.2E
436.2F
436.2G
436.2H
436.2I
436.2J
436.2K
436.2L
436.2M
436.2N
436.2O
436.2P
436.2Q
436.2R
436.2S
436.2T
436.2U
436.2V
436.2W
436.2X
436.2Y
436.2Z

437
171
437.2A
437.2B
437.2C
437.2D
437.2E
437.2F
437.2G
437.2H
437.2I
437.2J
437.2K
437.2L
437.2M
437.2N
437.2O
437.2P
437.2Q
437.2R
437.2S
437.2T
437.2U
437.2V
437.2W
437.2X
437.2Y
437.2Z

39°6'N
39°5'N
39°4'N
39°3'N
39°2'N
39°1'N
39°0'N
38°59'N
38°58'N
38°57'N
38°56'N

39°7'N
39°6'N
39°5'N
39°4'N
39°3'N
39°2'N
39°1'N
39°0'N
38°59'N
38°58'N
38°57'N
38°56'N