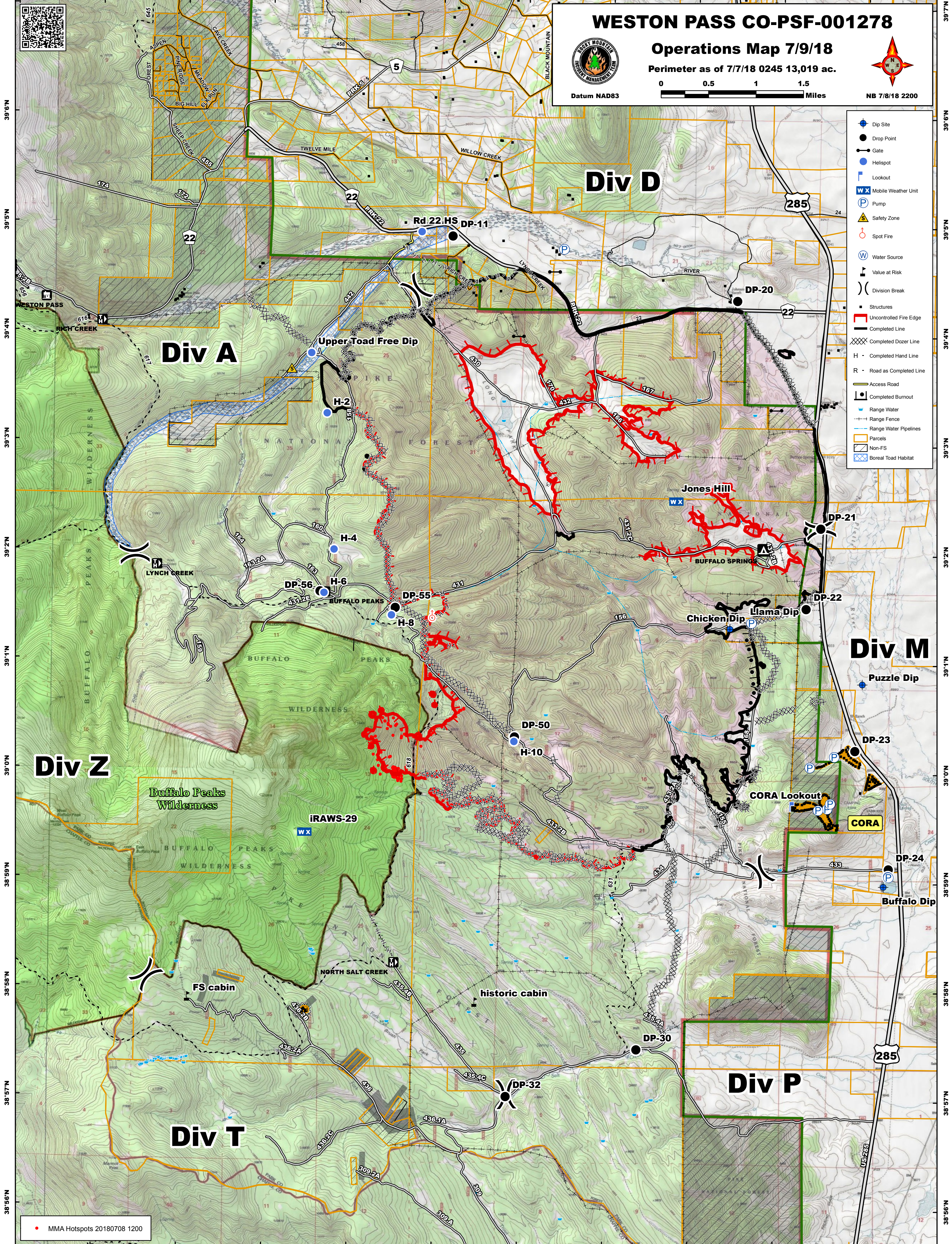



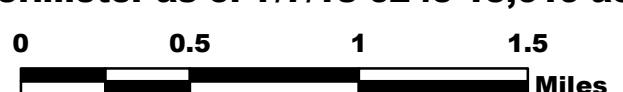
106°8'W 106°7'W 106°6'W 106°5'W 106°4'W 106°3'W 106°2'W 106°1'W 106°0'W 105°59'W 105°58'W




WESTON PASS CO-PSF-001278
Operations Map 7/9/18
 Perimeter as of 7/7/18 0245 13,019 ac.



Datum NAD83



0 0.5 1 1.5 Miles



NB 7/8/18 2200

- Dip Site
- Drop Point
- Gate
- Helispot
- Lookout
- Mobile Weather Unit
- Pump
- Safety Zone
- Spot Fire
- Water Source
- Value at Risk
- Division Break
- Structures
- Uncontrolled Fire Edge
- Completed Line
- Completed Dozer Line
- Completed Hand Line
- Road as Completed Line
- Access Road
- Completed Burnout
- Range Water
- Range Fence
- Range Water Pipelines
- Parcels
- Non-FS
- Boreal Toad Habitat

106°7'W 106°6'W 106°5'W 106°4'W 106°3'W 106°2'W 106°1'W 106°0'W 105°59'W 105°58'W

MMA Hotspots 20180708 1200