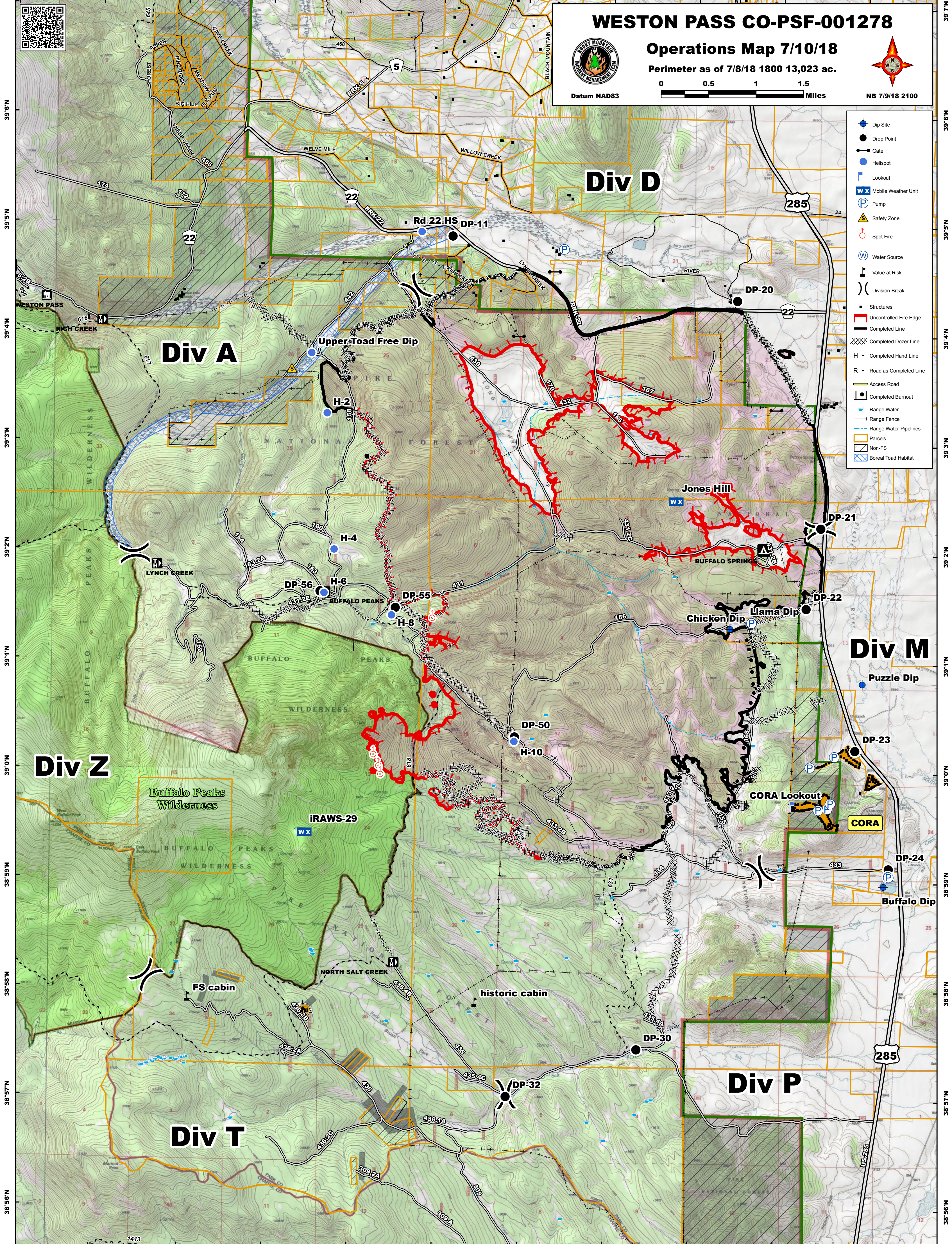




106°8'W 106°7'W 106°6'W 106°5'W 106°4'W 106°3'W 106°2'W 106°1'W 106°0'W 105°59'W 105°58'W




**WESTON PASS CO-PSF-001278**  
**Operations Map 7/10/18**  
 Perimeter as of 7/8/18 1800 13,023 ac.



Datum NAD83



Miles



NB 7/9/18 2100

- Dip Site
- Drop Point
- Gate
- Helispot
- Lookout
- Mobile Weather Unit
- Pump
- Safety Zone
- Spot Fire
- Water Source
- Value at Risk
- Division Break
- Structures
- Uncontrolled Fire Edge
- Completed Line
- Completed Dozer Line
- Completed Hand Line
- Road as Completed Line
- Access Road
- Completed Burnout
- Range Water
- Range Fence
- Range Water Pipelines
- Parcels
- Non-FS
- Boreal Toad Habitat

39°6'N 39°5'N 39°4'N 39°3'N 39°2'N 39°1'N 39°0'N 38°59'N 38°58'N 38°57'N 38°56'N

39°6'N 39°5'N 39°4'N 39°3'N 39°2'N 39°1'N 39°0'N 38°59'N 38°58'N 38°57'N 38°56'N

106°7'W 106°6'W 106°5'W 106°4'W 106°3'W 106°2'W 106°1'W 106°0'W 105°59'W 105°58'W