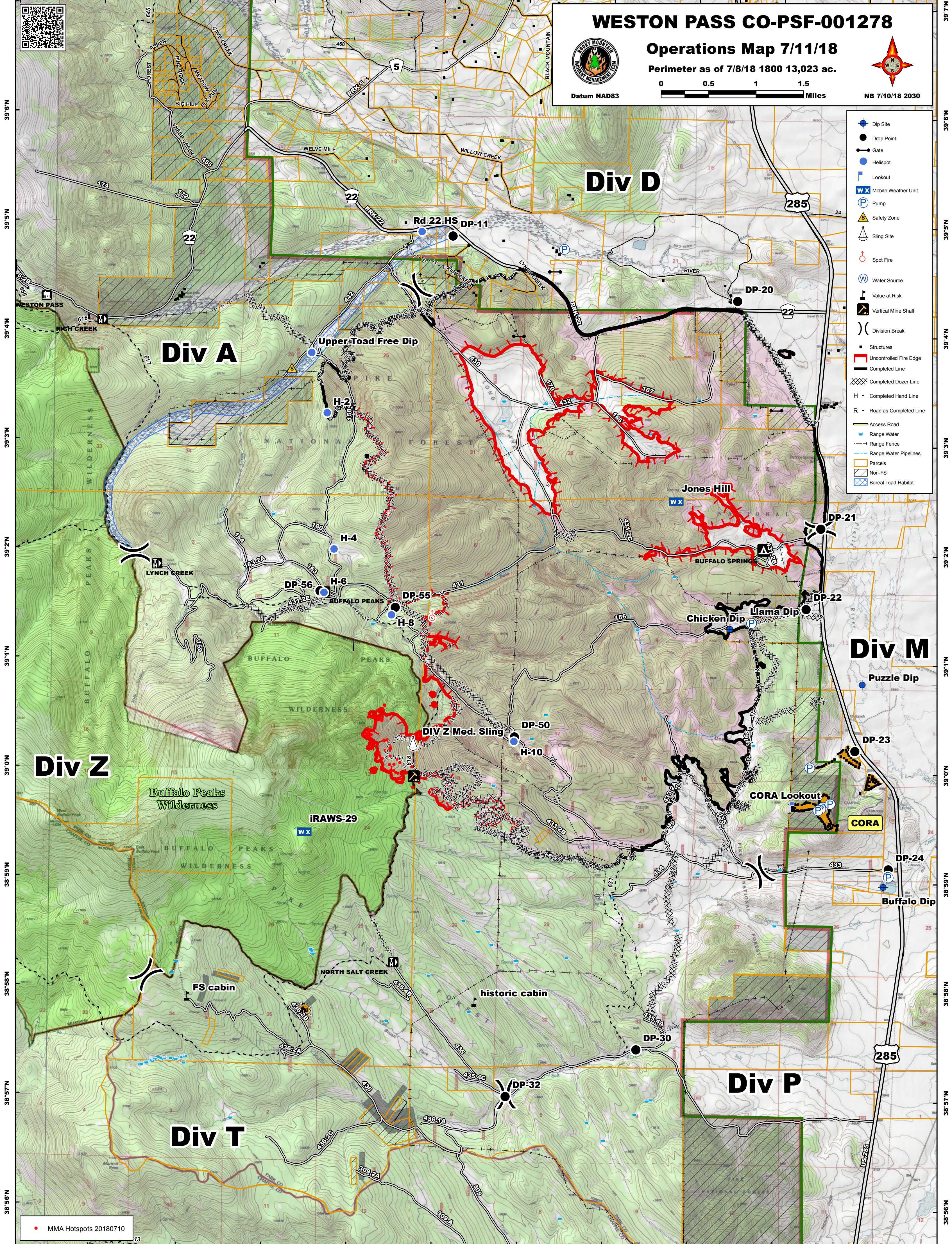


106°8'W 106°7'W 106°6'W 106°5'W 106°4'W 106°3'W 106°2'W 106°1'W 106°0'W 105°59'W 105°58'W



**WESTON PASS CO-PSF-001278**  
**Operations Map 7/11/18**  
 Perimeter as of 7/8/18 1800 13,023 ac.

Datum NAD83

0 0.5 1 1.5 Miles

NB 7/10/18 2030

- Dip Site
- Drop Point
- Gate
- Helispot
- Lookout
- WX Mobile Weather Unit
- P Pump
- ▲ Safety Zone
- Sling Site
- Spot Fire
- W Water Source
- ⚠ Value at Risk
- ⚡ Vertical Mine Shaft
- ) Division Break
- Structures
- ▬ Uncontrolled Fire Edge
- ▬ Completed Line
- ▬ Completed Dozer Line
- H - Completed Hand Line
- R - Road as Completed Line
- Access Road
- Range Water
- Range Fence
- Range Water Pipelines
- ▭ Parcels
- ▭ Non-FS
- ▭ Boreal Toad Habitat

106°7'W 106°6'W 106°5'W 106°4'W 106°3'W 106°2'W 106°1'W 106°0'W 105°59'W 105°58'W

MMA Hotspots 20180710

Div A

Div D

Div M

Div P

Div T

Div Z

Buffalo Peaks Wilderness

IRAWS-29

FS cabin

historic cabin

Jones Hill

Buffalo Springs

Chicken Dip

Llama Dip

Puzzle Dip

CORA Lookout

CORA

Buffalo Dip

Upper Toad Free Dip

Rd 22 HS DP-11

285

22

22

22

22

22

285

US-285

H-2

H-4

H-6

H-8

DP-56

DP-55

DP-50

H-10

DIV Z Med. Sling

DP-32

DP-21

DP-22

DP-23

DP-24

DP-30