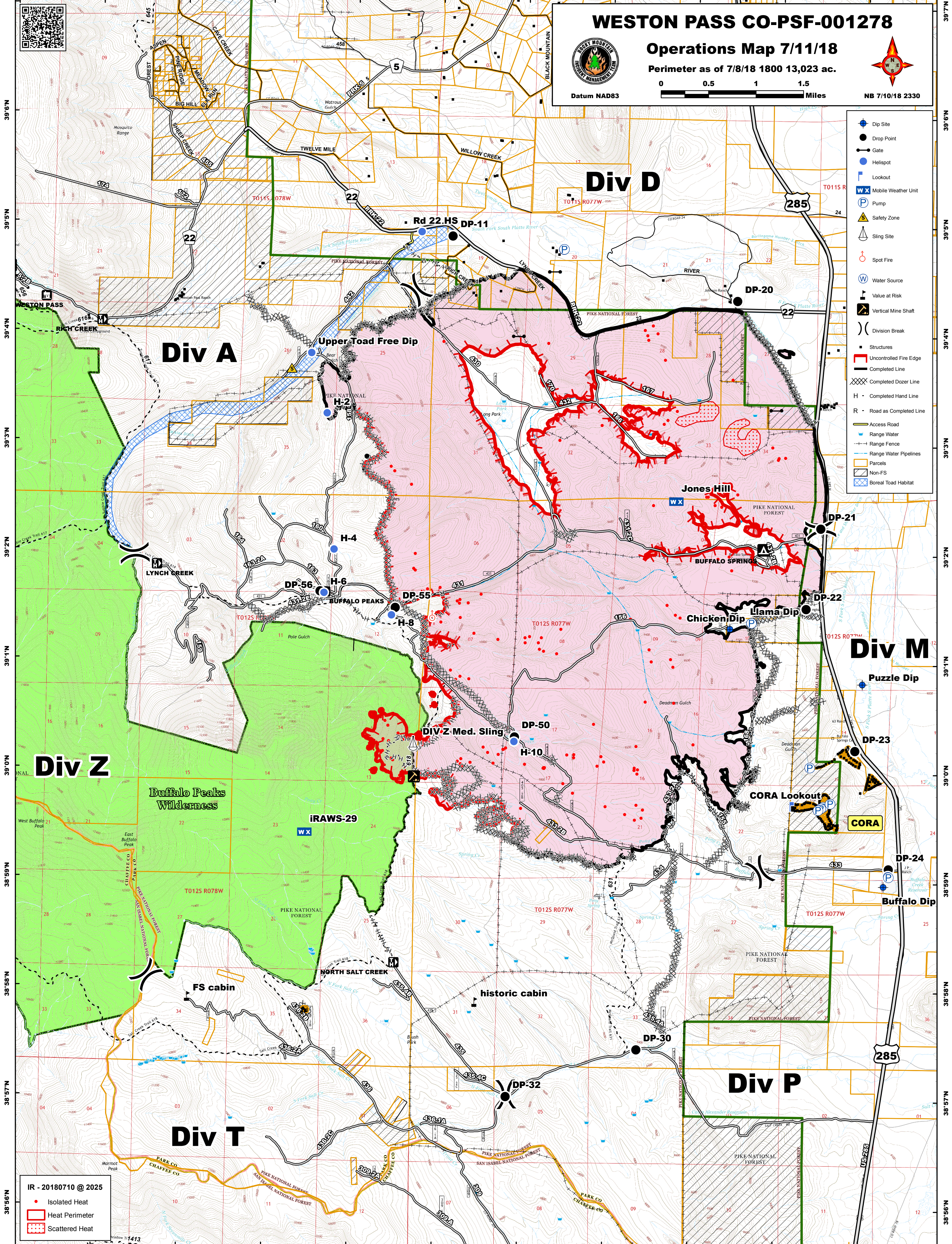


106°8'W 106°7'W 106°6'W 106°5'W 106°4'W 106°3'W 106°2'W 106°1'W 106°0'W 105°59'W 105°58'W



**WESTON PASS CO-PSF-001278**  
**Operations Map 7/11/18**  
 Perimeter as of 7/8/18 1800 13,023 ac.

Datum NAD83

0 0.5 1 1.5 Miles

NB 7/10/18 2330

- Dip Site
- Drop Point
- Gate
- Helispot
- Lookout
- Mobile Weather Unit
- Pump
- Safety Zone
- Sling Site
- Spot Fire
- Water Source
- Value at Risk
- Vertical Mine Shaft
- Division Break
- Structures
- Uncontrolled Fire Edge
- Completed Line
- Completed Dozer Line
- Completed Hand Line
- Road as Completed Line
- Access Road
- Range Water
- Range Fence
- Range Water Pipelines
- Parcels
- Non-FS
- Boreal Toad Habitat

IR - 20180710 @ 2025

- Isolated Heat
- Heat Perimeter
- Scattered Heat

106°7'W 106°6'W 106°5'W 106°4'W 106°3'W 106°2'W 106°1'W 106°0'W 105°59'W 105°58'W