

WESTON PASS CO-PSF-001278

Ownership Map 7/11/18

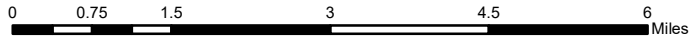
Perimeter as of 7/8/18
@ 1800 13,023 acres



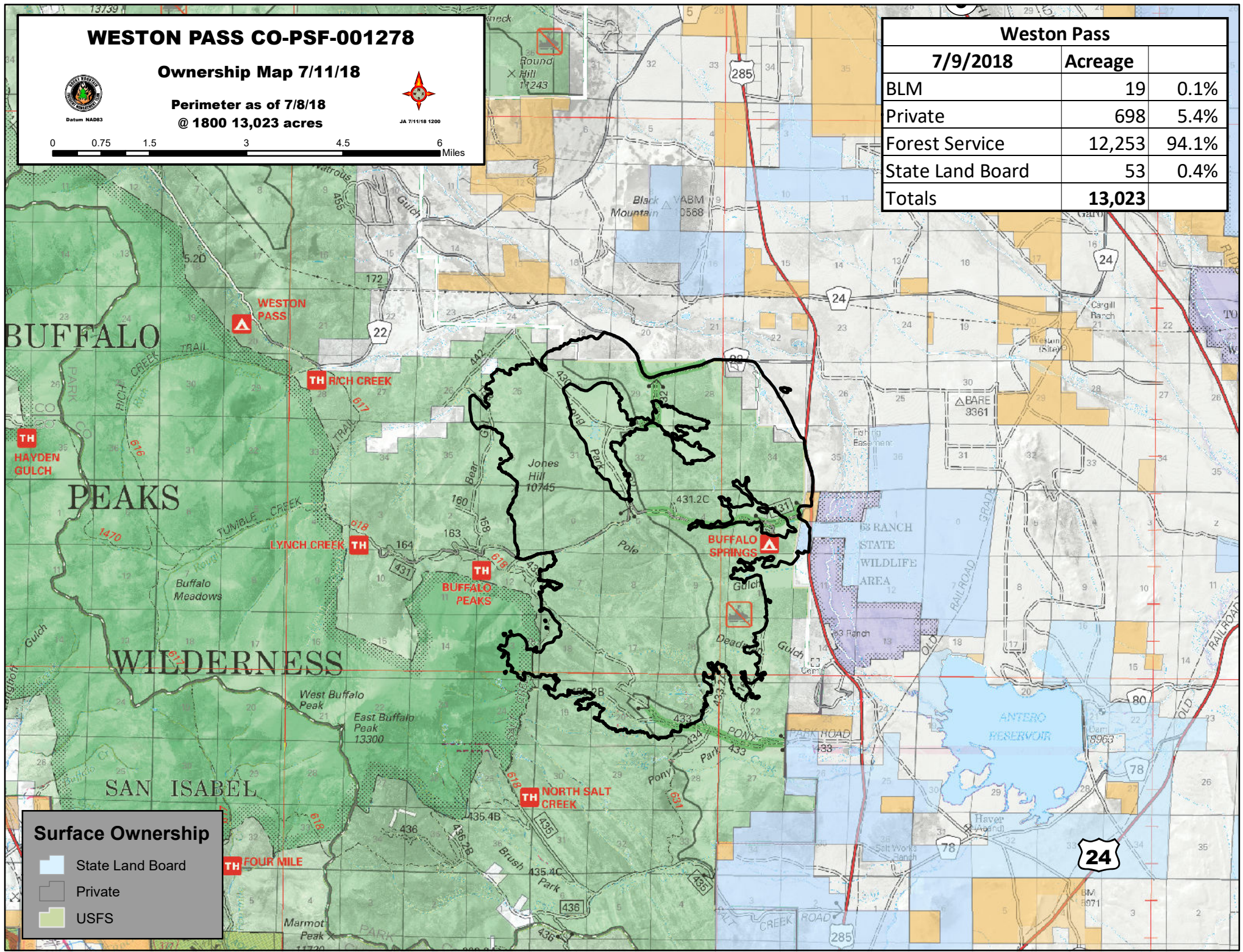
Datum NAD83



JA 7/11/18 1200



Weston Pass		
	7/9/2018	Acreage
BLM	19	0.1%
Private	698	5.4%
Forest Service	12,253	94.1%
State Land Board	53	0.4%
Totals	13,023	



Surface Ownership

- State Land Board
- Private
- USFS