

106°20'W 106°15'W 106°10'W 106°5'W 106°0'W 105°55'W 105°50'W 105°45'W 105°40'W 105°35'W

39°15'N 39°10'N 39°5'N 39°0'N 38°55'N 38°50'N

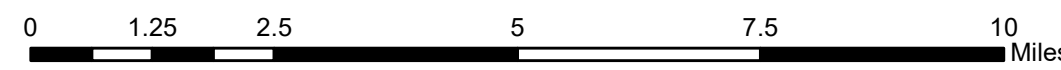
**WESTON PASS CO-PSF-001278**  
**Perimeter as of 7/8/18 1800 13,023 acres**  
**Pilot Map 7/12/18**



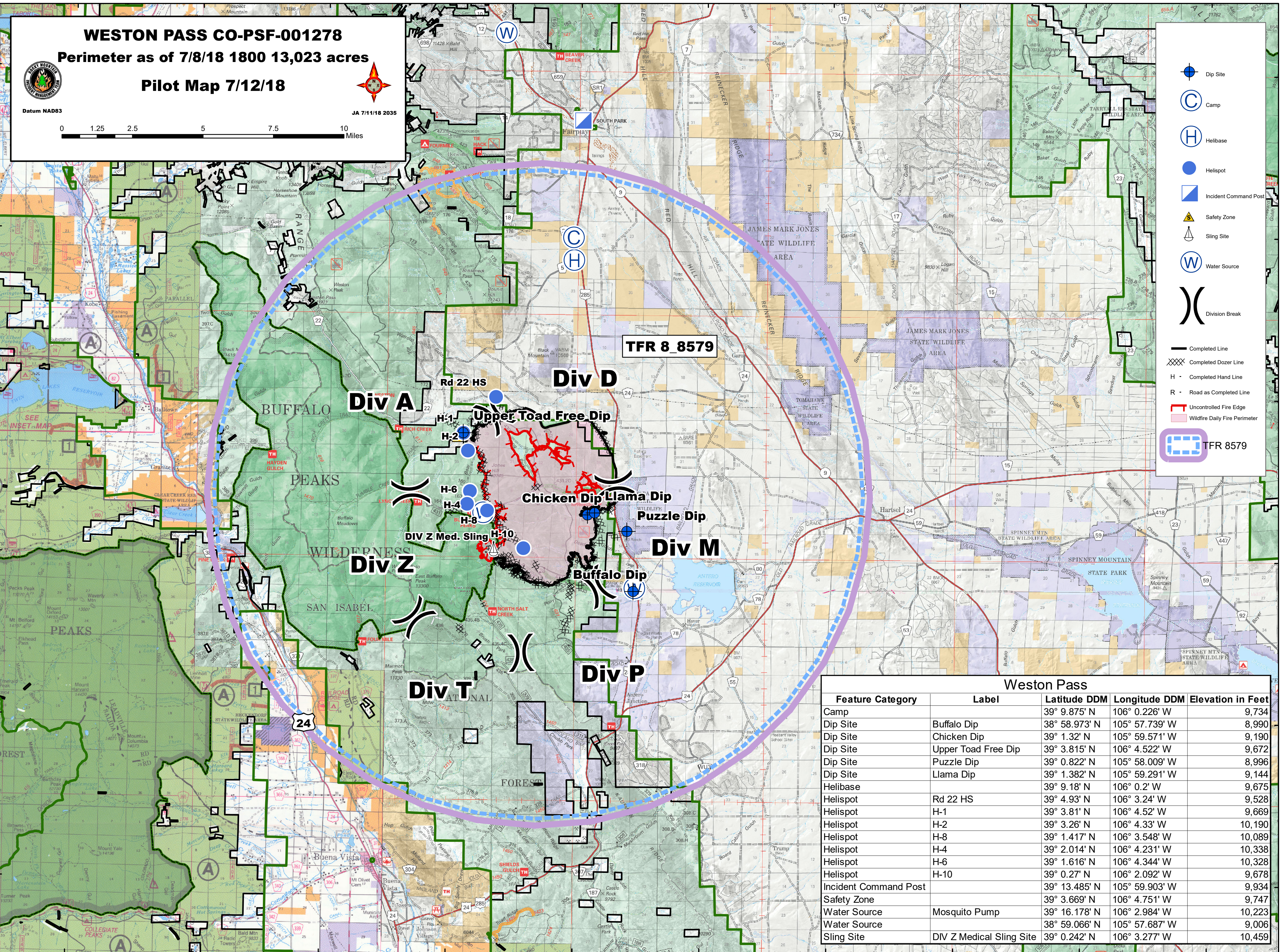
Datum NAD83



JA 7/11/18 2035



- Dip Site
- Camp
- Helibase
- Helispot
- Incident Command Post
- Safety Zone
- Sling Site
- Water Source
- Division Break
- Completed Line
- Completed Dozer Line
- H - Completed Hand Line
- R - Road as Completed Line
- Uncontrolled Fire Edge
- Wildfire Daily Fire Perimeter
- TFR 8579



Weston Pass				
Feature Category	Label	Latitude DDM	Longitude DDM	Elevation in Feet
Camp		39° 9.875' N	106° 0.226' W	9,734
Dip Site	Buffalo Dip	38° 58.973' N	105° 57.739' W	8,990
Dip Site	Chicken Dip	39° 1.32' N	105° 59.571' W	9,190
Dip Site	Upper Toad Free Dip	39° 3.815' N	106° 4.522' W	9,672
Dip Site	Puzzle Dip	39° 0.822' N	105° 58.009' W	8,996
Dip Site	Llama Dip	39° 1.382' N	105° 59.291' W	9,144
Helibase		39° 9.18' N	106° 0.2' W	9,675
Helispot	Rd 22 HS	39° 4.93' N	106° 3.24' W	9,528
Helispot	H-1	39° 3.81' N	106° 4.52' W	9,669
Helispot	H-2	39° 3.26' N	106° 4.33' W	10,190
Helispot	H-8	39° 1.417' N	106° 3.548' W	10,089
Helispot	H-4	39° 2.014' N	106° 4.231' W	10,338
Helispot	H-6	39° 1.616' N	106° 4.344' W	10,328
Helispot	H-10	39° 0.27' N	106° 2.092' W	9,678
Incident Command Post		39° 13.485' N	105° 59.903' W	9,934
Safety Zone		39° 3.669' N	106° 4.751' W	9,747
Water Source	Mosquito Pump	39° 16.178' N	106° 2.984' W	10,223
Water Source		38° 59.066' N	105° 57.687' W	9,006
Sling Site	DIV Z Medical Sling Site	39° 0.242' N	106° 3.277' W	10,459

106°20'W 106°15'W 106°10'W 106°5'W 106°0'W 105°55'W 105°50'W 105°45'W 105°40'W 105°35'W