

106°7'W 106°6'W 106°5'W 106°4'W 106°3'W 106°2'W 106°1'W 106°0'W 105°59'W 105°58'W



WESTON PASS CO-PSF-001278

Ops Imagery 7/13/18

Perimeter as of 7/8/18 1800 13,023 ac.

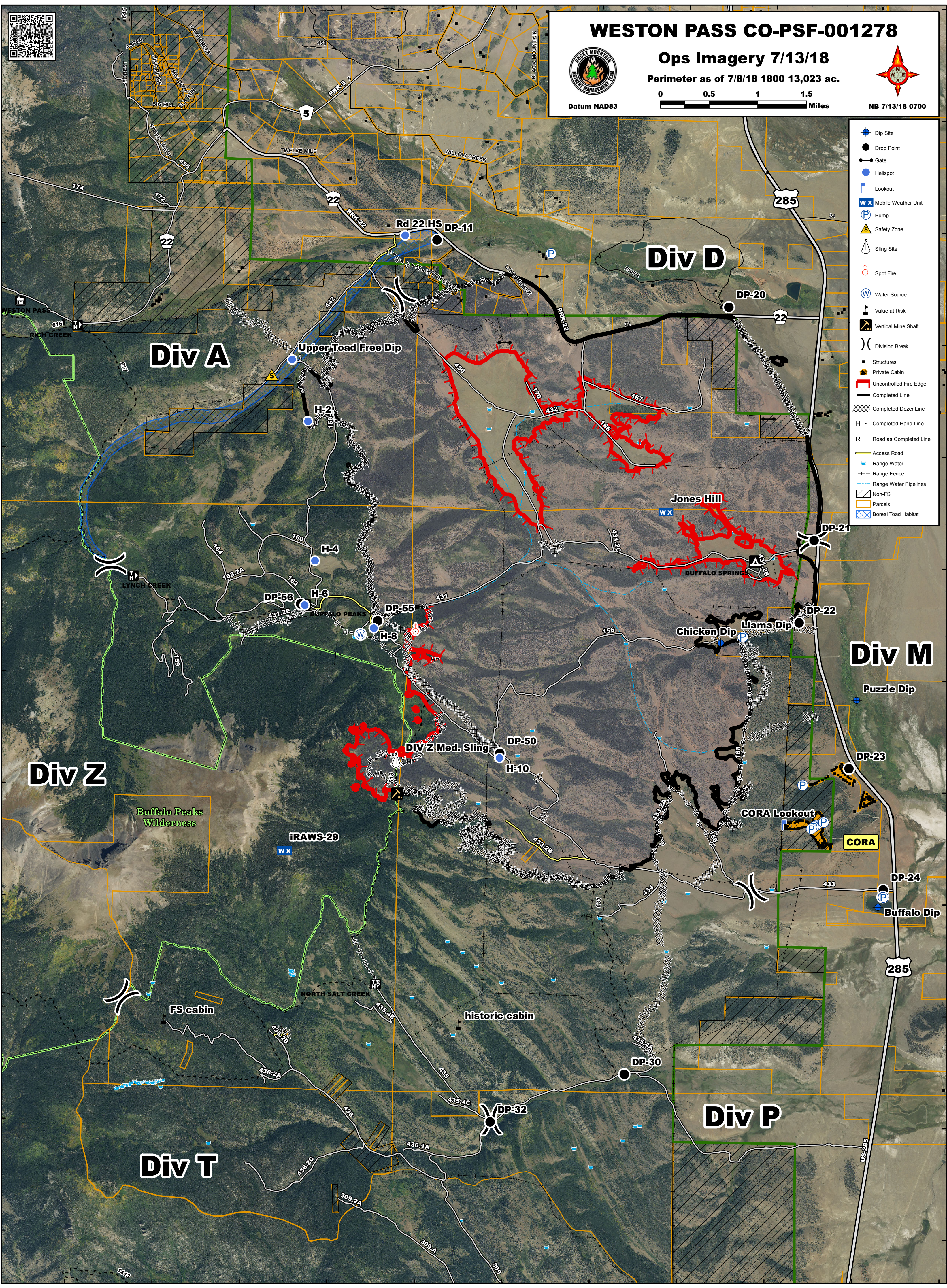
Datum NAD83 0 0.5 1 1.5 Miles



NB 7/13/18 0700

39°6'N 39°5'N 39°4'N 39°3'N 39°2'N 39°1'N 39°0'N 38°59'N 38°58'N 38°57'N 38°56'N

39°7'N 39°6'N 39°5'N 39°4'N 39°3'N 39°2'N 39°1'N 39°0'N 38°59'N 38°58'N 38°57'N 38°56'N



- Dip Site
- Drop Point
- Gate
- Hellspot
- Lookout
- Mobile Weather Unit
- Pump
- Safety Zone
- Sling Site
- Spot Fire
- Water Source
- Value at Risk
- Vertical Mine Shaft
- Division Break
- Structures
- Private Cabin
- Uncontrolled Fire Edge
- Completed Line
- Completed Dozer Line
- Completed Hand Line
- Road as Completed Line
- Access Road
- Range Water
- Range Fence
- Range Water Pipelines
- Non-FS
- Parcels
- Boreal Toad Habitat

106°7'W 106°6'W 106°5'W 106°4'W 106°3'W 106°2'W 106°1'W 106°0'W 105°59'W 105°58'W 105°57'W