

106°8'W 106°7'W 106°6'W 106°5'W 106°4'W 106°3'W 106°2'W 106°1'W 106°0'W 105°59'W 105°58'W

39°6'N 39°5'N 39°4'N 39°3'N 39°2'N 39°1'N 39°0'N 38°59'N 38°58'N 38°57'N 38°56'N

106°7'W 106°6'W 106°5'W 106°4'W 106°3'W 106°2'W 106°1'W 106°0'W 105°59'W 105°58'W

WESTON PASS CO-PSF-001278

Operations Map Final

Perimeter as of 7/8/18 1800 13,023 ac.

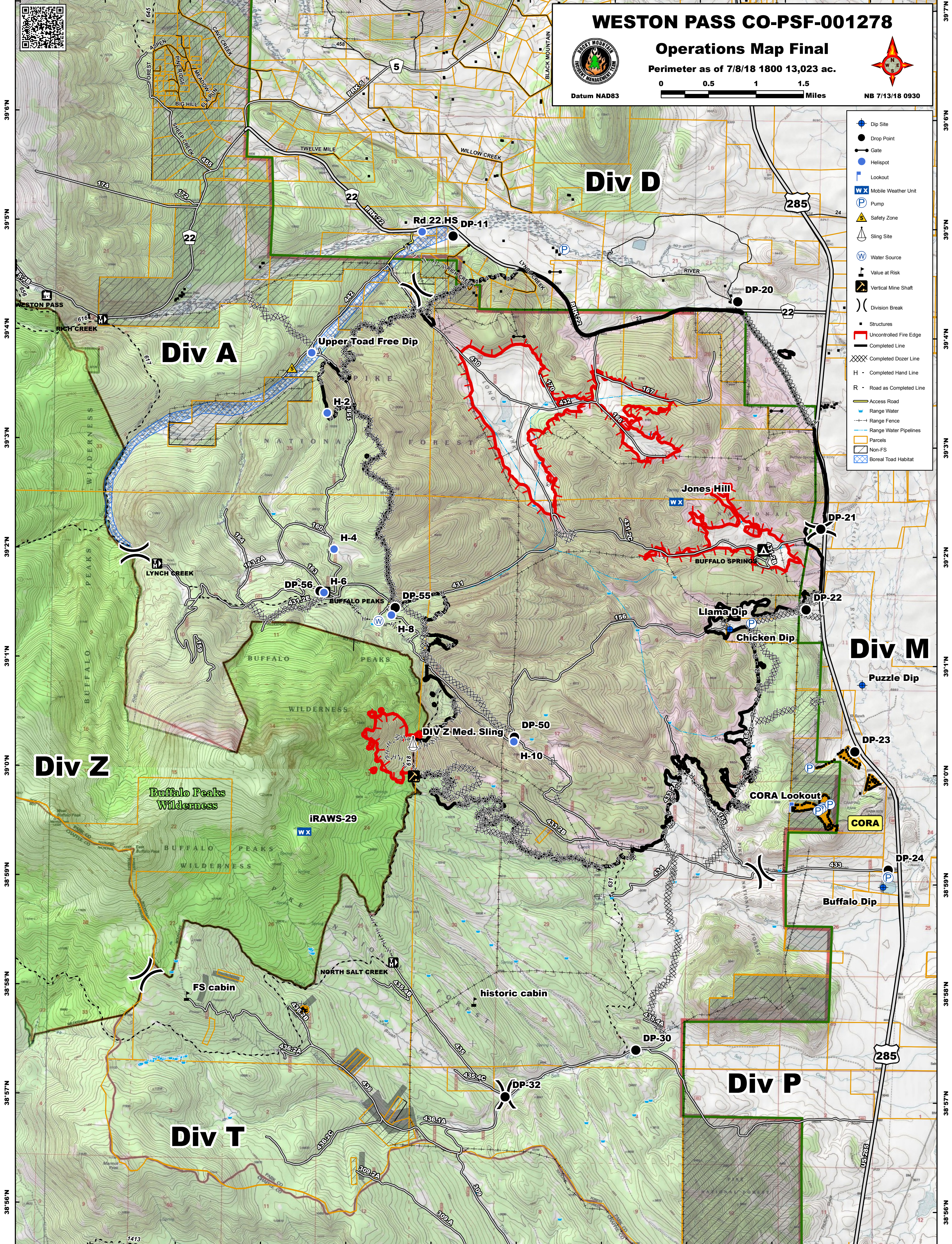


Datum NAD83



NB 7/13/18 0930

- Dip Site
- Drop Point
- Gate
- Helispot
- Lookout
- Mobile Weather Unit
- Pump
- Safety Zone
- Sling Site
- Water Source
- Value at Risk
- Vertical Mine Shaft
- Division Break
- Structures
- Uncontrolled Fire Edge
- Completed Line
- Completed Dozer Line
- Completed Hand Line
- Road as Completed Line
- Access Road
- Range Water
- Range Fence
- Range Water Pipelines
- Parcels
- Non-FS
- Boreal Toad Habitat



Div D

Div A

Div M

Div Z

Buffalo Peaks Wilderness

IRAWS-29

Div P

Div T

Rd 22 HS DP-11

Upper Toad Free Dip

Jones Hill

Buffalo Springs

Llama Dip

Chicken Dip

Puzzle Dip

DIV Z Med. Sling

CORA Lookout

CORA

Buffalo Dip

FS cabin

historic cabin

DP-30

DP-32

285

285

435.4C

435.4A

435.2C

309.2A

309.2A

309.2A

309.2A

309.2A

1413

1413