

# WESTON PASS CO-PSF-001278

## Ownership Map Final 7/13/18

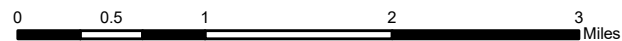
Perimeter as of 7/8/18  
@ 1800 13,023 acres



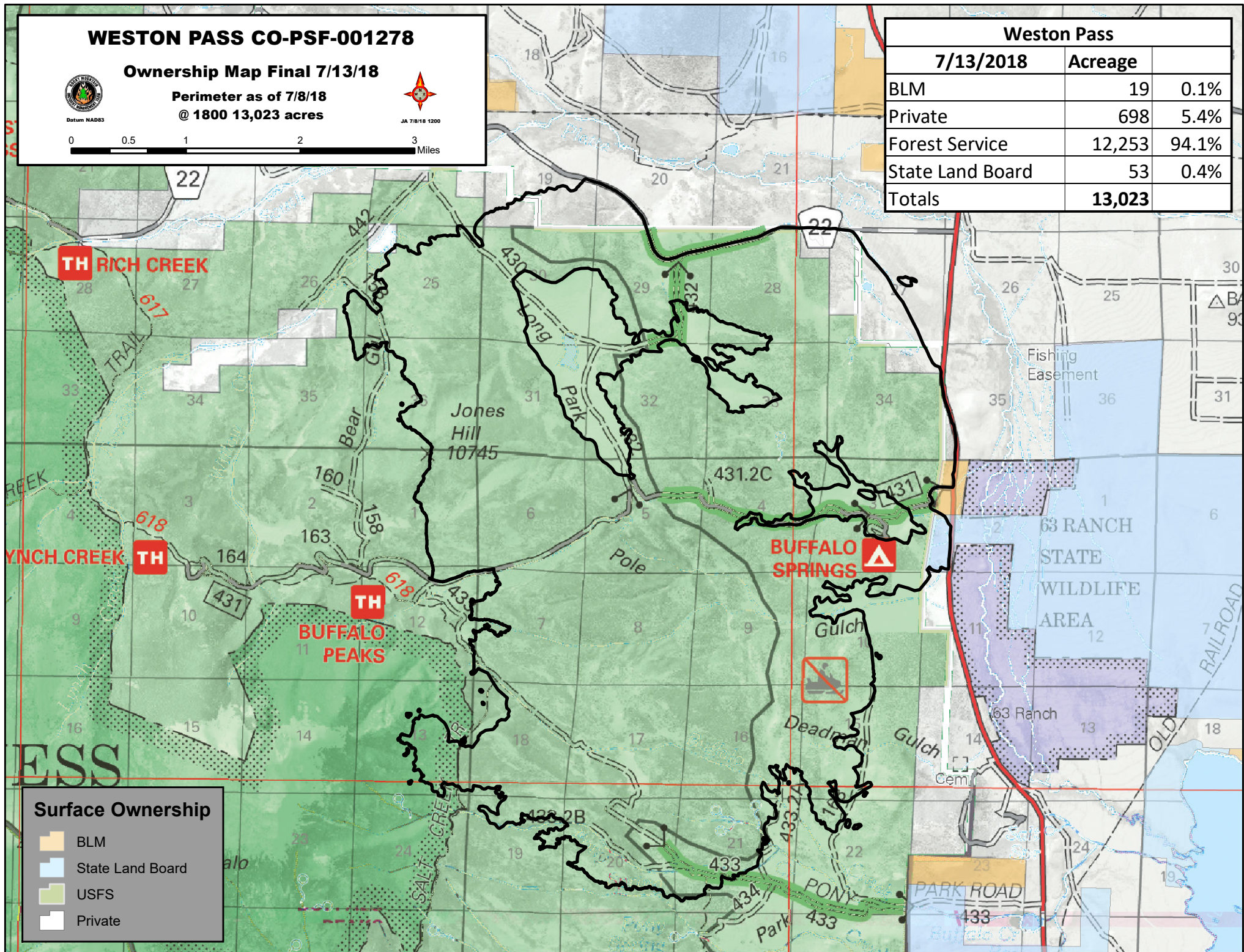
Datum NAD83



JA 7/8/18 1200



Weston Pass		
	7/13/2018	Acreage
BLM	19	0.1%
Private	698	5.4%
Forest Service	12,253	94.1%
State Land Board	53	0.4%
<b>Totals</b>	<b>13,023</b>	



### Surface Ownership

- BLM
- State Land Board
- USFS
- Private