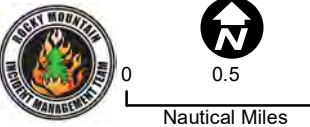
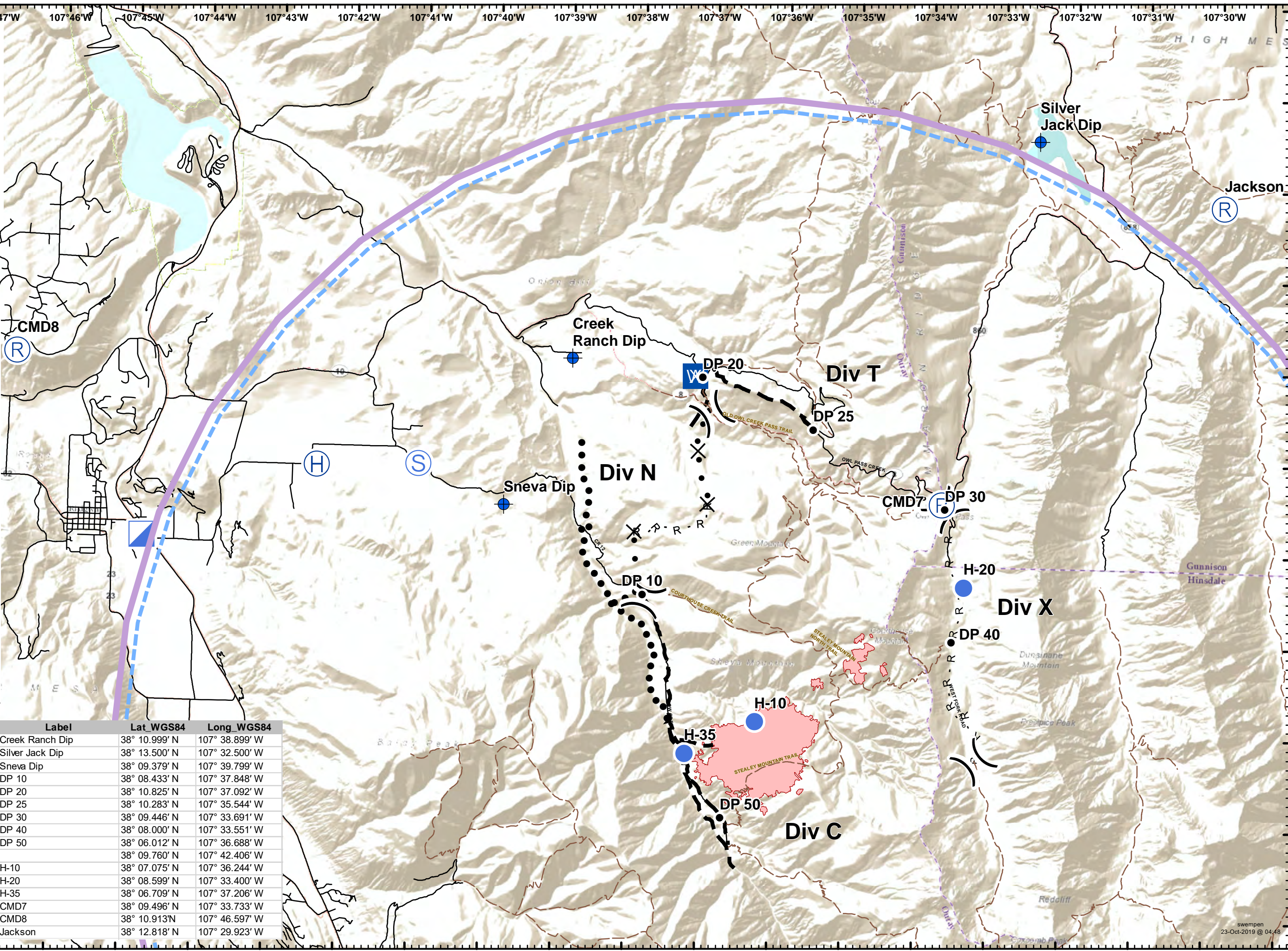


Pilot Map
Cow Creek
CO-GMF-000235
 9/23- Day

Appx 853 acres
 IR@ 10/21 - 2135 hrs



- Dip Site
- Drop Point
- Helispot
- WX Mobile Weather Unit
- R Repeater
- S Staging Area
-) (Division Break
- R - R - Road as Completed Line
- X - X - Proposed Dozer Line
- Planned Fire Line
- ● ● ● Planned Secondary Line
- Trail
- County Road
- TFR
- Wildfire Daily Fire Perimeter



Type	Label	Lat_WGS84	Long_WGS84
Dip Site	Creek Ranch Dip	38° 10.999' N	107° 38.899' W
Dip Site	Silver Jack Dip	38° 13.500' N	107° 32.500' W
Dip Site	Sneva Dip	38° 09.379' N	107° 39.799' W
Drop Point	DP 10	38° 08.433' N	107° 37.848' W
Drop Point	DP 20	38° 10.825' N	107° 37.092' W
Drop Point	DP 25	38° 10.283' N	107° 35.544' W
Drop Point	DP 30	38° 09.446' N	107° 33.691' W
Drop Point	DP 40	38° 08.000' N	107° 33.551' W
Drop Point	DP 50	38° 06.012' N	107° 36.688' W
Helibase		38° 09.760' N	107° 42.406' W
Helispot (Approved for Type 2)	H-10	38° 07.075' N	107° 36.244' W
Helispot (Approved for Type 2+3)	H-20	38° 08.599' N	107° 33.400' W
Helispot (Approved for Type 2+3)	H-35	38° 06.709' N	107° 37.206' W
Repeater	CMD7	38° 09.496' N	107° 33.733' W
Repeater	CMD8	38° 10.913' N	107° 46.597' W
Repeater	Jackson	38° 12.818' N	107° 29.923' W