

106°10'W 106°0'30"W 106°0'0"W 105°59'30"W 105°59'0"W 105°58'30"W 105°58'0"W

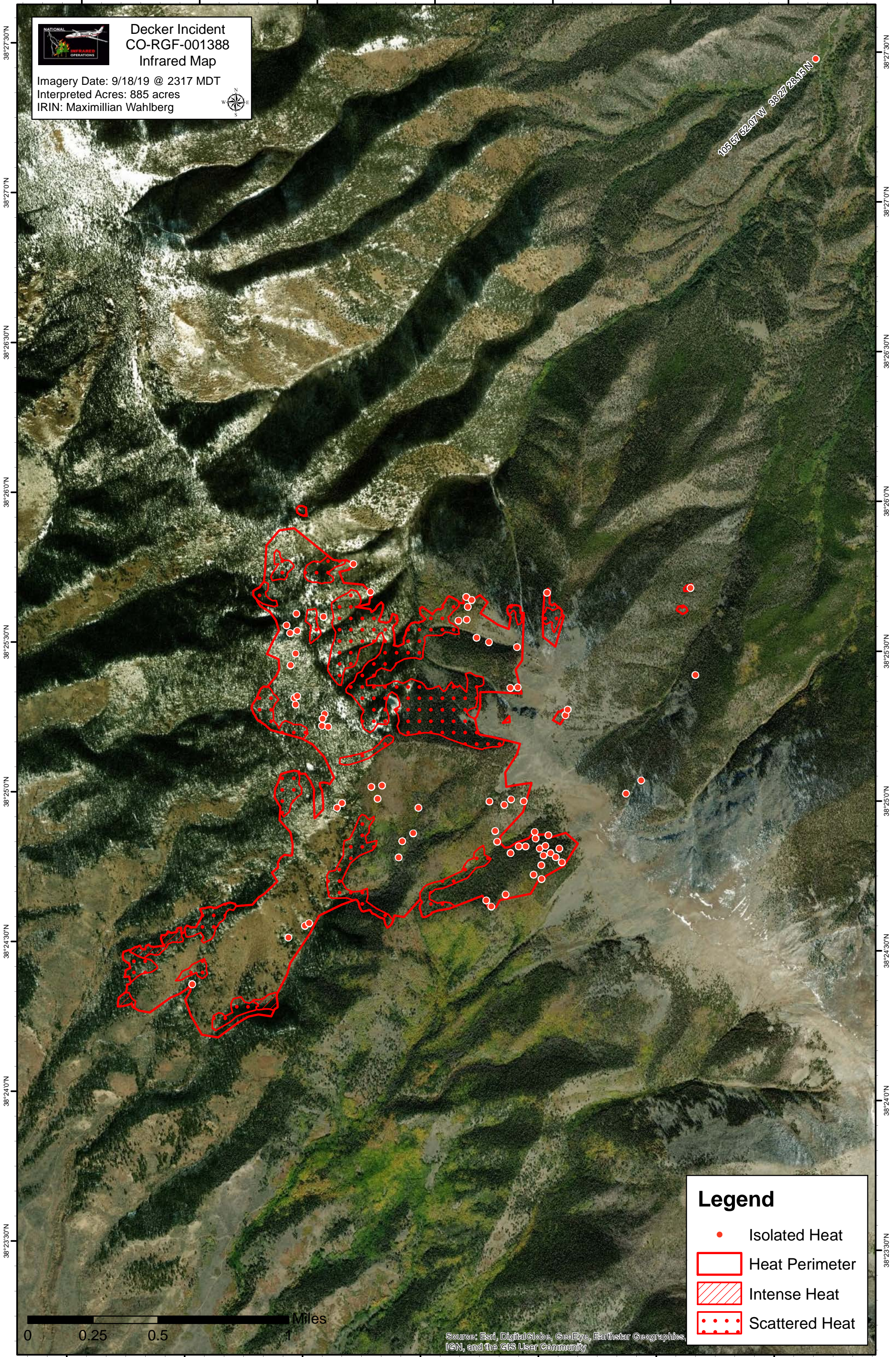


Decker Incident CO-RGF-001388 Infrared Map

Imagery Date: 9/18/19 @ 2317 MDT
Interpreted Acres: 885 acres
IRIN: Maximillian Wahlberg

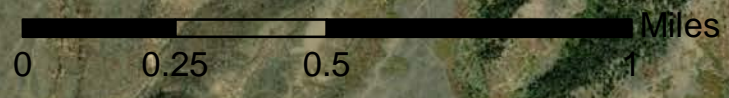


105°57'52.07"W 38°27'28.15"N



Legend

- Isolated Heat
- Heat Perimeter
- Intense Heat
- Scattered Heat



Source: Esri, DigitalGlobe, GeoEye, Earthstar Geographics, IGN, and the GIS User Community

106°10'W 106°0'30"W 106°0'0"W 105°59'30"W 105°59'0"W 105°58'30"W 105°58'0"W