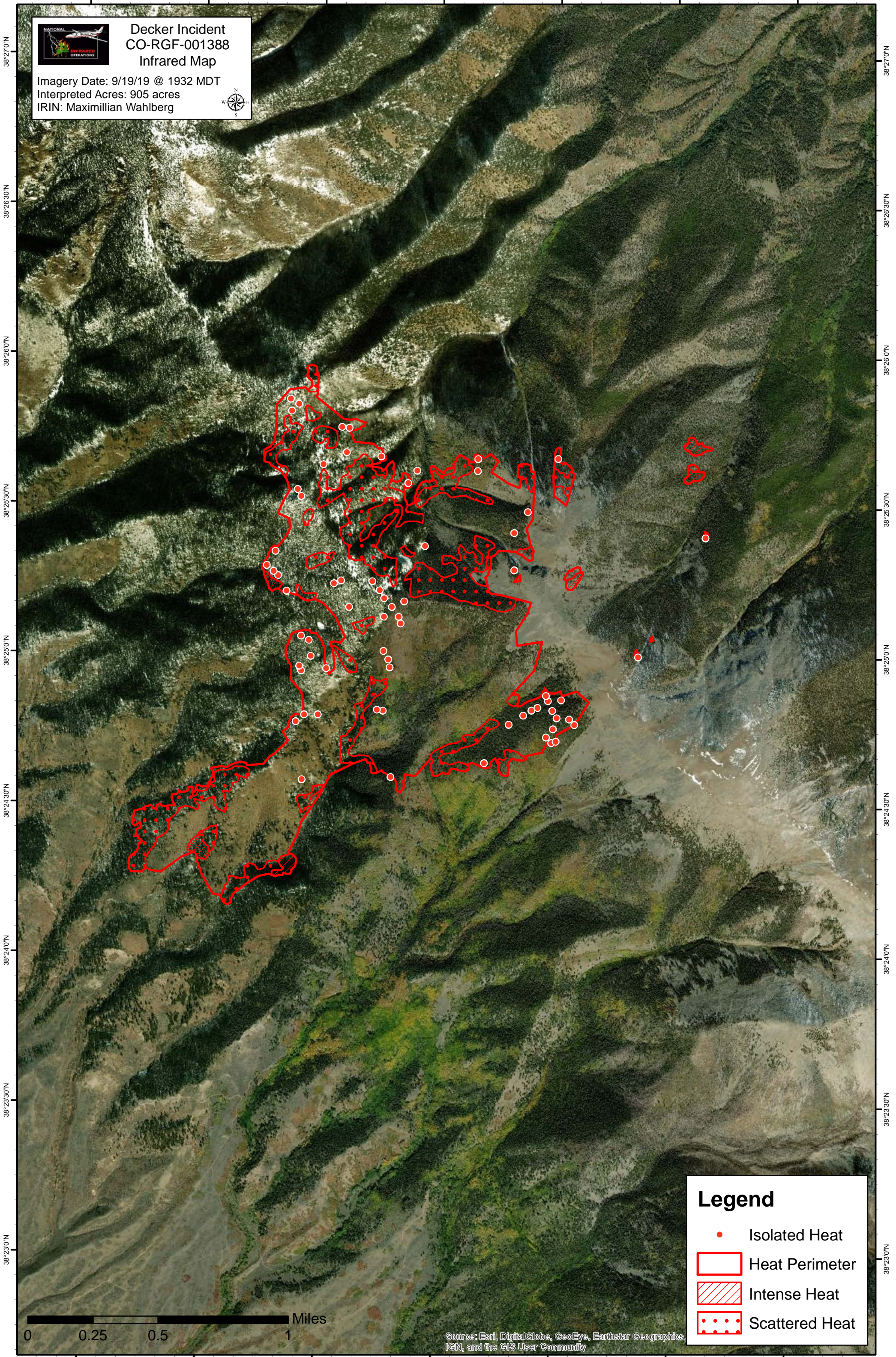


106°1'0"W 106°0'30"W 106°0'0"W 105°59'30"W 105°59'0"W 105°58'30"W 105°58'0"W



Decker Incident CO-RGF-001388 Infrared Map

Imagery Date: 9/19/19 @ 1932 MDT
Interpreted Acres: 905 acres
IRIN: Maximillian Wahlberg



Legend

- Isolated Heat
- Heat Perimeter
- Intense Heat
- Scattered Heat



Source: Esri, DigitalGlobe, GeoEye, Earthstar Geographics, IGN, and the GIS User Community

106°1'0"W 106°0'30"W 106°0'0"W 105°59'30"W 105°59'0"W 105°58'30"W 105°58'0"W

38°27'0"N
38°26'30"N
38°26'0"N
38°25'30"N
38°25'0"N
38°24'30"N
38°24'0"N
38°23'30"N
38°23'0"N

38°27'0"N
38°26'30"N
38°26'0"N
38°25'30"N
38°25'0"N
38°24'30"N
38°24'0"N
38°23'30"N
38°23'0"N