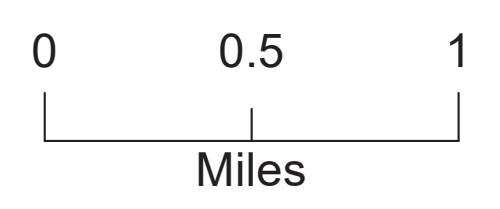


Operations
Decker
CO-RGF-1388
2019SEPT23 24HR

Appx 1195 ac at
 2019SEPT22 1700HR



HELISPOT	LATITUDE	LONGITUDE
H1	38 22.4235' N	106 01.7911' W
H2	38 23.6510' N	106 01.4406' W
H3 (TYPE 3 only)	38 26.0587' N	105 56.1269' W
H4	38 26.1001' N	105 56.5379' W
H5 (Type 3 only)	38 25.8810' N	106 00.1332' W

- Fire Perimeter
- Hot Spots
- Aerial Hazard
- Camp
- Drop Point
- Unimproved Landing Area
- Helispot
- Incident Command Post
- Lookout
- Mobile Weather Unit
- Repeater
- Resource Location
- Division Break
- Transmission Line Corridors
- Highways
- BLM or USFS Roads
- Trails
- Completed Line
- Completed Hand Line
- Road as Completed Line
- Wilderness
- Wildfires within 10 years

Ownership

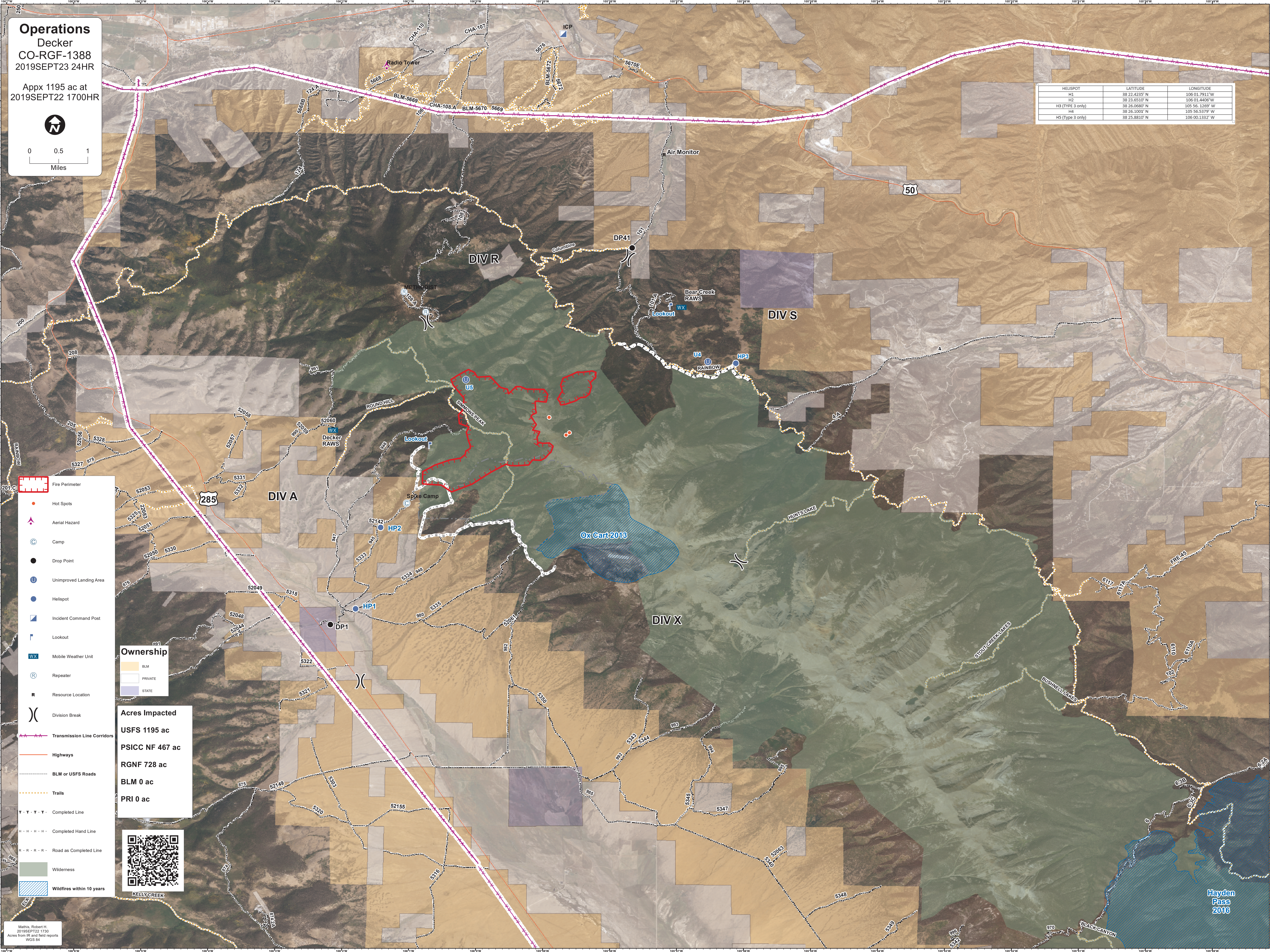
- BLM
- PRIVATE
- STATE

Acres Impacted

- USFS 1195 ac**
- PSICC NF 467 ac**
- RGNF 728 ac**
- BLM 0 ac**
- PRI 0 ac**



KELLYCREEK



Hayden
 Pass
 2016