

106°6'W 106°4'W 106°2'W 106°0'W 105°58'W 105°56'W 105°54'W 105°52'W

# DECKER CO-RGF-1388

Air Ops Map 10/4/19

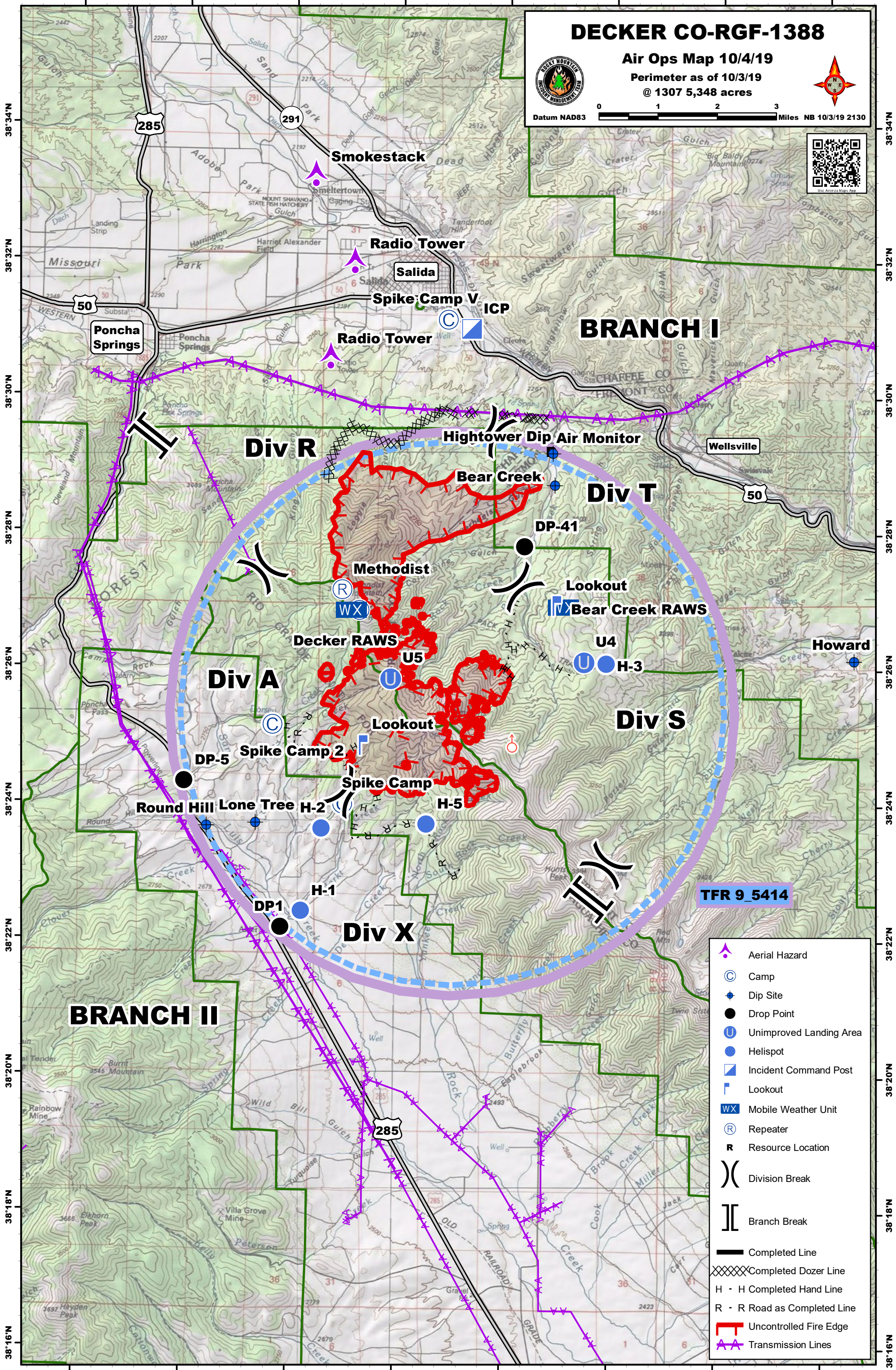
Perimeter as of 10/3/19

@ 1307 5,348 acres



Datum NAD83

0 1 2 3 Miles NB 10/3/19 2130



## BRANCH I

## BRANCH II

TFR 9\_5414

- Aerial Hazard
- Camp
- Dip Site
- Drop Point
- Unimproved Landing Area
- Helispot
- Incident Command Post
- Lookout
- Mobile Weather Unit
- Repeater
- Resource Location
- Division Break
- Branch Break
- Completed Line
- Completed Dozer Line
- H - H Completed Hand Line
- R - R Road as Completed Line
- Uncontrolled Fire Edge
- Transmission Lines

<b>Label</b>	<b>Type</b>	<b>Latitude (ddm)</b>	<b>Longitude (ddm)</b>
Air Monitor	Air Monitor	38° 29.196' N	105° 57.183' W
Bear Creek	Dip Site	38° 28.708' N	105° 57.104' W
Bear Creek RAWS	RAWS	38° 26.913' N	105° 56.930' W
Decker RAWS	RAWS	38° 26.847' N	106° 0.904' W
DP-1	Drop Point	38° 22.175' N	106° 2.166' W
DP-41	Drop Point	38° 27.801' N	105° 57.661' W
DP-5	Drop Point	38° 24.318' N	106° 3.993' W
H-1	Helispot	38° 22.412' N	106° 1.791' W
H-2	Helispot	38° 23.628' N	106° 1.418' W
H-3	Helispot	38° 26.081' N	105° 56.115' W
H-5	Helispot	38° 23.703' N	105° 59.455' W
Hightower Dip	Dip Site	38° 29.175' N	105° 57.147' W
Howard	Dip Site	38° 26.147' N	105° 51.473' W
ICP	ICP	38° 30.997' N	105° 58.690' W
Lone Tree	Dip Site	38° 23.703' N	106° 2.649' W
Lookout	Lookout	38° 26.929' N	105° 57.097' W
Lookout	Lookout	38° 24.854' N	106° 0.693' W
O'Haver Res.	Dip Site (off map)	38° 25.424' N	106° 8.764' W
Repeater	Repeater	38° 26.846' N	106° 0.742' W
Methodist	Repeater	38° 27.147' N	106° 1.067' W
Radio Tower	Aerial Hazard	38° 31.905' N	106° 0.893' W
Radio Tower	Aerial Hazard	38° 30.503' N	106° 1.327' W
Round Hill	Dip Site	38° 23.655' N	106° 3.565' W
Smokestack	Aerial Hazard	38° 33.180' N	106° 1.636' W
Spike Camp	Camp	38° 23.988' N	106° 1.027' W
Spike Camp 2	Camp	38° 25.153' N	106° 2.345' W
Spike Camp V	Camp	38° 31.130' N	105° 59.130' W
Tower	Aerial Hazard	38° 29.713' N	106° 19.008' W
U4	Unimproved Landing Area	38° 26.101' N	105° 56.530' W
U5	Unimproved Landing Area	38° 25.834' N	106° 0.144' W