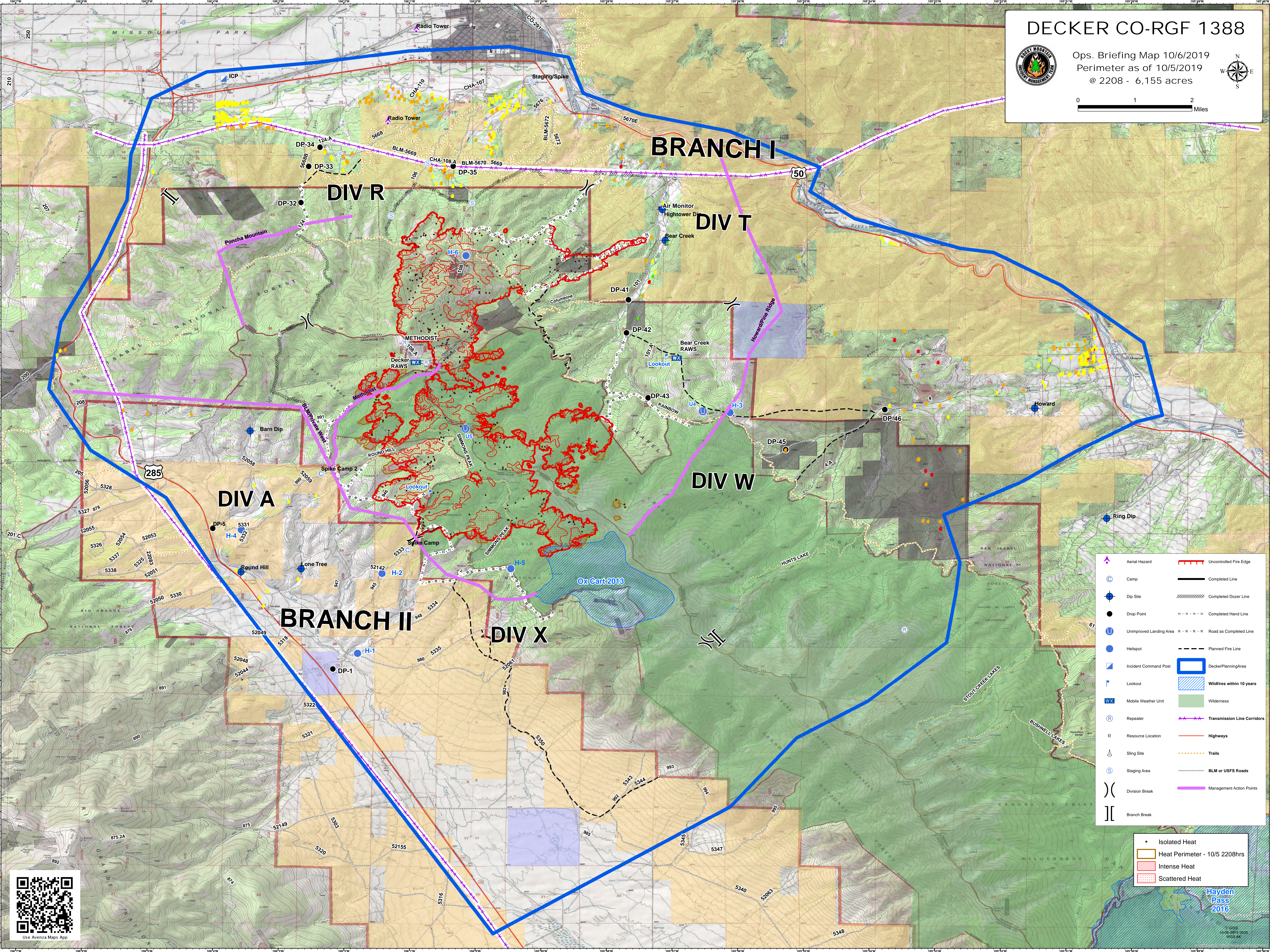
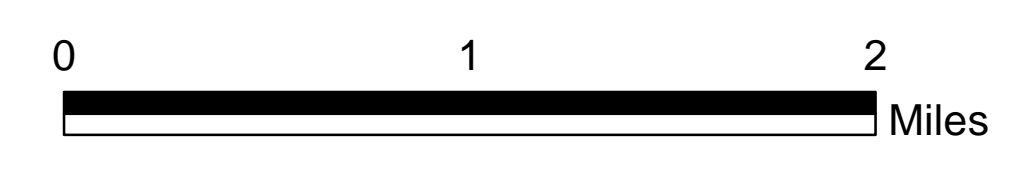
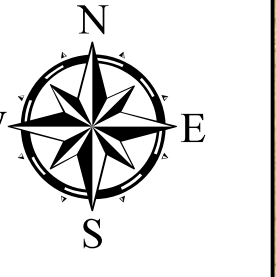


DECKER CO-RGF 1388



Ops. Briefing Map 10/6/2019
Perimeter as of 10/5/2019
@ 2208 - 6,155 acres



| | | | |
|--|-------------------------|--|-----------------------------|
| | Aerial Hazard | | Uncontrolled Fire Edge |
| | Camp | | Completed Line |
| | Dip Site | | Completed Dozer Line |
| | Drop Point | | Completed Hand Line |
| | Unimproved Landing Area | | Road as Completed Line |
| | Helispot | | Planned Fire Line |
| | Incident Command Post | | DeckerPlanningArea |
| | Lookout | | Wildfires within 10 years |
| | Mobile Weather Unit | | Wilderness |
| | Repeater | | Transmission Line Corridors |
| | Resource Location | | Highways |
| | Sling Site | | Trails |
| | Staging Area | | BLM or USFS Roads |
| | Division Break | | Management Action Points |
| | Branch Break | | |

| | |
|--|-------------------------------|
| | Isolated Heat |
| | Heat Perimeter - 10/5 2208hrs |
| | Intense Heat |
| | Scattered Heat |



Hayden Pass 2016

GIS 10-6-2019 10:00 WGS 84