

106°12'W 106°10'W 106°8'W 106°6'W 106°4'W 106°2'W 106°0'W 105°58'W 105°56'W 105°54'W 105°52'W 105°50'W 105°48'W 105°46'W

- Aerial Hazard
- Camp
- Dip Site
- Drop Point
- Unimproved Landing Area
- Helispot
- Incident Command Post
- Lookout
- Mobile Weather Unit
- Repeater
- Resource Location
- Division Break
- Branch Break
- Completed Line
- Completed Dozer Line
- H - H Completed Hand Line
- R - R Road as Completed Line
- Uncontrolled Fire Edge
- Transmission Lines

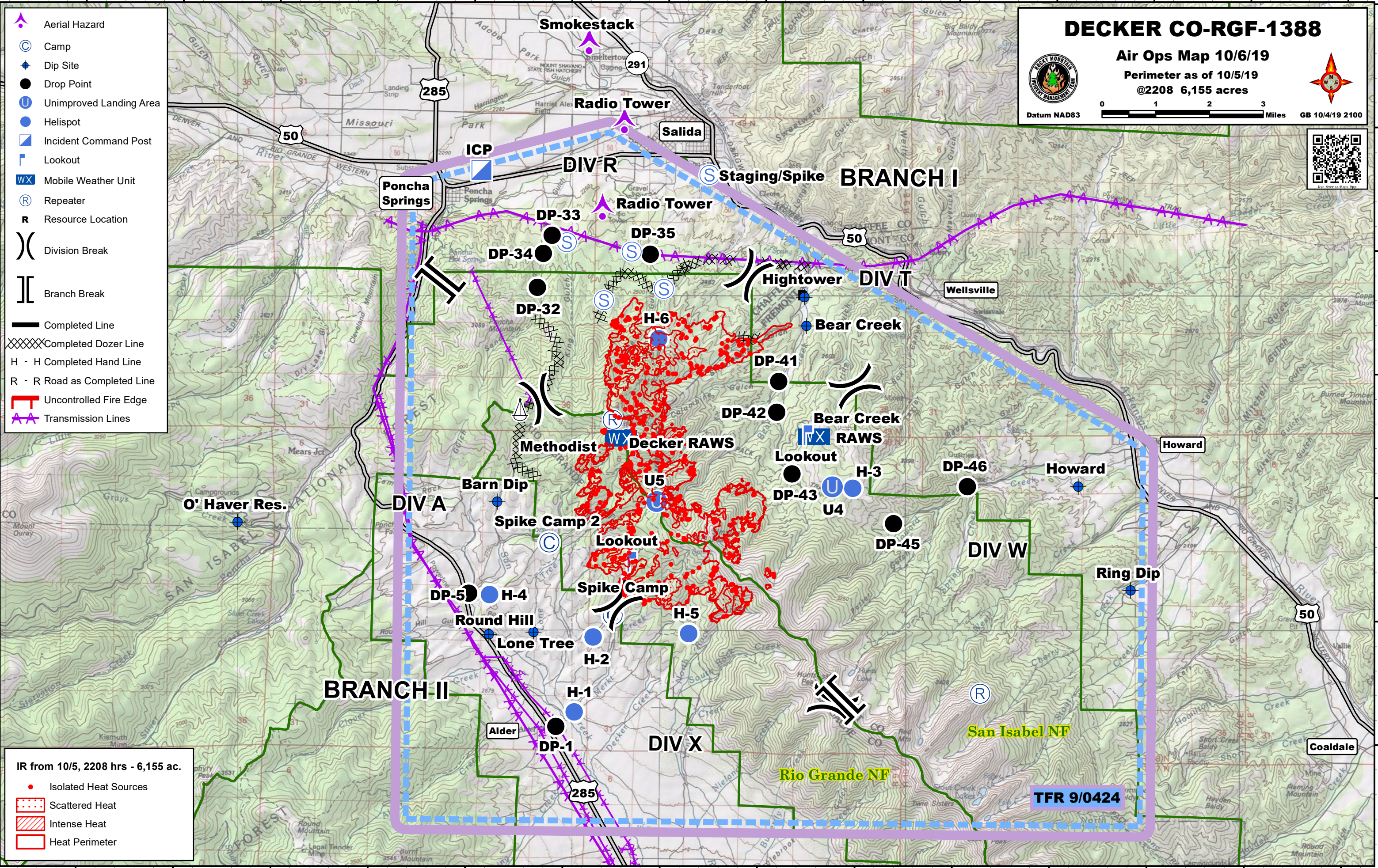
DECKER CO-RGF-1388

Air Ops Map 10/6/19
Perimeter as of 10/5/19
@2208 6,155 acres

Datum NAD83 Miles GB 10/4/19 2100



38°32'N
38°30'N
38°28'N
38°26'N
38°24'N
38°22'N
38°20'N



IR from 10/5, 2208 hrs - 6,155 ac.

- Isolated Heat Sources
- Scattered Heat
- Intense Heat
- Heat Perimeter

TFR 9/0424

106°12'W 106°10'W 106°8'W 106°6'W 106°4'W 106°2'W 106°0'W 105°58'W 105°56'W 105°54'W 105°52'W 105°50'W 105°48'W 105°46'W

Label	Type	Latitude (ddm)	Longitude (ddm)
Radio Tower	Aerial Hazard	38° 31.905' N	106° 0.893' W
Radio Tower	Aerial Hazard	38° 30.503' N	106° 1.327' W
Smokestack	Aerial Hazard	38° 33.180' N	106° 1.636' W
Tower	Aerial Hazard	38° 29.713' N	106° 19.008' W
Spike Camp	Camp	38° 23.988' N	106° 1.027' W
Spike Camp 2	Camp	38° 25.153' N	106° 2.345' W
Barn Dip	Dip Site	38° 25.805' N	106° 3.425' W
Bear Creek	Dip Site	38° 28.708' N	105° 57.104' W
Hightower	Dip Site	38° 29.175' N	105° 57.147' W
Howard	Dip Site	38° 26.147' N	105° 51.473' W
Lone Tree	Dip Site	38° 23.703' N	106° 2.649' W
O' Haver Res.	Dip Site	38° 25.424' N	106° 8.763' W
Ring Dip	Dip Site	38° 24.470' N	105° 50.376' W
Round Hill	Dip Site	38° 23.655' N	106° 3.565' W
DP-1	Drop Point	38° 22.175' N	106° 2.166' W
DP-32	Drop Point	38° 29.282' N	106° 2.650' W
DP-33	Drop Point	38° 29.834' N	106° 2.532' W
DP-34	Drop Point	38° 30.128' N	106° 2.360' W
DP-35	Drop Point	38° 29.838' N	106° 0.332' W
DP-41	Drop Point	38° 27.801' N	105° 57.661' W
DP-42	Drop Point	38° 27.299' N	105° 57.692' W
DP-43	Drop Point	38° 26.306' N	105° 57.364' W
DP-45	Drop Point	38° 25.517' N	105° 55.267' W
DP-46	Drop Point	38° 26.127' N	105° 53.757' W
DP-5	Drop Point	38° 24.318' N	106° 3.993' W
H-1	Helispot	38° 22.412' N	106° 1.791' W
H-2	Helispot	38° 23.628' N	106° 1.418' W
H-3	Helispot	38° 26.081' N	105° 56.115' W
H-4	Helispot	38° 24.297' N	106° 3.560' W
H-5	Helispot	38° 23.703' N	105° 59.455' W
H-6	Helispot	38° 28.473' N	106° 0.138' W
ICP	Incident Command Post	38° 31.171' N	106° 3.829' W
Lookout	Lookout	38° 26.929' N	105° 57.097' W
Lookout	Lookout	38° 24.854' N	106° 0.693' W
Bear Creek RAWS	Mobile Weather Unit	38° 26.913' N	105° 56.930' W
Decker RAWS	Mobile Weather Unit	38° 26.847' N	106° 0.904' W
Methodist	Repeater	38° 27.147' N	106° 1.067' W
	Repeater	38° 26.846' N	106° 0.742' W
	Repeater	38° 22.774' N	105° 53.454' W
Air Monitor	Resource Location	38° 29.196' N	105° 57.183' W
	Sling Site	38° 27.295' N	106° 2.983' W
Staging/Spike	Staging Area	38° 31.130' N	105° 59.130' W
	Staging Area	38° 30.015' N	106° 2.050' W
	Staging Area	38° 29.083' N	106° 1.277' W
	Staging Area	38° 29.876' N	106° 0.718' W
	Staging Area	38° 29.276' N	106° 0.042' W
U4	Unimproved Landing Area	38° 26.101' N	105° 56.530' W
U5	Unimproved Landing Area	38° 25.834' N	106° 0.144' W