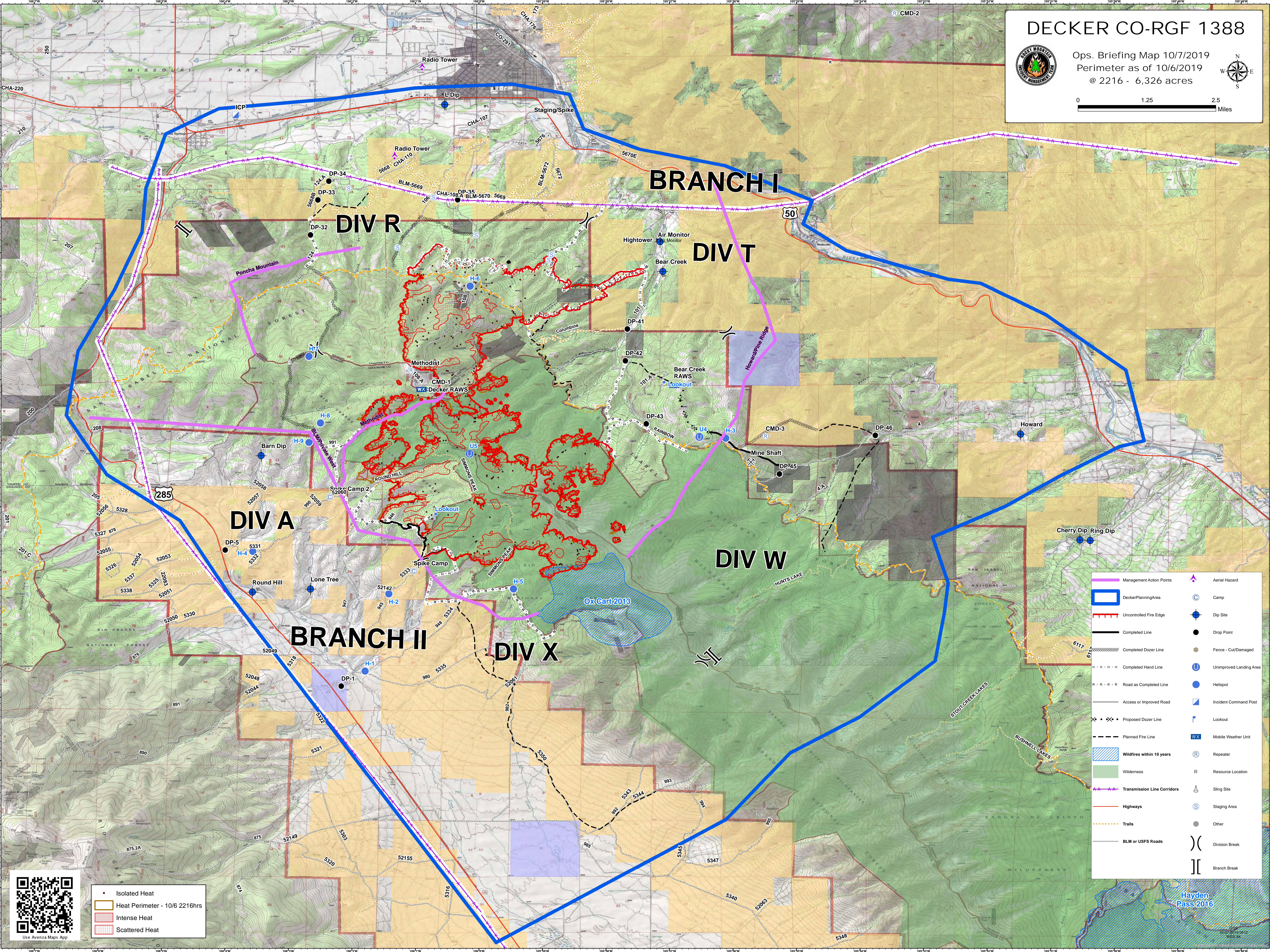
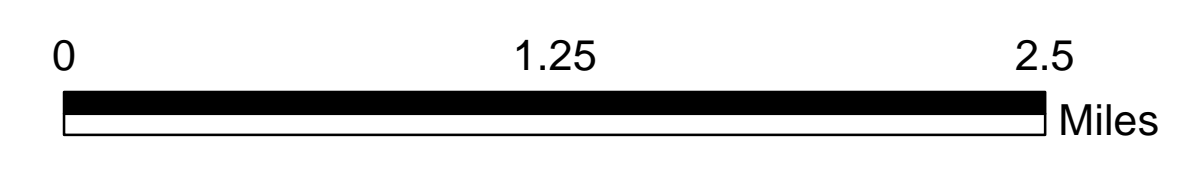
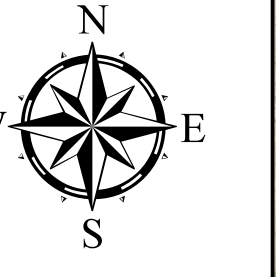


# DECKER CO-RGF 1388



Ops. Briefing Map 10/7/2019  
Perimeter as of 10/6/2019  
@ 2216 - 6,326 acres



**BRANCH I**

**DIV R**

**DIV T**

**DIV A**

**DIV W**

**BRANCH II**

**DIV X**

	Management Action Points		Aerial Hazard
	DeckerPlanningArea		Camp
	Uncontrolled Fire Edge		Dip Site
	Completed Line		Drop Point
	Completed Dozer Line		Fence - Cut/Damaged
	Completed Hand Line		Unimproved Landing Area
	Road as Completed Line		Helispot
	Access or Improved Road		Incident Command Post
	Proposed Dozer Line		Lookout
	Planned Fire Line		Mobile Weather Unit
	Wildfires within 10 years		Repeater
	Wilderness		Resource Location
	Transmission Line Corridors		Sling Site
	Highways		Staging Area
	Trails		Other
	BLM or USFS Roads		Division Break
			Branch Break

- Isolated Heat
- Heat Perimeter - 10/6 2216hrs
- Intense Heat
- Scattered Heat

Use Avenza Maps App

Hayden Pass 2016

10/7/2019 09:12  
WGS 84