

106°12'W 106°10'W 106°8'W 106°6'W 106°4'W 106°2'W 106°0'W 105°58'W 105°56'W 105°54'W 105°52'W 105°50'W 105°48'W 105°46'W

38°32'N 38°30'N 38°28'N 38°26'N 38°24'N 38°22'N 38°20'N

- Aerial Hazard
- Camp
- Dip Site
- Drop Point
- Unimproved Landing Area
- Helispot
- Incident Command Post
- Lookout
- Mobile Weather Unit
- Repeater
- Resource Location
- Division Break
- Branch Break
- Completed Line
- Completed Dozer Line
- H - H Completed Hand Line
- R - R Road as Completed Line
- Uncontrolled Fire Edge
- Transmission Lines

DECKER CO-RGF-1388

Air Ops Map 10/7/19

Perimeter as of 10/6/19

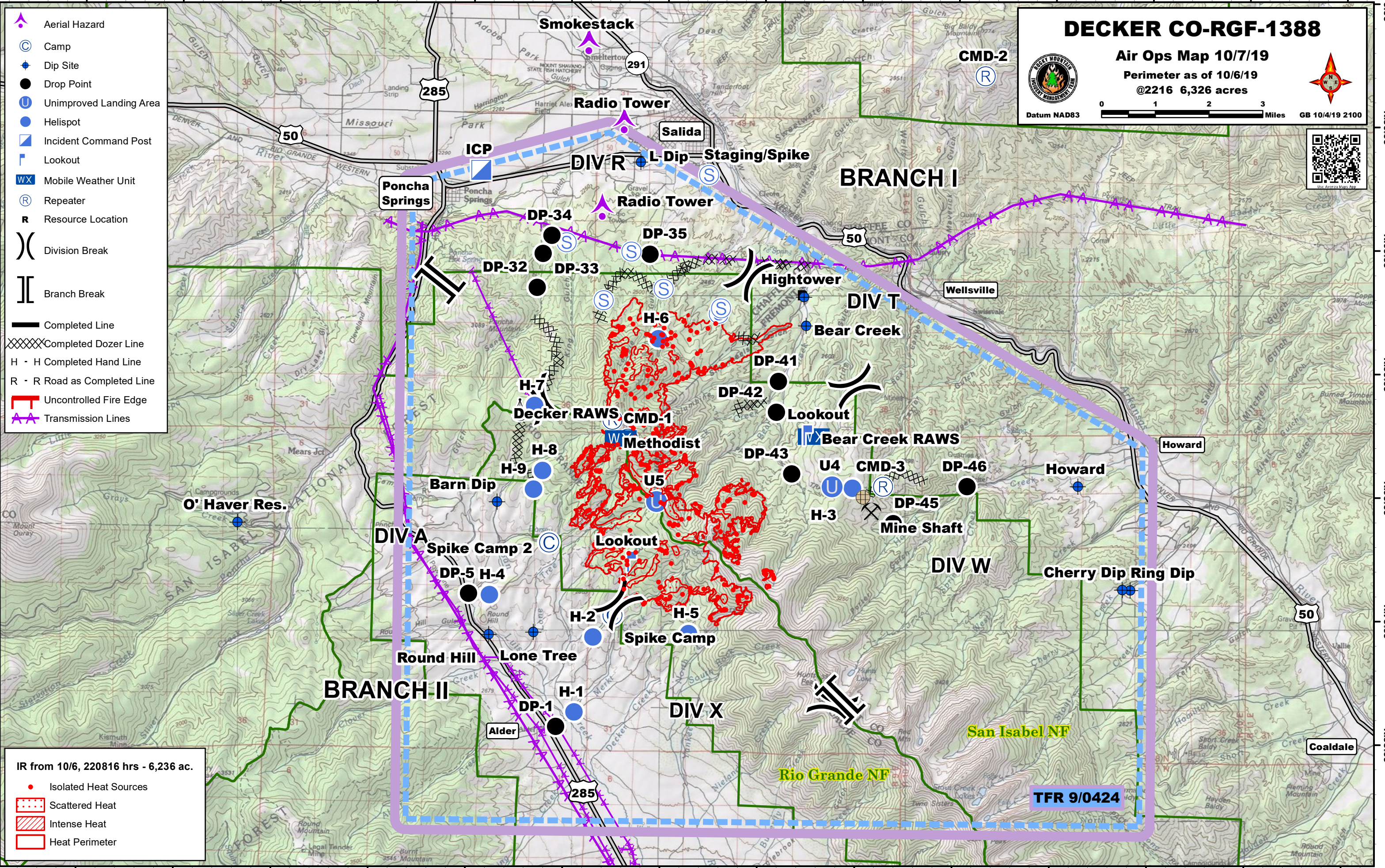
@2216 6,326 acres

Datum NAD83

Miles GB 10/4/19 2100

- IR from 10/6, 220816 hrs - 6,236 ac.**

 - Isolated Heat Sources
 - Scattered Heat
 - Intense Heat
 - Heat Perimeter



106°12'W 106°10'W 106°8'W 106°6'W 106°4'W 106°2'W 106°0'W 105°58'W 105°56'W 105°54'W 105°52'W 105°50'W 105°48'W 105°46'W

Label	Type	Latitude (ddm)	Longitude (ddm)
Radio Tower	Aerial Hazard	38° 31.905' N	106° 00.892' W
Radio Tower	Aerial Hazard	38° 30.503' N	106° 01.326' W
Smokestack	Aerial Hazard	38° 33.180' N	106° 01.636' W
Tower	Aerial Hazard	38° 29.712' N	106° 19.008' W
Spike Camp	Camp	38° 23.988' N	106° 01.027' W
Spike Camp 2	Camp	38° 25.153' N	106° 02.344' W
Barn Dip	Dip Site	38° 25.804' N	106° 03.424' W
Bear Creek	Dip Site	38° 28.707' N	105° 57.103' W
Cherry Dip	Dip Site	38° 24.476' N	105° 50.538' W
Hightower	Dip Site	38° 29.175' N	105° 57.147' W
Howard	Dip Site	38° 26.147' N	105° 51.472' W
L Dip	Dip Site	38° 31.333' N	106° 00.536' W
Lone Tree	Dip Site	38° 23.702' N	106° 02.649' W
O' Haver Res.	Dip Site	38° 25.424' N	106° 08.763' W
Ring Dip	Dip Site	38° 24.469' N	105° 50.376' W
Round Hill	Dip Site	38° 23.654' N	106° 03.565' W
DP-1	Drop Point	38° 22.175' N	106° 02.166' W
DP-32	Drop Point	38° 29.282' N	106° 02.649' W
DP-33	Drop Point	38° 29.834' N	106° 02.531' W
DP-34	Drop Point	38° 30.127' N	106° 02.359' W
DP-35	Drop Point	38° 29.837' N	106° 00.332' W
DP-41	Drop Point	38° 27.800' N	105° 57.661' W
DP-42	Drop Point	38° 27.299' N	105° 57.692' W
DP-43	Drop Point	38° 26.306' N	105° 57.364' W
DP-45	Drop Point	38° 25.516' N	105° 55.267' W
DP-46	Drop Point	38° 26.127' N	105° 53.757' W
DP-5	Drop Point	38° 24.318' N	106° 03.993' W
H-1	Helispot	38° 22.412' N	106° 01.791' W
H-2	Helispot	38° 23.628' N	106° 01.417' W
H-3	Helispot	38° 26.080' N	105° 56.114' W
H-4	Helispot	38° 24.297' N	106° 03.559' W
H-5	Helispot	38° 23.703' N	105° 59.455' W
H-6	Helispot	38° 28.473' N	106° 00.138' W
H-7	Helispot	38° 27.367' N	106° 02.674' W
H-8	Helispot	38° 26.317' N	106° 02.494' W
H-9	Helispot	38° 26.011' N	106° 02.674' W
ICP	Incident Command Post	38° 31.170' N	106° 03.828' W
Lookout	Lookout	38° 24.853' N	106° 00.692' W
Lookout	Lookout	38° 26.929' N	105° 57.097' W
Bear Creek RAWs	Mobile Weather Unit	38° 26.913' N	105° 56.929' W
Decker RAWs	Mobile Weather Unit	38° 26.846' N	106° 00.904' W
CMD-1	Repeater	38° 26.845' N	106° 00.742' W
CMD-2	Repeater	38° 32.774' N	105° 53.453' W
CMD-3	Repeater	38° 26.110' N	105° 55.485' W
Methodist	Repeater	38° 27.147' N	106° 01.066' W
Air Monitor	Resource Location	38° 29.196' N	105° 57.183' W
	Sling Site	38° 27.295' N	106° 02.982' W
Staging/Spike	Staging Area	38° 31.129' N	105° 59.130' W
	Staging Area	38° 29.083' N	106° 01.277' W
	Staging Area	38° 29.275' N	106° 00.042' W
	Staging Area	38° 28.886' N	105° 58.901' W
	Staging Area	38° 30.015' N	106° 02.050' W
	Staging Area	38° 29.876' N	106° 00.717' W
	Staging Area	38° 28.969' N	105° 58.857' W
U4	Unimproved Landing Area	38° 26.100' N	105° 56.529' W
U5	Unimproved Landing Area	38° 25.833' N	106° 00.144' W