

106°1'W 106°0'W 105°59'W 105°58'W 105°57'W 105°56'W 105°55'W 105°54'W 105°53'W 105°52'W 105°51'W

DECKER CO-RGF 1388

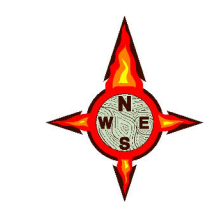
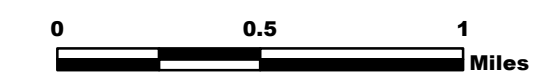
Divs W&T 10/14/2019

Perimeter as of 10/12/2019

@ 1902 7,326 acres



Datum NAD83



NB 10/13/19 2230

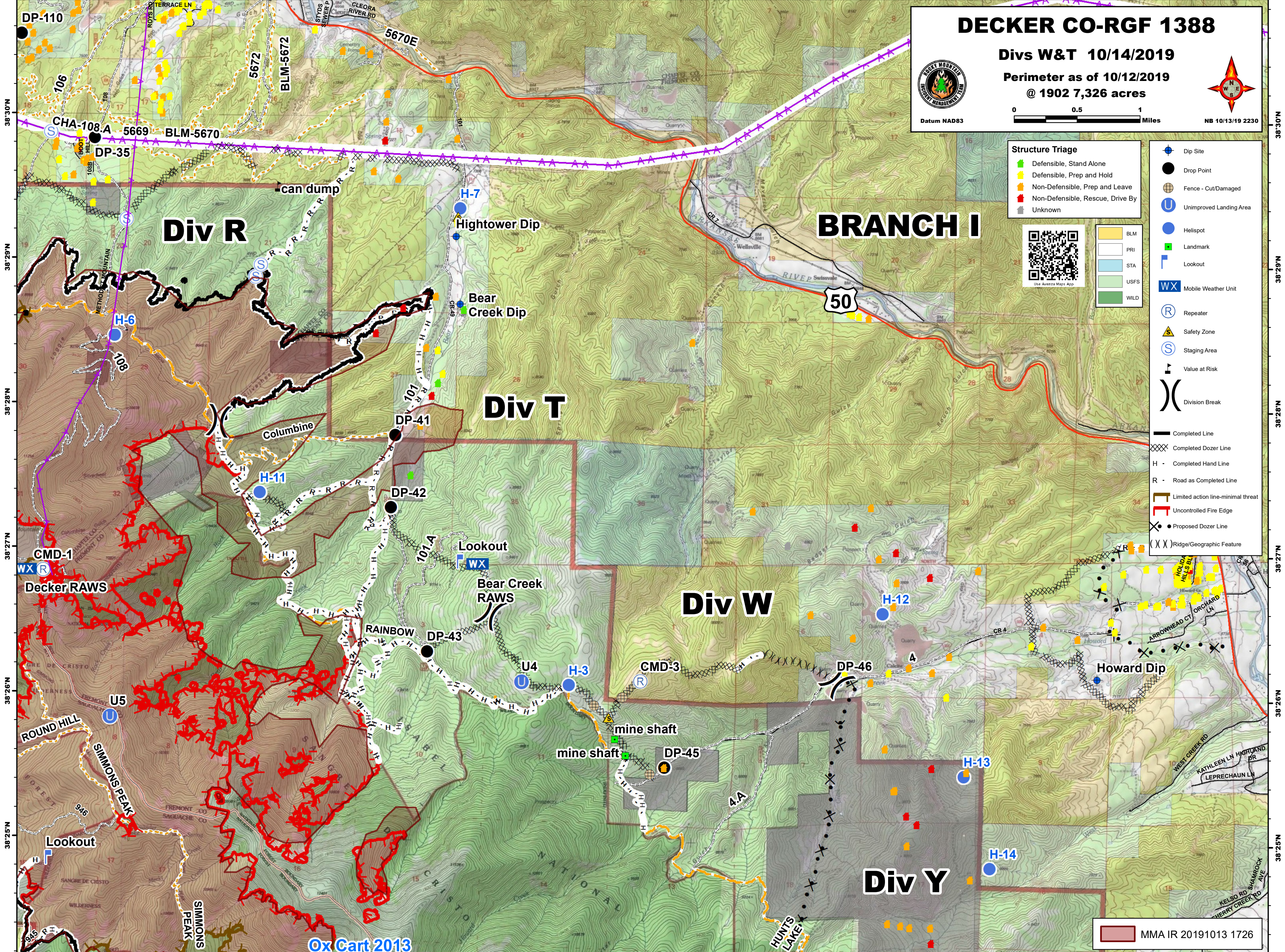
Structure Triage

- Defensible, Stand Alone
- Defensible, Prep and Hold
- Non-Defensible, Prep and Leave
- Non-Defensible, Rescue, Drive By
- Unknown

- Dip Site
- Drop Point
- Fence - Cut/Damaged
- Unimproved Landing Area
- Helispot
- Landmark
- Lookout
- WX Mobile Weather Unit
- Repeater
- Safety Zone
- Staging Area
- Value at Risk
- Division Break
- Completed Line
- Completed Dozer Line
- Completed Hand Line
- Road as Completed Line
- Limited action line-minimal threat
- Uncontrolled Fire Edge
- Proposed Dozer Line
- Ridge/Geographic Feature



- BLM
- PRI
- STA
- USFS
- WILD



Ox Cart 2013

MMA IR 20191013 1726

106°0'W 105°59'W 105°58'W 105°57'W 105°56'W 105°55'W 105°54'W 105°53'W 105°52'W 105°51'W 105°50'W