

# DECKER CO-RGF-1388

Air Ops Map 10/19/19

Perimeter as of 10/17/19

@ 2140 8,694 acres



Datum NAD83



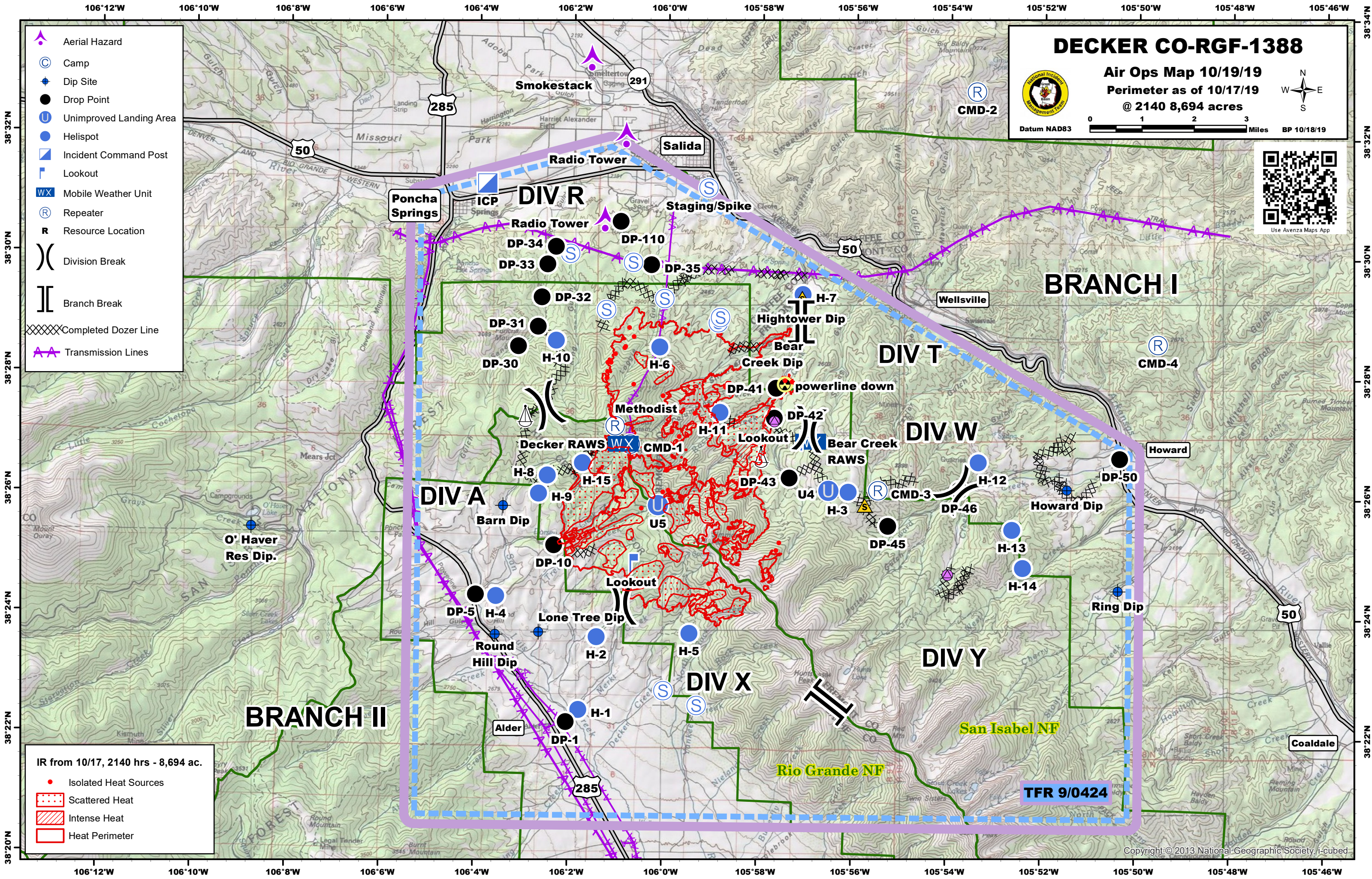
BP 10/18/19



Use Avenza Maps App

- Aerial Hazard
- Camp
- Dip Site
- Drop Point
- Unimproved Landing Area
- Helispot
- Incident Command Post
- Lookout
- Mobile Weather Unit
- Repeater
- Resource Location
- Division Break
- Branch Break
- Completed Dozer Line
- Transmission Lines

- IR from 10/17, 2140 hrs - 8,694 ac.
- Isolated Heat Sources
  - Scattered Heat
  - Intense Heat
  - Heat Perimeter



Type	Label	Latitude (ddm)	Longitude (ddm)
Aerial Hazard	Radio Tower	38° 31.905' N	106° 00.892' W
Aerial Hazard	Radio Tower	38° 30.503' N	106° 01.326' W
Aerial Hazard	Smokestack	38° 33.180' N	106° 01.636' W
Aerial Hazard	Tower	38° 29.712' N	106° 19.008' W
Dip Site	Barn Dip	38° 25.804' N	106° 03.424' W
Dip Site	Bear Creek Dip	38° 28.707' N	105° 57.103' W
Dip Site	Hightower Dip	38° 29.175' N	105° 57.147' W
Dip Site	Howard Dip	38° 26.147' N	105° 51.472' W
Dip Site	Lone Tree Dip	38° 23.702' N	106° 02.649' W
Dip Site	O' Haver Res Dip.	38° 25.424' N	106° 08.763' W
Dip Site	Ring Dip	38° 24.469' N	105° 50.376' W
Dip Site	Round Hill Dip	38° 23.654' N	106° 03.565' W
Drop Point	DP-1	38° 22.203' N	106° 02.059' W
Drop Point	DP-5	38° 24.318' N	106° 03.993' W
Drop Point	DP-10	38° 25.153' N	106° 02.344' W
Drop Point	DP-30	38° 28.464' N	106° 03.139' W
Drop Point	DP-31	38° 28.789' N	106° 02.719' W
Drop Point	DP-32	38° 29.282' N	106° 02.649' W
Drop Point	DP-33	38° 29.834' N	106° 02.531' W
Drop Point	DP-34	38° 30.127' N	106° 02.359' W
Drop Point	DP-35	38° 29.837' N	106° 00.332' W
Drop Point	DP-41	38° 27.800' N	105° 57.661' W
Drop Point	DP-42	38° 27.299' N	105° 57.692' W
Drop Point	DP-43	38° 26.306' N	105° 57.364' W
Drop Point	DP-45	38° 25.516' N	105° 55.267' W
Drop Point	DP-46	38° 26.127' N	105° 53.757' W
Drop Point	DP-50	38° 26.668' N	105° 50.361' W
Drop Point	DP-110	38° 30.555' N	106° 00.985' W
Hazard	Downed Powerline	38° 27.867' N	105° 57.476' W
Helispot	H-1	38° 22.412' N	106° 01.791' W
Helispot	H-2	38° 23.628' N	106° 01.417' W
Helispot	H-3	38° 26.080' N	105° 56.114' W
Helispot	H-4	38° 24.297' N	106° 03.559' W
Helispot	H-5	38° 23.703' N	105° 59.455' W
Helispot	H-6	38° 28.473' N	106° 00.138' W
Helispot	H-7	38° 29.370' N	105° 57.109' W
Helispot	H-8	38° 26.317' N	106° 02.494' W
Helispot	H-9	38° 26.011' N	106° 02.674' W
Helispot	H-10	38° 28.566' N	106° 02.335' W
Helispot	H-11	38° 27.393' N	105° 58.846' W
Helispot	H-12	38° 26.593' N	105° 53.362' W
Helispot	H-13	38° 25.473' N	105° 52.635' W
Helispot	H-14	38° 24.837' N	105° 52.399' W
Helispot	H-15	38° 26.530' N	106° 01.750' W
Incident Command Post	ICP	38° 31.170' N	106° 03.828' W
Lookout	Lookout	38° 24.853' N	106° 00.692' W
Lookout	Lookout	38° 26.929' N	105° 57.097' W
Mobile Weather Unit	Bear Creek RAWs	38° 26.913' N	105° 56.929' W
Mobile Weather Unit	Decker RAWs	38° 26.846' N	106° 00.904' W
Repeater	CMD-1	38° 26.845' N	106° 00.742' W
Repeater	CMD-2	38° 32.774' N	105° 53.453' W
Repeater	CMD-3	38° 26.110' N	105° 55.485' W
Repeater	CMD-4	38° 28.577' N	105° 49.566' W
Repeater	Methodist	38° 27.147' N	106° 01.066' W
Safety Zone		38° 29.308' N	105° 57.126' W
Safety Zone		38° 25.858' N	105° 55.760' W
Sling Site		38° 26.659' N	105° 57.967' W
Sling Site		38° 27.295' N	106° 02.982' W
Staging Area		38° 29.083' N	106° 01.277' W
Staging Area		38° 28.886' N	105° 58.901' W
Staging Area		38° 29.876' N	106° 00.717' W
Staging Area		38° 22.498' N	105° 59.289' W
Staging Area		38° 28.969' N	105° 58.857' W
Staging Area		38° 30.015' N	106° 02.050' W
Staging Area		38° 22.739' N	106° 00.000' W
Staging Area		38° 29.275' N	106° 00.042' W
Staging Area	Staging/Spike	38° 31.129' N	105° 59.130' W
Unimproved Landing Area	U4	38° 26.100' N	105° 56.529' W
Unimproved Landing Area	U5	38° 25.833' N	106° 00.144' W