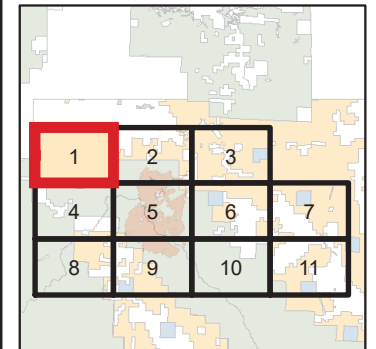
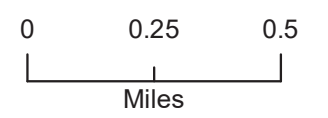
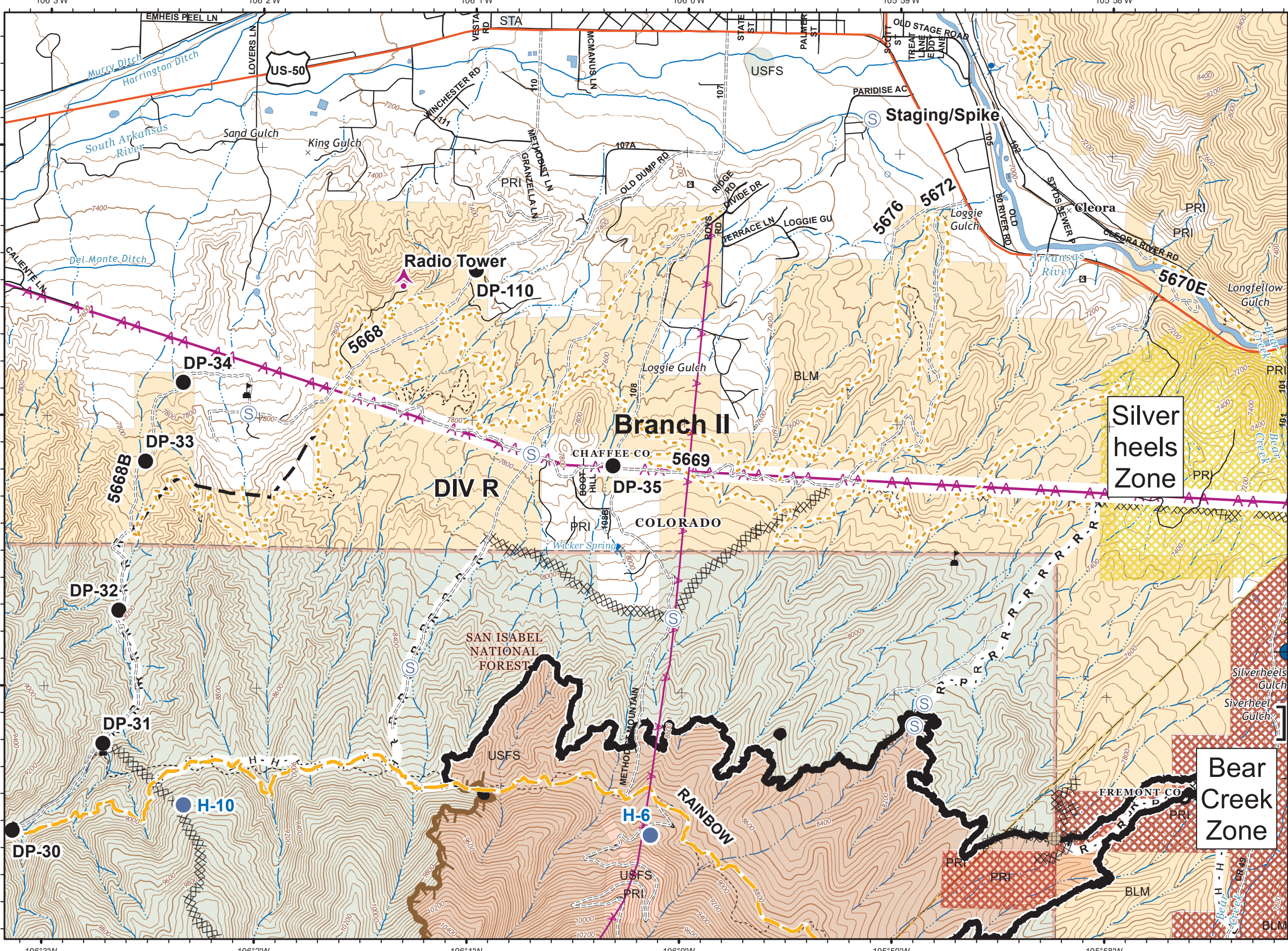
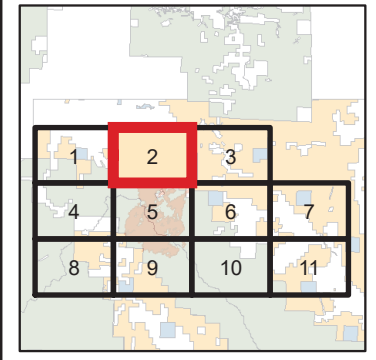
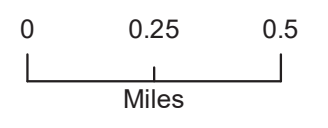


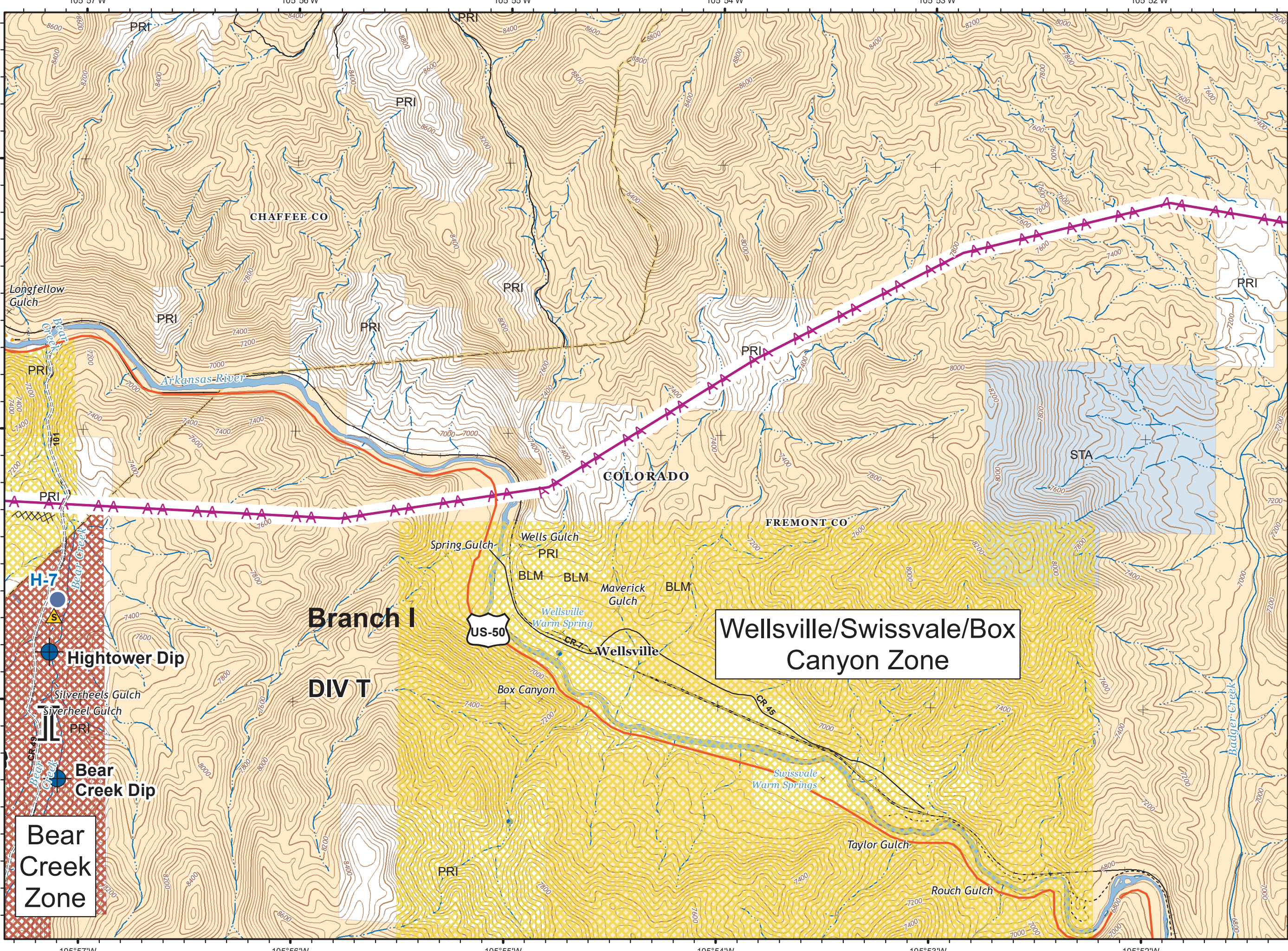
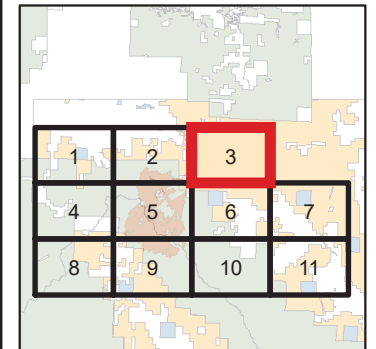
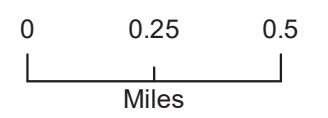
IAP
 Decker Fire
 CO_RGF-1388
 10/20/2019
 8,705 Acres
Page 1



-  Drop Point
-  Incident Command Post
-  Value at Risk
-  Access or Improved Road



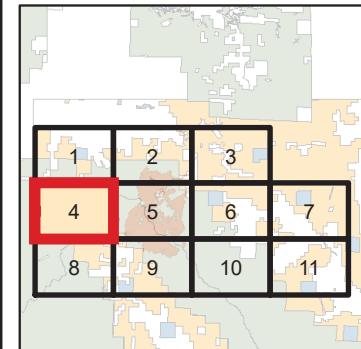
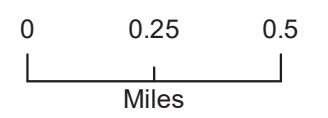
- Aerial Hazard
- Culvert
- Dip Site
- Drop Point
- Fence - Cut/Damaged
- Helispot
- Safety Zone
- Staging Area
- Value at Risk
- Branch Break
- Completed Line
- Completed Dozer Line
- Completed Hand Line
- Road as Completed Line
- Limited Action Line - Minimal Threat
- Access or Improved Road
- Planned Fire Line
- Evacuation Type**
- Evacuated
- Pre-Evacuated



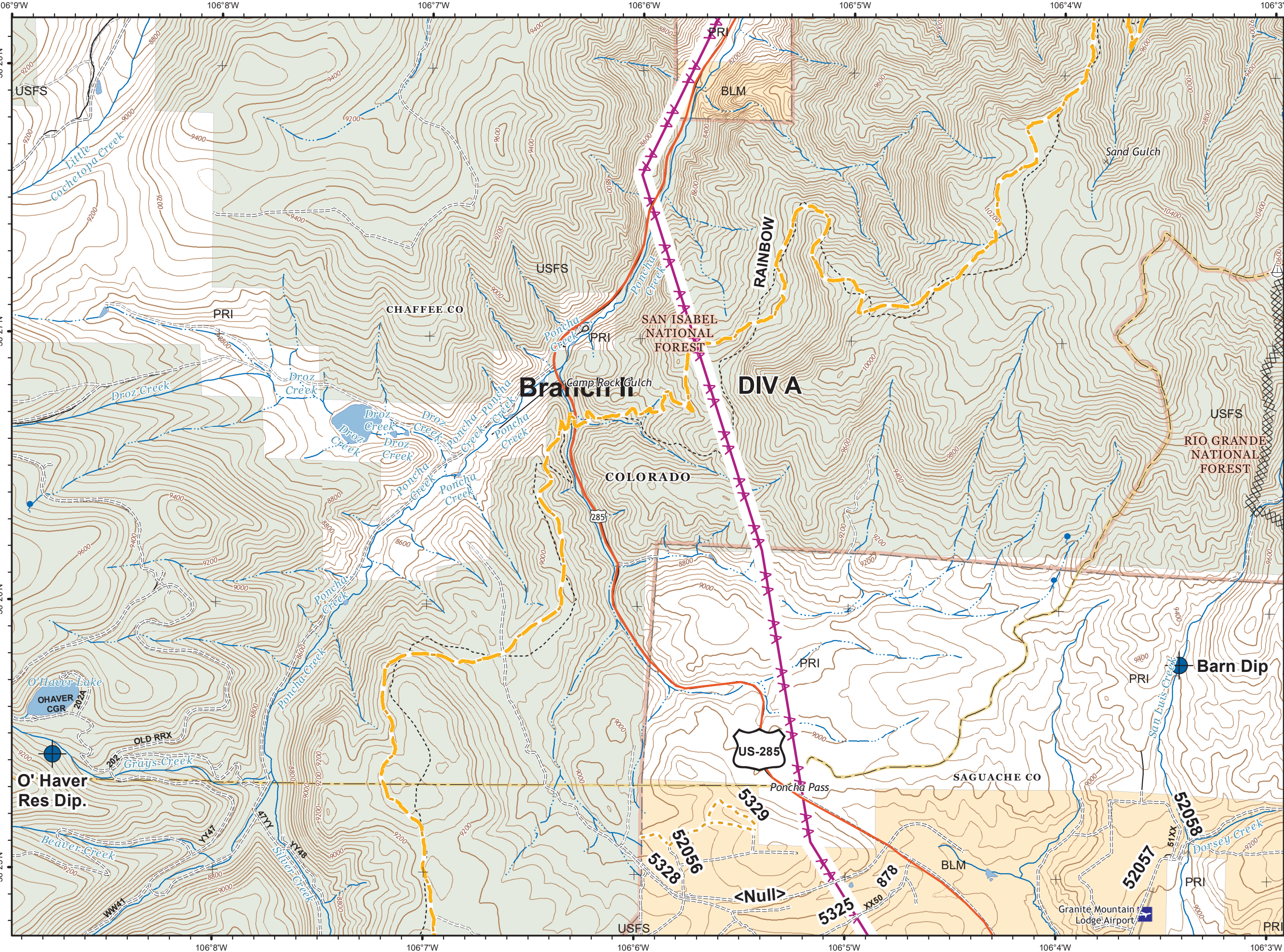
- Dip Site
 - Heliport
 - Safety Zone
 - Branch Break
 - Completed Line
 - Completed Dozer Line
 - Completed Hand Line
- Evacuation Type**
- Evacuated
 - Pre-Evacuated

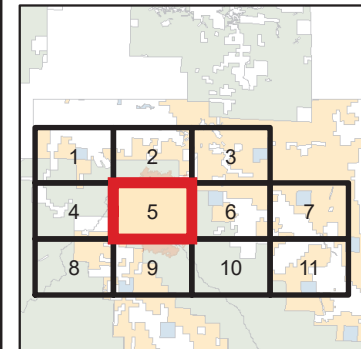
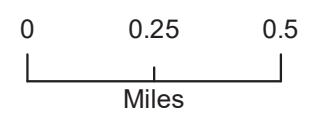
Wellsville/Swissvale/Box Canyon Zone

Bear Creek Zone

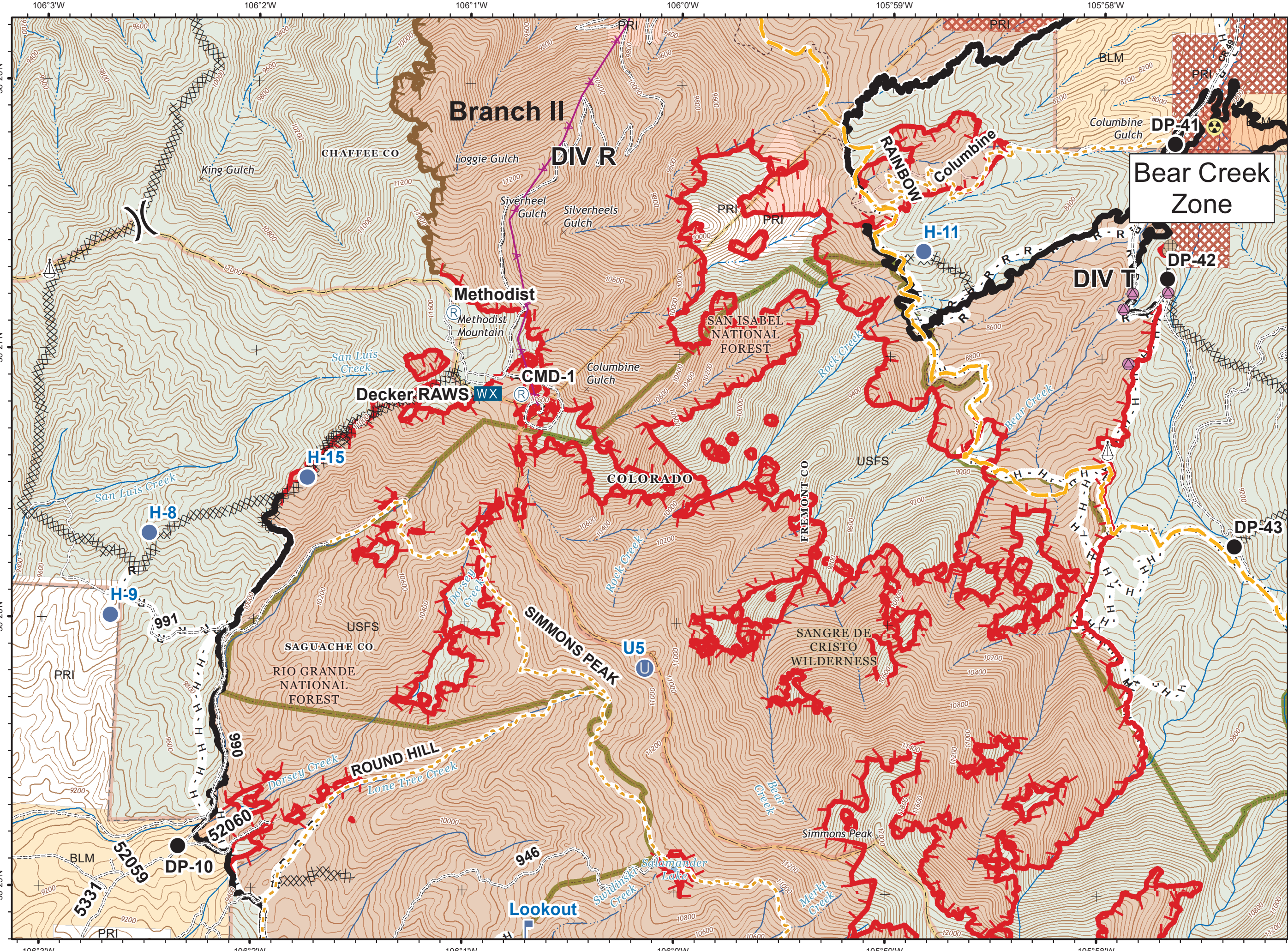


- Dip Site
- Sling Site
- Completed Dozer Line

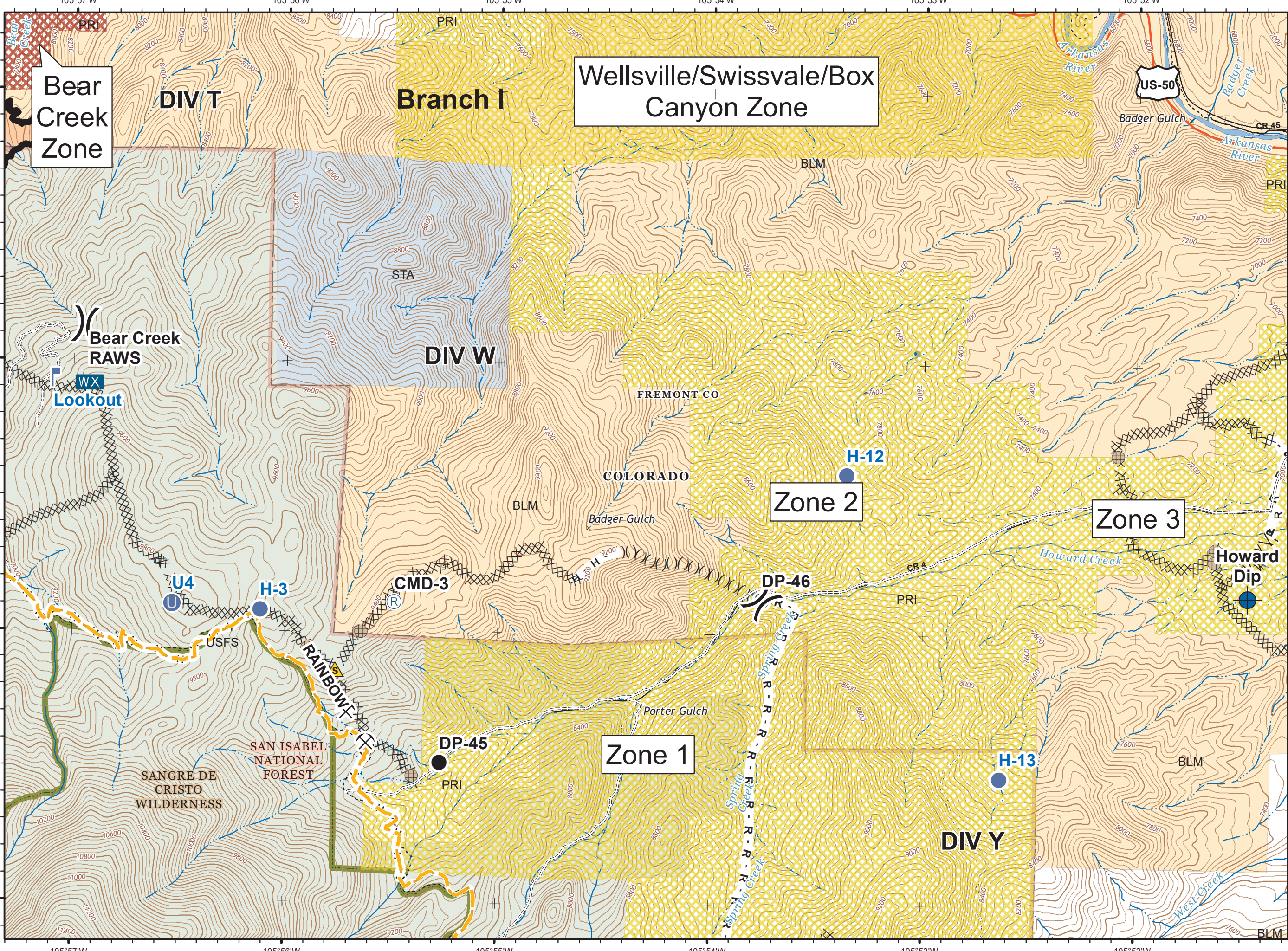
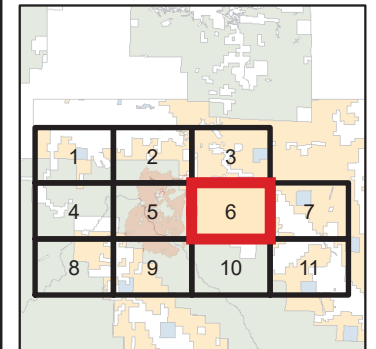
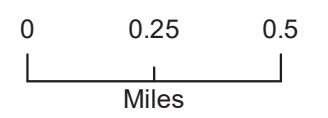


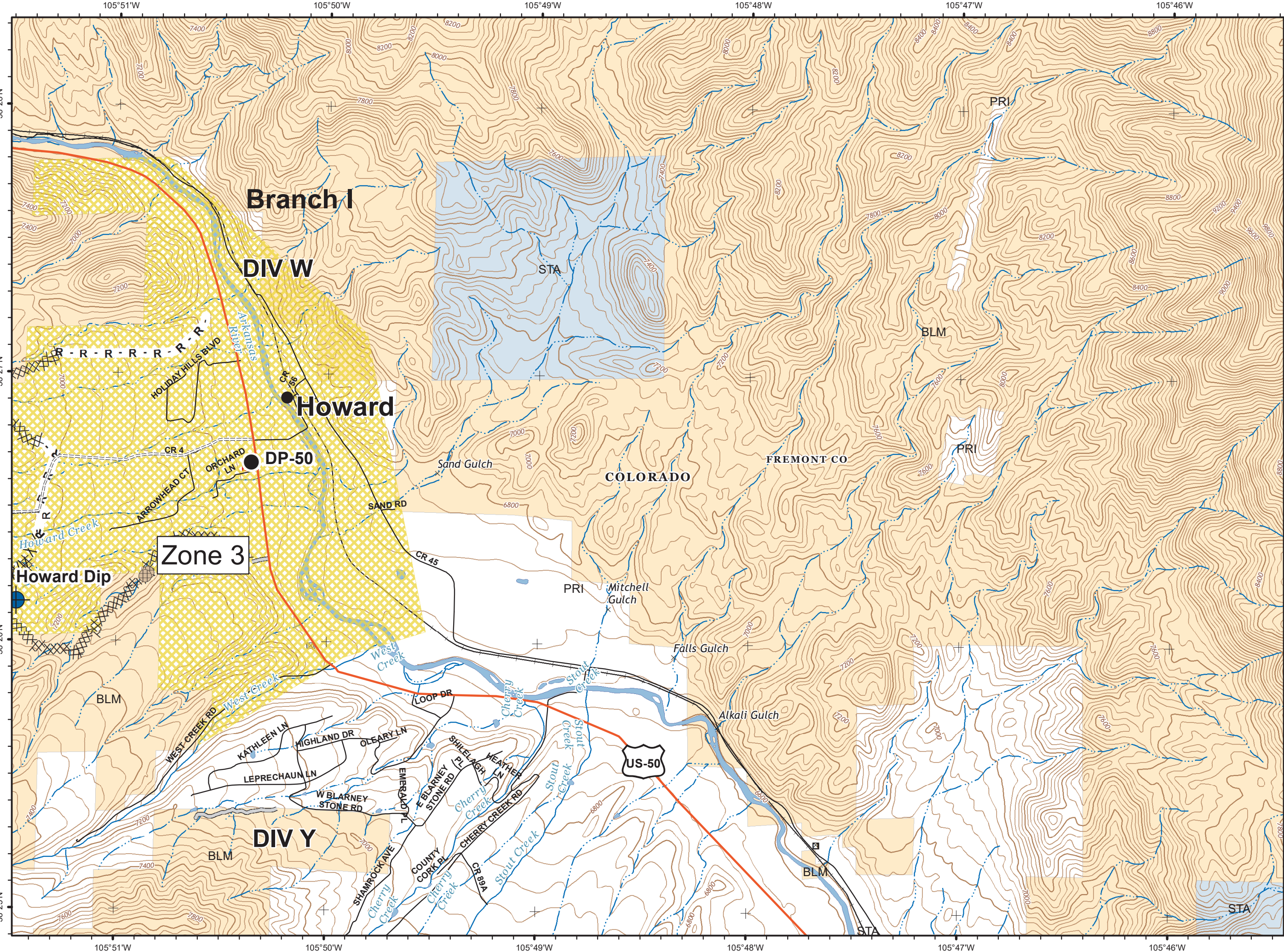
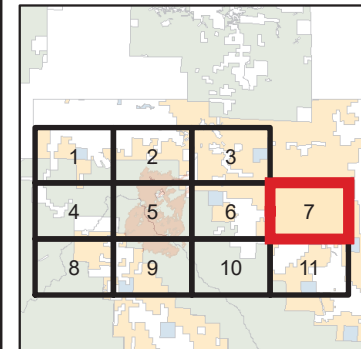
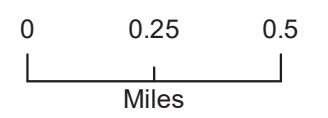


Bear Creek Zone

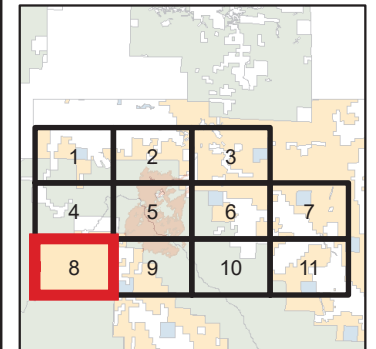
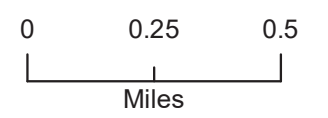
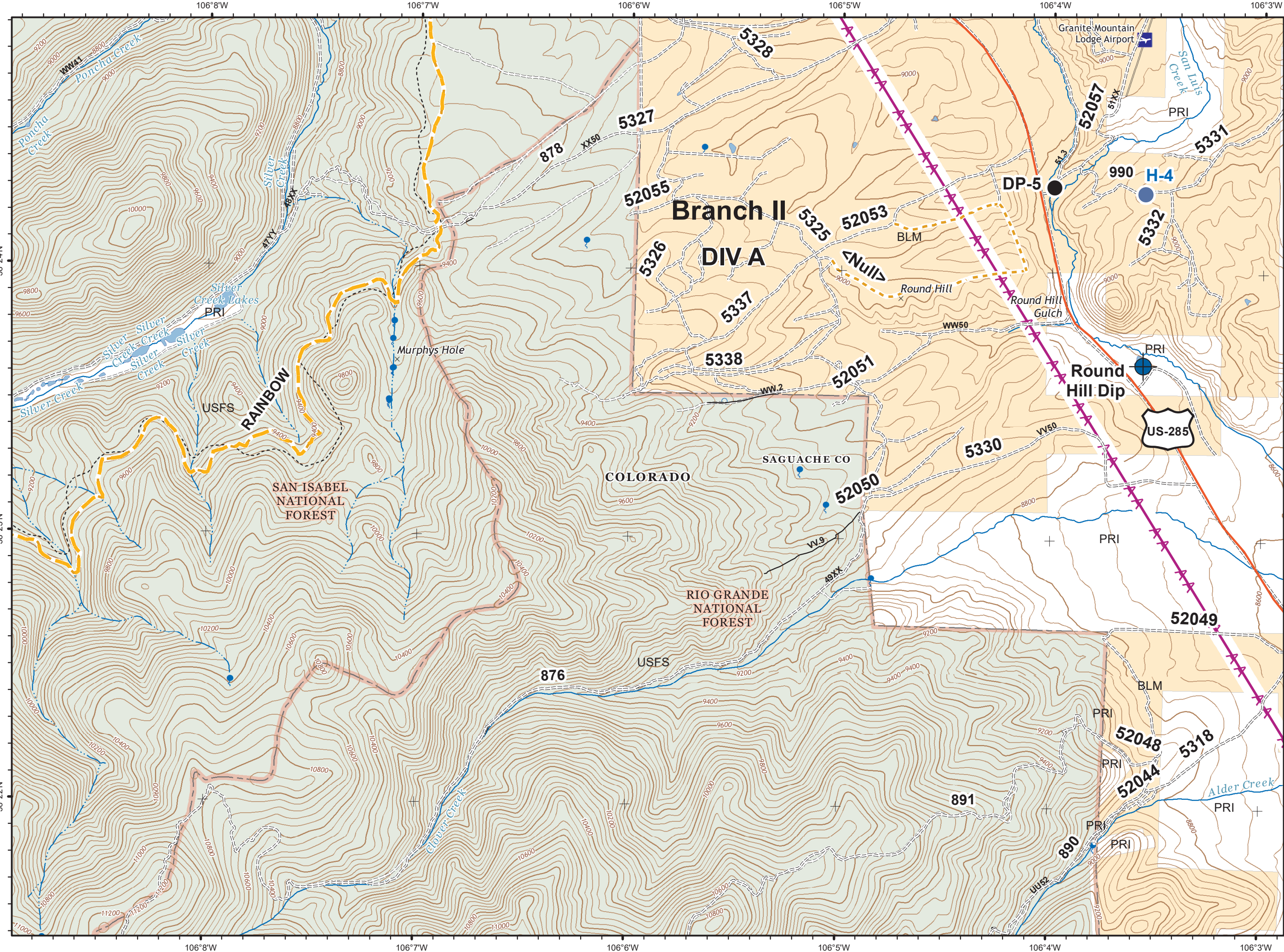


- Drop Point
 - Fence - Cut/Damaged
 - Hazard
 - Unimproved Landing Area
 - HeliSpot
 - Lookout
 - Mobile Weather Unit
 - Repair Point
 - Repeater
 - Sling Site
 - Value at Risk
 - Division Break
 - Completed Line
 - Completed Dozer Line
 - Completed Hand Line
 - Road as Completed Line
 - Limited Action Line - Minimal Threat
 - Uncontrolled Fire Edge
- Evacuation Type**
- Evacuated
 - Wilderness

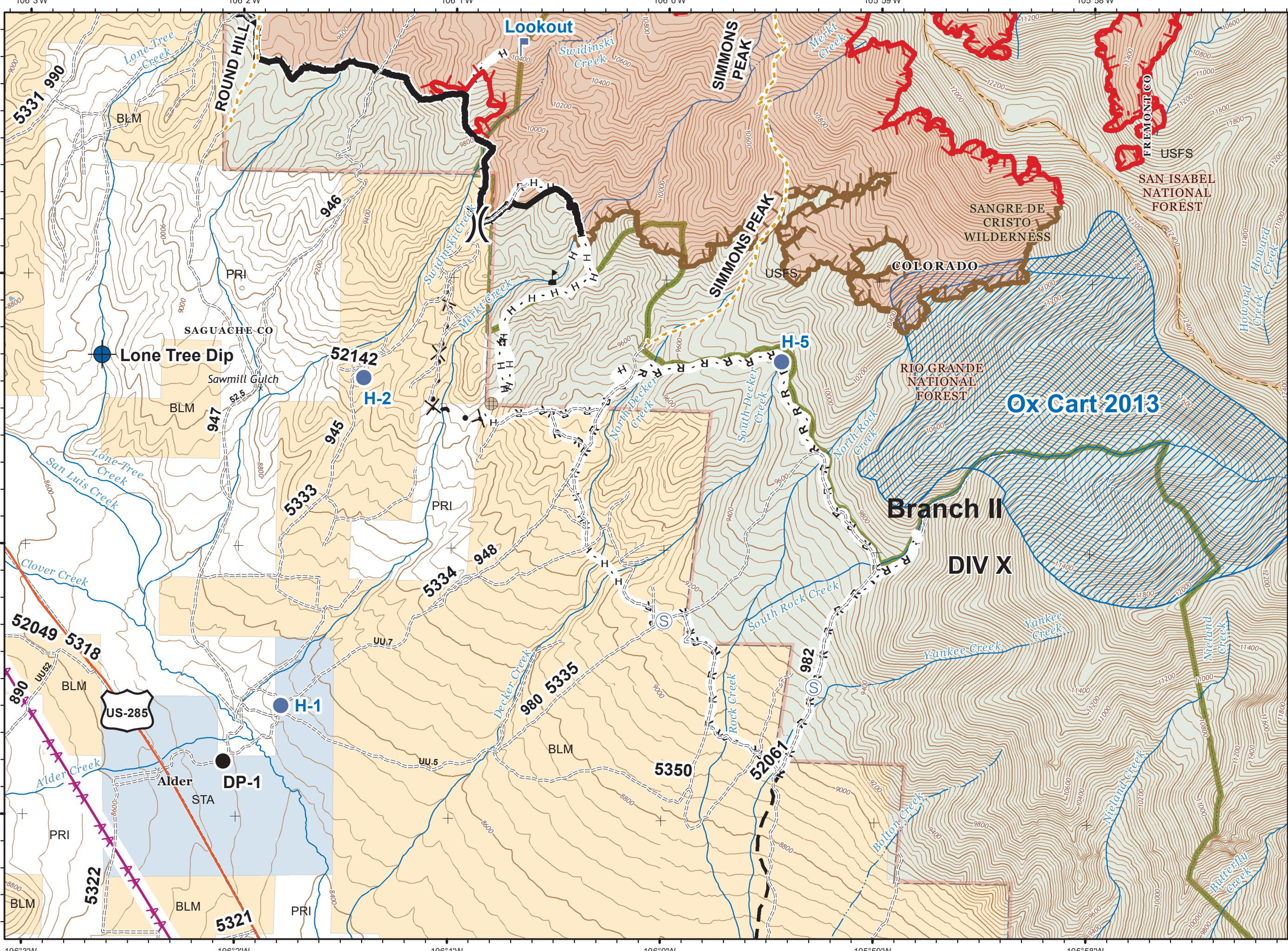
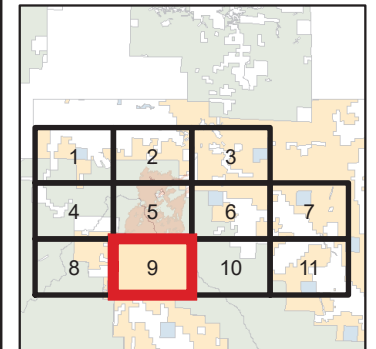
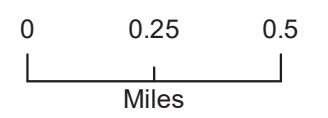




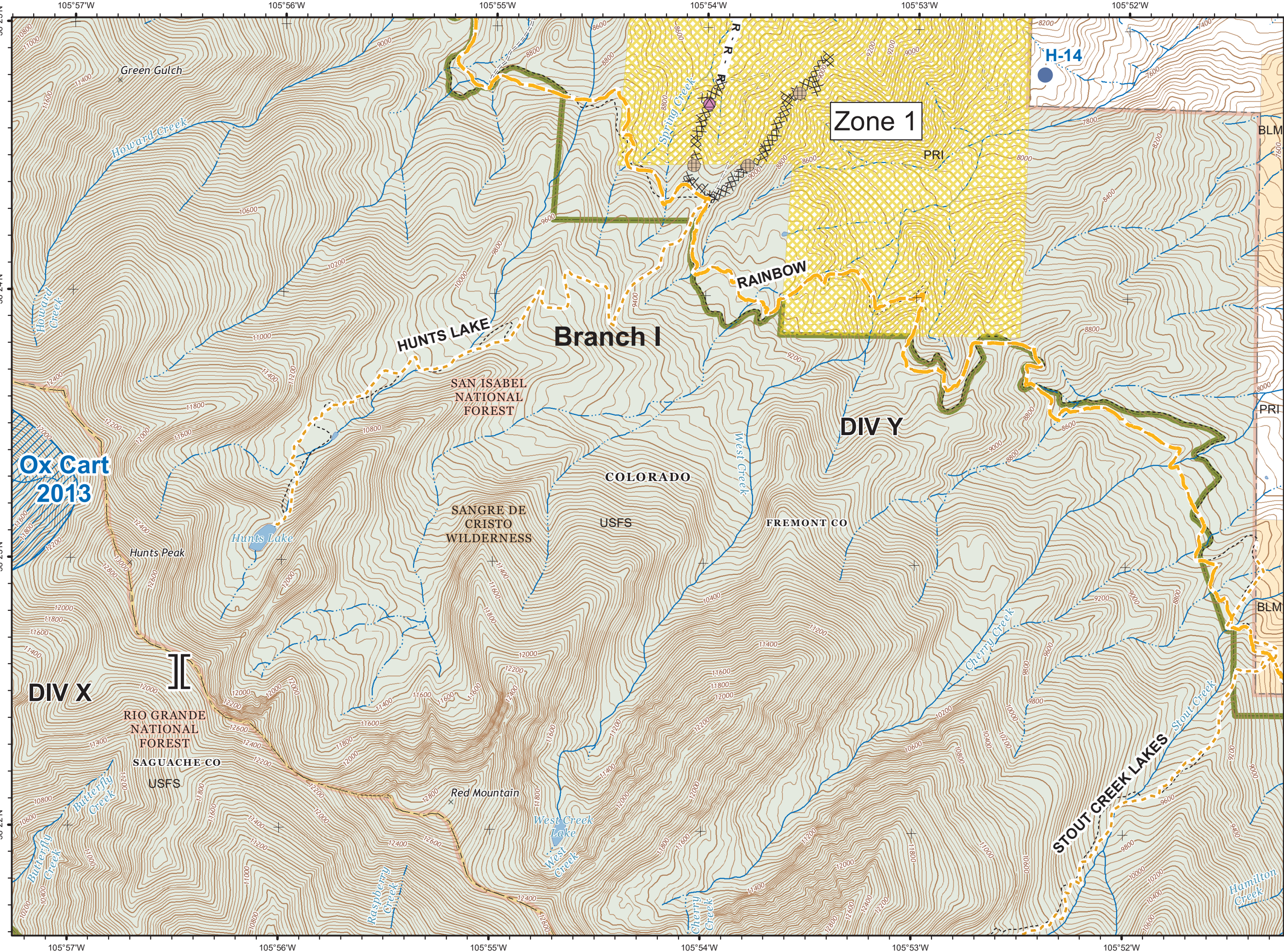
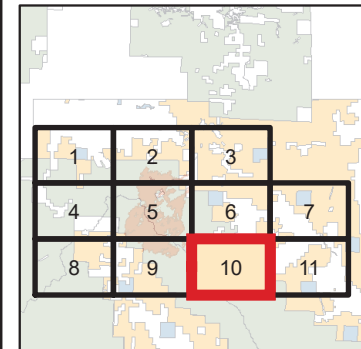
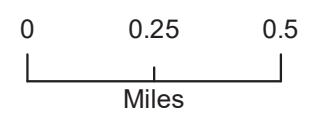
- Dip Site
- Drop Point
- Fence - Cut/Damaged
- Completed Dozer Line
- Road as Completed Line
- Access or Improved Road
- Line Break Completed
- Evacuation Type**
- Pre-Evacuated



- Dip Site
- Drop Point
- Hellsport



- Dip Site
- Drop Point
- Fence - Cut/Damaged
- Helispot
- Lookout
- Staging Area
- Value at Risk
- Division Break
- Completed Line
- Completed Hand Line
- Road as Completed Line
- Limited Action Line - Minimal Threat
- Uncontrolled Fire Edge
- Proposed Dozer Line
- Planned Fire Line
- Wildfires within 10 years
- Wilderness



- Fence - Cut/Damaged
- HeliSpot
- Repair Point
- Branch Break
- Completed Dozer Line
- R - Road as Completed Line
- Wildfires within 10 years
- Evacuation Type
Pre-Evacuated
- Wilderness

