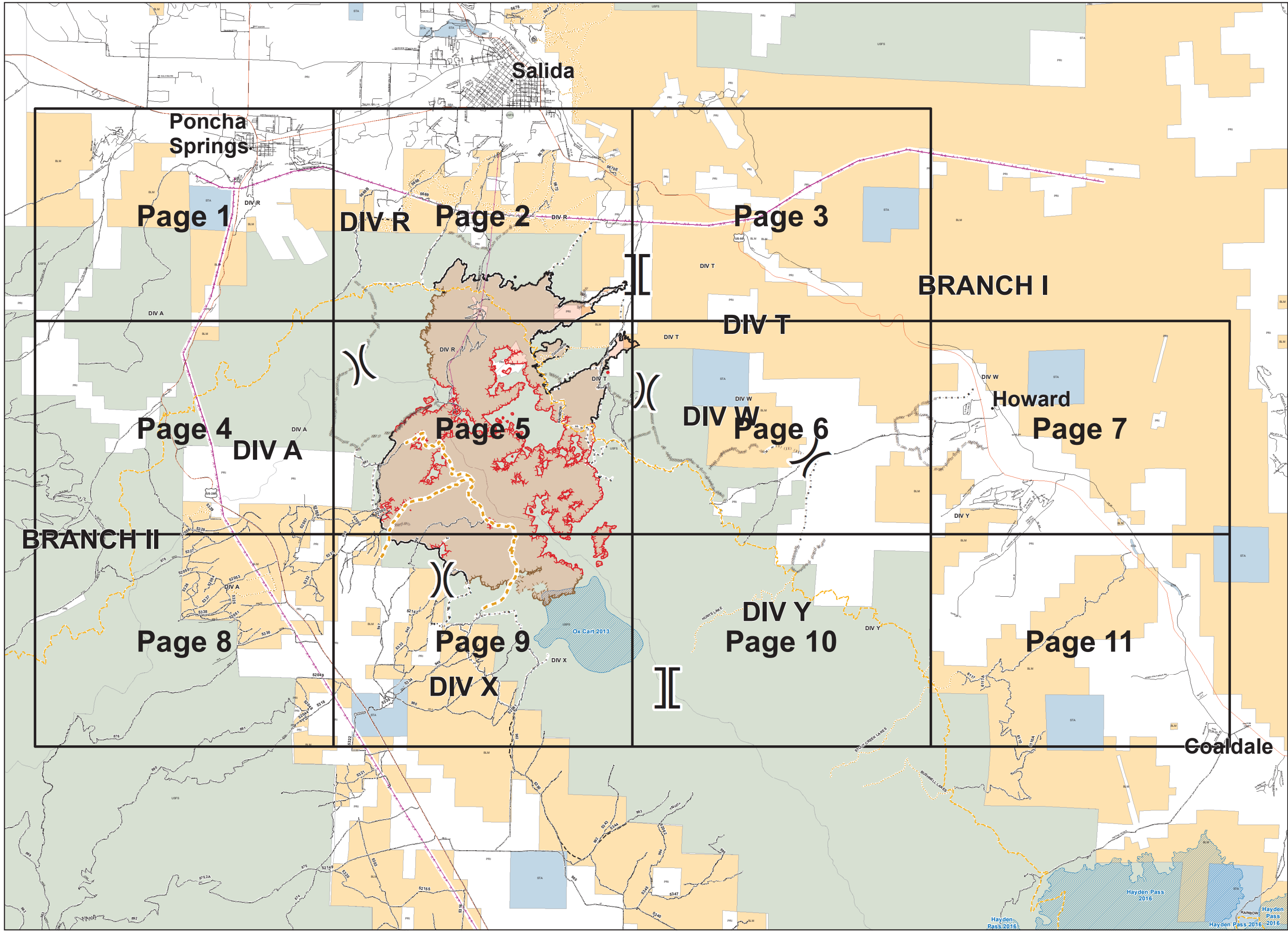
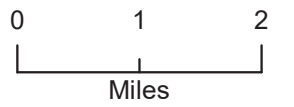
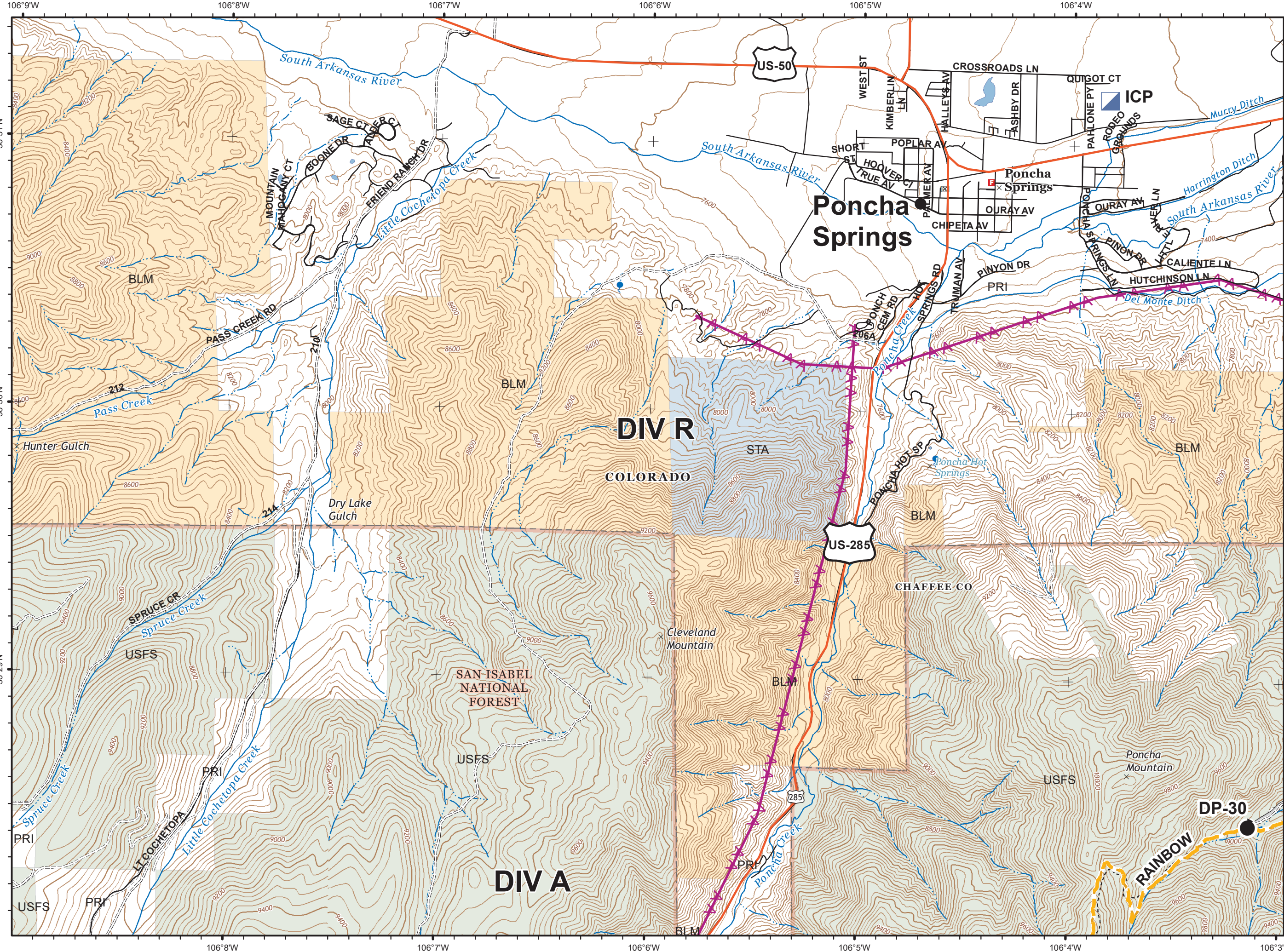


**IAP Index**  
**Decker Fire**  
**CO\_RGF-1388**  
**10/21/2019**  
**8,723 Acres**

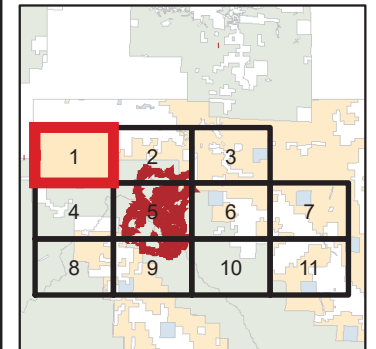
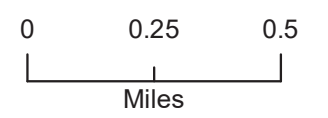


- ( ) Division Break
- || Branch Break
- Completed Line
- XXXXX Completed Dozer Line
- H - H - Completed Hand Line
- R - R - Road as Completed Line
- Limited Action Line - Minimal Threat
- Uncontrolled Fire Edge
- Access or Improved Road
- ~ Line Break Completed
- ⊗ Proposed Dozer Line
- Planned Fire Line
- ( )( ) Ridge/Geographic Feature
- ▨ Wildfires within 10 years
- OWNER**
- BLM
- PRI
- STA
- USFS



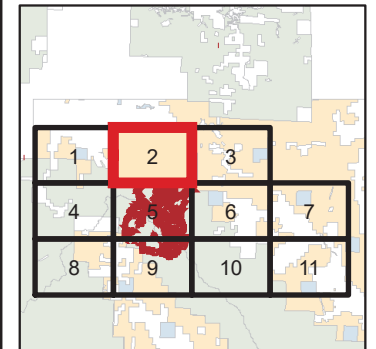
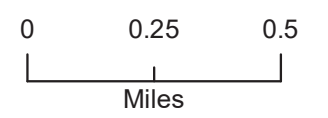
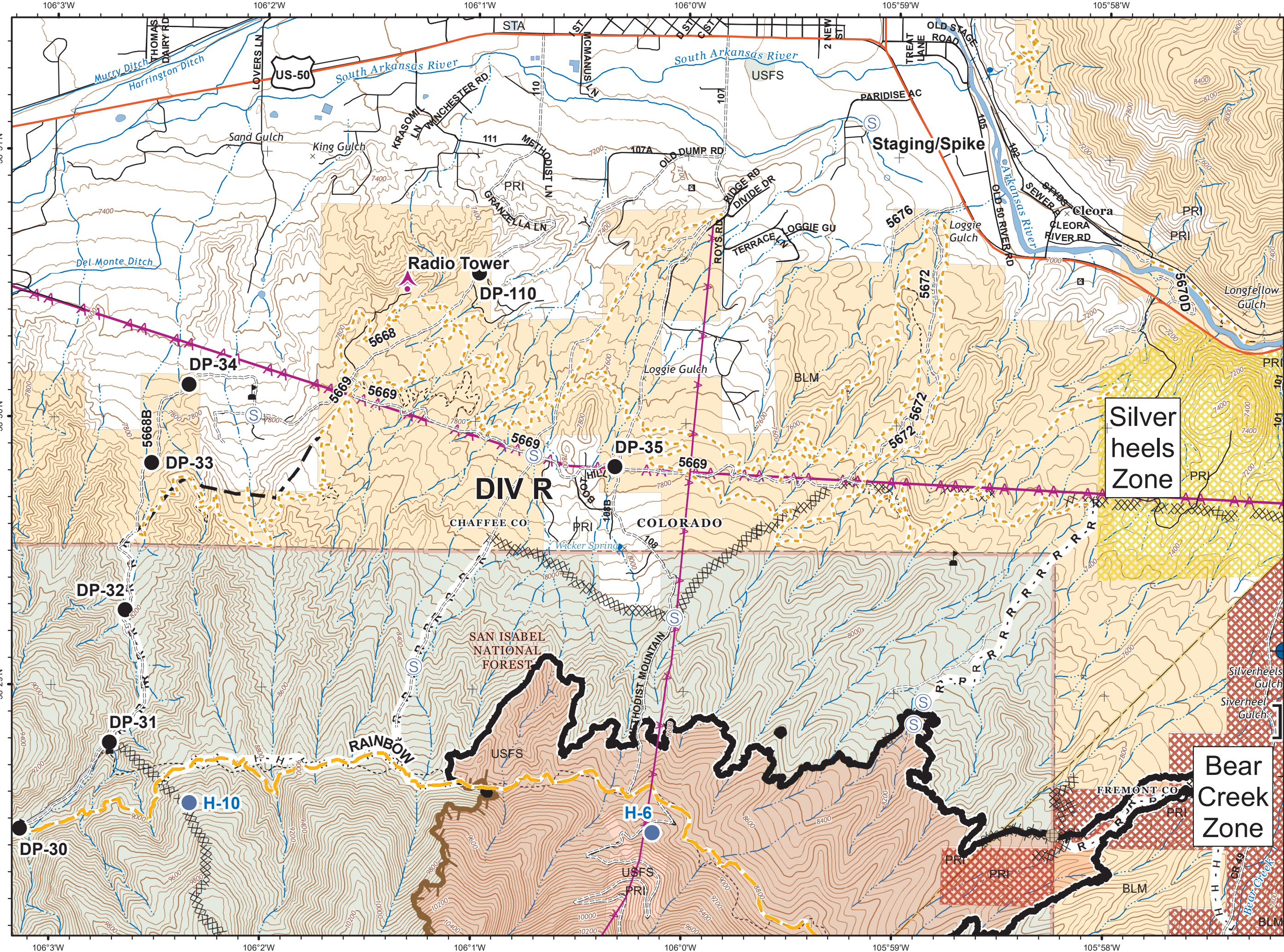


**IAP**  
 Decker Fire  
 CO\_RGF-1388  
 10/21/2019  
 8,723 Acres  
**Page 1**



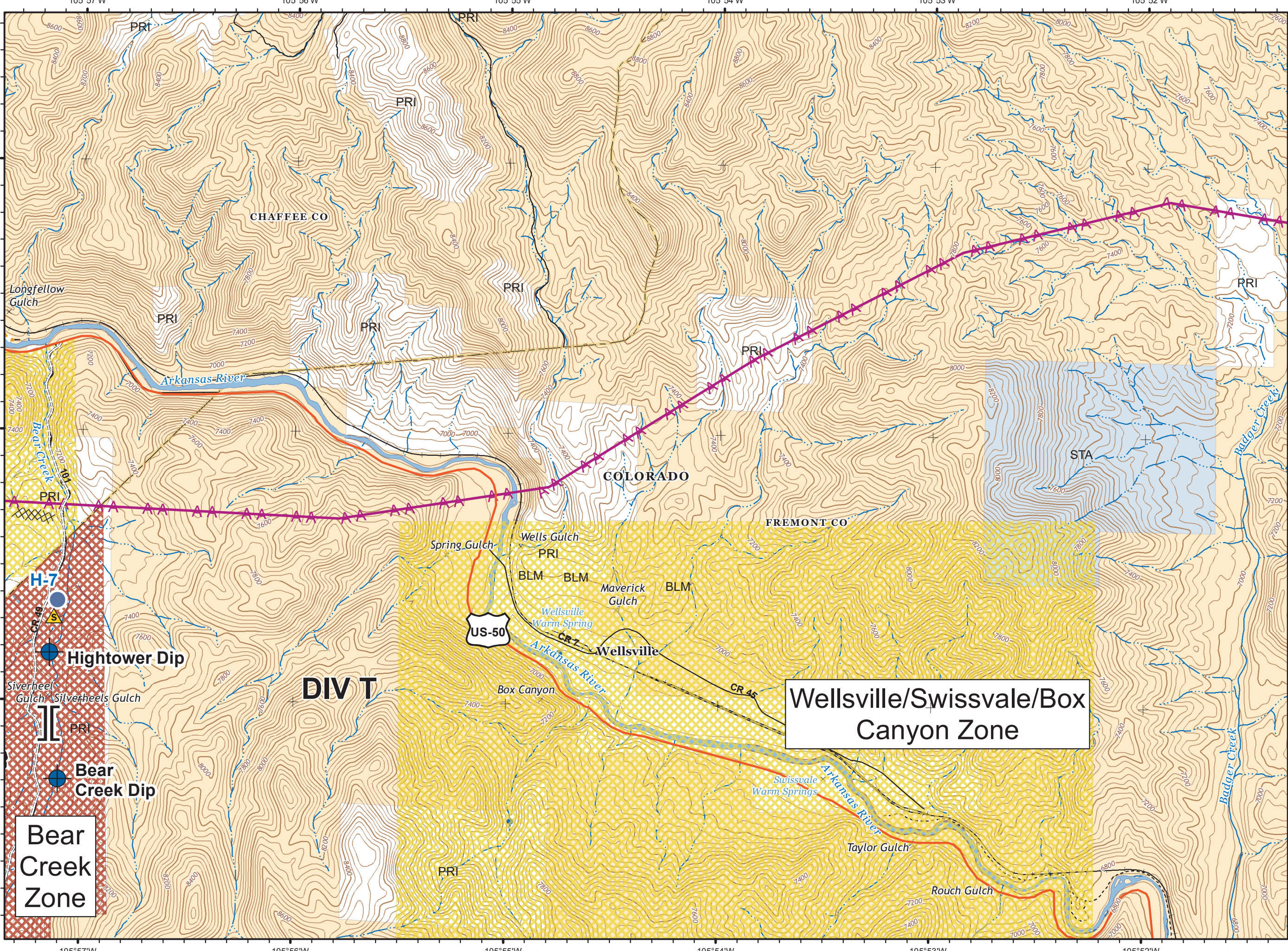
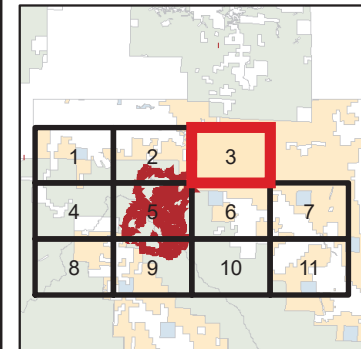
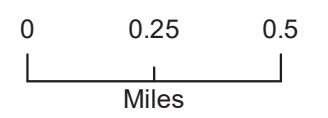
-  Drop Point
-  Incident Command Post
-  Value at Risk
-  Access or Improved Road





- Aerial Hazard
- Culvert
- Dip Site
- Drop Point
- Fence - Cut/Damaged
- Helispot
- Safety Zone
- Staging Area
- Value at Risk
- Branch Break
- Completed Line
- Completed Dozer Line
- Completed Hand Line
- Road as Completed Line
- Limited Action Line - Minimal Threat
- Access or Improved Road
- Planned Fire Line
- Evacuation Type**
- Evacuated
- Pre-Evacuated



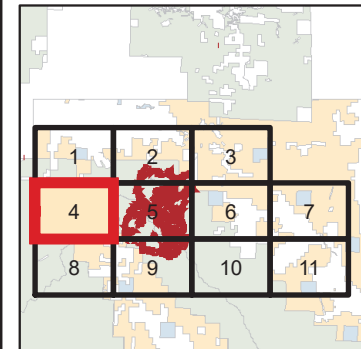
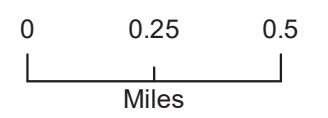


- Dip Site
  - Heliport
  - Safety Zone
  - Branch Break
  - Completed Line
  - Completed Dozer Line
  - Completed Hand Line
- Evacuation Type**
- Evacuated
  - Pre-Evacuated

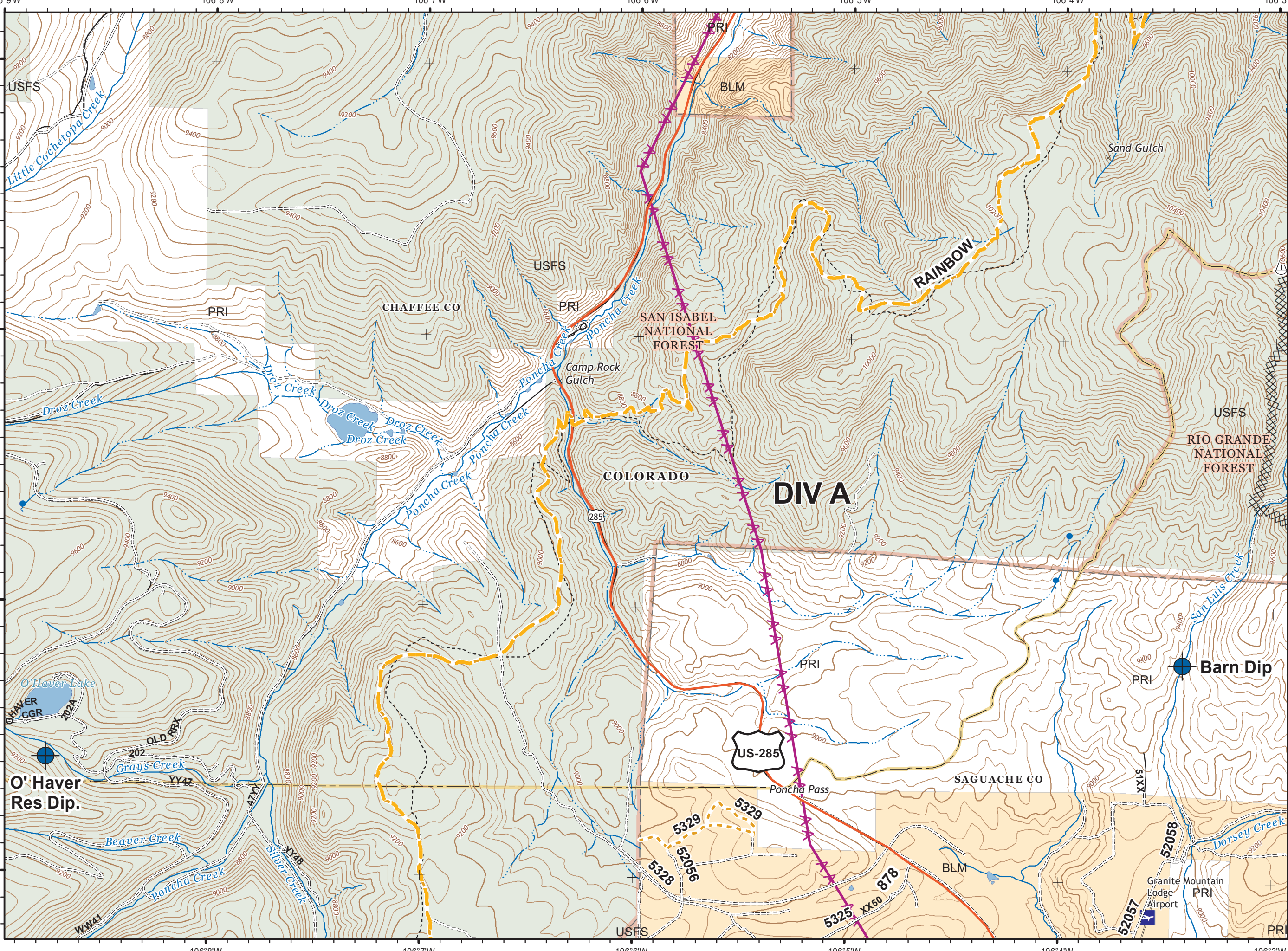
**Wellsville/Swissvale/Box  
 Canyon Zone**

**Bear  
 Creek  
 Zone**

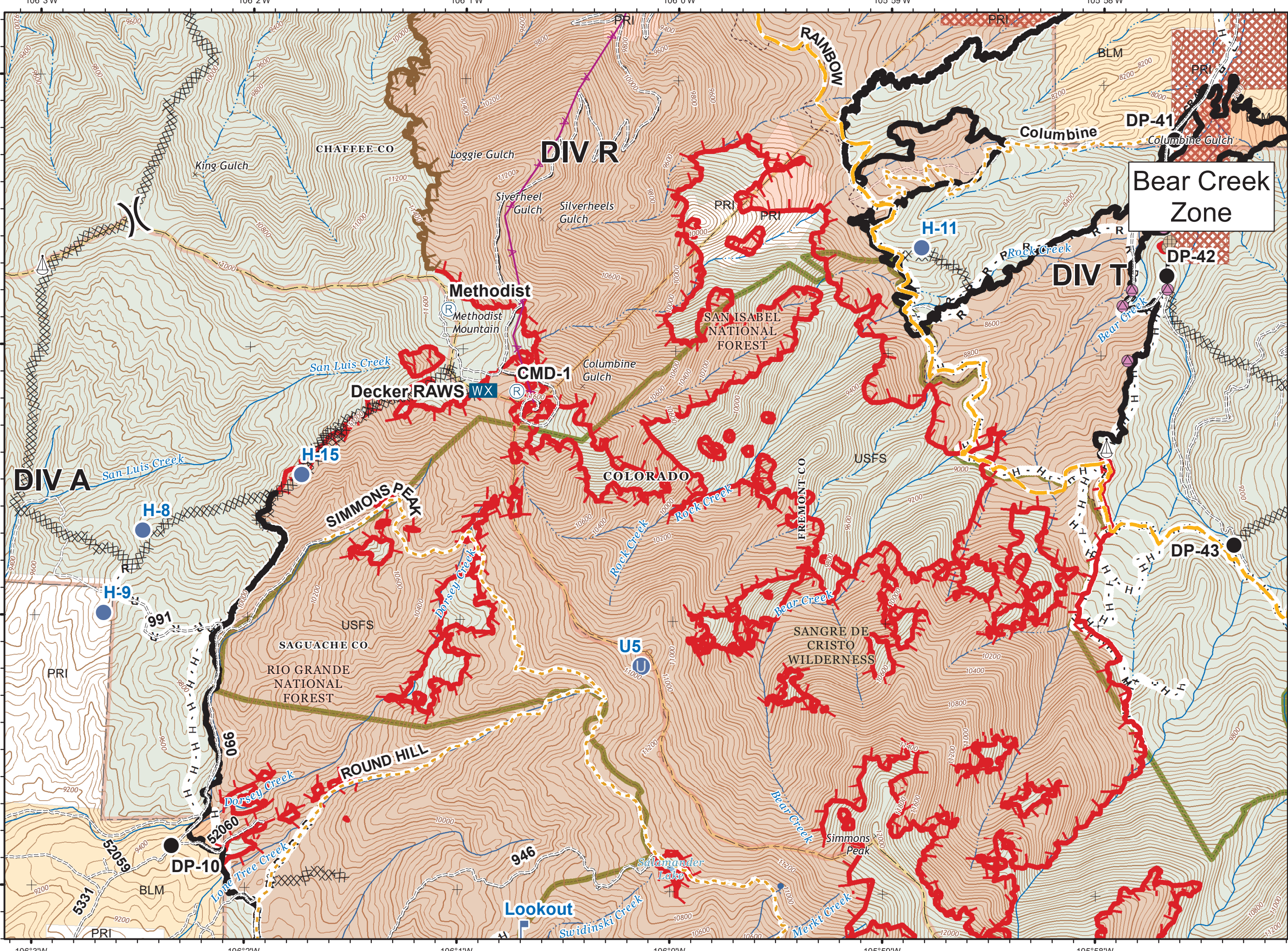
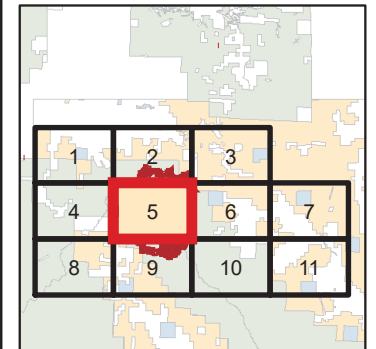
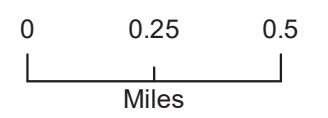




- Dip Site
- Sling Site
- Completed Dozer Line

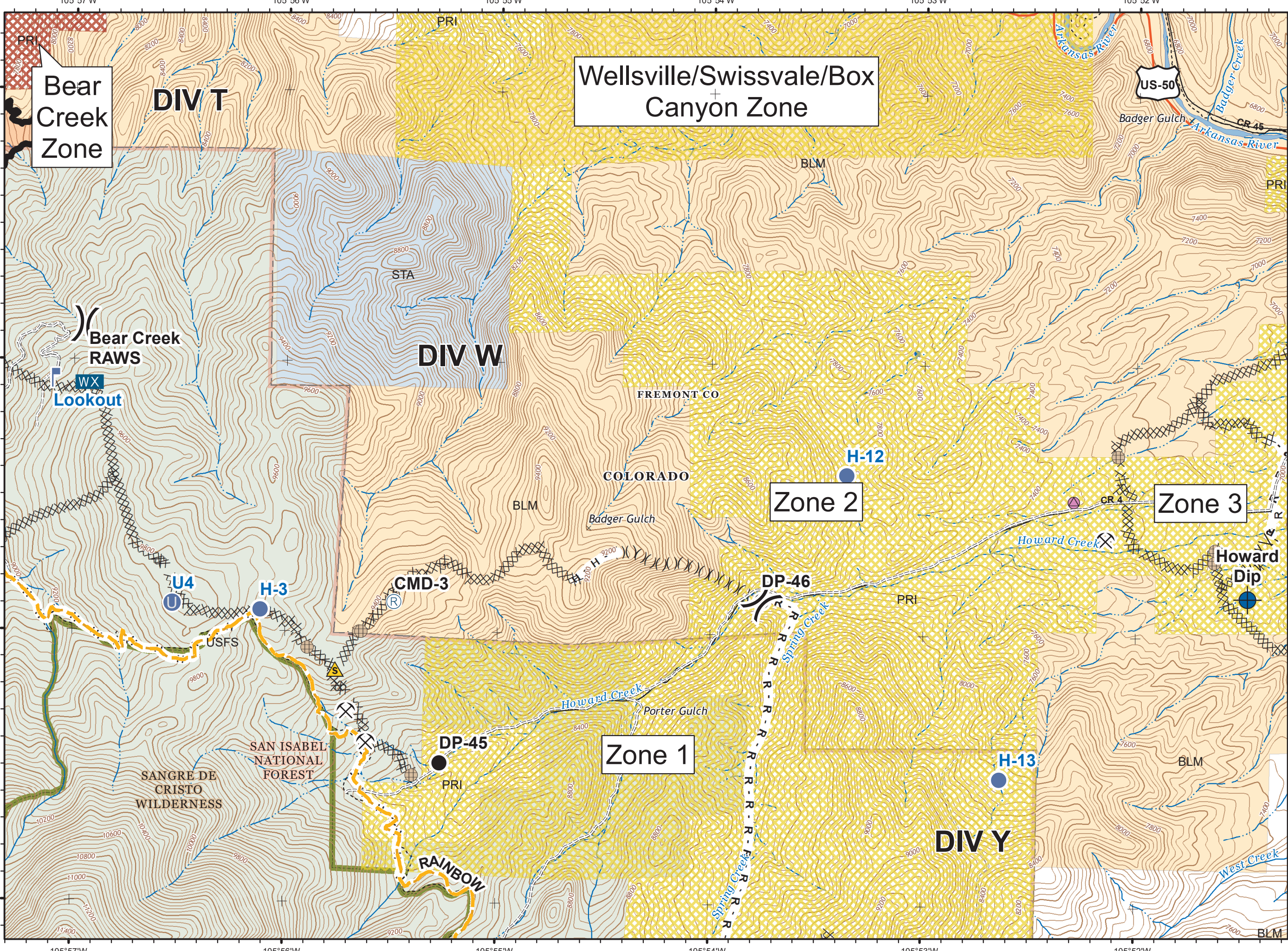
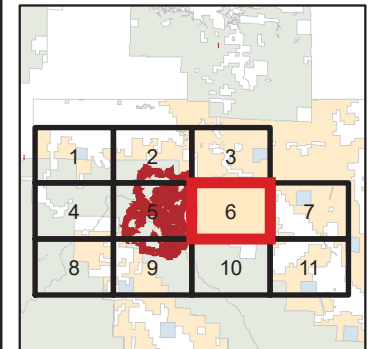
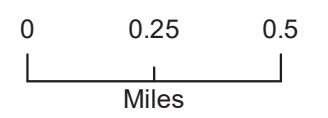






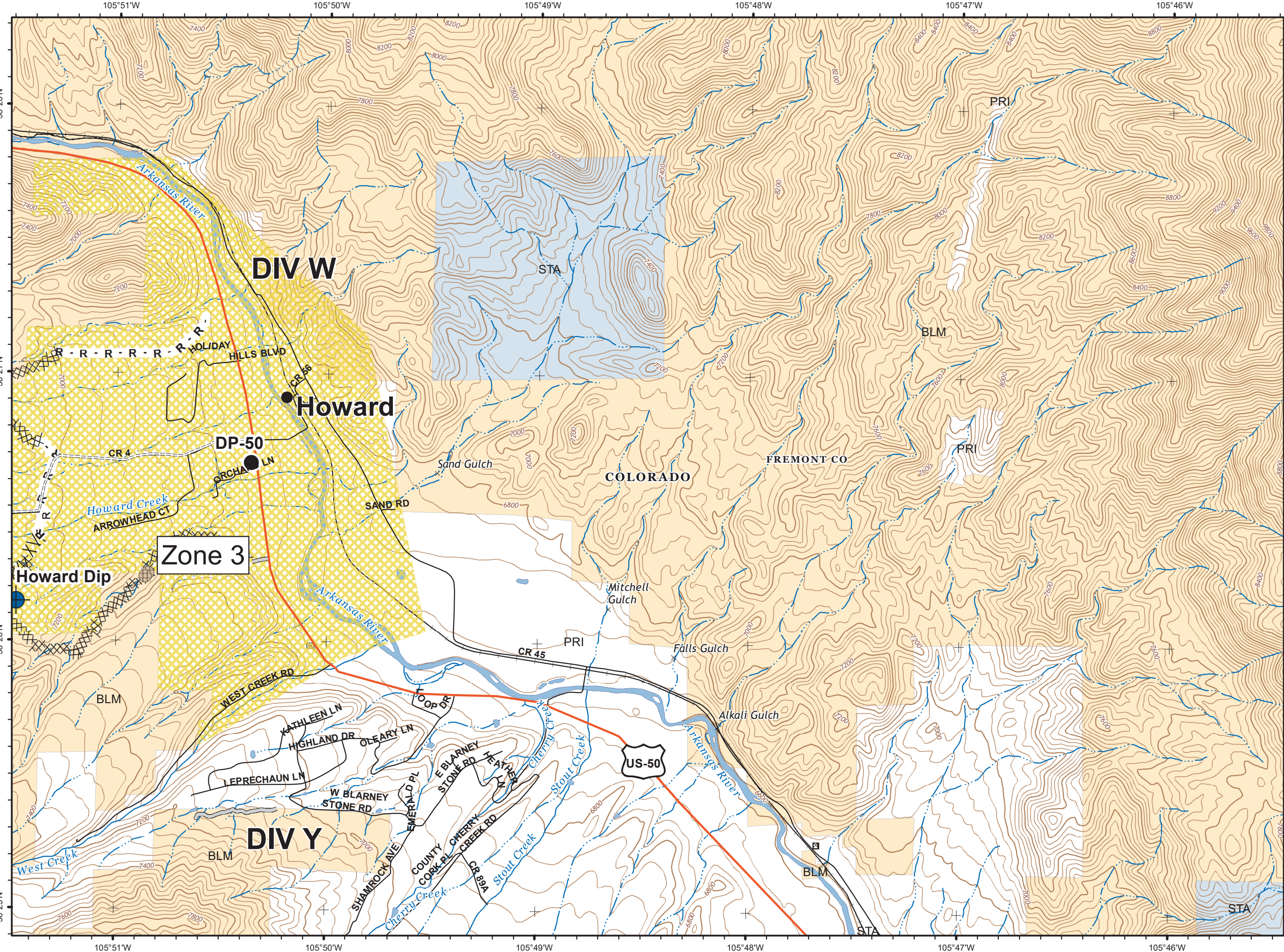
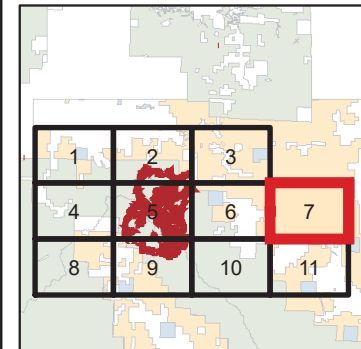
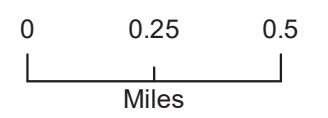
- Drop Point
  - Fence - Cut/Damaged
  - Unimproved Landing Area
  - Hellsport
  - Lookout
  - Mobile Weather Unit
  - Repair Point
  - Repeater
  - Sling Site
  - Value at Risk
  - Division Break
  - Completed Line
  - Completed Dozer Line
  - Completed Hand Line
  - Road as Completed Line
  - Limited Action Line - Minimal Threat
  - Uncontrolled Fire Edge
- Evacuation Type**
- Evacuated
  - Wilderness





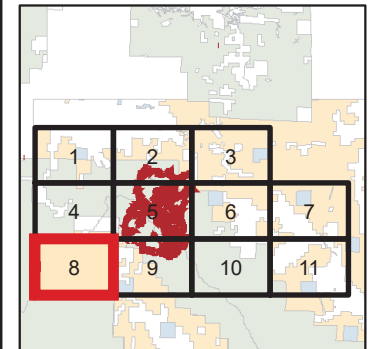
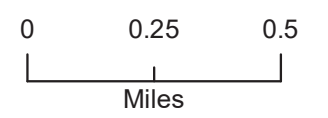
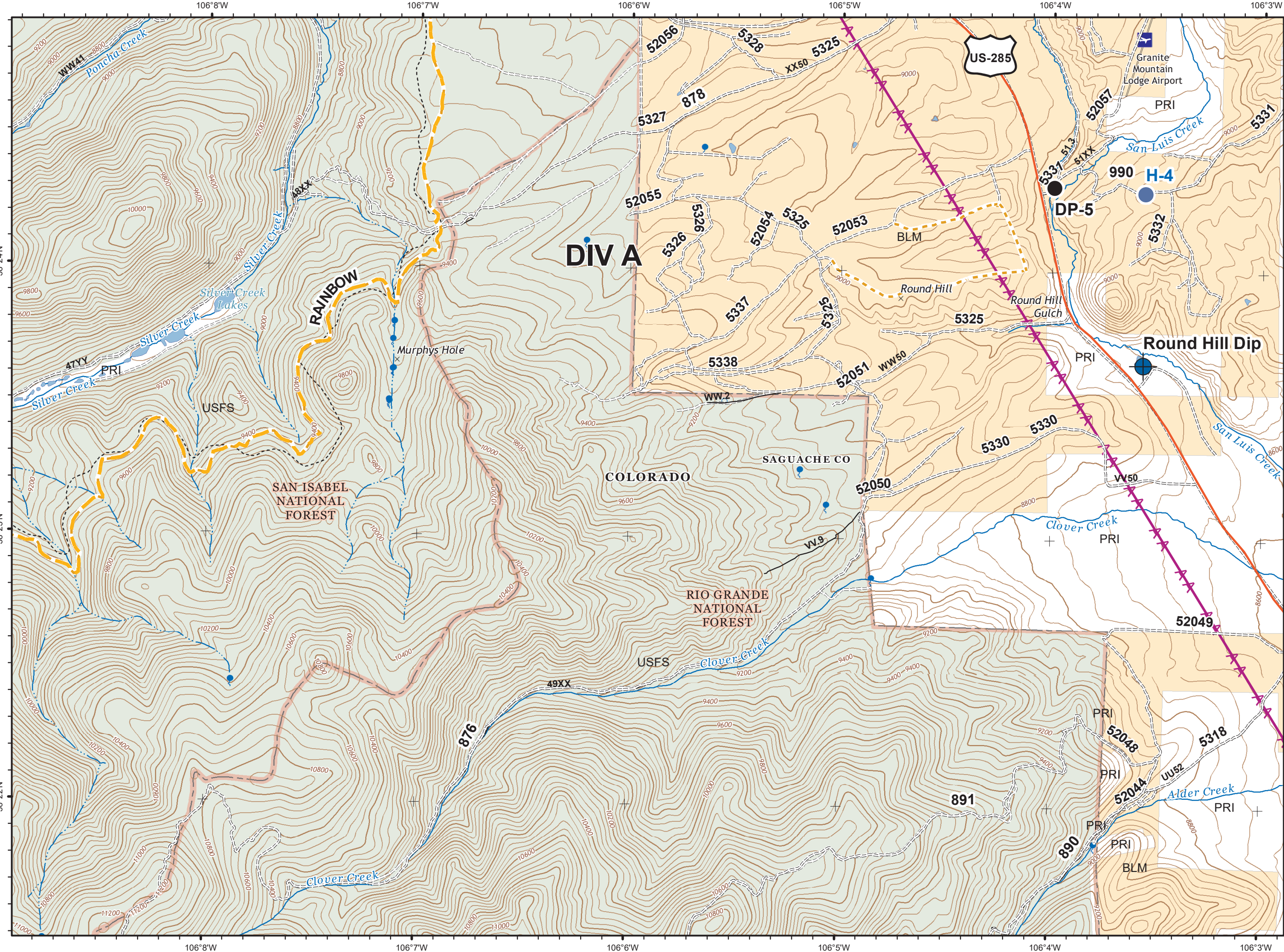
- |  |                         |  |                          |
|--|-------------------------|--|--------------------------|
|  | Dip Site                |  | Completed Line           |
|  | Drop Point              |  | Completed Dozer Line     |
|  | Fence - Cut/Damaged     |  | Completed Hand Line      |
|  | Unimproved Landing Area |  | Road as Completed Line   |
|  | Heliport                |  | Line Break Completed     |
|  | Mine Shaft              |  | Ridge/Geographic Feature |
|  | Lookout                 |  |                          |
|  | Mobile Weather Unit     |  |                          |
|  | Repair Point            |  | Evacuated                |
|  | Repeater                |  | Pre-Evacuated            |
|  | Safety Zone             |  | Wilderness               |
|  | Division Break          |  |                          |





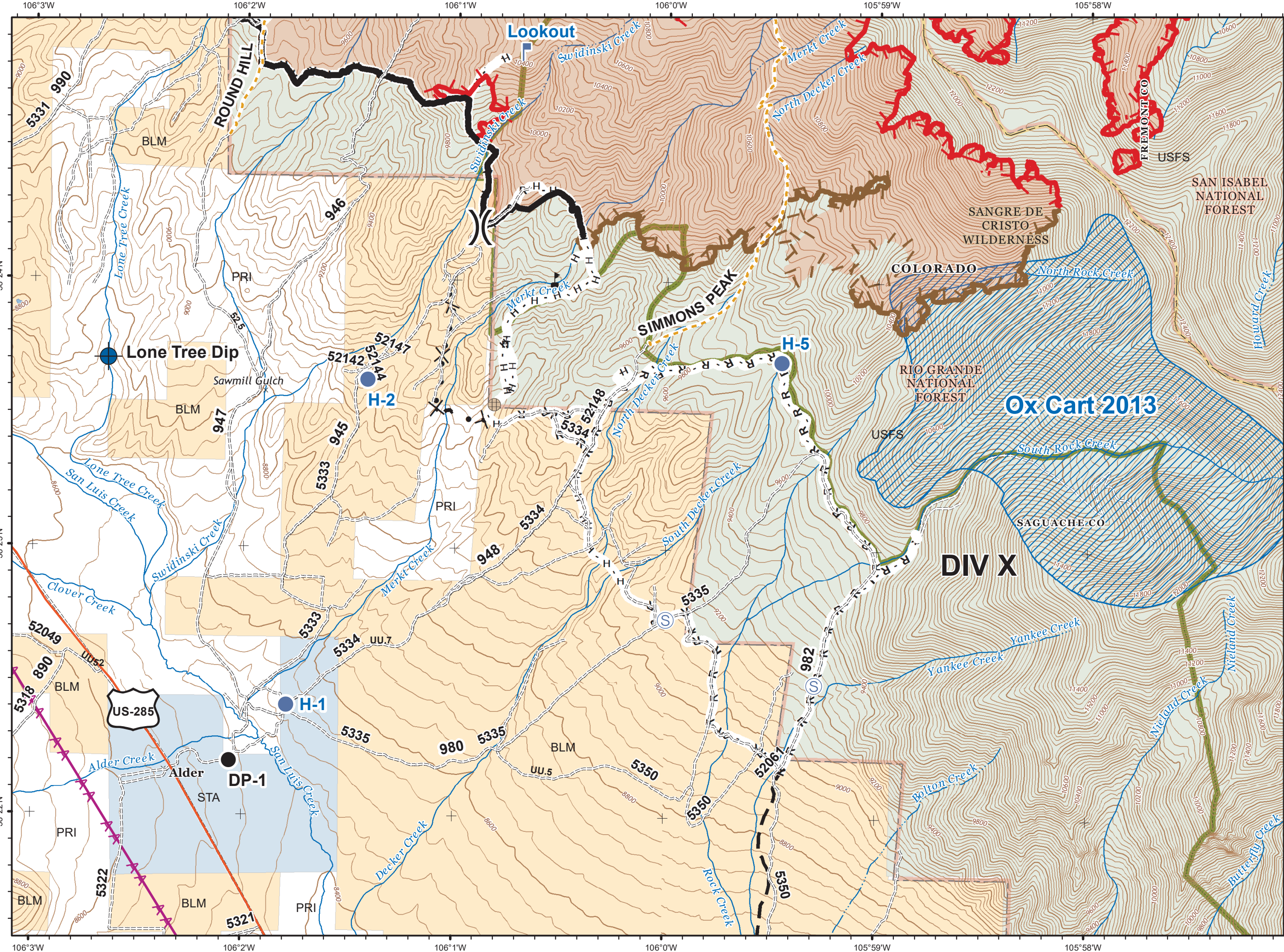
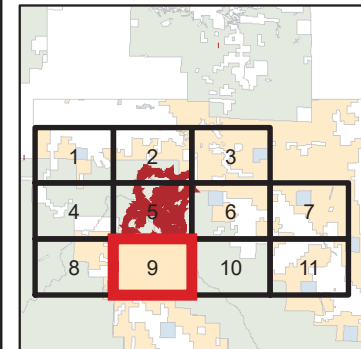
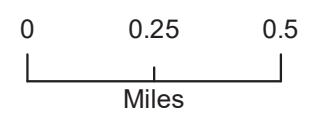
- Dip Site
- Drop Point
- Fence - Cut/Damaged
- Completed Dozer Line
- Road as Completed Line
- Access or Improved Road
- Line Break Completed
- Evacuation Type**
- Pre-Evacuated





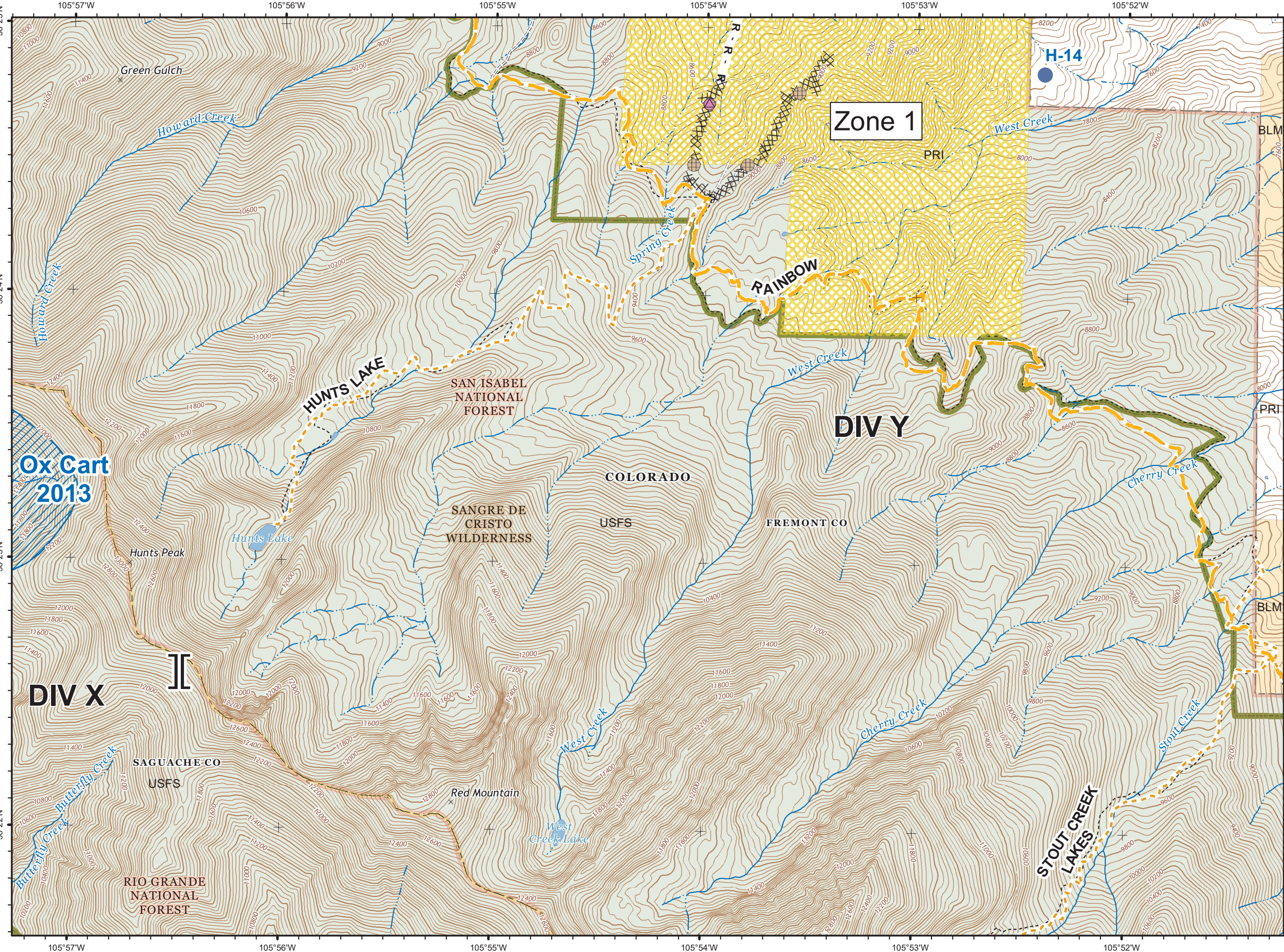
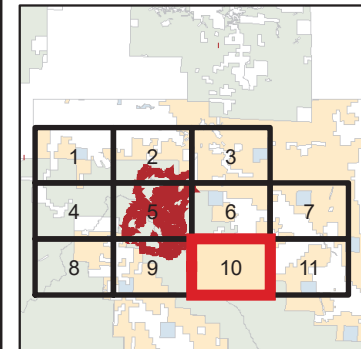
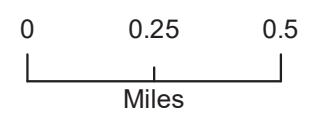
- Dip Site
- Drop Point
- Hellsport





- Dip Site
- Drop Point
- Fence - Cut/Damaged
- Hellsport
- Lookout
- Staging Area
- Value at Risk
- Division Break
- Completed Line
- Completed Hand Line
- Road as Completed Line
- Limited Action Line - Minimal Threat
- Uncontrolled Fire Edge
- Proposed Dozer Line
- Planned Fire Line
- Wildfires within 10 years
- Wilderness





- Fence - Cut/Damaged
- Hellsport
- Repair Point
- Branch Break
- Completed Dozer Line
- R - Road as Completed Line
- Wildfires within 10 years
- Evacuation Type**
- Pre-Evacuated
- Wilderness



