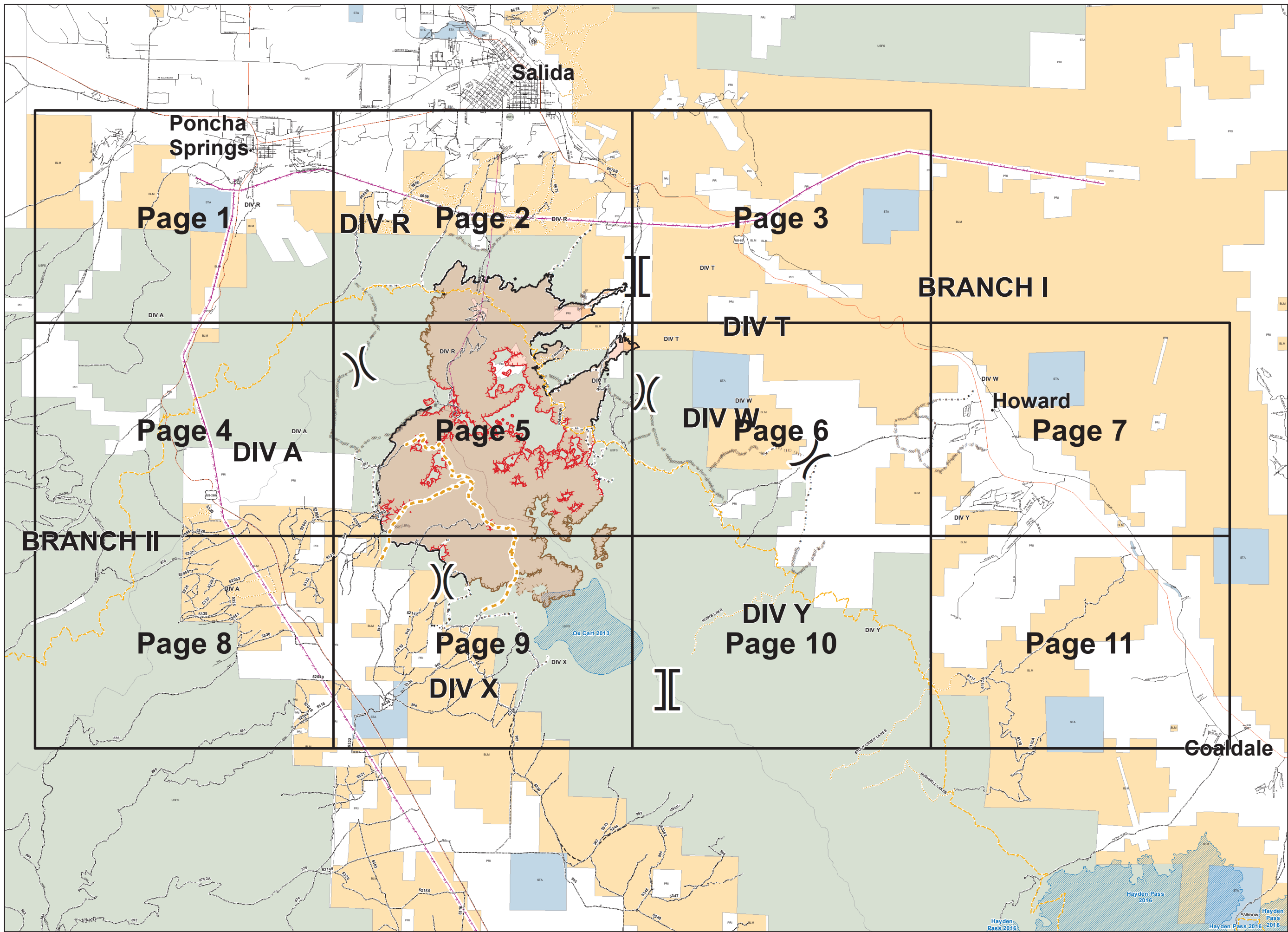
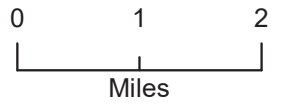
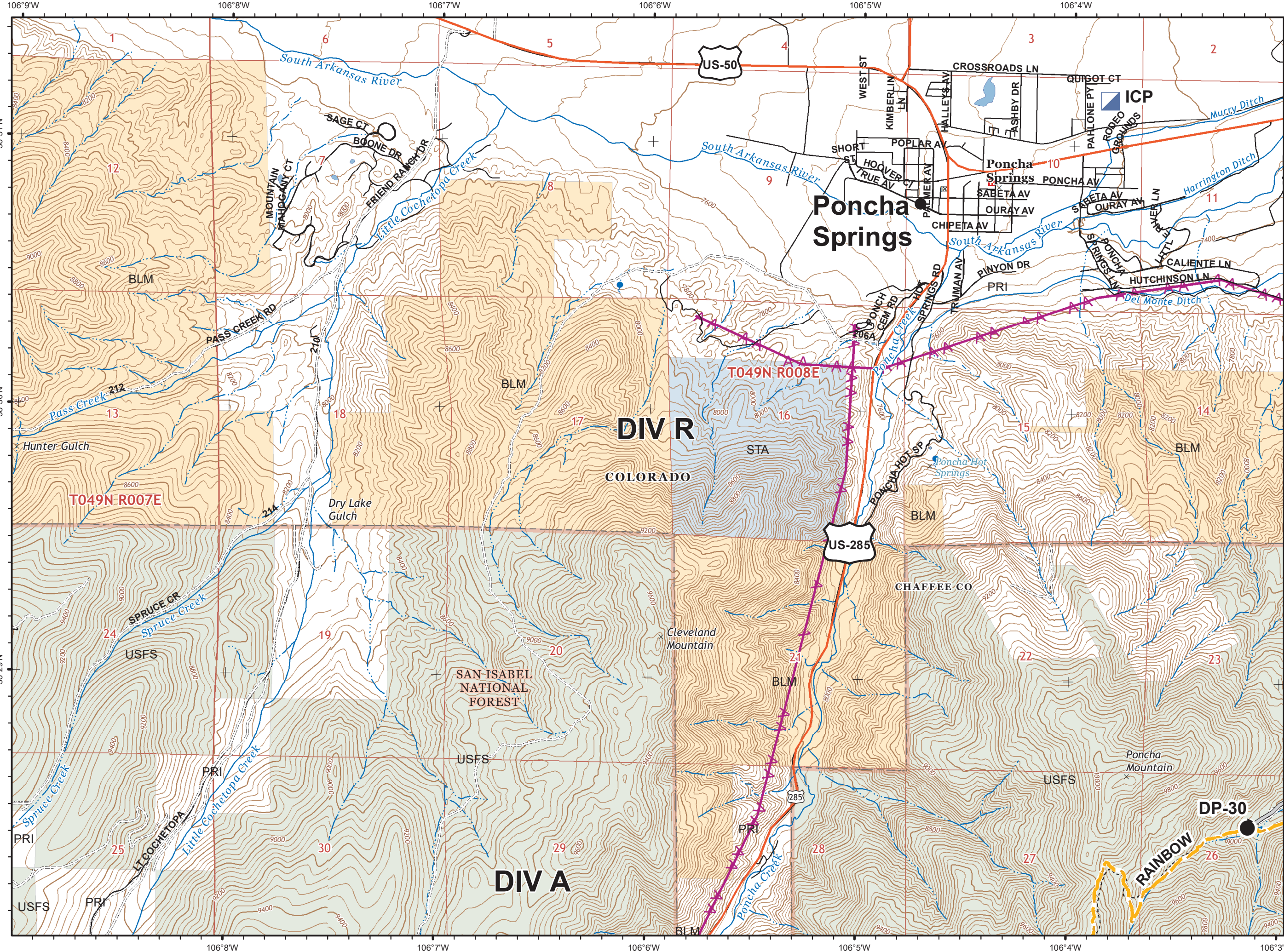


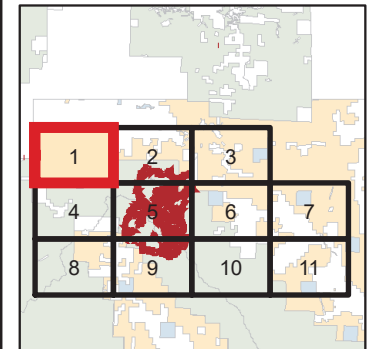
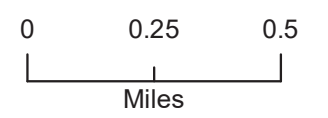
IAP Index
 Decker Fire
 CO_RGF-1388
 10/22/2019
 8,723 Acres



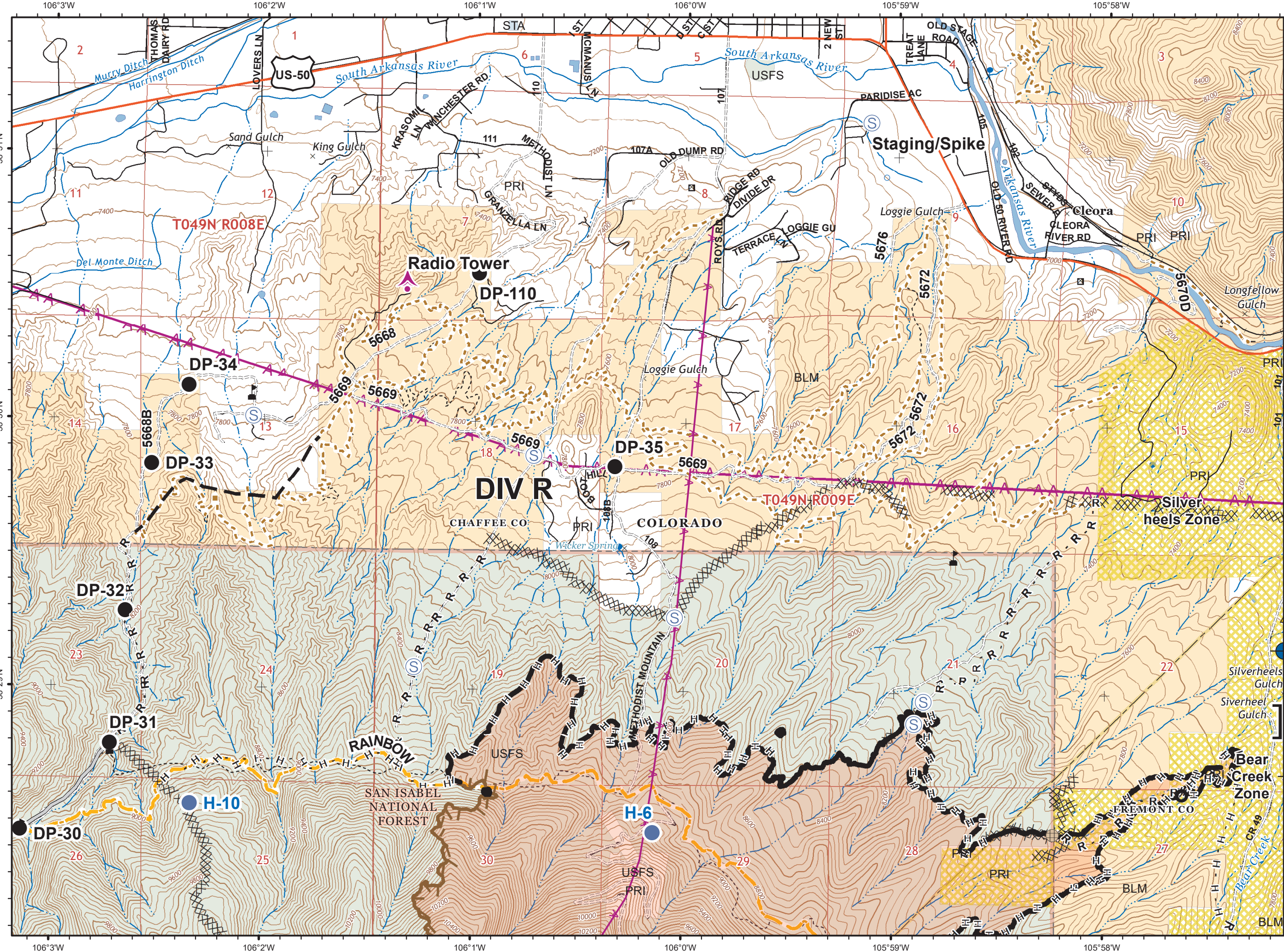
- () Division Break
- [] Branch Break
- Completed Line
- XXXXX Completed Dozer Line
- H - H - Completed Hand Line
- R - R - Road as Completed Line
- Limited Action Line - Minimal Threat
- Uncontrolled Fire Edge
- Access or Improved Road
- ~ Line Break Completed
- ⊗ Proposed Dozer Line
- Planned Fire Line
- ()() Ridge/Geographic Feature
- ▨ Wildfires within 10 years
- OWNER**
- BLM
- PRI
- STA
- USFS



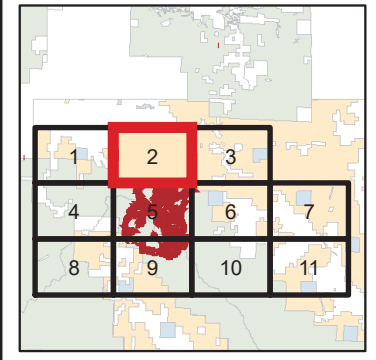
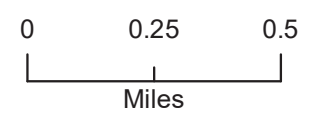
IAP
 Decker Fire
 CO_RGF-1388
 10/22/2019
 8,723 Acres
Page 1



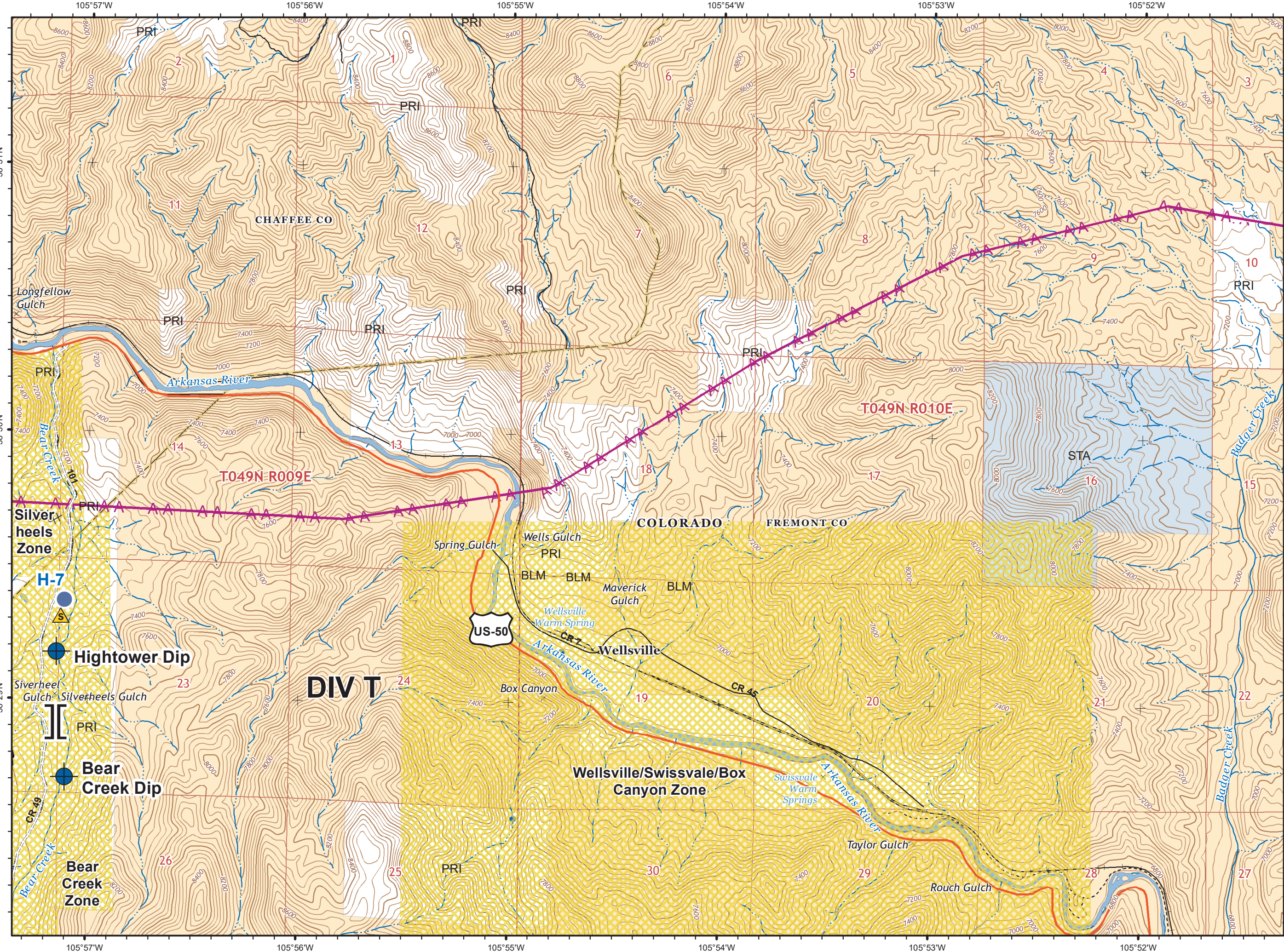
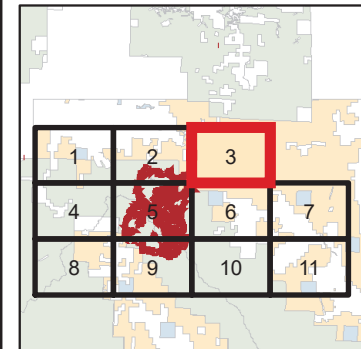
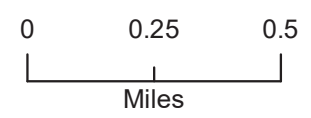
- Drop Point
- Incident Command Post
- Value at Risk
- Access or Improved Road



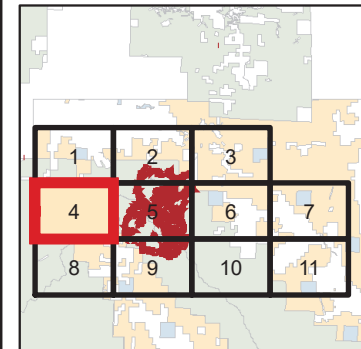
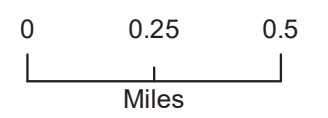
IAP
 Decker Fire
 CO_RGF-1388
 10/22/2019
 8,723 Acres
Page 2



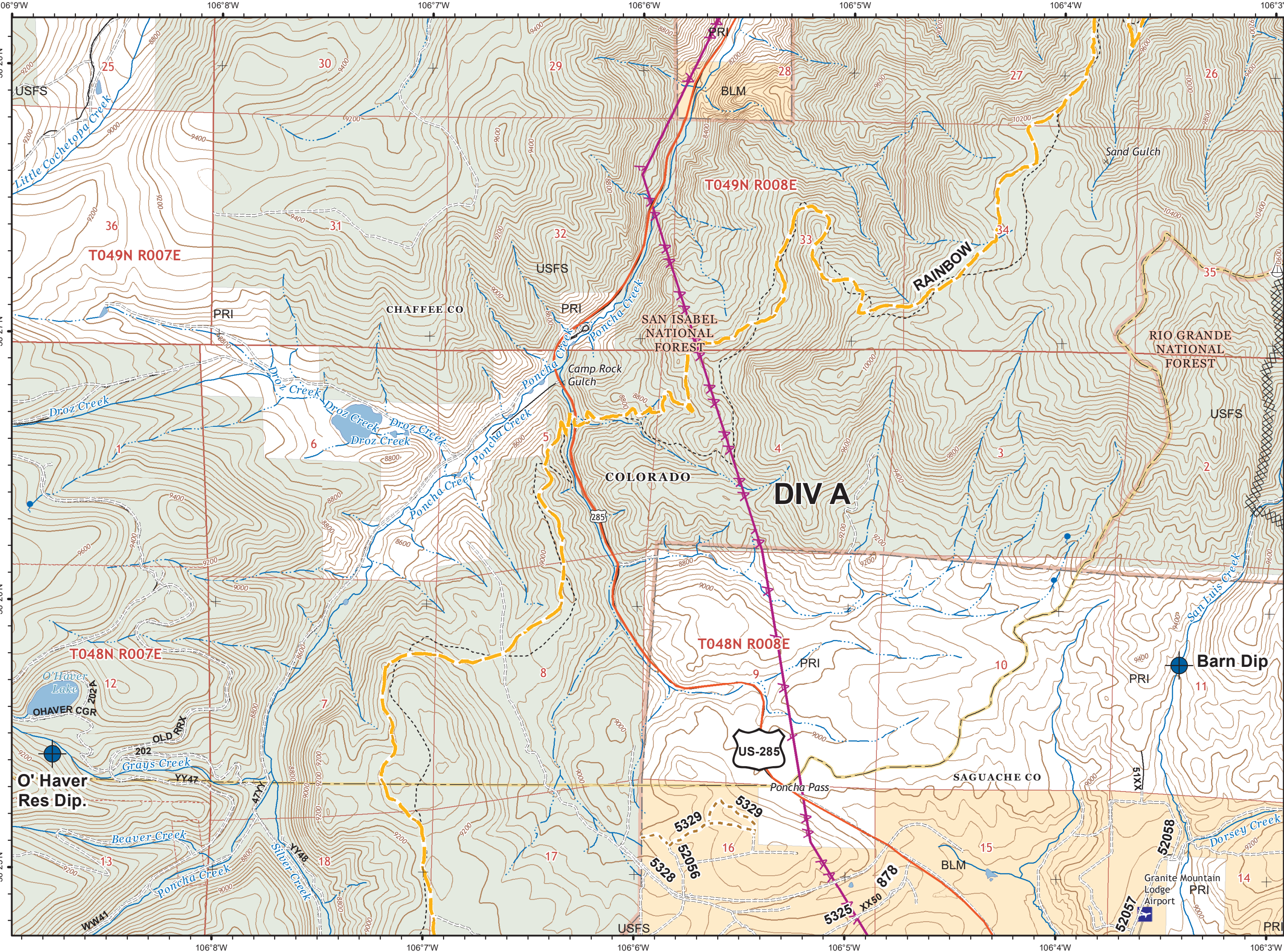
- Aerial Hazard
- Culvert
- Dip Site
- Drop Point
- Fence - Cut/Damaged
- Helispot
- Safety Zone
- Staging Area
- Value at Risk
- Branch Break
- Completed Line
- Completed Dozer Line
- Completed Hand Line
- Road as Completed Line
- Limited Action Line - Minimal Threat
- Access or Improved Road
- Planned Fire Line
- Evacuation Type**
- Pre-Evacuated

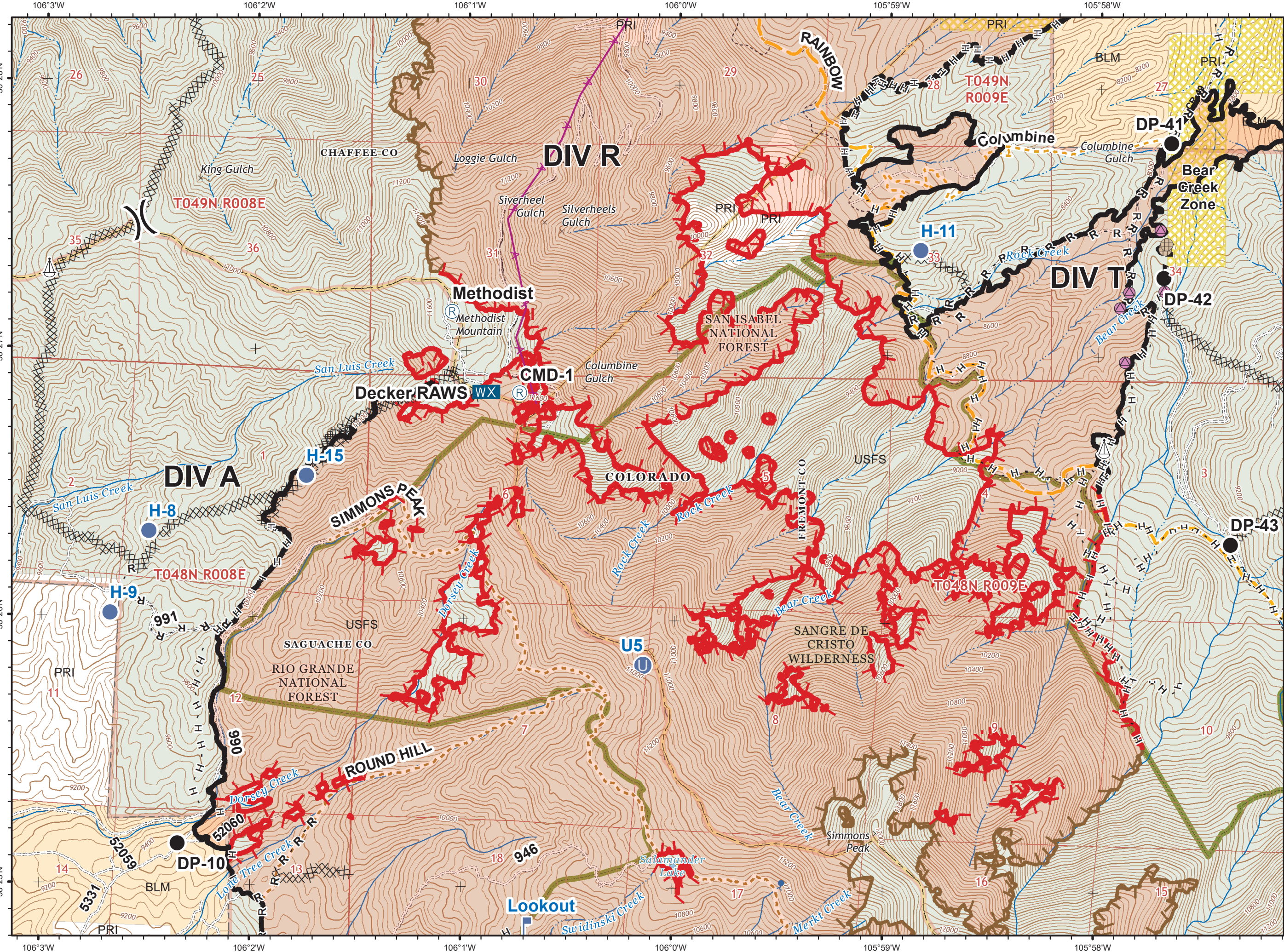
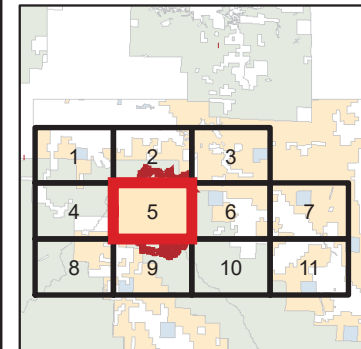
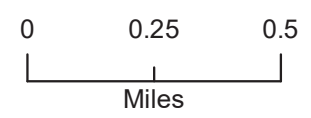


- Dip Site
- Heliport
- Safety Zone
- Branch Break
- Completed Line
- Completed Dozer Line
- Completed Hand Line
- Evacuation Type: Pre-Evacuated

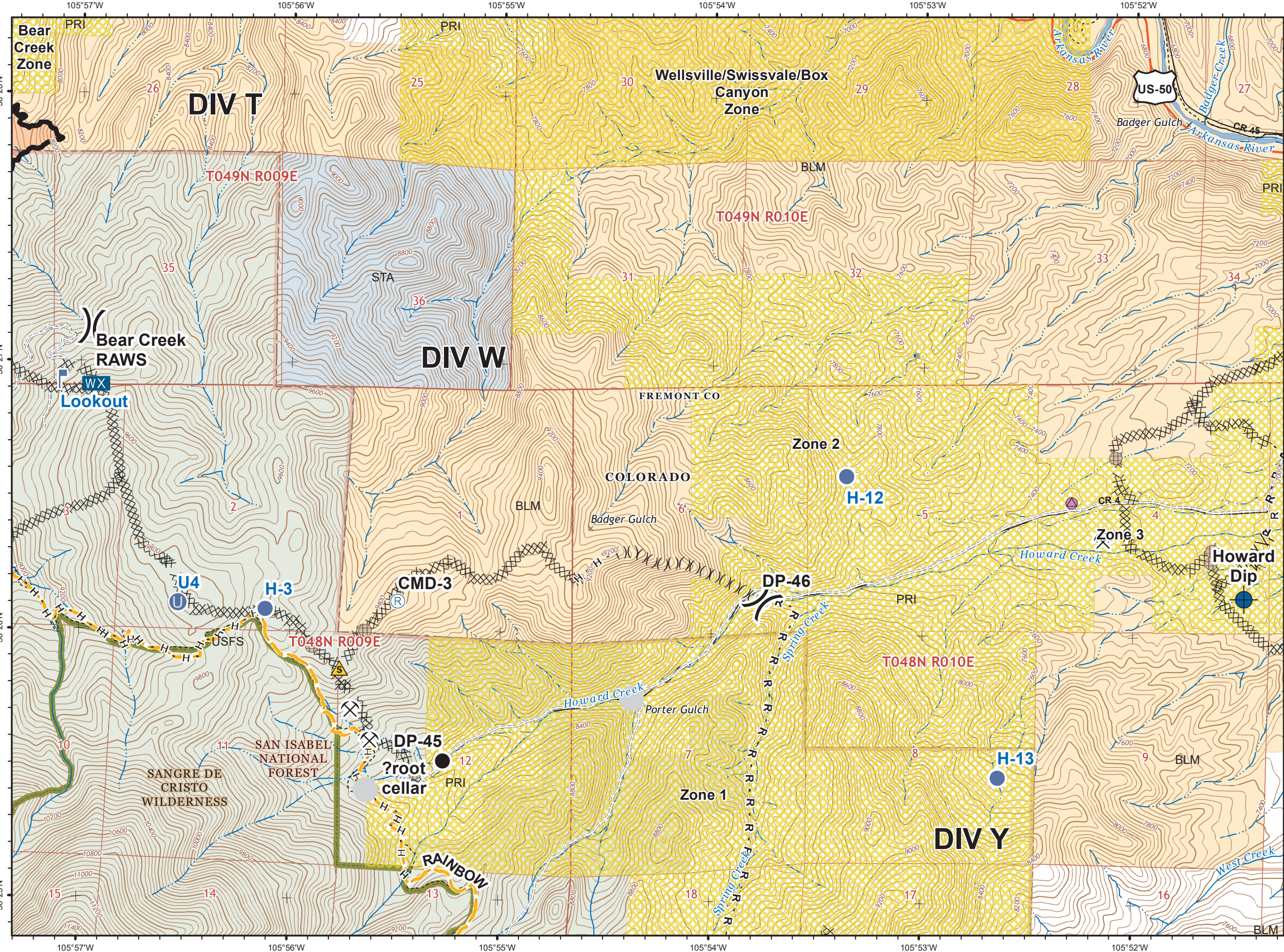
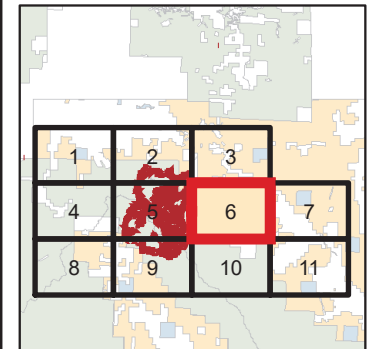
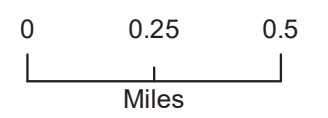


- Dip Site
- Sling Site
- Completed Dozer Line

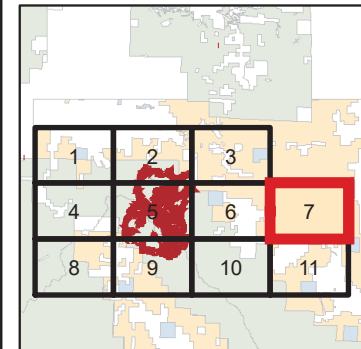
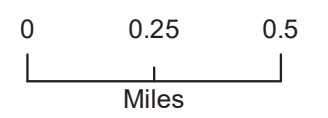




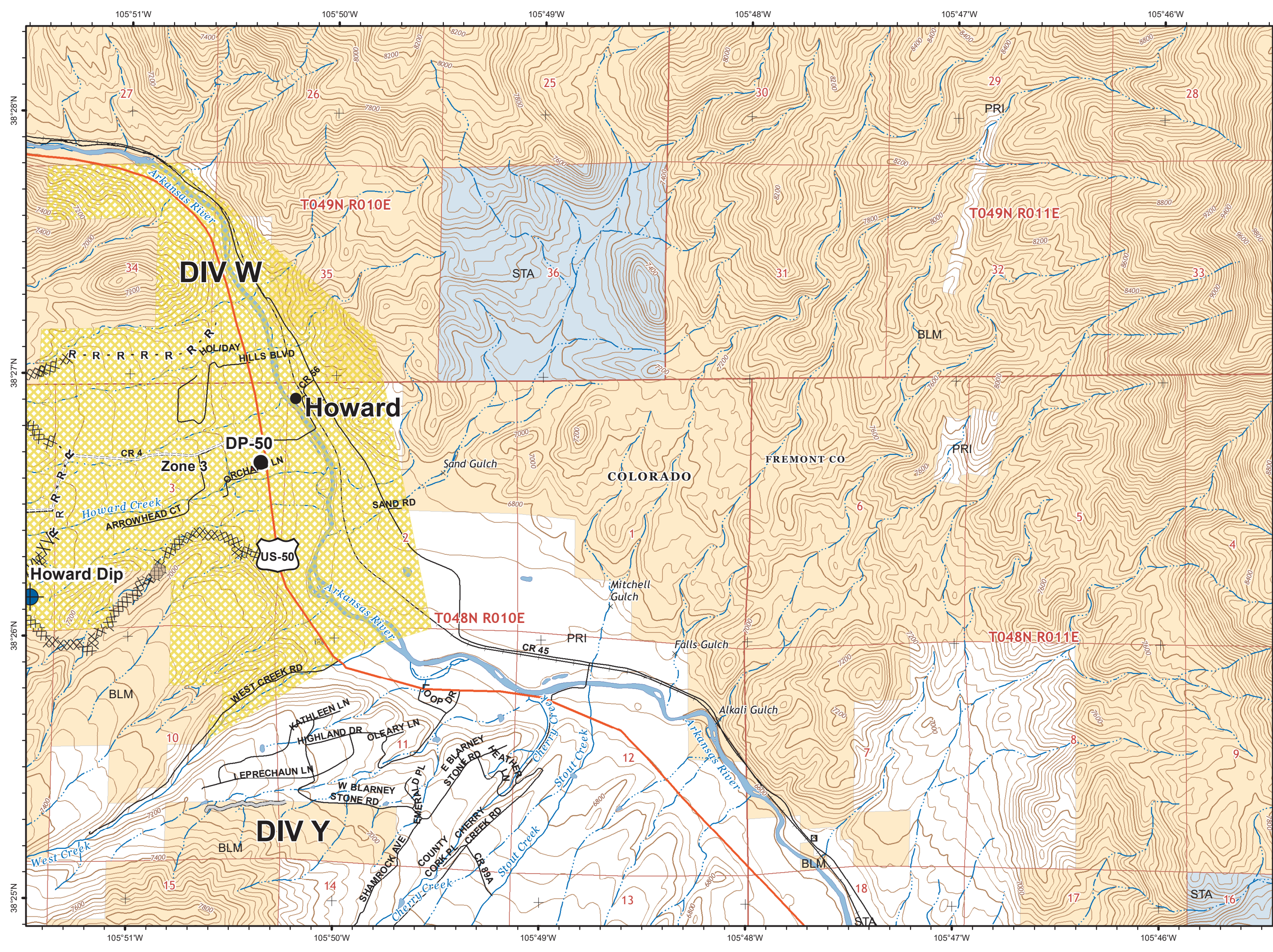
- Drop Point
 - Fence - Cut/Damaged
 - Unimproved Landing Area
 - Hellsport
 - Lookout
 - Mobile Weather Unit
 - Repair Point
 - Repeater
 - Sling Site
 - Value at Risk
 - Division Break
 - Completed Line
 - Completed Dozer Line
 - Completed Hand Line
 - Road as Completed Line
 - Limited Action Line - Minimal Threat
 - Uncontrolled Fire Edge
- Evacuation Type**
- Pre-Evacuated
 - Wilderness

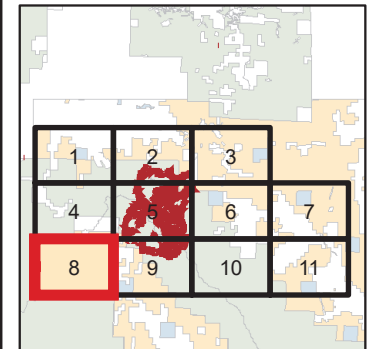
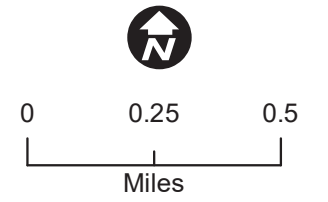
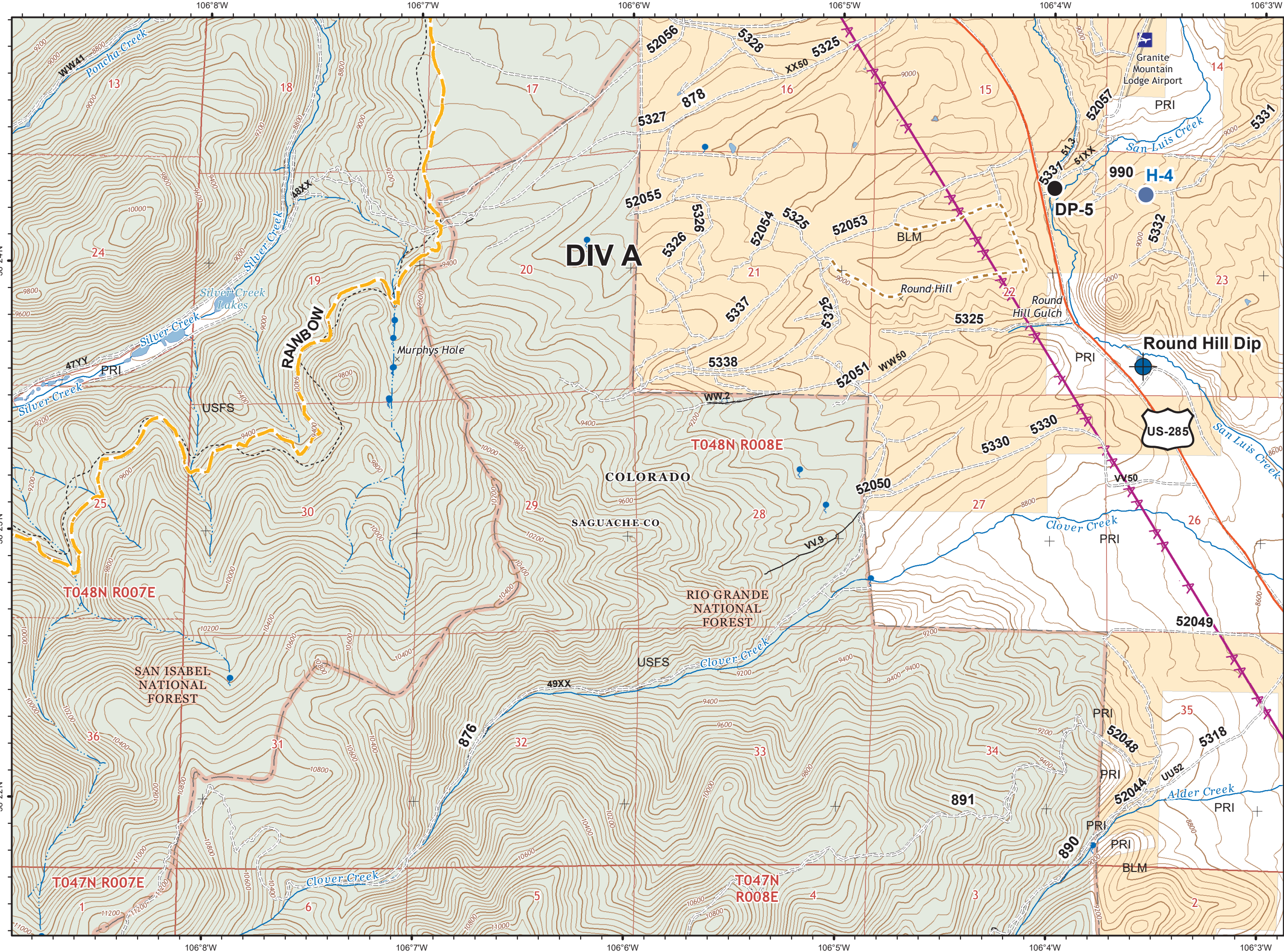


- Dip Site
- Drop Point
- Fence - Cut/Damaged
- Hazard
- Unimproved Landing Area
- Heliport
- Mine Shaft
- Lookout
- Mobile Weather Unit
- Repair Point
- Repeater
- Safety Zone
- Other
- Division Break
- Completed Line
- Completed Dozer Line
- Completed Hand Line
- Road as Completed Line
- Line Break Completed
- Ridge/Geographic Feature
- Pre-Evacuated
- Wilderness

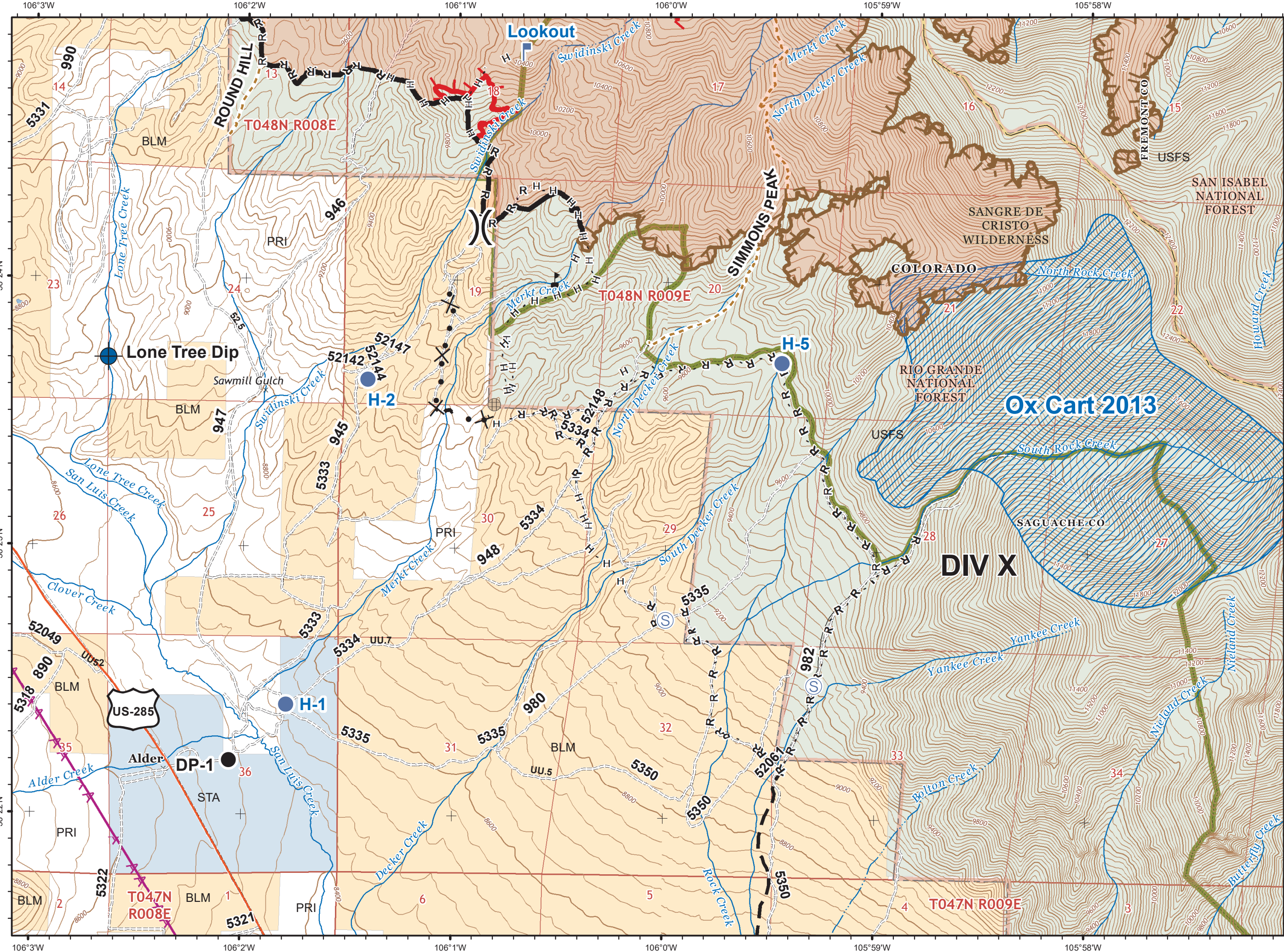
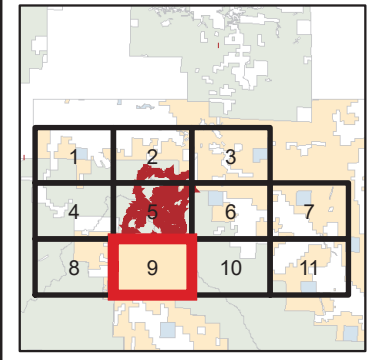
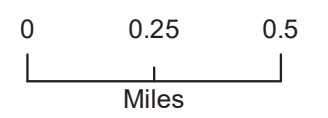


- Dip Site
- Drop Point
- Fence - Cut/Damaged
- Completed Dozer Line
- Road as Completed Line
- Access or Improved Road
- Line Break Completed
- Evacuation Type**
- Pre-Evacuated

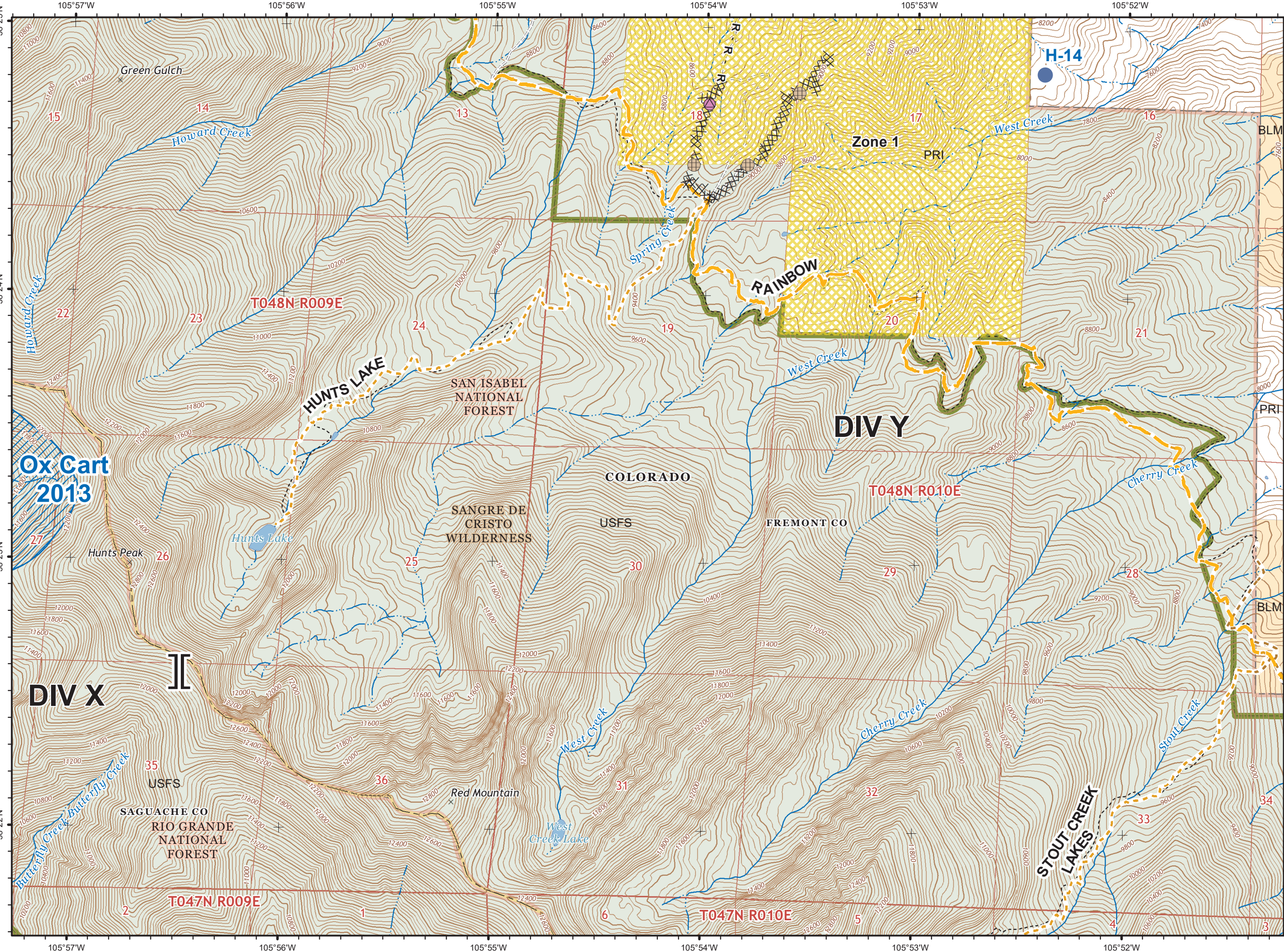
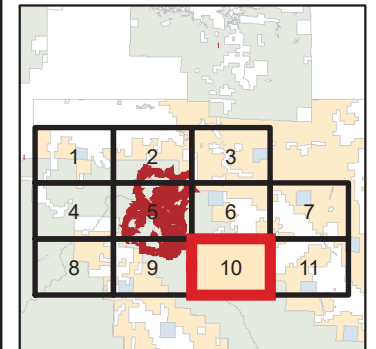
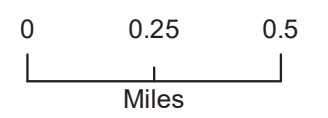




- Dip Site
- Drop Point
- Hellsport



- Dip Site
- Drop Point
- Fence - Cut/Damaged
- Hellsport
- Lookout
- Staging Area
- Value at Risk
- Division Break
- Completed Line
- Completed Hand Line
- Road as Completed Line
- Limited Action Line - Minimal Threat
- Uncontrolled Fire Edge
- Proposed Dozer Line
- Planned Fire Line
- Wildfires within 10 years
- Wilderness



- Fence - Cut/Damaged
- Hellsport
- Repair Point
- Branch Break
- Completed Dozer Line
- R - Road as Completed Line
- Wildfires within 10 years
- Evacuation Type**
- Pre-Evacuated
- Wilderness

