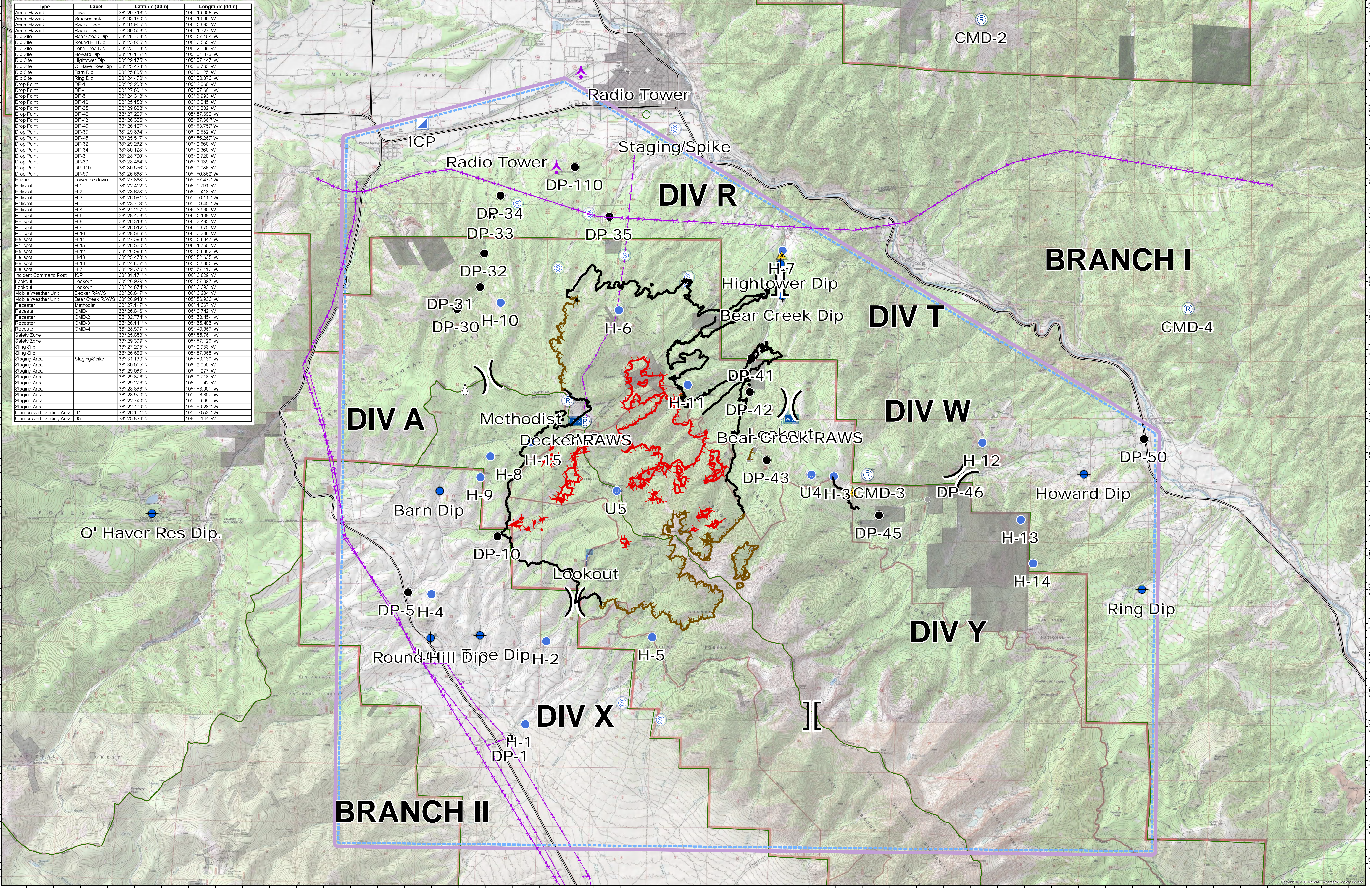


Type	Label	Latitude (ddm)	Longitude (ddm)
Aerial Hazard	Tower	38 29 713 N	106 19 008 W
Aerial Hazard	Smokestack	38 33 180 N	106 1 638 W
Aerial Hazard	Radio Tower	38 31 505 N	106 0 853 W
Aerial Hazard	Radio Tower	38 30 503 N	106 1 327 W
Dip Site	Bear Creek Dip	38 28 708 N	105 57 104 W
Dip Site	Round Hill Dip	38 23 655 N	106 3 555 W
Dip Site	Lone Tree Dip	38 23 703 N	106 2 649 W
Dip Site	Howard Dip	38 26 147 N	105 51 473 W
Dip Site	Hightower Dip	38 29 175 N	105 57 147 W
Dip Site	O' Haver Res Dip	38 25 424 N	106 8 783 W
Dip Site	Barn Dip	38 26 805 N	106 1 425 W
Dip Site	Ring Dip	38 24 470 N	105 50 376 W
Drop Point	DP-1	38 22 203 N	106 2 060 W
Drop Point	DP-41	38 27 801 N	105 57 681 W
Drop Point	DP-2	38 24 316 N	106 3 853 W
Drop Point	DP-10	38 25 153 N	106 2 345 W
Drop Point	DP-35	38 29 638 N	106 0 332 W
Drop Point	DP-42	38 27 299 N	105 57 692 W
Drop Point	DP-43	38 26 805 N	105 57 356 W
Drop Point	DP-46	38 26 127 N	105 53 757 W
Drop Point	DP-33	38 29 634 N	106 2 532 W
Drop Point	DP-45	38 25 511 N	105 55 267 W
Drop Point	DP-32	38 29 292 N	106 2 697 W
Drop Point	DP-34	38 30 126 N	106 2 360 W
Drop Point	DP-31	38 28 790 N	106 2 720 W
Drop Point	DP-30	38 28 464 N	106 3 138 W
Drop Point	DP-110	38 30 556 N	106 0 988 W
Drop Point	DP-50	38 26 668 N	105 50 382 W
Hazard	powerline down	38 27 868 N	105 57 477 W
Helispot	H-1	38 22 412 N	106 1 731 W
Helispot	H-2	38 23 626 N	106 1 418 W
Helispot	H-3	38 26 081 N	105 56 115 W
Helispot	H-5	38 23 703 N	105 59 455 W
Helispot	H-4	38 24 291 N	106 3 658 W
Helispot	H-6	38 28 473 N	106 0 138 W
Helispot	H-8	38 26 318 N	106 2 495 W
Helispot	H-9	38 26 012 N	106 2 575 W
Helispot	H-10	38 26 358 N	106 1 238 W
Helispot	H-11	38 27 334 N	105 58 847 W
Helispot	H-15	38 26 530 N	106 1 750 W
Helispot	H-12	38 26 358 N	105 53 362 W
Helispot	H-13	38 25 473 N	105 52 635 W
Helispot	H-14	38 24 837 N	105 52 400 W
Helispot	H-7	38 29 370 N	105 57 110 W
Incident Command Post	ICP	38 31 171 N	106 3 829 W
Lookout	Lookout	38 26 920 N	105 57 097 W
Lookout	Lookout	38 24 854 N	106 0 693 W
Mobile Weather Unit	Decker RAWS	38 26 847 N	106 0 904 W
Mobile Weather Unit	Bear Creek RAWS	38 28 913 N	105 56 330 W
Repeater	Methodist	38 27 147 N	106 1 057 W
Repeater	CMD-1	38 26 646 N	106 0 742 W
Repeater	CMD-2	38 32 774 N	105 53 454 W
Repeater	CMD-3	38 26 111 N	105 58 885 W
Repeater	CMD-4	38 26 577 N	105 49 567 W
Safety Zone	Safety Zone	38 25 858 N	105 55 781 W
Safety Zone	Safety Zone	38 29 309 N	105 57 126 W
Sing Site	Sing Site	38 27 299 N	106 2 883 W
Sing Site	Sing Site	38 26 660 N	105 57 968 W
Staging Area	Staging/Spike	38 31 130 N	105 59 130 W
Staging Area	Staging Area	38 30 015 N	106 2 050 W
Staging Area	Staging Area	38 29 053 N	106 1 277 W
Staging Area	Staging Area	38 29 876 N	106 0 719 W
Staging Area	Staging Area	38 29 278 N	106 0 042 W
Staging Area	Staging Area	38 28 869 N	105 58 501 W
Staging Area	Staging Area	38 29 970 N	105 58 657 W
Staging Area	Staging Area	38 27 740 N	105 59 995 W
Staging Area	Staging Area	38 22 499 N	105 59 289 W
Unimproved Landing Area	U4	38 26 101 N	105 56 530 W
Unimproved Landing Area	U5	38 25 834 N	106 0 144 W



AIR OPERATIONS
Air Operations
 Decker Fire
 CO-RGF-1388
 10/24/2019
 8,910 Acres

- Completed Line
- Limited Action Line - Minimal Threat
- Uncontrolled Fire Edge
- Transmission Lines
- TFR 9/0424
- Aerial Hazard
- Dip Site
- Drop Point
- Unimproved Landing Area
- Helispot
- Hot Spot
- Incident Command Post
- Lookout
- Mobile Weather Unit
- Repeater
- Safety Zone
- Staging Area
- Other
- Division Break
- Branch Break
- Datum: NAD 1983 UTM Zone 13N
Created by: Spunet
Created Date: 10/23/2019

