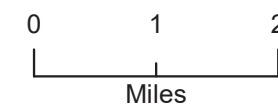
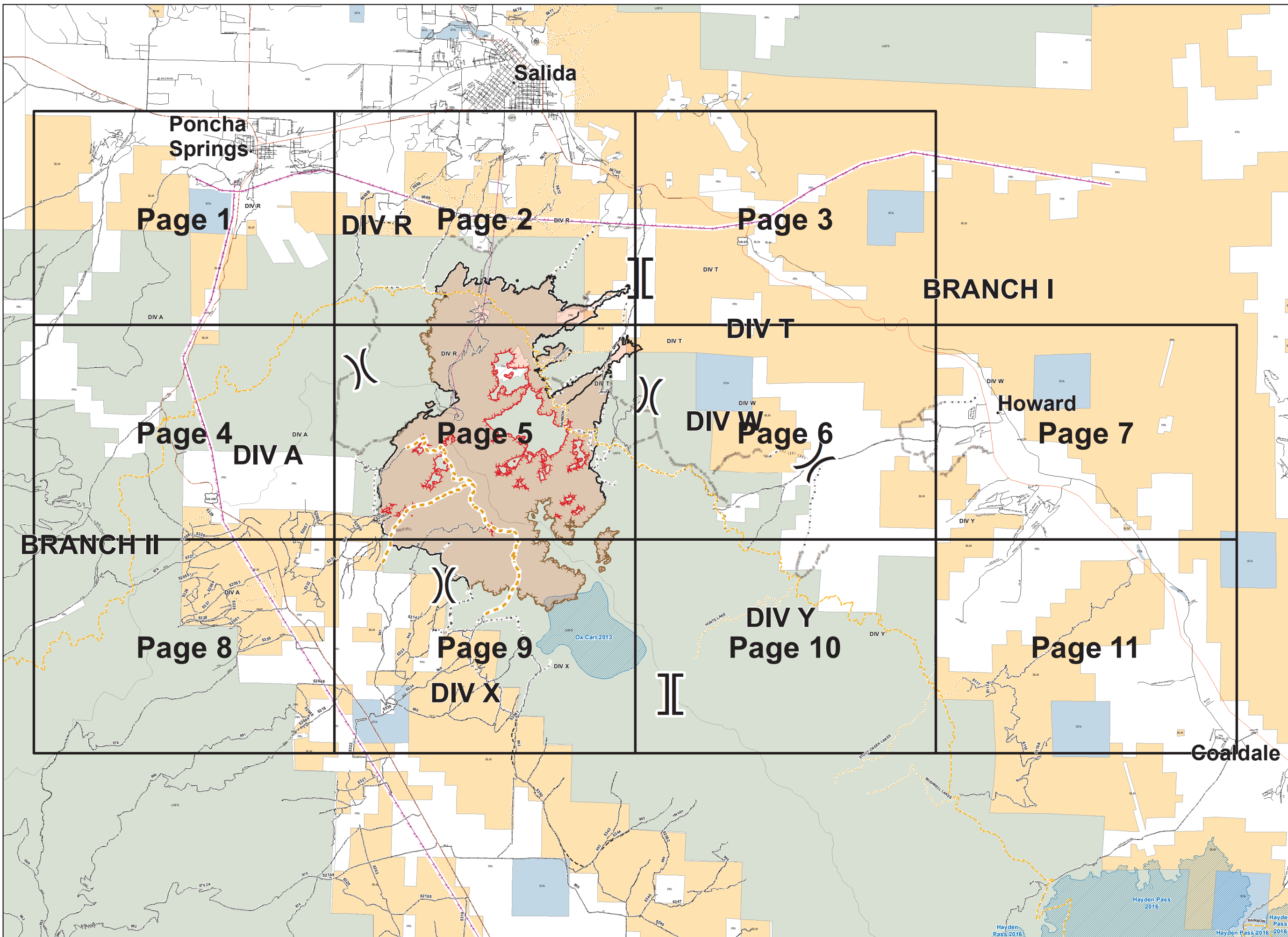
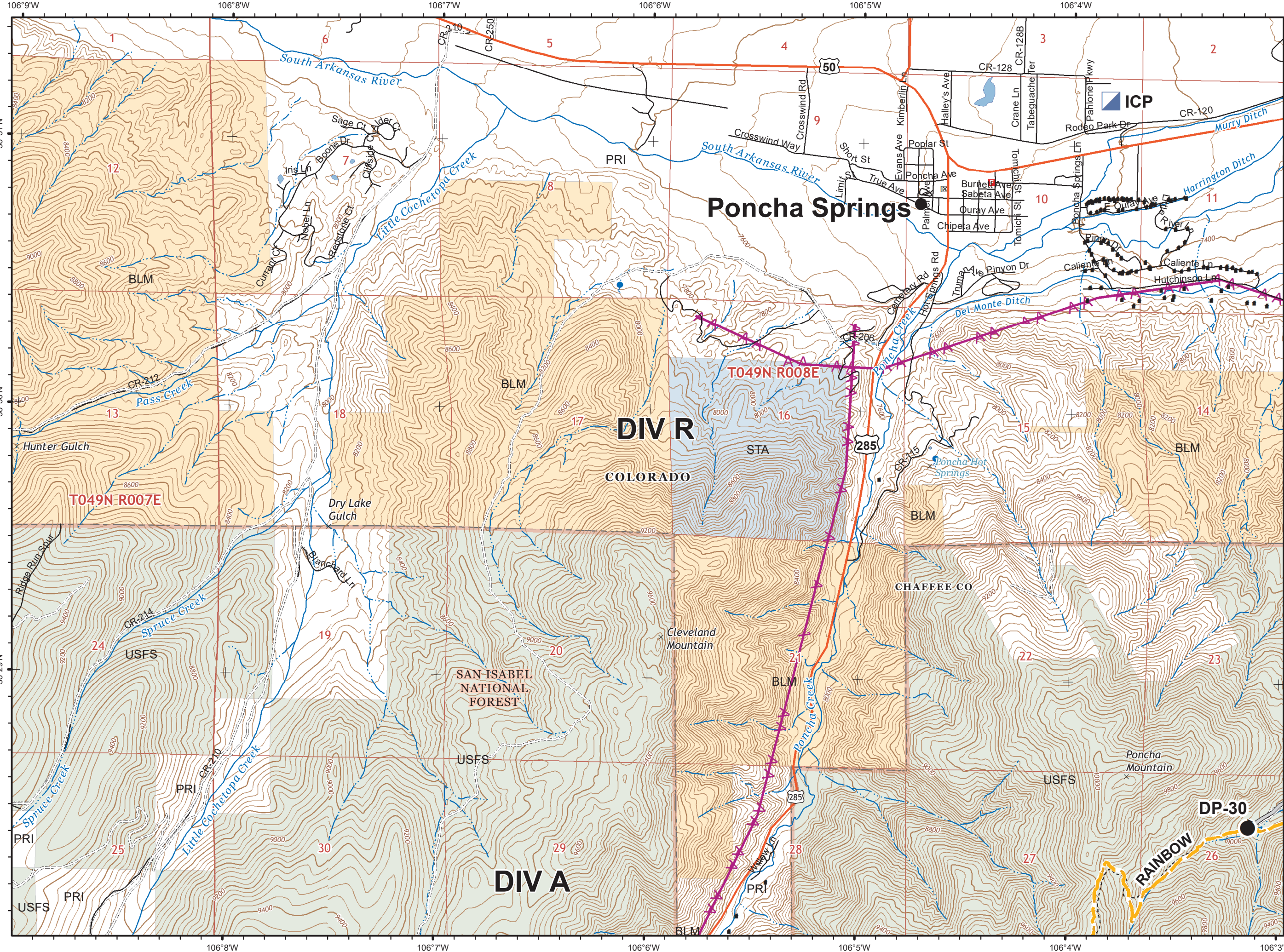


**IAP Index**  
**Decker Fire**  
**CO\_RGF-1388**  
**10/24/2019**  
**8,910 Acres**

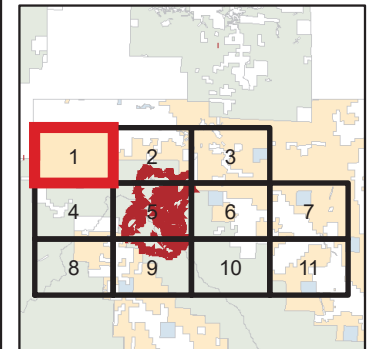
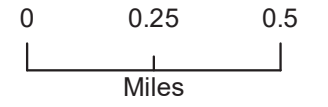


- (X) Division Break
- [ ] Branch Break
- Completed Line
- XXXXX Completed Dozer Line
- H - H - Completed Hand Line
- R - R - Road as Completed Line
- Limited Action Line - Minimal Threat
- Uncontrolled Fire Edge
- Access or Improved Road
- ~ Line Break Completed
- ⊗ • Proposed Dozer Line
- Planned Fire Line
- (X)(X) Ridge/Geographic Feature
- ▨ Wildfires within 10 years
- OWNER**
- BLM
- PRI
- STA
- USFS

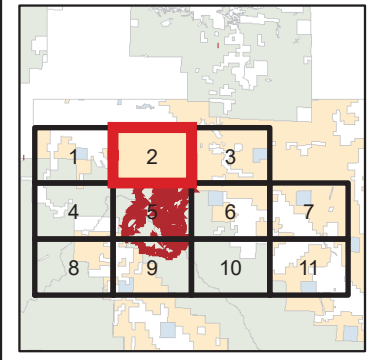
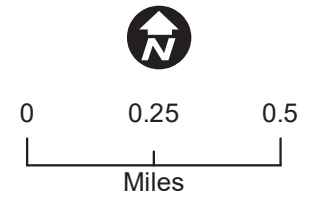
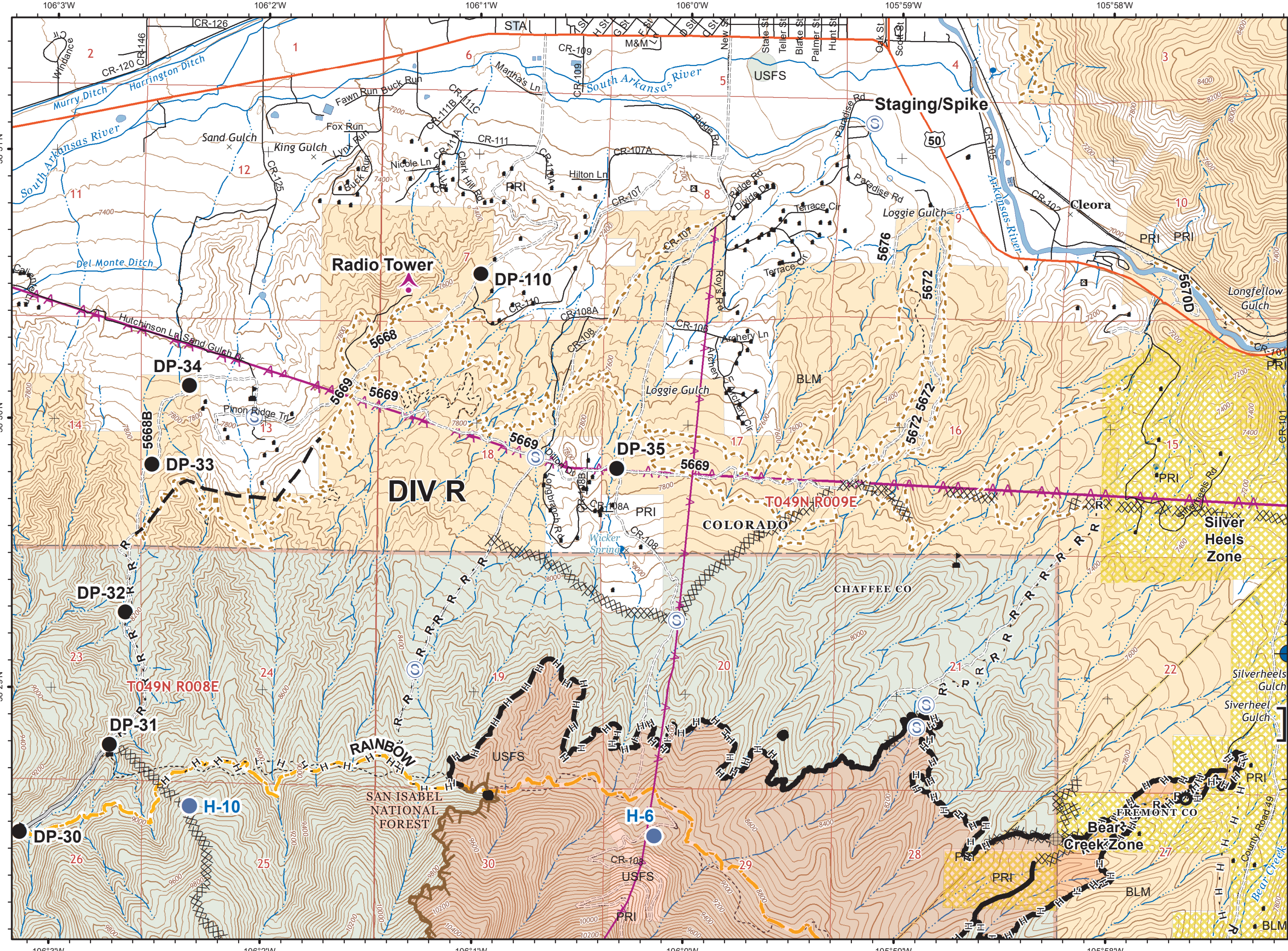




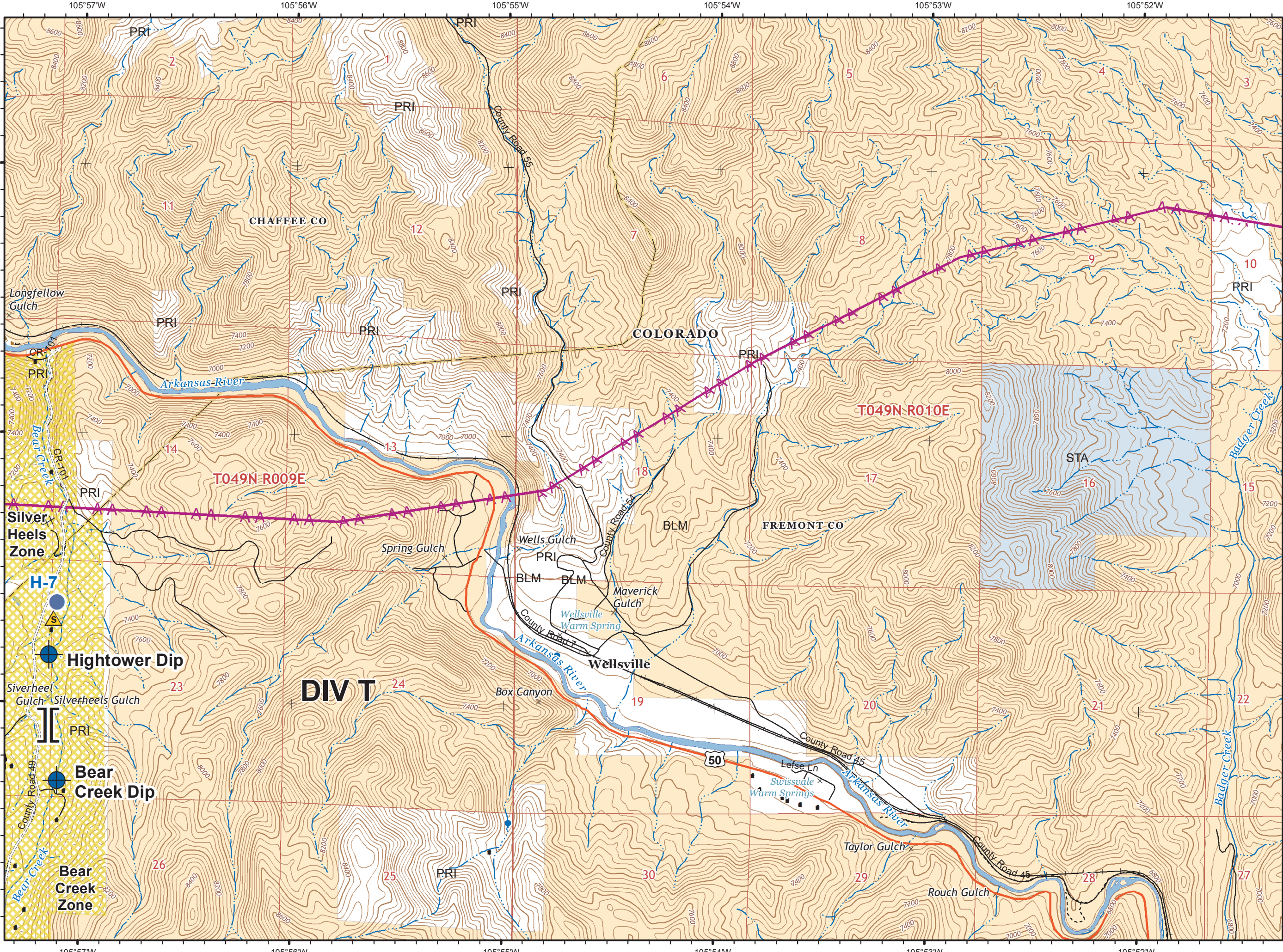
**IAP**  
 Decker Fire  
 CO\_RGF-1388  
 10/24/2019  
 8,910 Acres  
**Page 1**



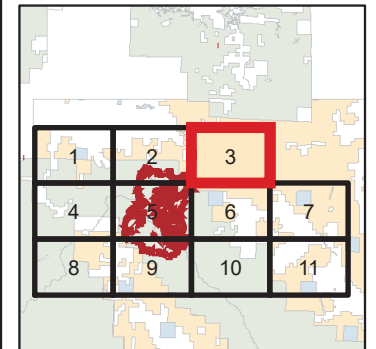
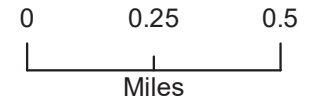
- Drop Point
- Incident Command Post
- Value at Risk
- Structure
- Access or Improved Road
- Transmission Line Corridors



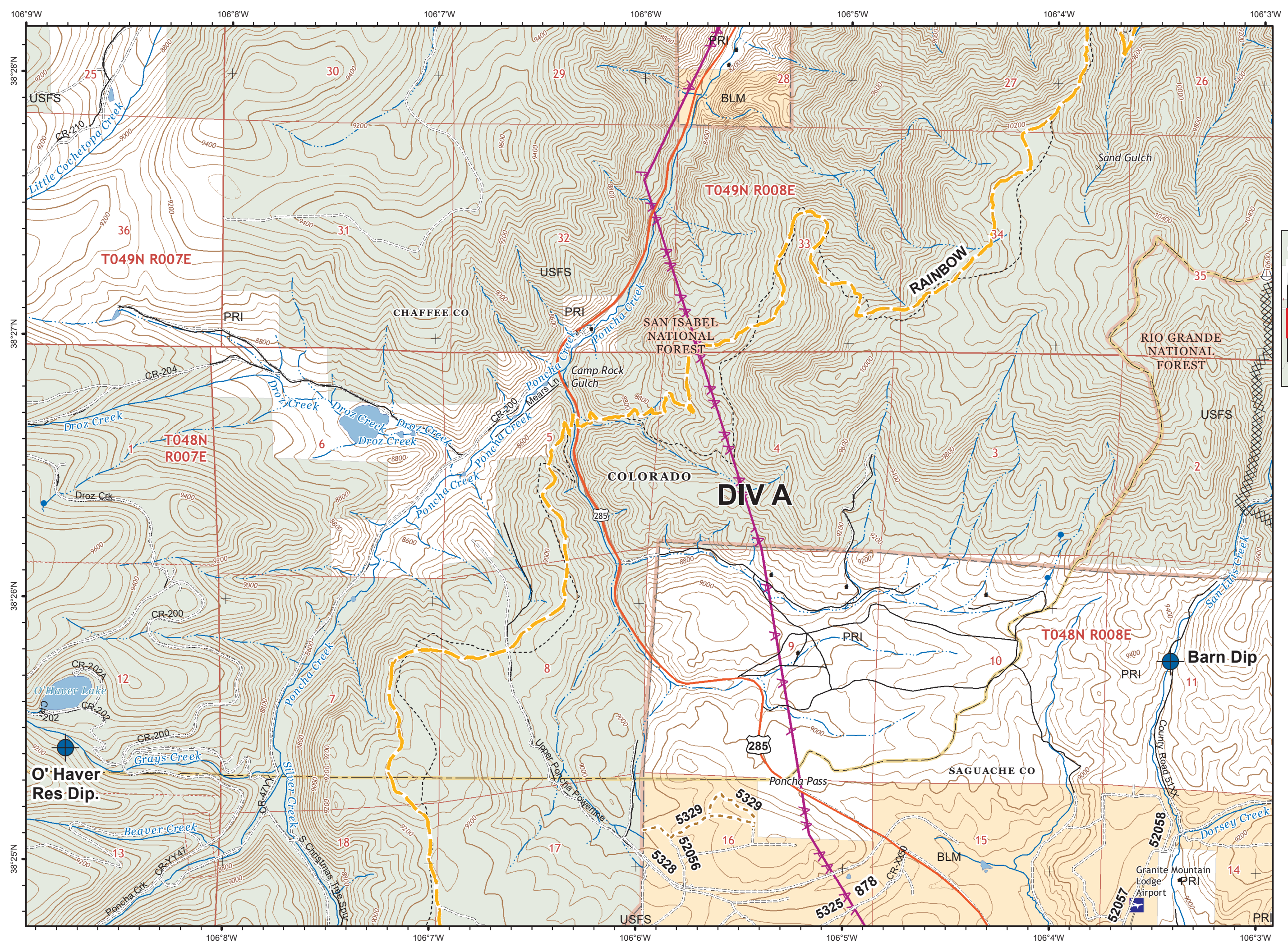
- Aerial Hazard
- Culvert
- Dip Site
- Drop Point
- Fence - Cut/Damaged
- Helispot
- Safety Zone
- Staging Area
- Value at Risk
- Branch Break
- Structure
- Completed Line
- Completed Dozer Line
- Completed Hand Line
- Road as Completed Line
- Limited Action Line - Minimal Threat
- Access or Improved Road
- Planned Fire Line
- Evacuation Type**
- Pre-Evacuated
- Transmission Line Corridors



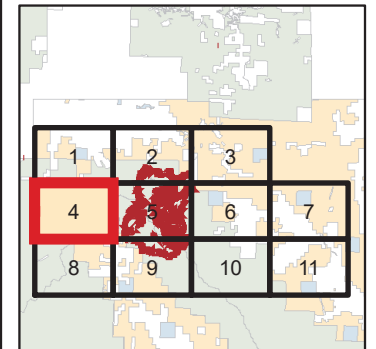
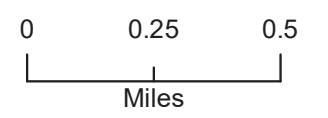
IAP  
Decker Fire  
CO\_RGF-1388  
10/24/2019  
8,910 Acres  
**Page 3**



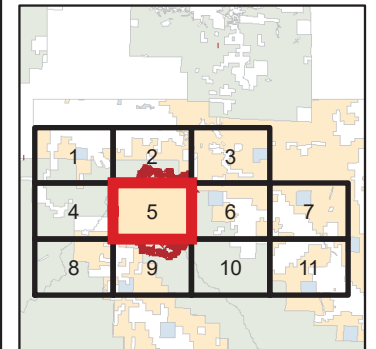
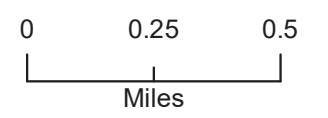
- Dip Site
- Helispot
- Safety Zone
- Branch Break
- Structure
- Completed Line
- Completed Dozer Line
- Completed Hand Line
- Evacuation Type
  - Pre-Evacuated
  - Transmission Line Corridors



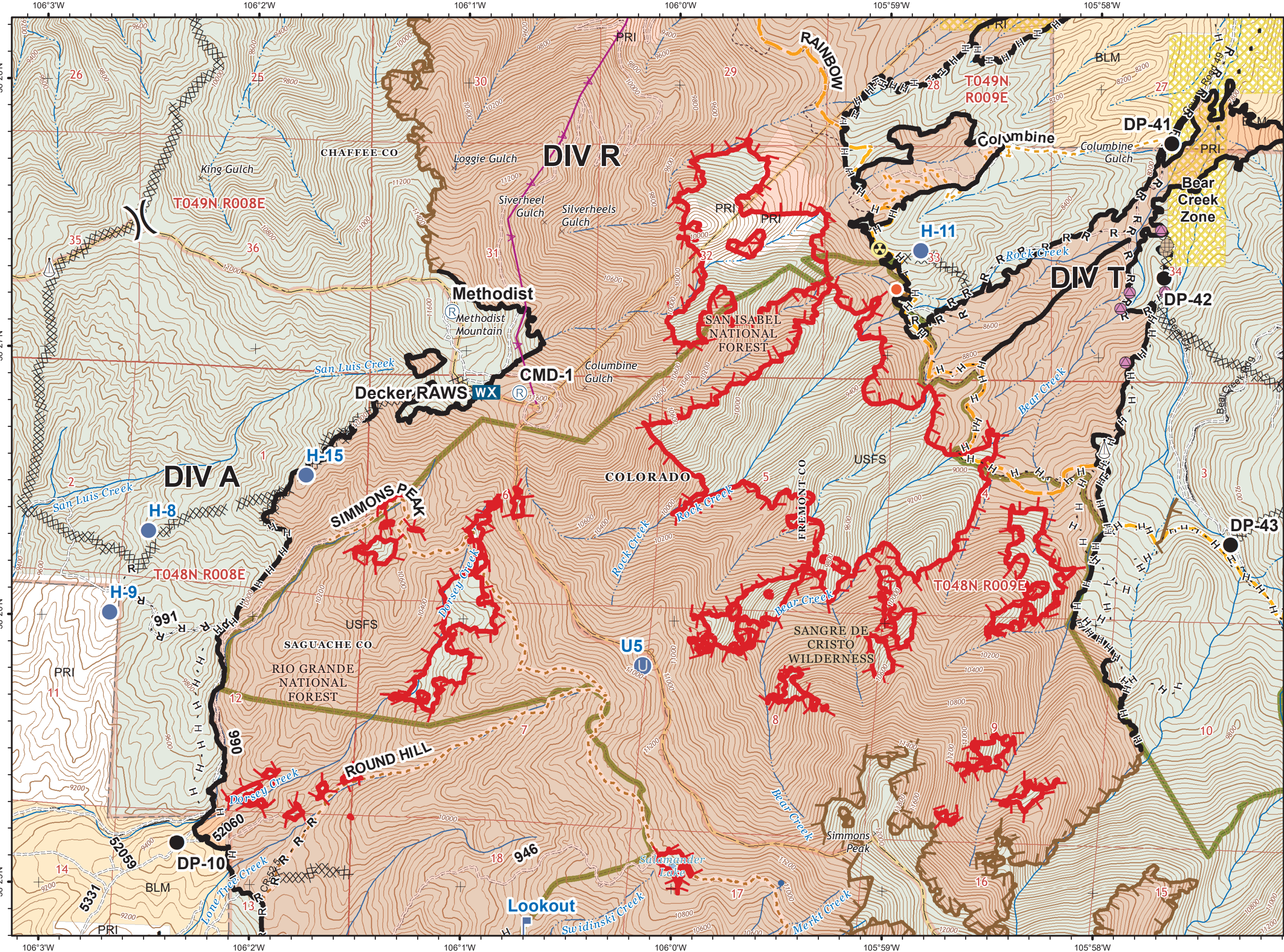
**IAP**  
 Decker Fire  
 CO\_RGF-1388  
 10/24/2019  
 8,910 Acres  
**Page 4**

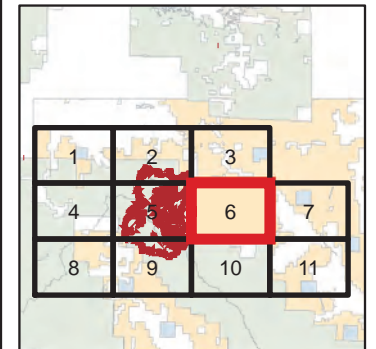
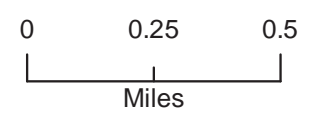
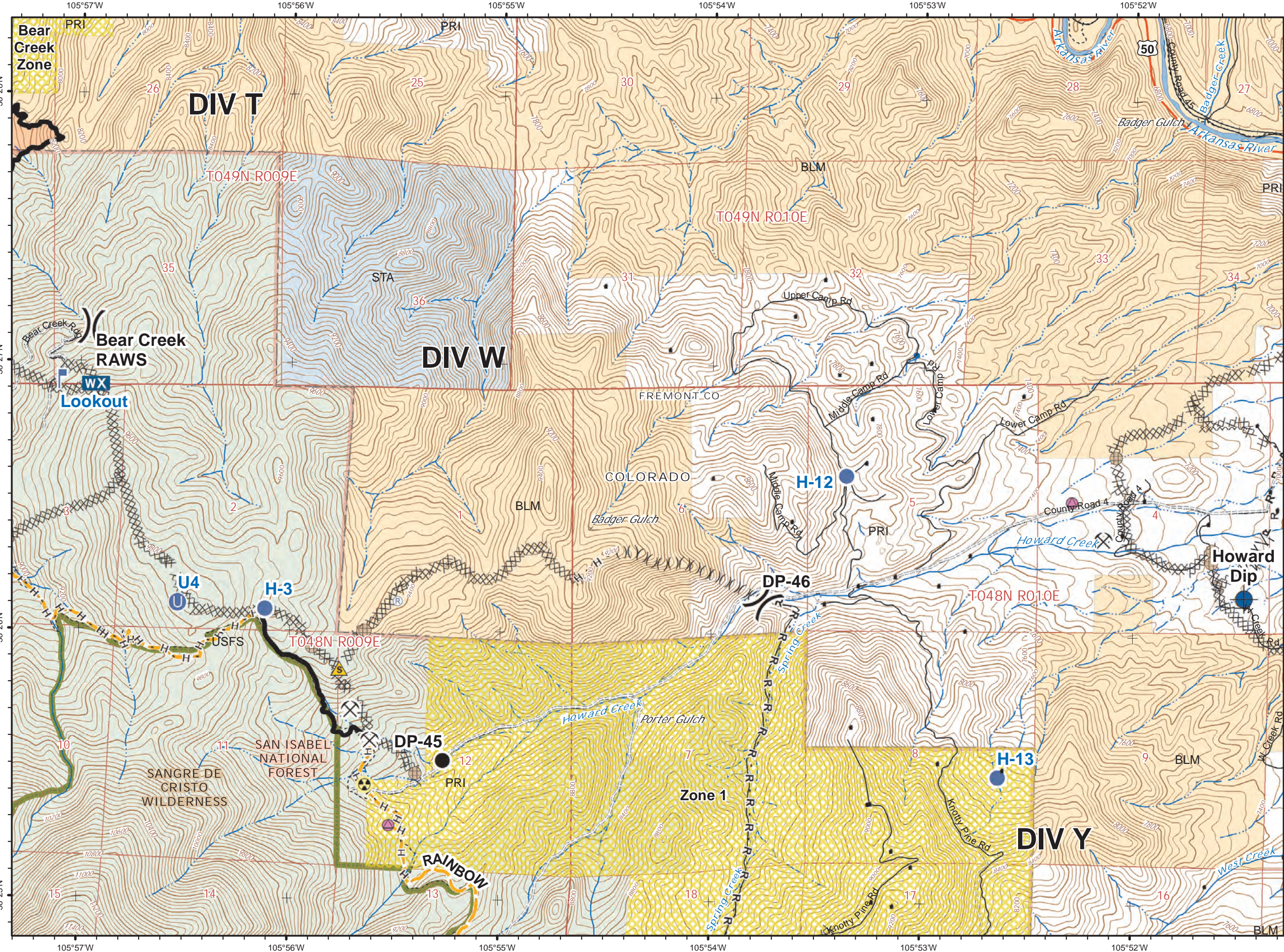


- Dip Site
- Sling Site
- Structure
- Completed Dozer Line
- Transmission Line Corridors

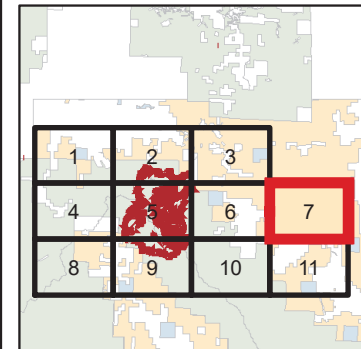
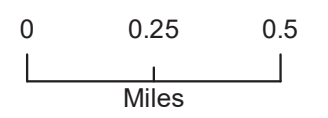


- Drop Point
- Fence - Cut/Damaged
- Hazard
- Unimproved Landing Area
- Helispot
- Hot Spot
- Lookout
- Mobile Weather Unit
- Repair Point
- Repeater
- Sling Site
- Value at Risk
- Division Break
- Structure
- Completed Line
- Completed Dozer Line
- Completed Hand Line
- Road as Completed Line
- Limited Action Line - Minimal Threat
- Uncontrolled Fire Edge
- Pre-Evacuated
- Wilderness

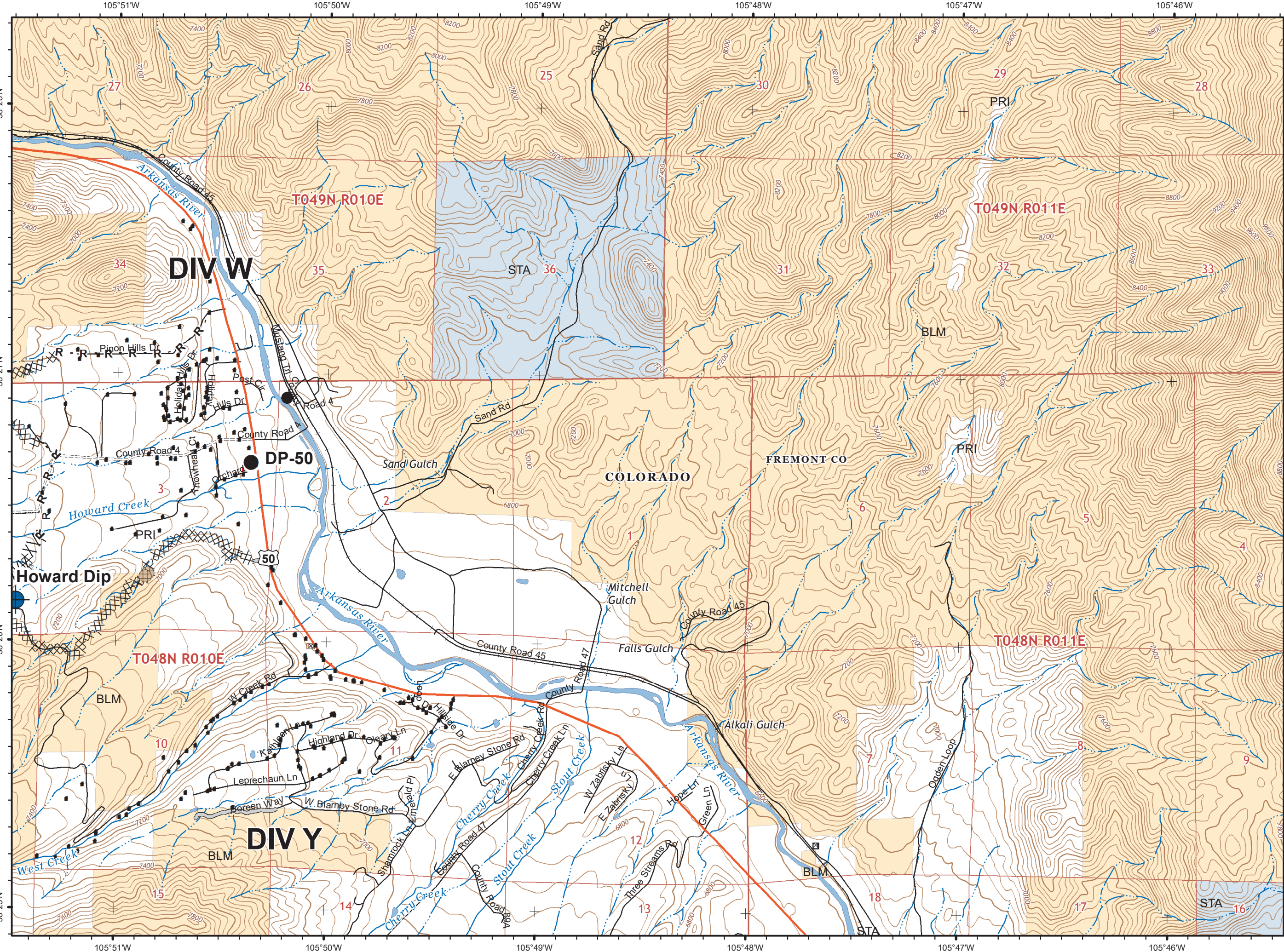




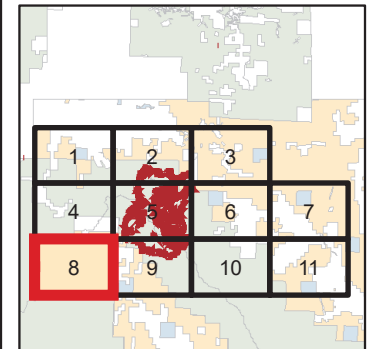
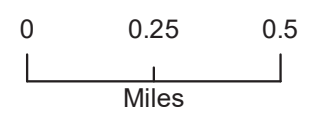
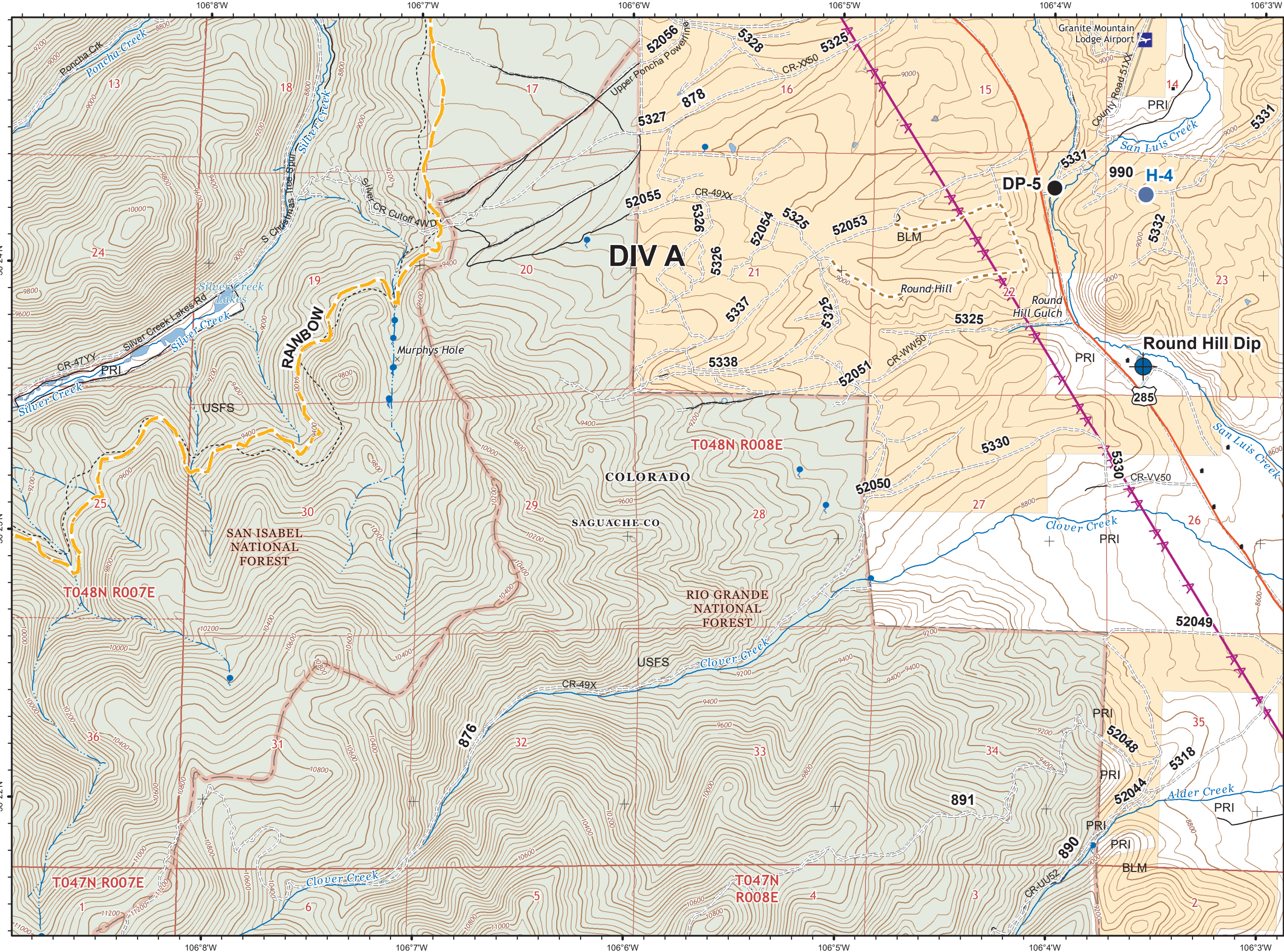
- Dip Site
- Drop Point
- Hazard
- Unimproved Landing Area
- Helispot
- Mine Shaft
- Lookout
- Mobile Weather Unit
- Repair Point
- Repeater
- Safety Zone
- Division Break
- Structure
- Completed Line
- Completed Dozer Line
- Completed Hand Line
- Road as Completed Line
- Line Break Completed
- Ridge/Geographic Feature
- Pre-Evacuated
- Wilderness



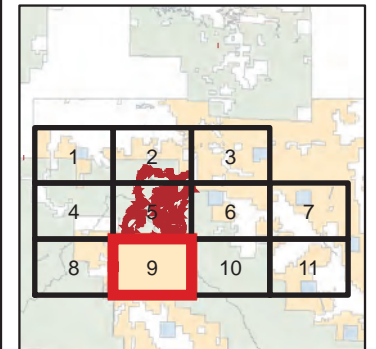
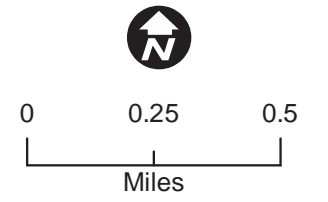
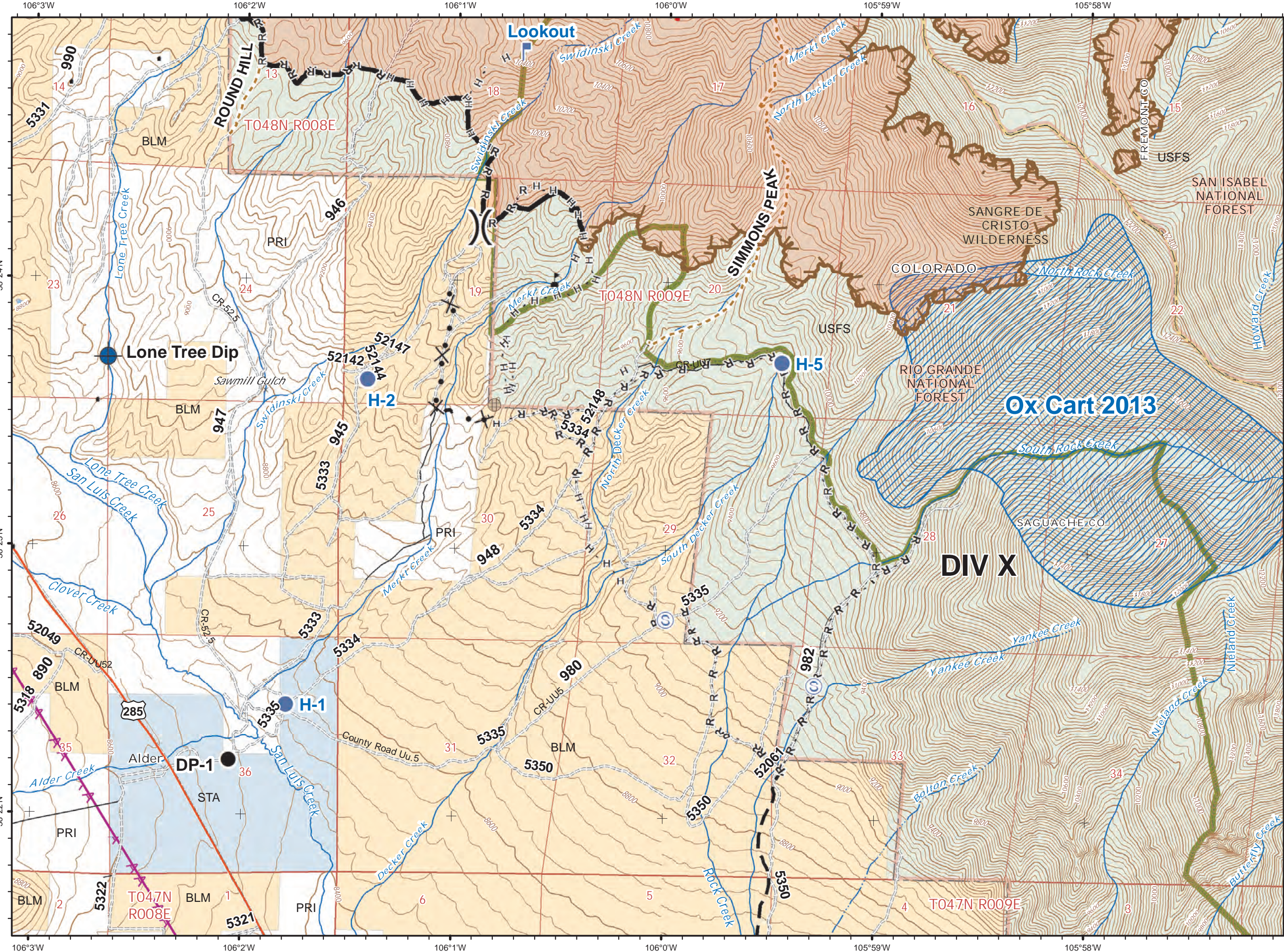
- Dip Site
- Drop Point
- Fence - Cut/Damaged
- Structure
- Completed Dozer Line
- R - Road as Completed Line
- Access or Improved Road
- Line Break Completed



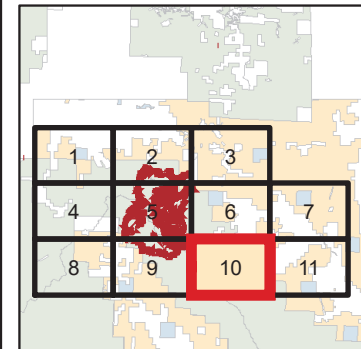
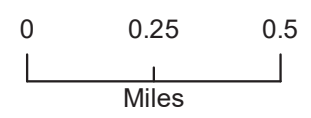




- Dip Site
- Drop Point
- Hellsite
- Structure
- Transmission Line Corridors



- Dip Site
- Drop Point
- Fence - Cut/Damaged
- Lookout
- Staging Area
- Value at Risk
- Division Break
- Structure
- Completed Line
- Completed Hand Line
- Road as Completed Line
- Limited Action Line - Minimal Threat
- Uncontrolled Fire Edge
- Proposed Dozer Line
- Planned Fire Line
- Wildfires within 10 years
- Wilderness
- Transmission Line Corridors



- Fence - Cut/Damaged
- Helispot
- Repair Point
- Branch Break
- Structure
- Completed Dozer Line
- R - Road as Completed Line
- Wildfires within 10 years
- Pre-Evacuated
- Wilderness

