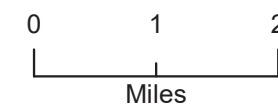
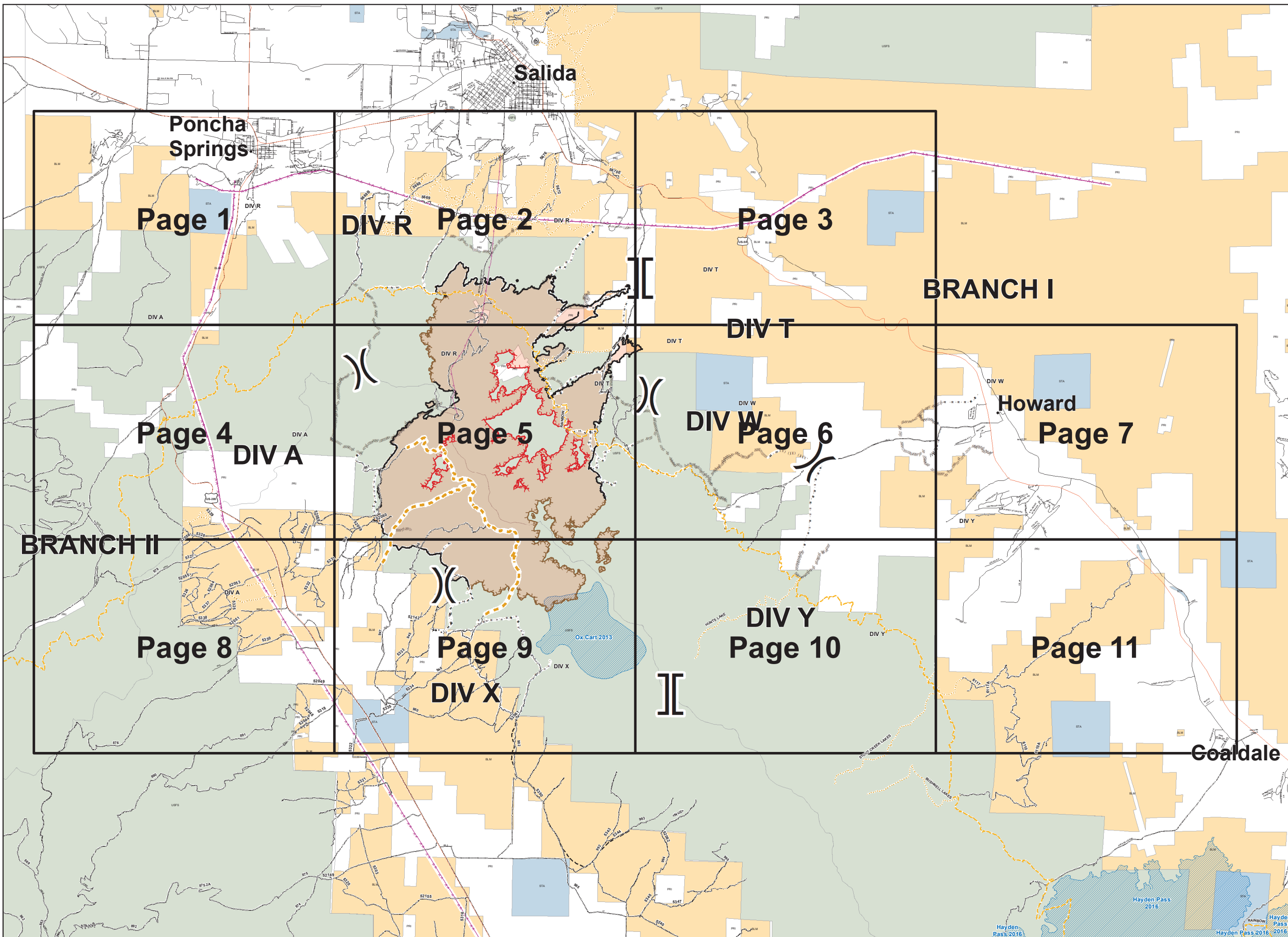


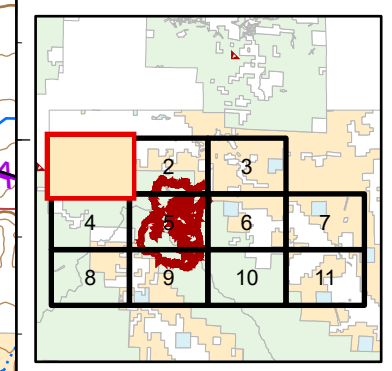
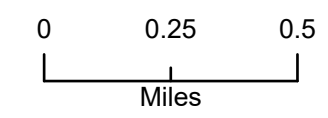
**IAP Index**  
**Decker Fire**  
**CO\_RGF-1388**  
**10/26/2019**  
**8,959 Acres**



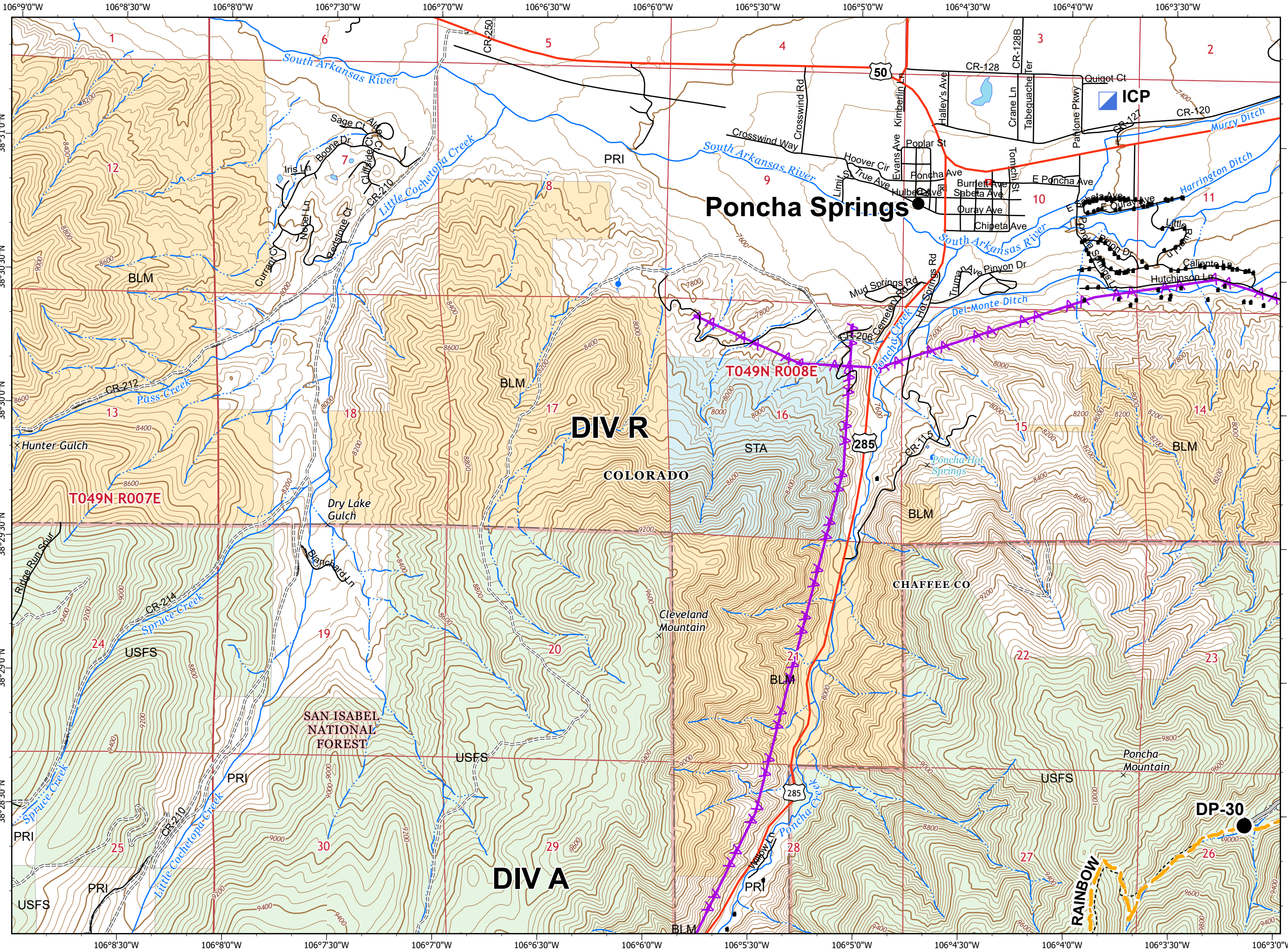
- ( ) Division Break
- [ ] Branch Break
- Completed Line
- XXXXX Completed Dozer Line
- H - H - Completed Hand Line
- R - R - Road as Completed Line
- Limited Action Line - Minimal Threat
- Uncontrolled Fire Edge
- Access or Improved Road
- ~ Line Break Completed
- ⊗ Proposed Dozer Line
- Planned Fire Line
- ( )( ) Ridge/Geographic Feature
- ▨ Wildfires within 10 years
- OWNER**
- BLM
- PRI
- STA
- USFS



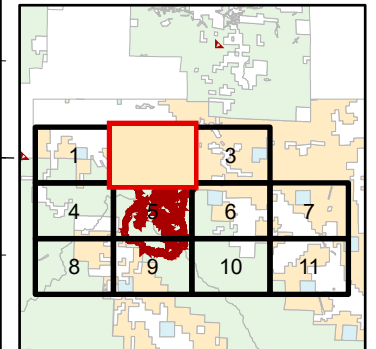
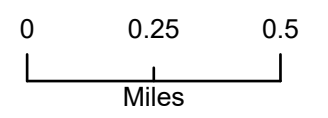
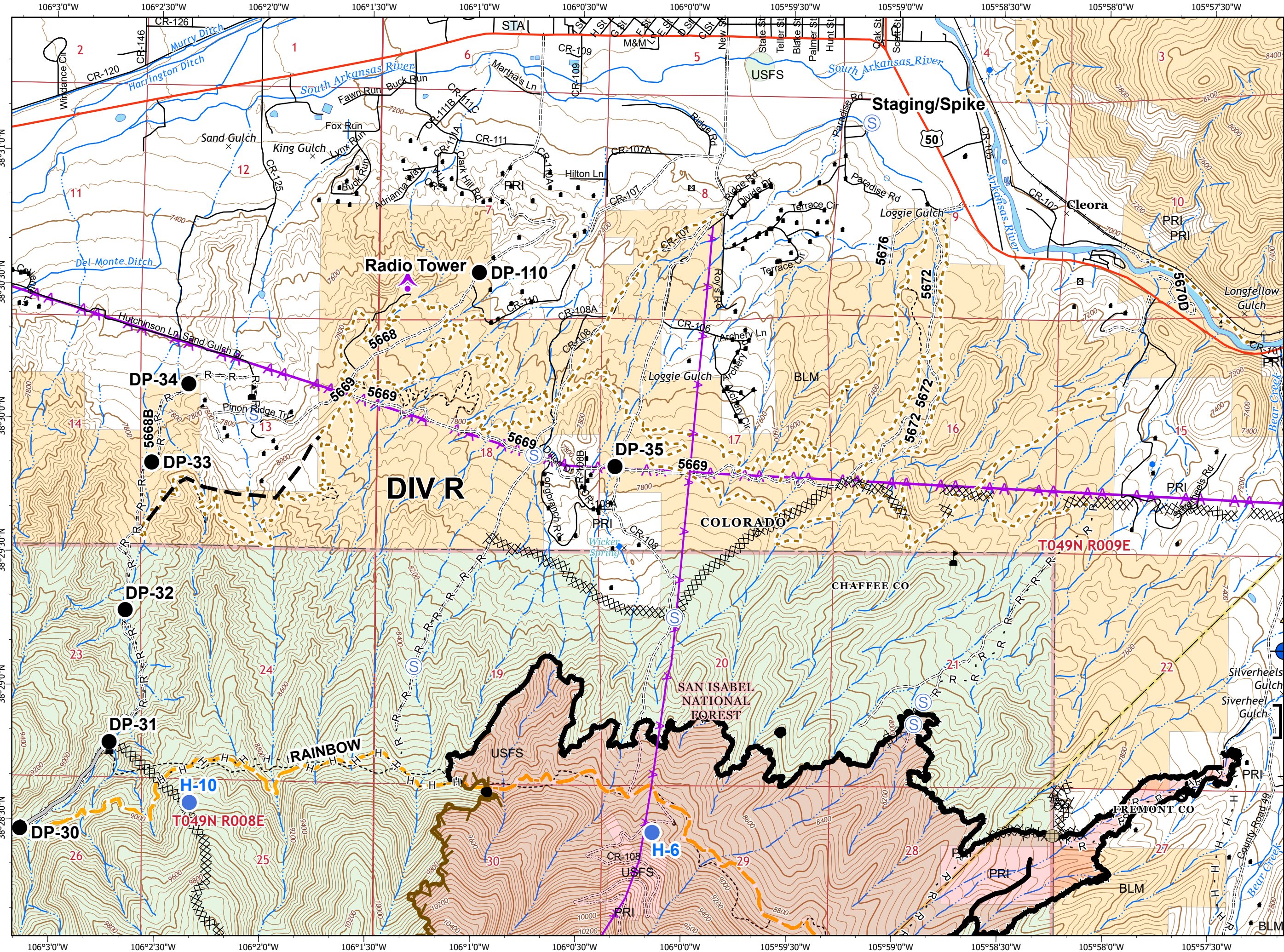




- Drop Point
- Incident Command Post
- ▲ Value at Risk
- Structure
- Access or Improved Road
- Transmission Line Corridors

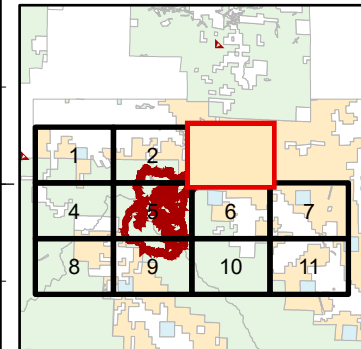
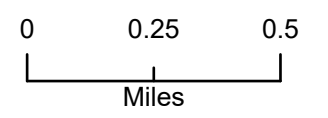




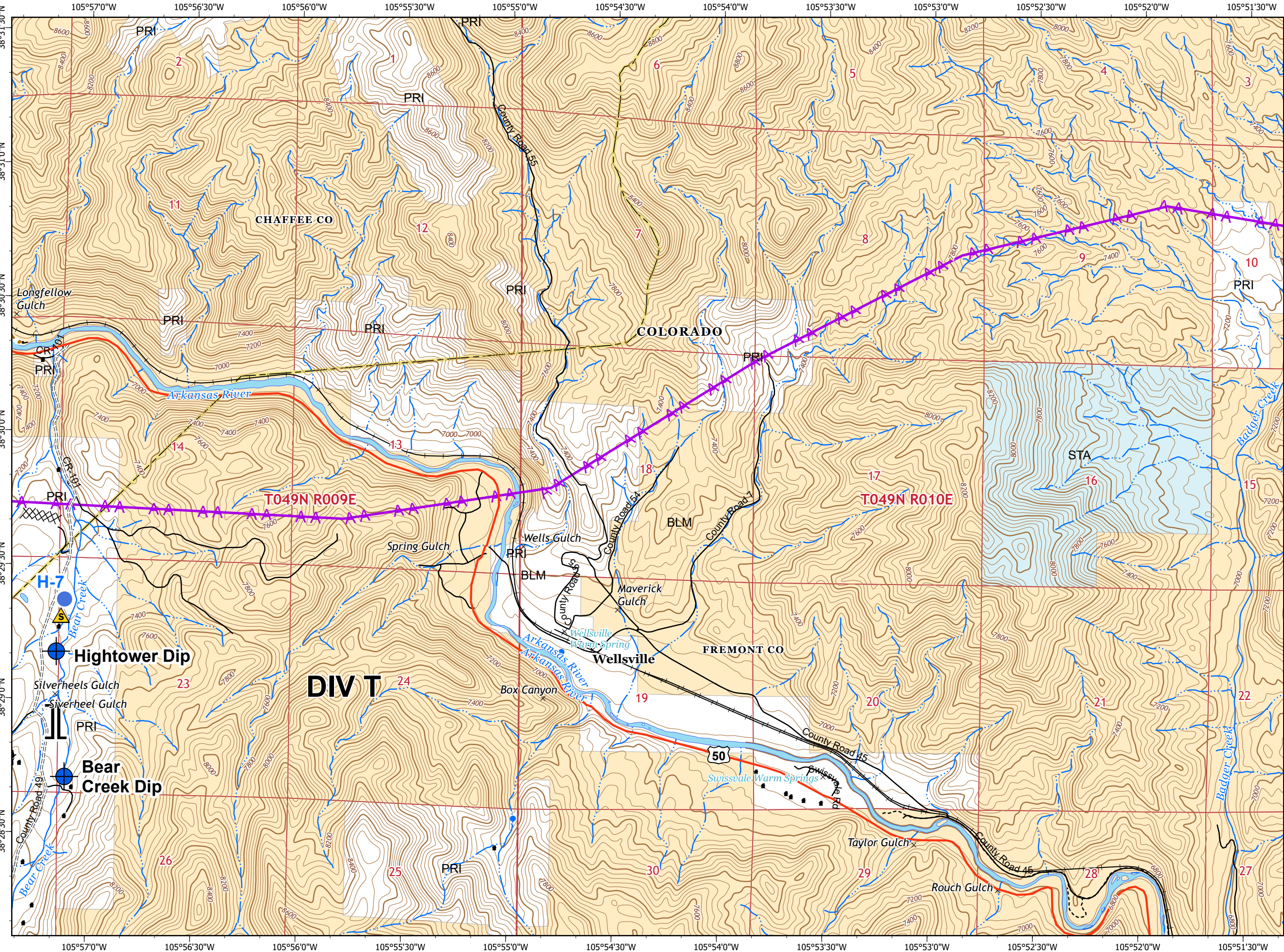


- |  |                     |  |                                      |
|--|---------------------|--|--------------------------------------|
|  | Aerial Hazard       |  | Structure                            |
|  | Culvert             |  | Completed Line                       |
|  | Dip Site            |  | Completed Dozer Line                 |
|  | Drop Point          |  | Completed Hand Line                  |
|  | Fence - Cut/Damaged |  | R Road as Completed Line             |
|  | Hellspot            |  | Limited Action Line - Minimal Threat |
|  | Safety Zone         |  | Access or Improved Road              |
|  | Staging Area        |  | Planned Fire Line                    |
|  | Value at Risk       |  | Transmission Line Corridors          |
|  | Branch Break        |  |                                      |

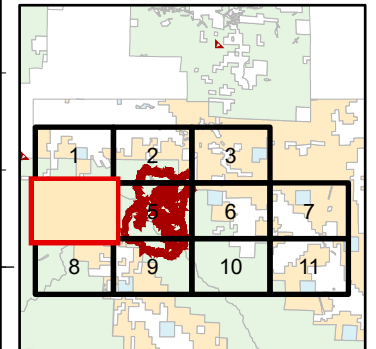
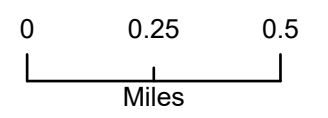
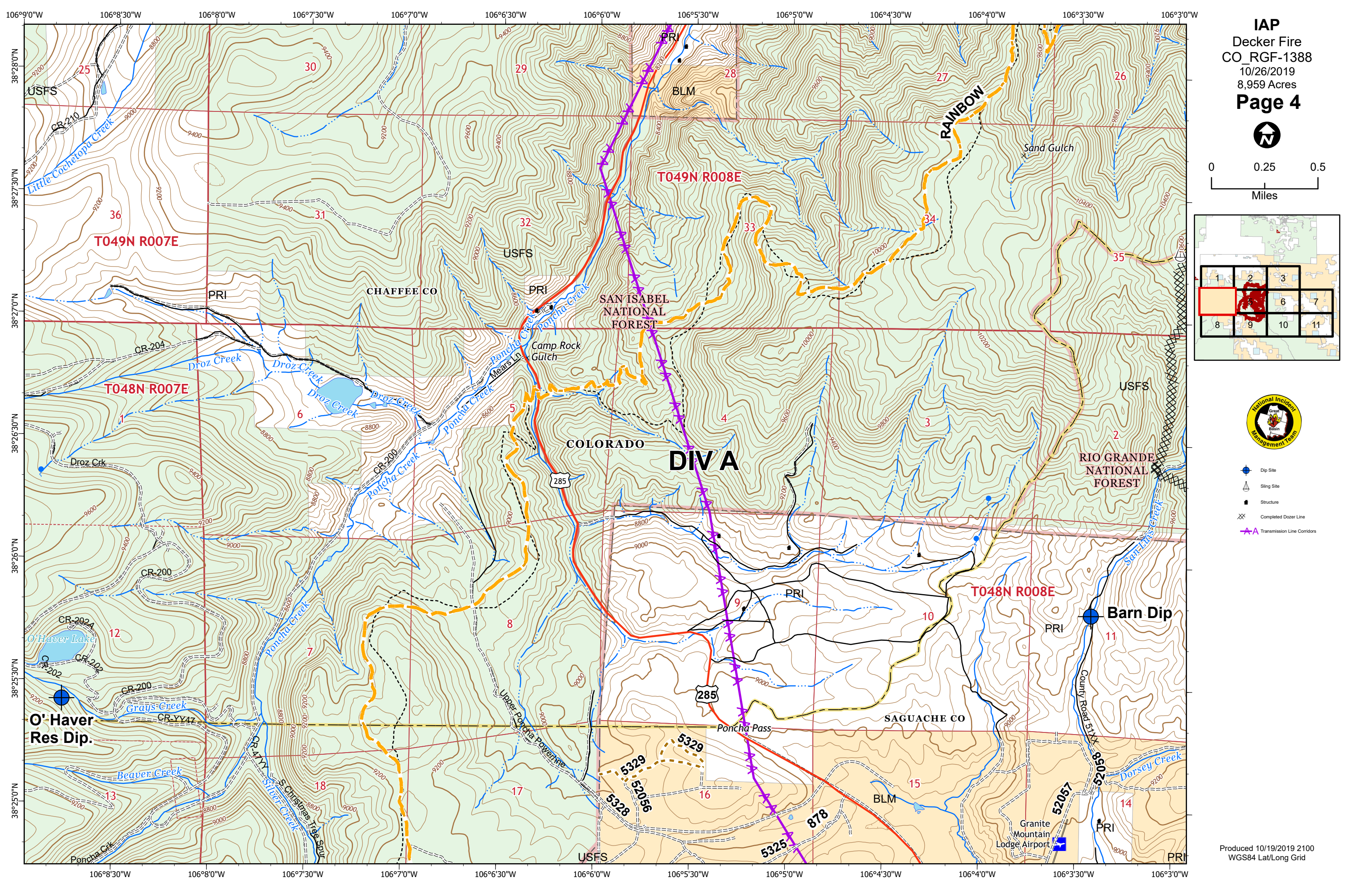




- Dip Site
- Helispot
- Safety Zone
- Branch Break
- Structure
- Completed Line
- Completed Dozer Line
- Completed Hand Line
- Road as Completed Line
- Transmission Line Corridors

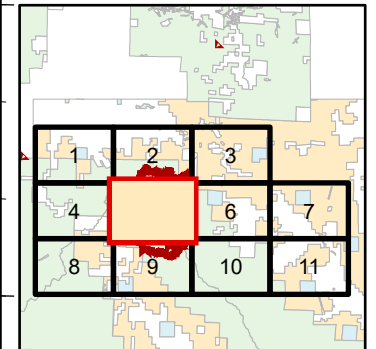
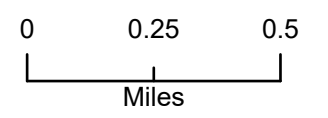




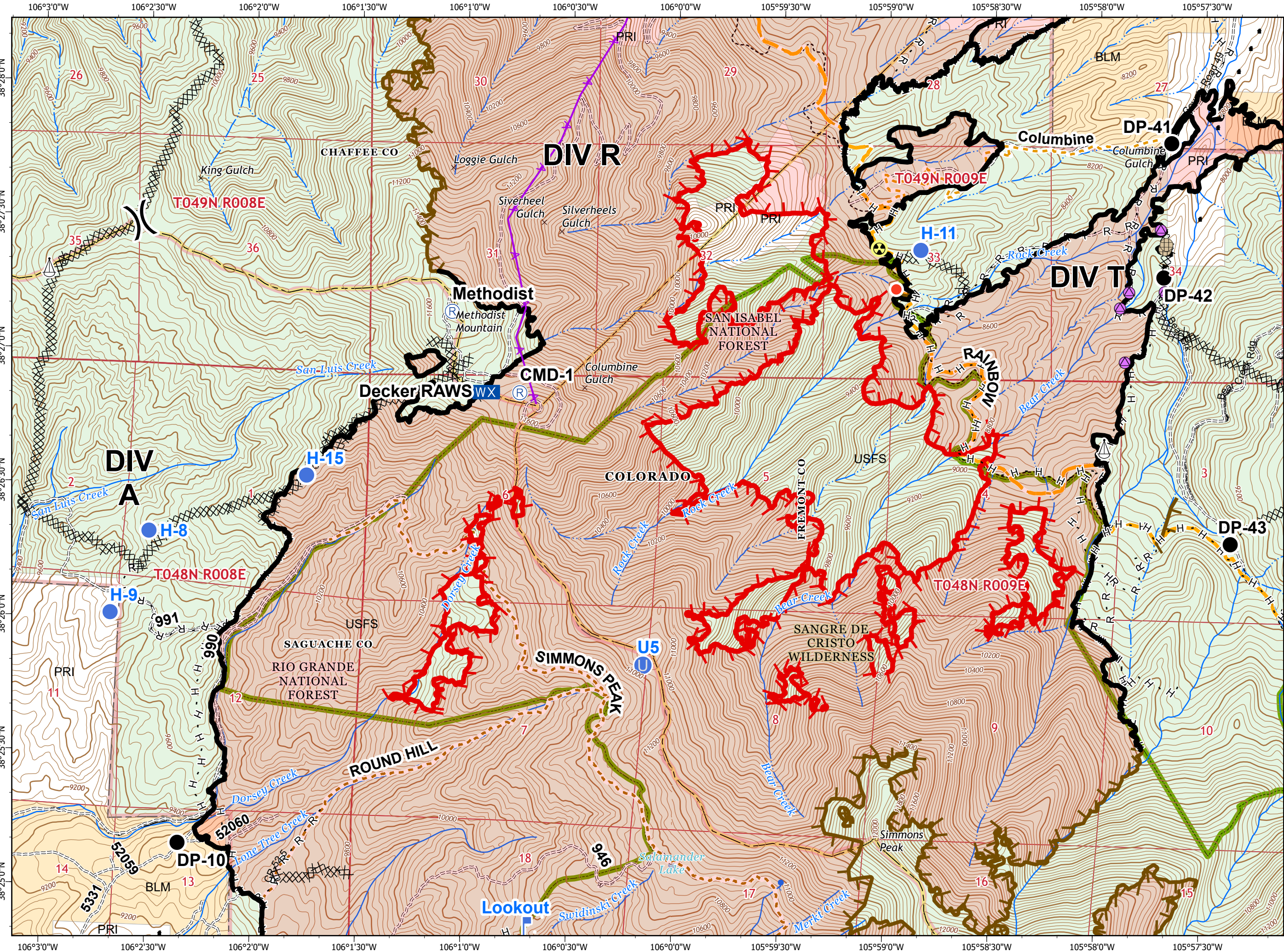


- Dip Site
- Sling Site
- Structure
- Completed Dozer Line
- Transmission Line Corridors

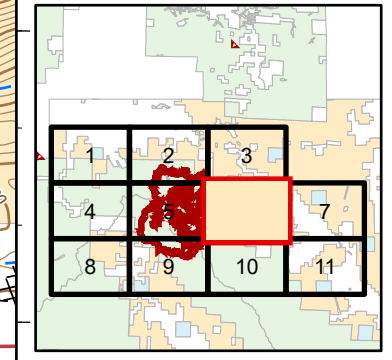
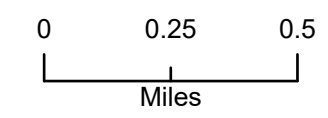




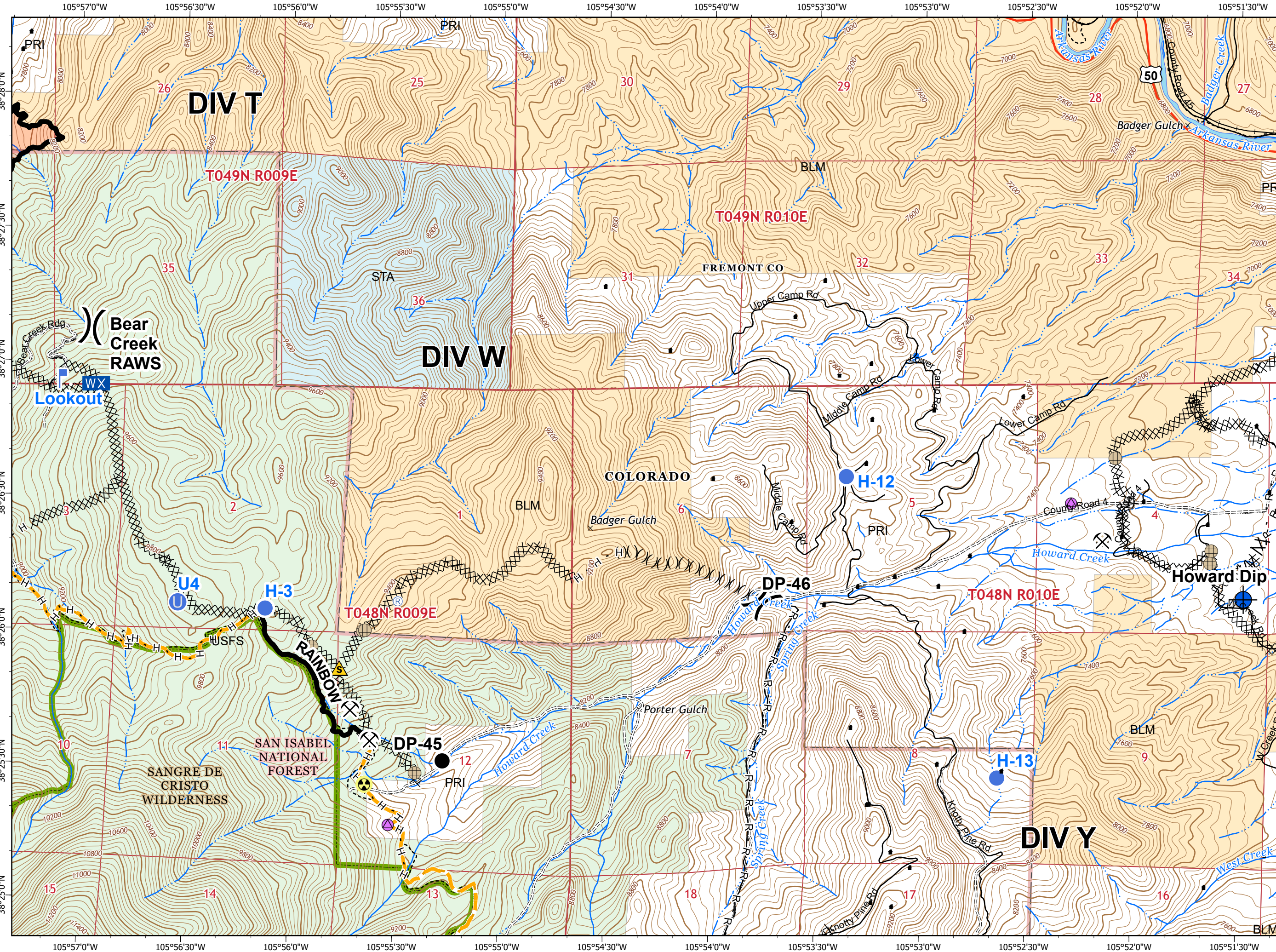
- Drop Point
- Fence - Cut/Damaged
- Hazard
- Unimproved Landing Area
- Hot Spot
- Lookout
- Mobile Weather Unit
- Repair Point
- Repeater
- Sling Site
- Value at Risk
- Division Break
- Structure
- Completed Line
- Completed Dozer Line
- Completed Hand Line
- Road as Completed Line
- Limited Action Line - Minimal Threat
- Uncontrolled Fire Edge
- Wilderness



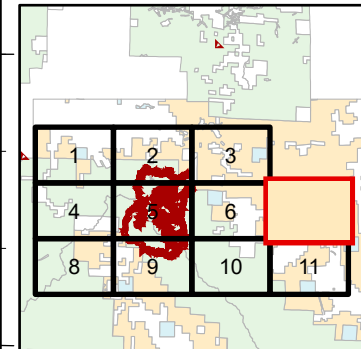
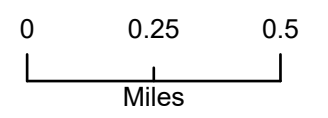




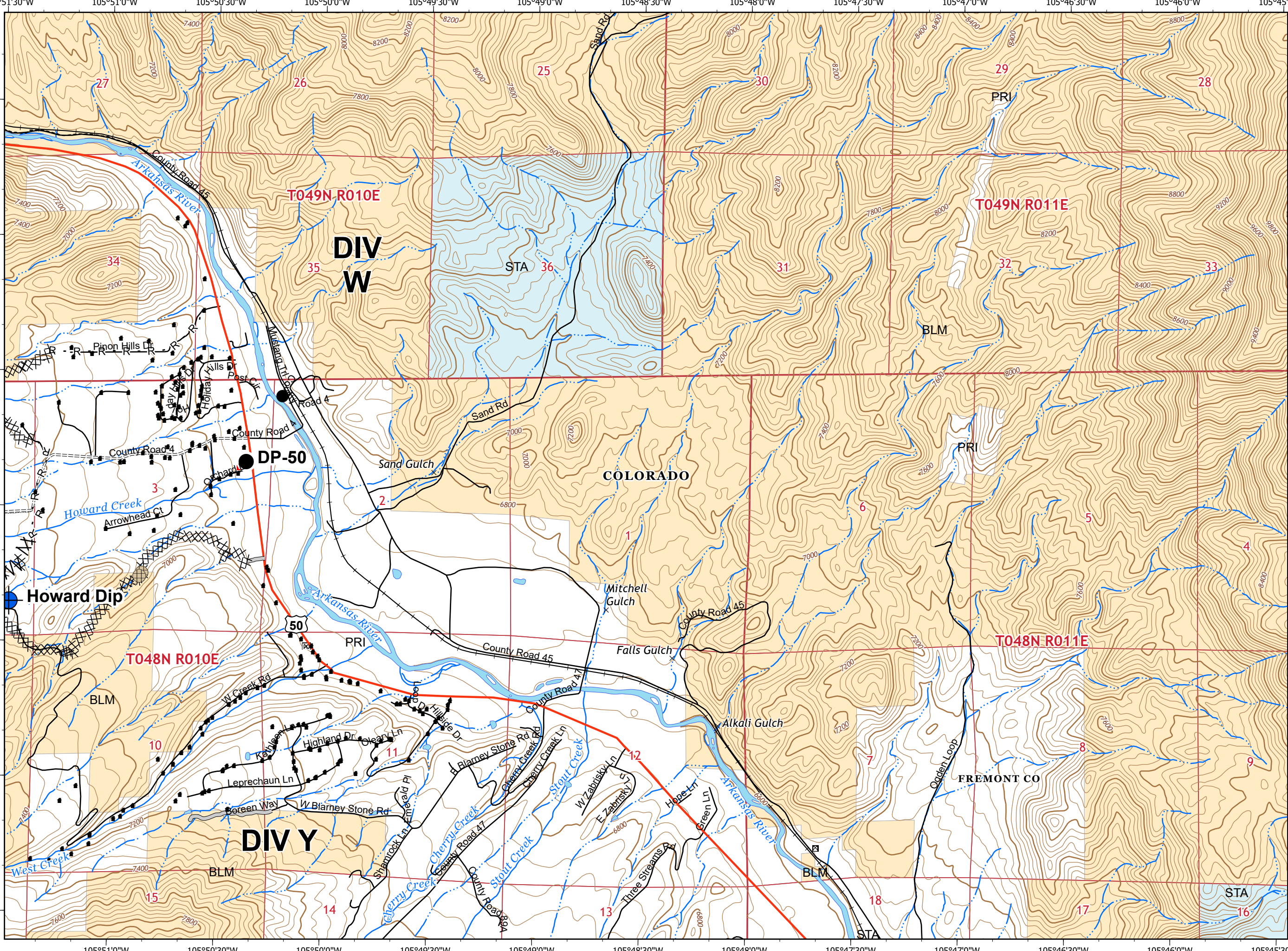
- |  |                         |  |                          |
|--|-------------------------|--|--------------------------|
|  | Dip Site                |  | Safety Zone              |
|  | Drop Point              |  | Division Break           |
|  | Fence - Cut/Damaged     |  | Structure                |
|  | Hazard                  |  | Completed Line           |
|  | Unimproved Landing Area |  | Completed Dozer Line     |
|  | Helispot                |  | Completed Hand Line      |
|  | Mine Shaft              |  | Road as Completed Line   |
|  | Lookout                 |  | Line Break Completed     |
|  | Mobile Weather Unit     |  | Ridge/Geographic Feature |
|  | Repair Point            |  | Wilderness               |
|  | Repeater                |  |                          |



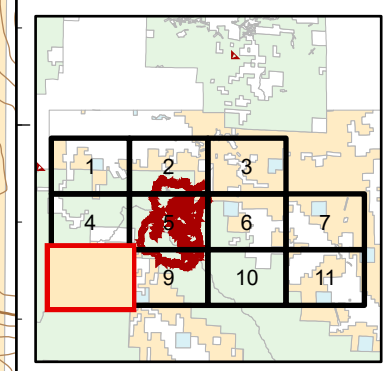
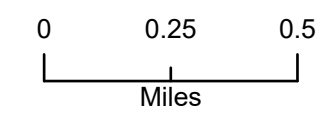




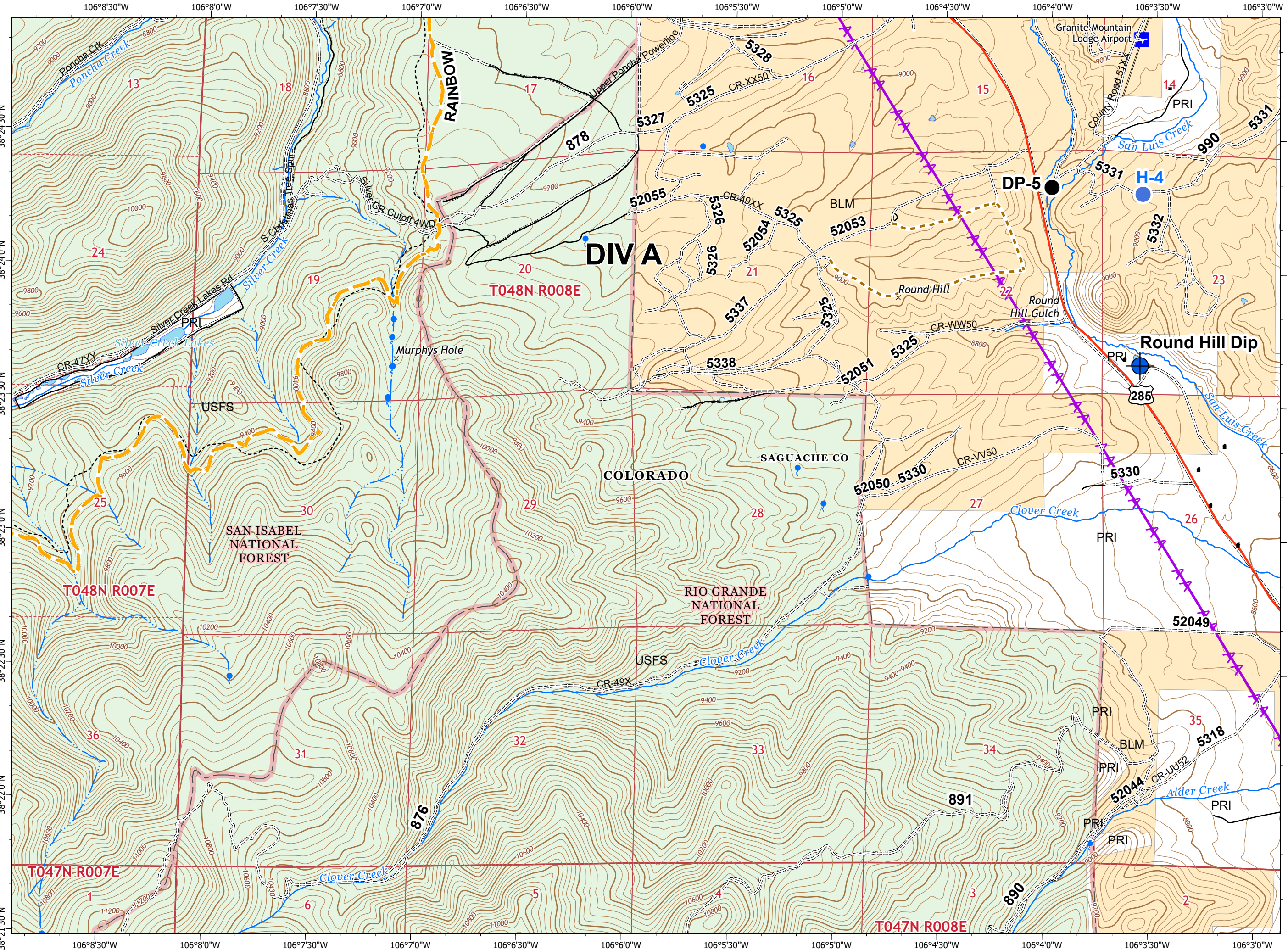
- Dip Site
- Drop Point
- Fence - Cut/Damaged
- Structure
- Completed Dozer Line
- Road as Completed Line
- Access or Improved Road
- Line Break Completed



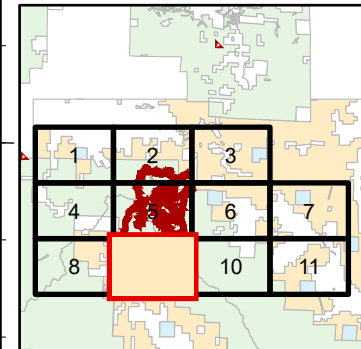
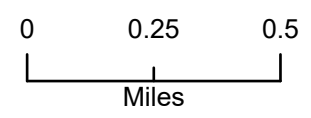




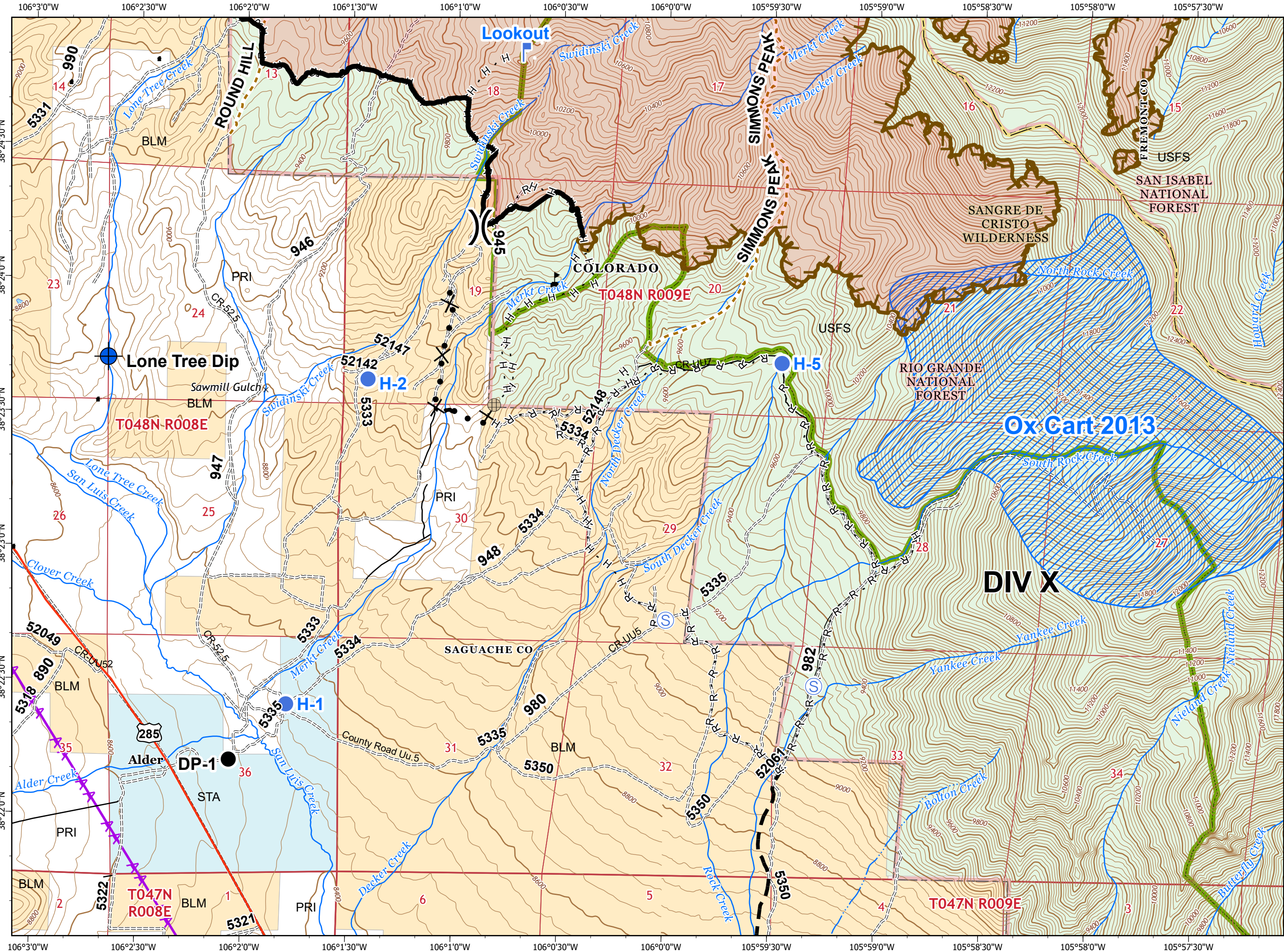
- Dip Site
- Drop Point
- Helispot
- Structure
- Transmission Line Corridors



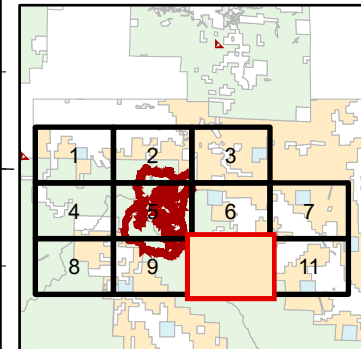
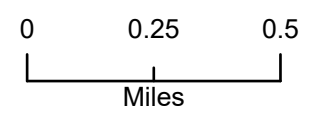




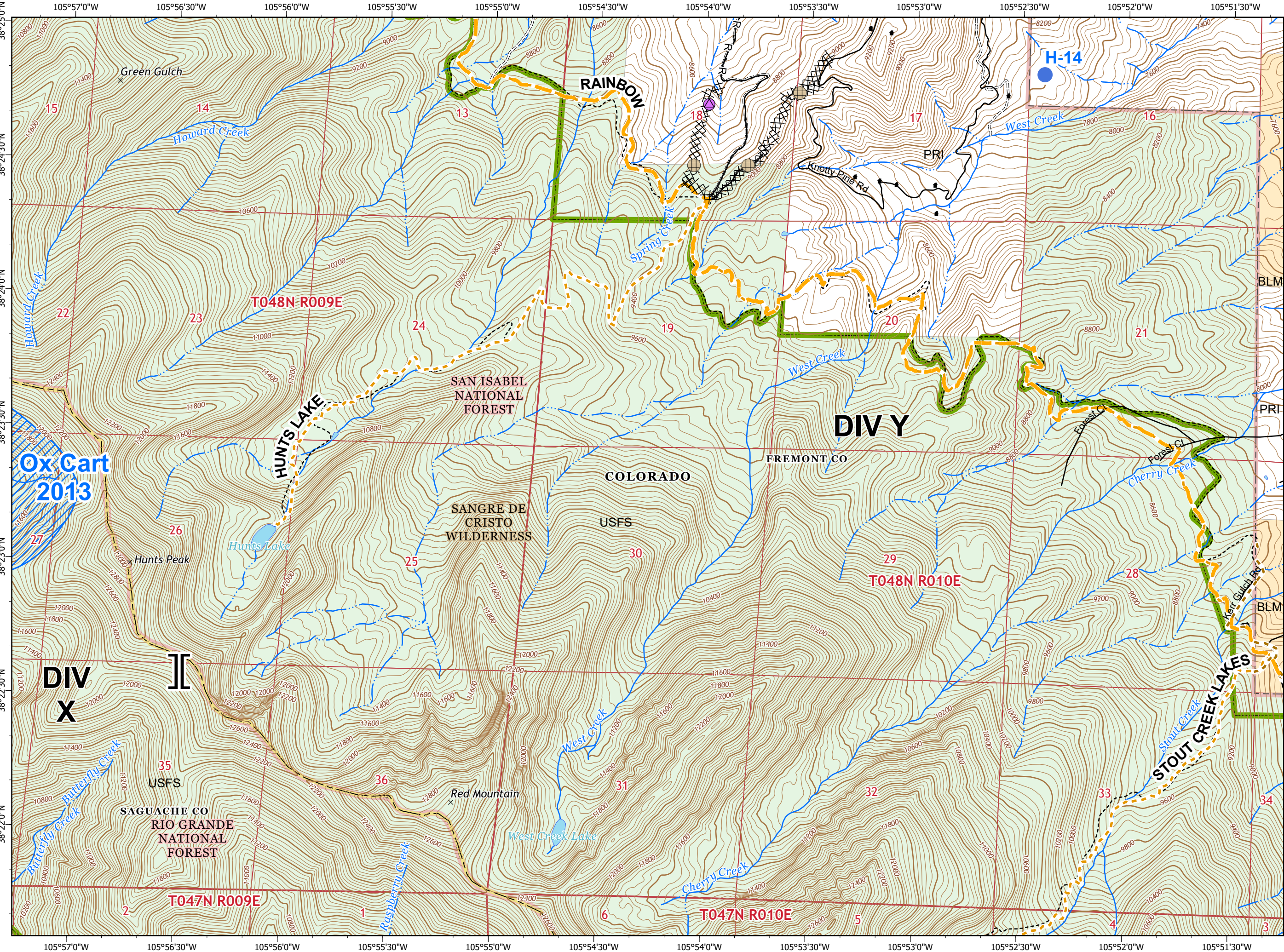
- Dip Site
- Drop Point
- Fence - Cut/Damaged
- Hellsport
- Lookout
- Staging Area
- Value at Risk
- Division Break
- Structure
- Completed Line
- Completed Dozer Line
- Completed Hand Line
- Road as Completed Line
- Limited Action Line - Minimal Threat
- Proposed Dozer Line
- Planned Fire Line
- Wildfires within 10 years
- Wilderness
- Transmission Line Corridors



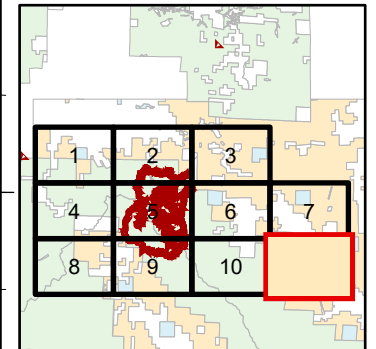
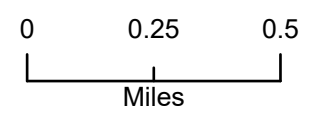




- Fence - Cut/Damaged
- Hellsport
- Repair Point
- Branch Break
- Structure
- Completed Dozer Line
- Completed Hand Line
- Road as Completed Line
- Wildfires within 10 years
- Wilderness







- Dip Site
- Wilderness

