

**Air Operations Map**  
**Middle Mamm Fire**  
**CO-WRF-000161**  
**10/10/2019**

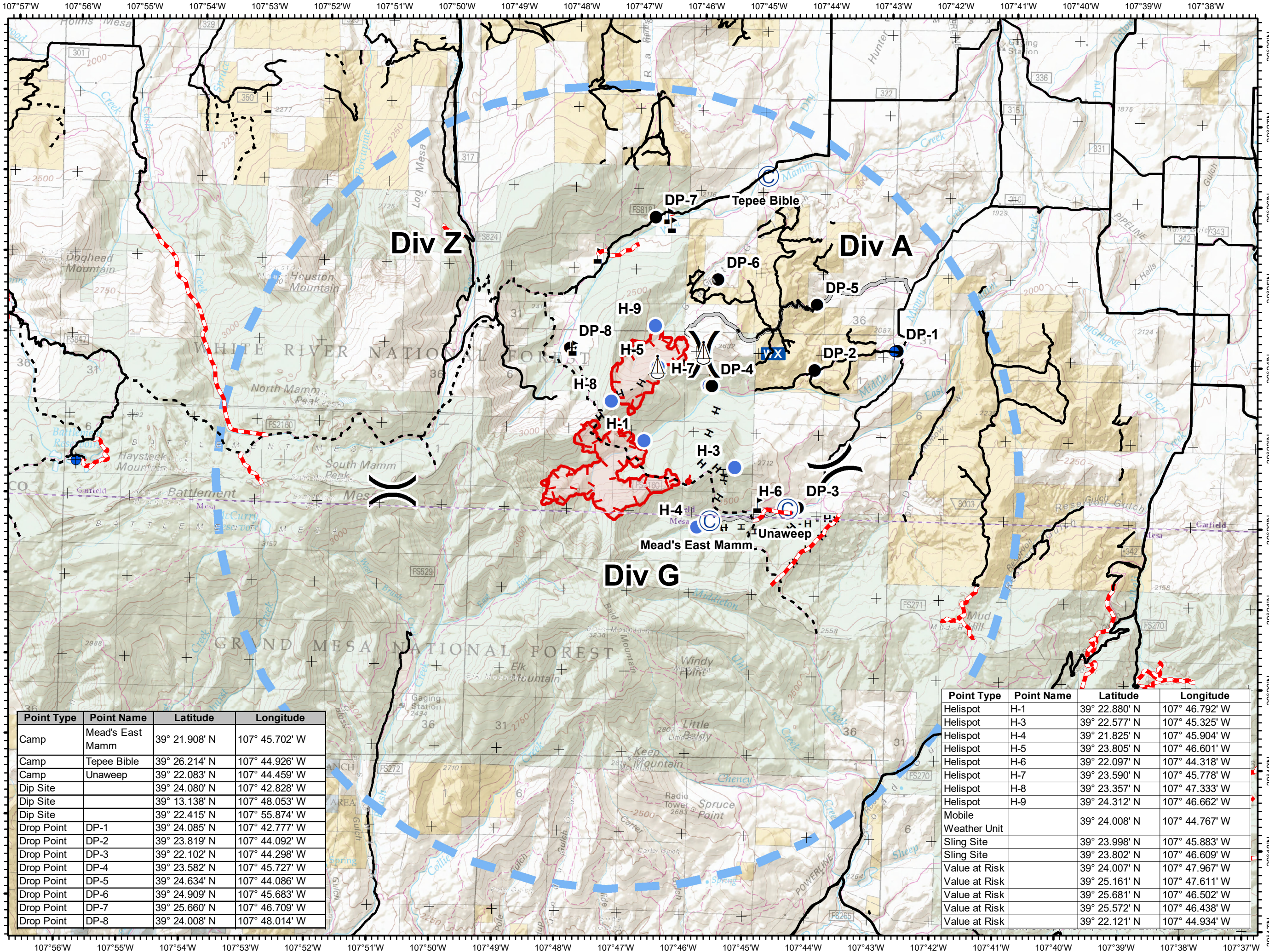
Appx 978 acres  
 As of 10/08/2019 @ 2330 hrs



- Roads
- Trails
- Roads Under Permit or Decommissioned, Access may be limited
- Camp
- Dip Site
- Drop Point
- Helispot
- Mobile Weather Unit
- Sling Site
- Value at Risk
- Division Break
- Uncontrolled Fire Edge
- Completed Hand Line
- Access or Improved Road
- Temporary Flight Restriction
- Wildfire Daily Fire Perimeter



S. McCormick | 10/09/2019  
 Acres from IR  
 and field reports  
 NAD 83, UTM 13 N



Point Type	Point Name	Latitude	Longitude
Camp	Mead's East Mamm	39° 21.908' N	107° 45.702' W
Camp	Tepee Bible	39° 26.214' N	107° 44.926' W
Camp	UnawEEP	39° 22.083' N	107° 44.459' W
Dip Site		39° 24.080' N	107° 42.828' W
Dip Site		39° 13.138' N	107° 48.053' W
Dip Site		39° 22.415' N	107° 55.874' W
Drop Point	DP-1	39° 24.085' N	107° 42.777' W
Drop Point	DP-2	39° 23.819' N	107° 44.092' W
Drop Point	DP-3	39° 22.102' N	107° 44.298' W
Drop Point	DP-4	39° 23.582' N	107° 45.727' W
Drop Point	DP-5	39° 24.634' N	107° 44.086' W
Drop Point	DP-6	39° 24.909' N	107° 45.683' W
Drop Point	DP-7	39° 25.660' N	107° 46.709' W
Drop Point	DP-8	39° 24.008' N	107° 48.014' W

Point Type	Point Name	Latitude	Longitude
Helispot	H-1	39° 22.880' N	107° 46.792' W
Helispot	H-3	39° 22.577' N	107° 45.325' W
Helispot	H-4	39° 21.825' N	107° 45.904' W
Helispot	H-5	39° 23.805' N	107° 46.601' W
Helispot	H-6	39° 22.097' N	107° 44.318' W
Helispot	H-7	39° 23.590' N	107° 45.778' W
Helispot	H-8	39° 23.357' N	107° 47.333' W
Helispot	H-9	39° 24.312' N	107° 46.662' W
Mobile Weather Unit		39° 24.008' N	107° 44.767' W
Sling Site		39° 23.998' N	107° 45.883' W
Sling Site		39° 23.802' N	107° 46.609' W
Value at Risk		39° 24.007' N	107° 47.967' W
Value at Risk		39° 25.161' N	107° 47.611' W
Value at Risk		39° 25.681' N	107° 46.502' W
Value at Risk		39° 25.572' N	107° 46.438' W
Value at Risk		39° 22.121' N	107° 44.934' W