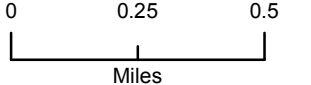
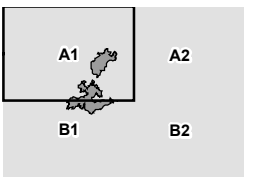


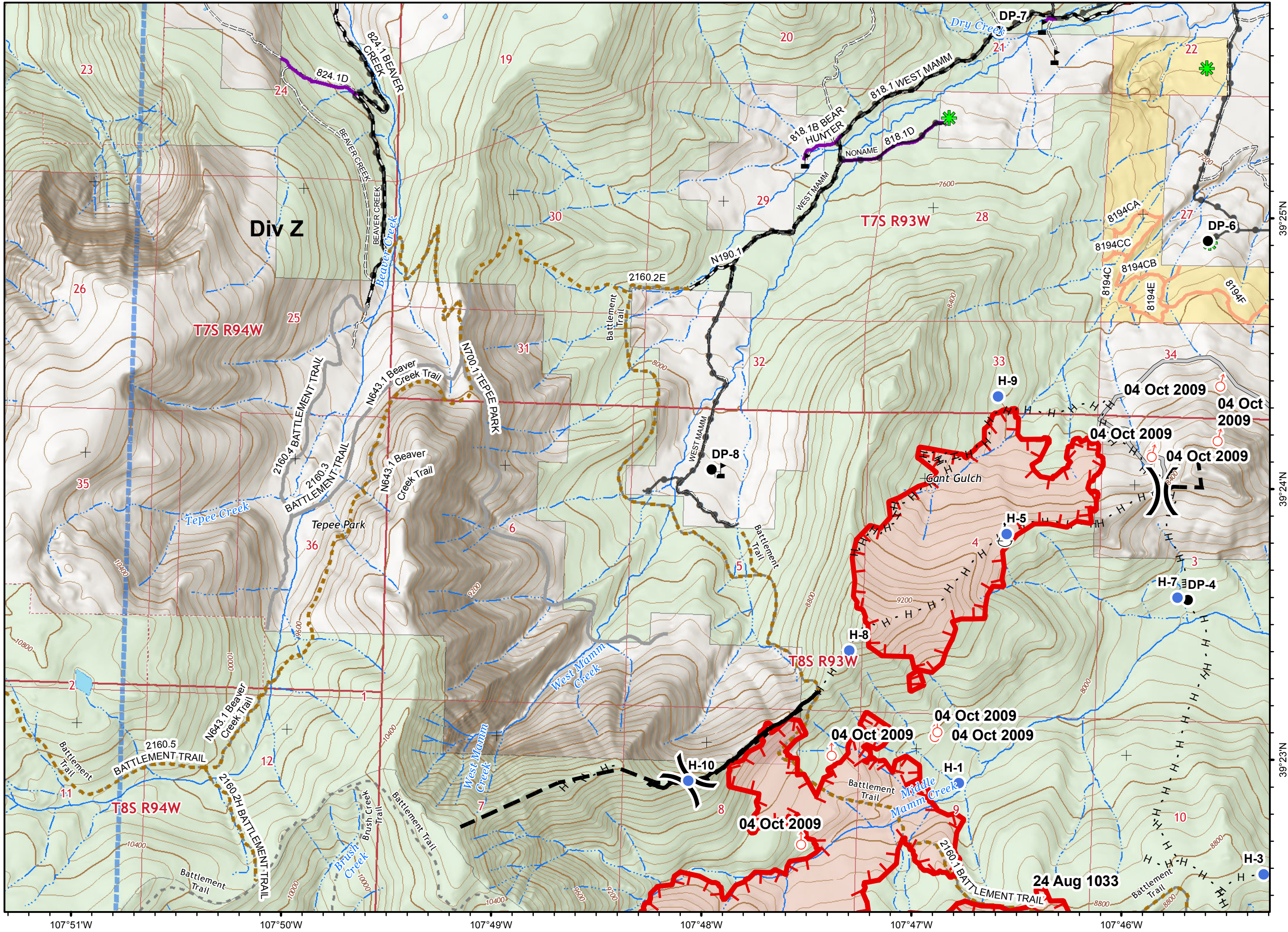
IAP Map
Middle Mamm Fire
CO-WRF-161
11 Oct 2019 Day



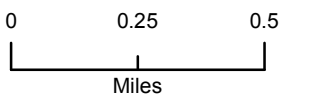
Page: A1



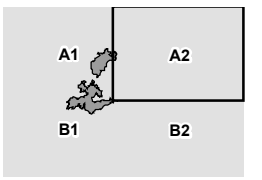
- Drop Point
- Helispot
- Sling Site
- Spot Fire
- Value at Risk
- Division Break
- Uncontrolled Fire Edge
- Completed Line
- Completed Hand Line
- Access or Improved Road
- Planned Fire Line
- Oil well pads
- Oil/gas pipeline
- Roads open to all vehicles
- Roads open to full-size vehicles and street-legal motorcycles
- Trails open to horses, other pack animals, and hikers
- Roads and trails managed under special use permit (closed to public)
- Other
- Open for Administrative Purposes Only
- Local Roads
- Fire area
- Planning Area
- BLM
- Private
- USFS



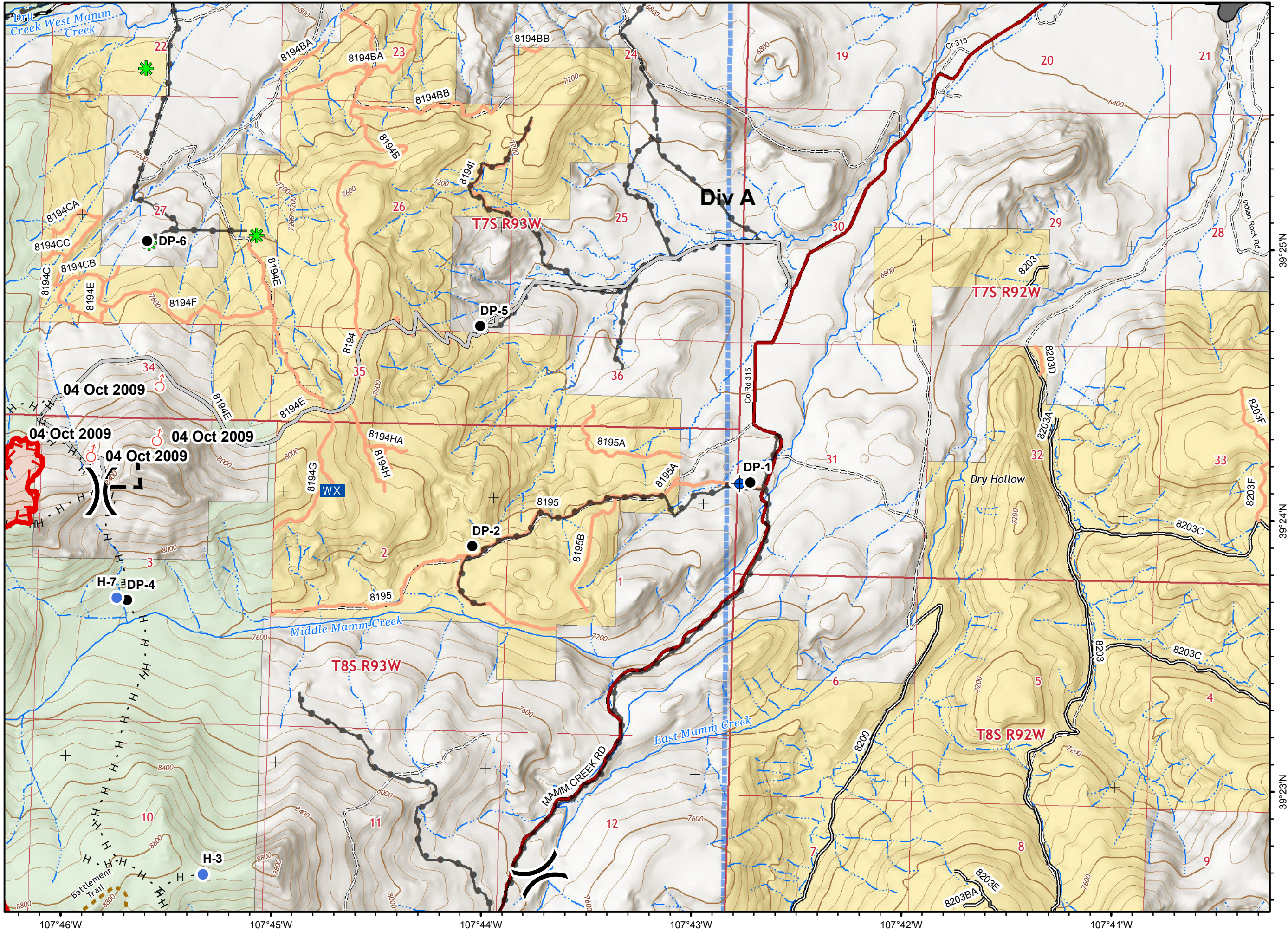
IAP Map
Middle Mamm Fire
CO-WRF-161
11 Oct 2019 Day



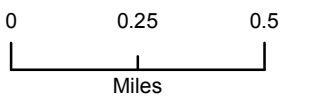
Page: A2



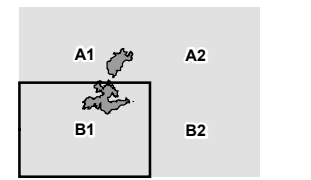
- Dip Site
- Drop Point
- Helispot
- Mobile Weather Unit
- Sling Site
- Spot Fire
- Division Break
- Uncontrolled Fire Edge
- Completed Hand Line
- Access or Improved Road
- Planned Fire Line
- Oil well pads
- Oil/gas pipeline
- Roads open to all vehicles
- Roads open to full-size vehicles and street-legal motorcycles
- Trails open to horses, other pack animals, and hikers
- Open for Administrative Purposes Only
- Open to all Modes of Transportation
- Local Roads
- Major Roads
- Fire area
- Planning Area
- BLM
- Private
- USFS



IAP Map
Middle Mamm Fire
CO-WRF-161
11 Oct 2019 Day

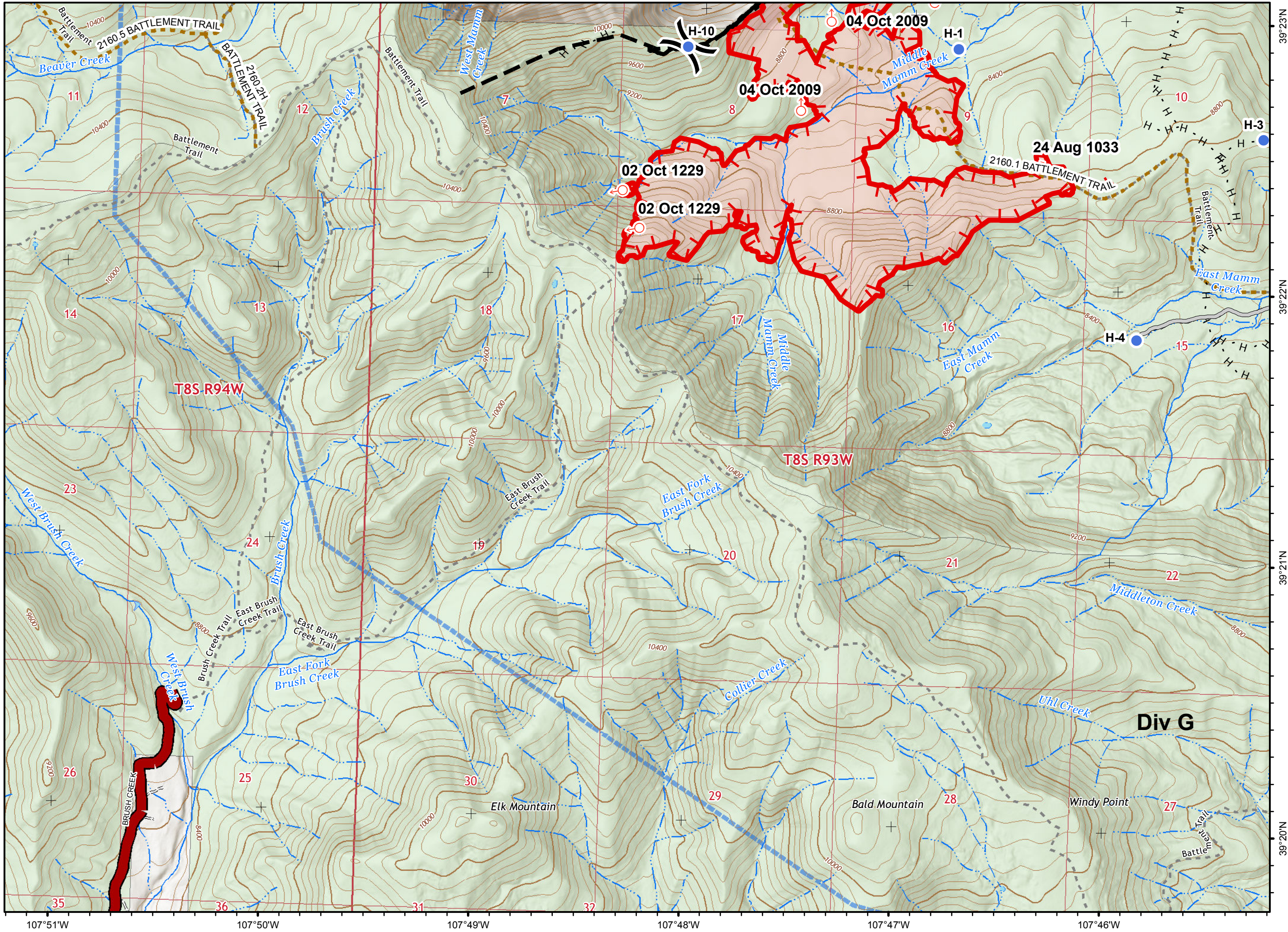


Page: B1



- Helispot
- Spot Fire
- Division Break

- Uncontrolled Fire Edge
- Completed Line
- Completed Hand Line
- Access or Improved Road
- Planned Fire Line
- Trails open to horses, other pack animals, and hikers
- Fire area
- Planning Area
- Private
- USFS



107°51'W 107°50'W 107°49'W 107°48'W 107°47'W 107°46'W

39°23'N
39°22'N
39°21'N
39°20'N

Div G

T8S R94W

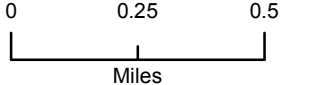
T8S R93W

Elk Mountain

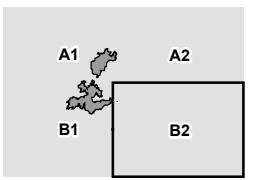
Bald Mountain

Windy Point

IAP Map
Middle Mamm Fire
CO-WRF-161
11 Oct 2019 Day

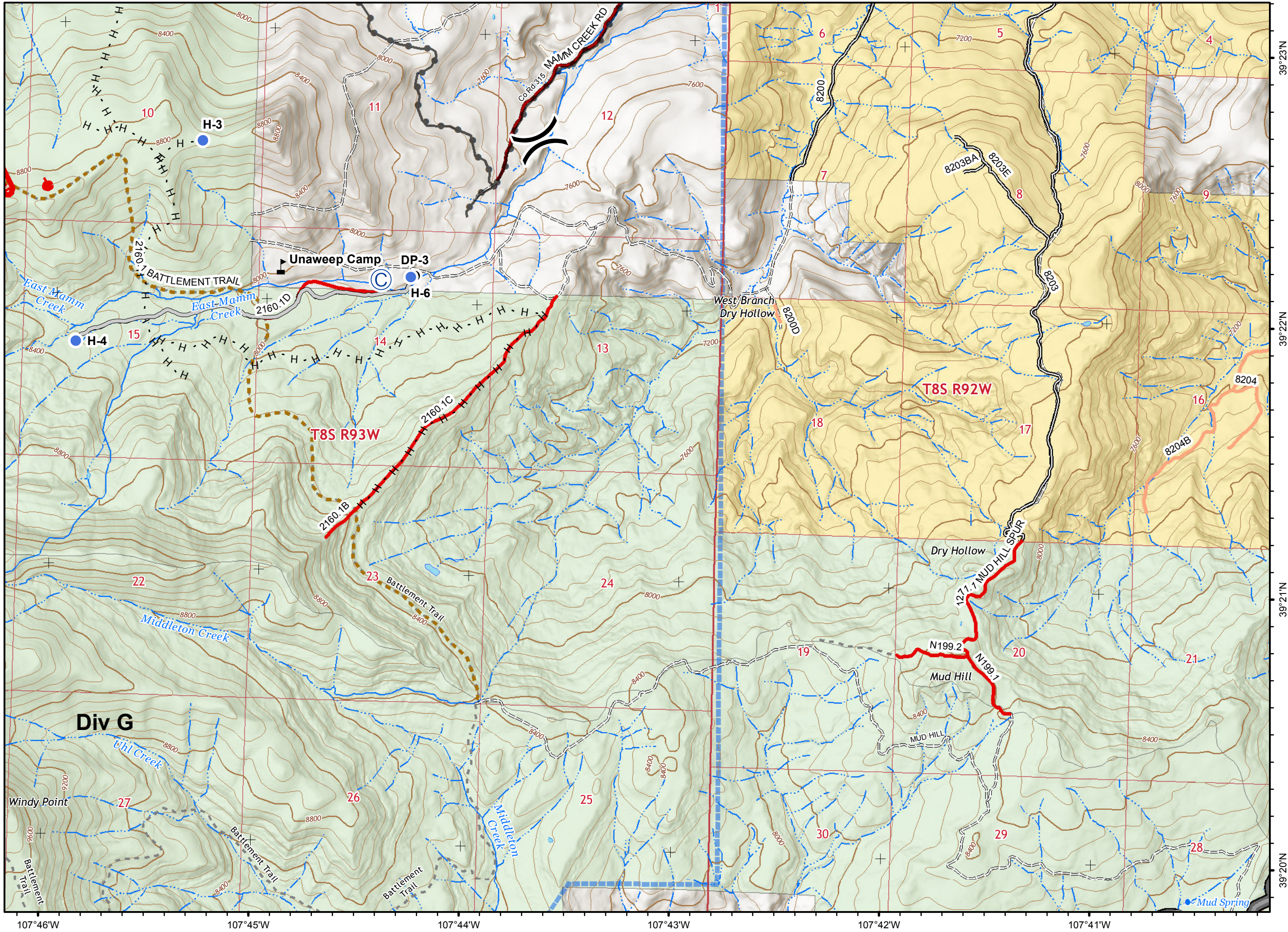


Page: B2



- Camp
- Drop Point
- Helispot
- Value at Risk
- Division Break

- Uncontrolled Fire Edge
- Completed Hand Line
- Access or Improved Road
- Oil/gas pipeline
- Trails open to horses, other pack animals, and hikers
- Other
- Decommissioned
- Open for Administrative Purposes Only
- Open to all Modes of Transportation
- Local Roads
- Fire area
- Planning Area
- BLM
- Private
- USFS



107°46'W 107°45'W 107°44'W 107°43'W 107°42'W 107°41'W

39°23'N
39°22'N
39°21'N
39°20'N