

**Air Operations Map**  
**Middle Mamm Fire**  
**CO-WRF-000161**  
**10/11/2019**

Appx 1001 acres  
 As of 10/09/2019 @ 2014 hrs



- Roads
- Trails
- Roads Under Permit or Decommissioned, Access may be limited
- Camp
- Dip Site
- Drop Point
- Helispot
- Mobile Weather Unit
- Sling Site
- Value at Risk
- Division Break

Uncontrolled Fire Edge

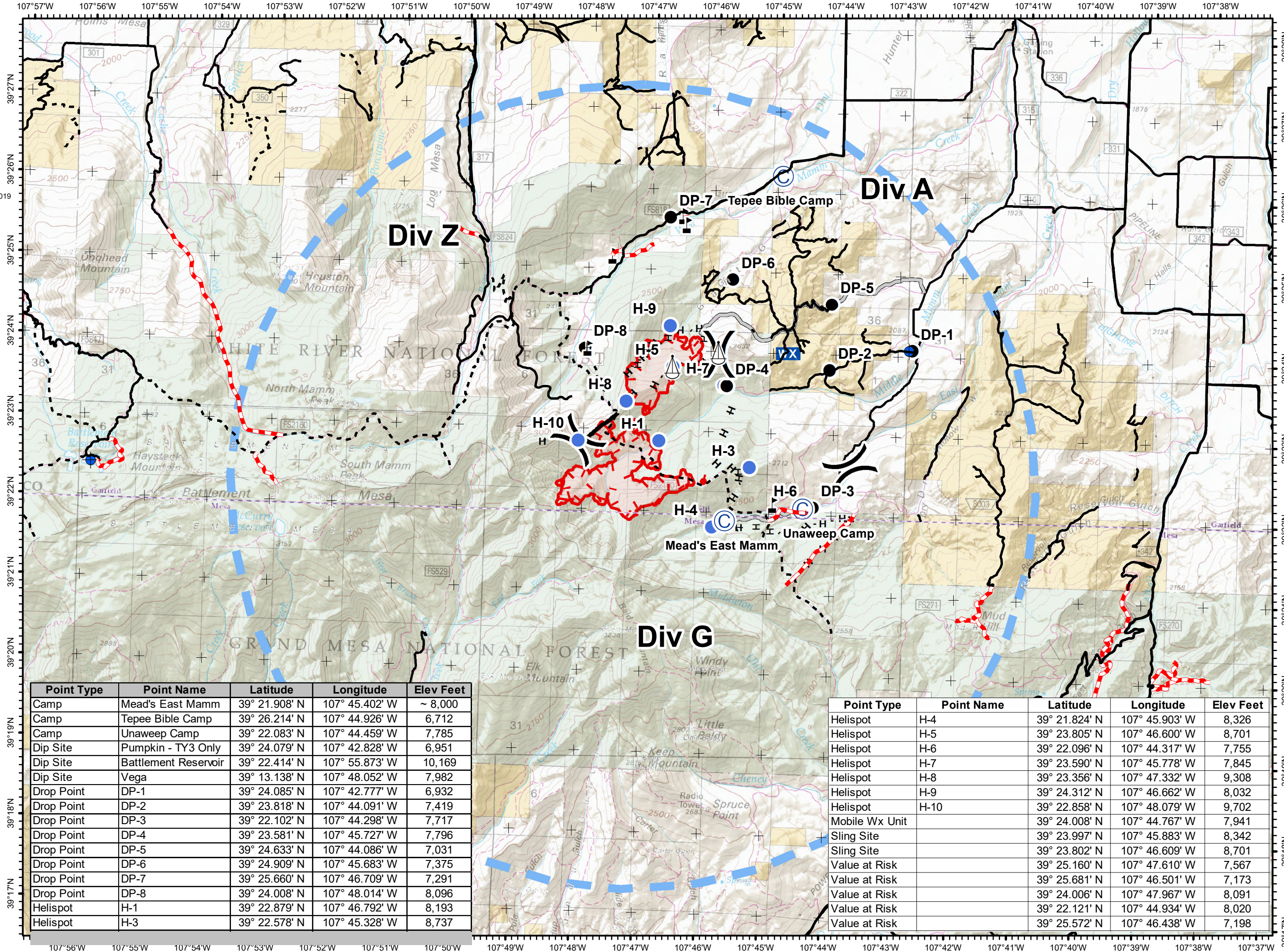
Completed Line

Completed Hand Line

Access or Improved Road

Wildfire Daily Fire Perimeter

Temporary Flight Restriction



Point Type	Point Name	Latitude	Longitude	Elev Feet
Camp	Mead's East Mamm	39° 21.908' N	107° 45.402' W	~ 8,000
Camp	Tepee Bible Camp	39° 26.214' N	107° 44.926' W	6,712
Camp	Unaweep Camp	39° 22.083' N	107° 44.459' W	7,785
Dip Site	Pumpkin - TY3 Only	39° 24.079' N	107° 42.828' W	6,951
Dip Site	Battlement Reservoir	39° 22.414' N	107° 55.873' W	10,169
Dip Site	Vega	39° 13.138' N	107° 48.052' W	7,982
Drop Point	DP-1	39° 24.085' N	107° 42.777' W	6,932
Drop Point	DP-2	39° 23.818' N	107° 44.091' W	7,419
Drop Point	DP-3	39° 22.102' N	107° 44.298' W	7,717
Drop Point	DP-4	39° 23.581' N	107° 45.727' W	7,796
Drop Point	DP-5	39° 24.633' N	107° 44.086' W	7,031
Drop Point	DP-6	39° 24.909' N	107° 45.683' W	7,375
Drop Point	DP-7	39° 25.660' N	107° 46.709' W	7,291
Drop Point	DP-8	39° 24.008' N	107° 48.014' W	8,096
Helispot	H-1	39° 22.879' N	107° 46.792' W	8,193
Helispot	H-3	39° 22.578' N	107° 45.328' W	8,737

Point Type	Point Name	Latitude	Longitude	Elev Feet
Helispot	H-4	39° 21.824' N	107° 45.903' W	8,326
Helispot	H-5	39° 23.805' N	107° 46.600' W	8,701
Helispot	H-6	39° 22.096' N	107° 44.317' W	7,755
Helispot	H-7	39° 23.590' N	107° 45.778' W	7,845
Helispot	H-8	39° 23.356' N	107° 47.332' W	9,308
Helispot	H-9	39° 24.312' N	107° 46.662' W	8,032
Helispot	H-10	39° 22.858' N	107° 48.079' W	9,702
Mobile Wx Unit		39° 24.008' N	107° 44.767' W	7,941
Sling Site		39° 23.997' N	107° 45.883' W	8,342
Sling Site		39° 23.802' N	107° 46.609' W	8,701
Value at Risk		39° 25.160' N	107° 47.610' W	7,567
Value at Risk		39° 25.681' N	107° 46.501' W	7,173
Value at Risk		39° 24.006' N	107° 47.967' W	8,091
Value at Risk		39° 22.121' N	107° 44.934' W	8,020
Value at Risk		39° 25.572' N	107° 46.438' W	7,198