

Air Operations Map

Middle Mamm Fire

CO-WRF-000161

10/11/2019

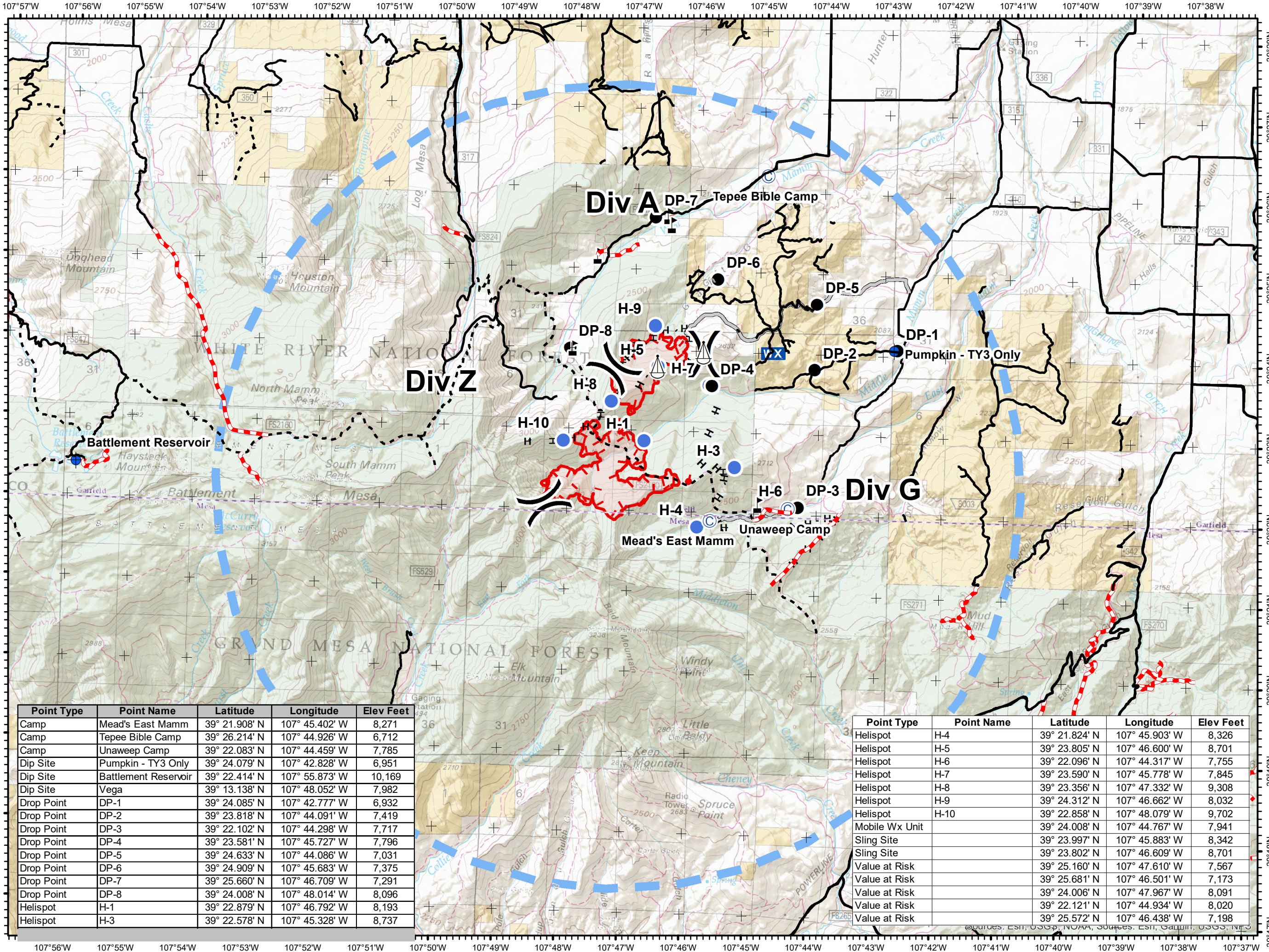
Appx 1007 acres
As of 10/10/2019 @ 1957 hrs



- Roads
- Trails
- Roads Under Permit or Decommissioned, Access may be limited
- Camp
- Dip Site
- Drop Point
- Helispot
- Mobile Weather Unit
- Sling Site
- Value at Risk
- Division Break
- Uncontrolled Fire Edge
- Completed Hand Line
- Access or Improved Road
- Temporary Flight Restriction
- Wildfire Daily Fire Perimeter



S. McCormick | 10/11/2019
Acres from IR and field reports
NAD 83, UTM 13 N



Point Type	Point Name	Latitude	Longitude	Elev Feet
Camp	Mead's East Mamm	39° 21.908' N	107° 45.402' W	8,271
Camp	Tepee Bible Camp	39° 26.214' N	107° 44.926' W	6,712
Camp	Unaweep Camp	39° 22.083' N	107° 44.459' W	7,785
Dip Site	Pumpkin - TY3 Only	39° 24.079' N	107° 42.828' W	6,951
Dip Site	Battlement Reservoir	39° 22.414' N	107° 55.873' W	10,169
Dip Site	Vega	39° 13.138' N	107° 48.052' W	7,982
Drop Point	DP-1	39° 24.085' N	107° 42.777' W	6,932
Drop Point	DP-2	39° 23.818' N	107° 44.091' W	7,419
Drop Point	DP-3	39° 22.102' N	107° 44.298' W	7,717
Drop Point	DP-4	39° 23.581' N	107° 45.727' W	7,796
Drop Point	DP-5	39° 24.633' N	107° 44.086' W	7,031
Drop Point	DP-6	39° 24.909' N	107° 45.683' W	7,375
Drop Point	DP-7	39° 25.660' N	107° 46.709' W	7,291
Drop Point	DP-8	39° 24.008' N	107° 48.014' W	8,096
Helispot	H-1	39° 22.879' N	107° 46.792' W	8,193
Helispot	H-3	39° 22.578' N	107° 45.328' W	8,737

Point Type	Point Name	Latitude	Longitude	Elev Feet
Helispot	H-4	39° 21.824' N	107° 45.903' W	8,326
Helispot	H-5	39° 23.805' N	107° 46.600' W	8,701
Helispot	H-6	39° 22.096' N	107° 44.317' W	7,755
Helispot	H-7	39° 23.590' N	107° 45.778' W	7,845
Helispot	H-8	39° 23.356' N	107° 47.332' W	9,308
Helispot	H-9	39° 24.312' N	107° 46.662' W	8,032
Helispot	H-10	39° 22.858' N	107° 48.079' W	9,702
Mobile Wx Unit		39° 24.008' N	107° 44.767' W	7,941
Sling Site		39° 23.997' N	107° 45.883' W	8,342
Sling Site		39° 23.802' N	107° 46.609' W	8,701
Value at Risk		39° 25.160' N	107° 47.610' W	7,567
Value at Risk		39° 25.681' N	107° 46.501' W	7,173
Value at Risk		39° 24.006' N	107° 47.967' W	8,091
Value at Risk		39° 22.121' N	107° 44.934' W	8,020
Value at Risk		39° 25.572' N	107° 46.438' W	7,198

Sources: Esri, USGS, NOAA, Sources: Esri, Garmin, USGS, NPS