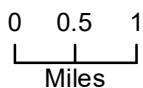


107°0'W 106°59'W 106°58'W 106°57'W 106°56'W 106°55'W 106°54'W 106°53'W 106°52'W 106°51'W 106°50'W 106°49'W 106°48'W 106°47'W 106°46'W 106°45'W 106°44'W 106°43'W 106°42'W

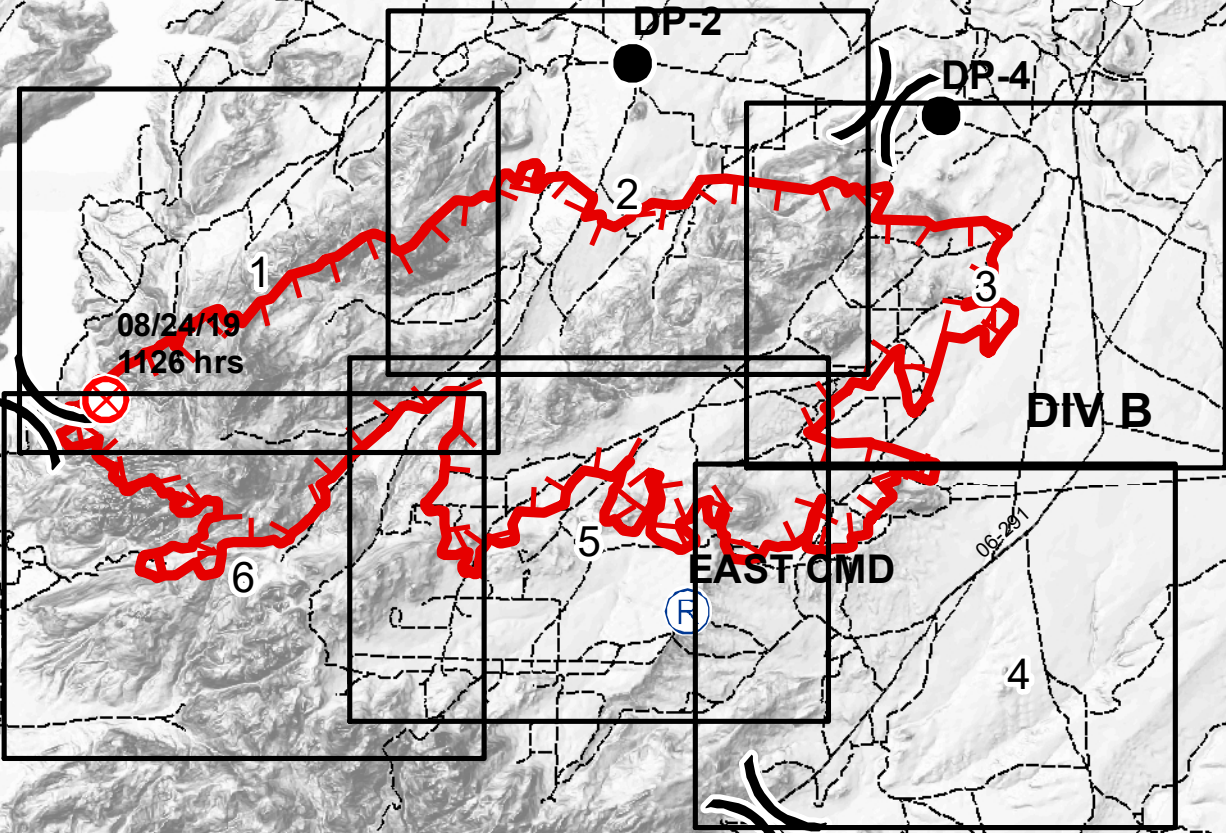
Pedro Mountain IAP MAP WY-RAD-019341 8/27/19

Appx. 9,386 acres
at 1100 hrs
on 8/26/19

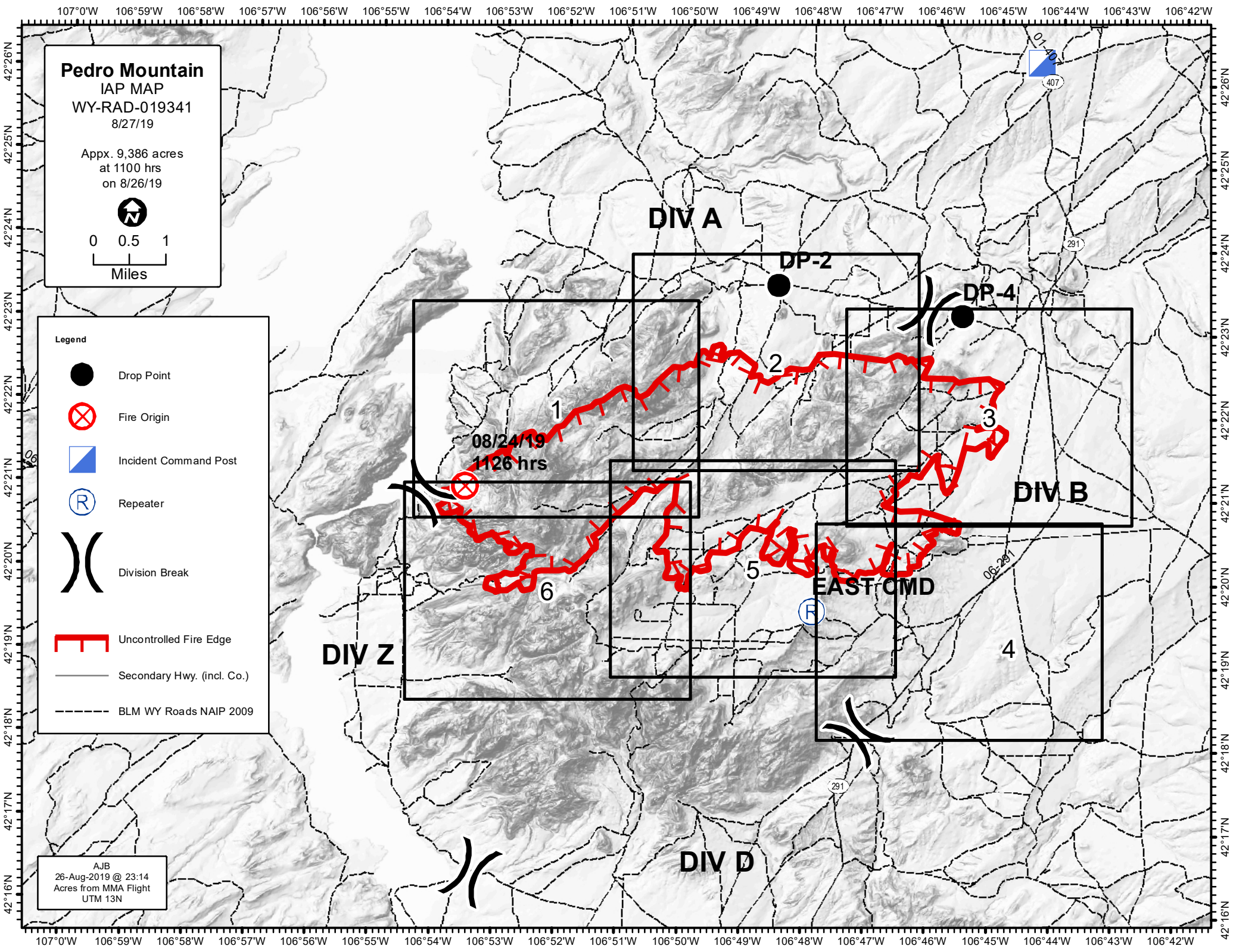


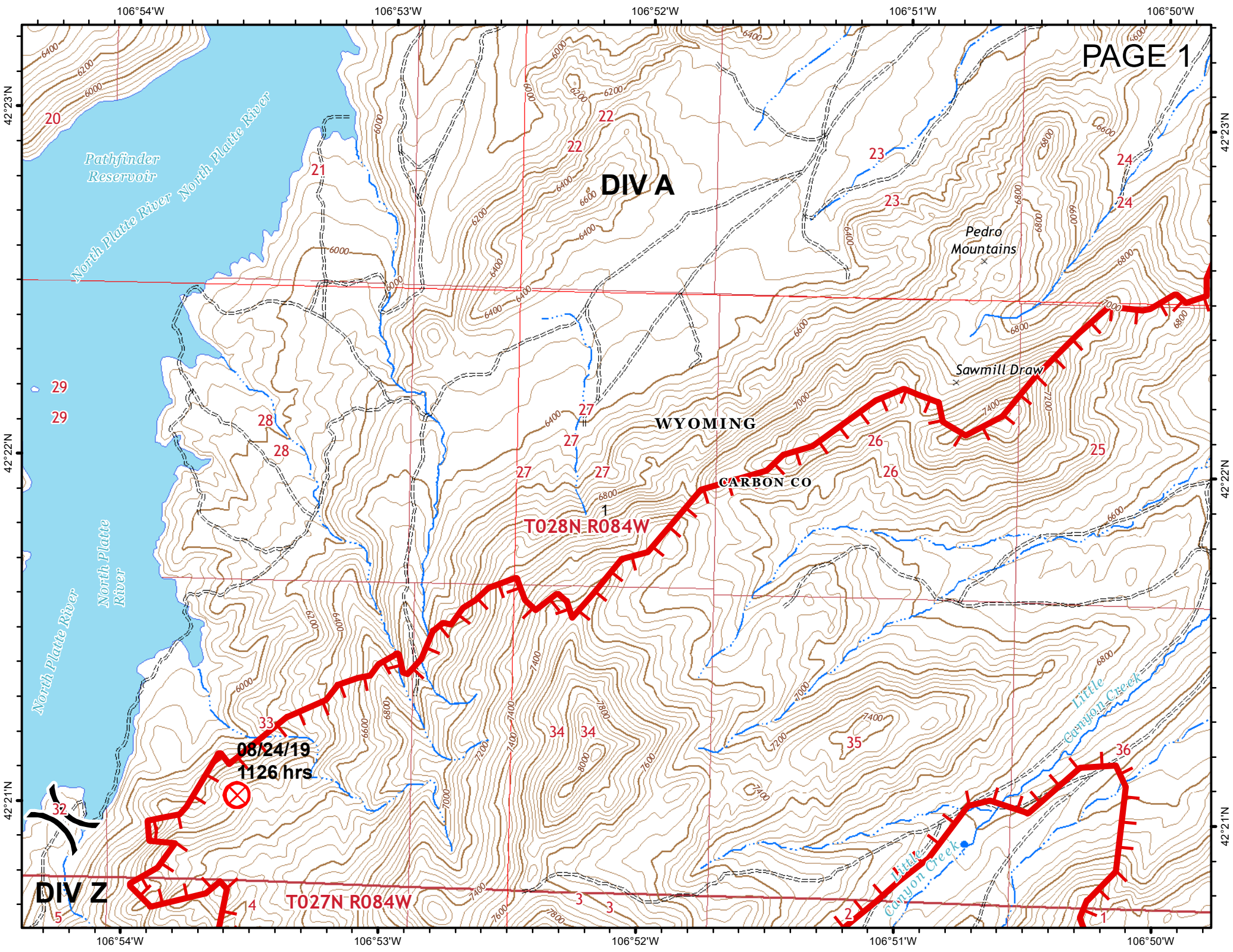
Legend

- Drop Point
- Fire Origin
- Incident Command Post
- Repeater
- Division Break
- Uncontrolled Fire Edge
- Secondary Hwy. (incl. Co.)
- BLM WY Roads NAIP 2009



AJB
26-Aug-2019 @ 23:14
Acres from MMA Flight
UTM 13N





DIV A

WYOMING

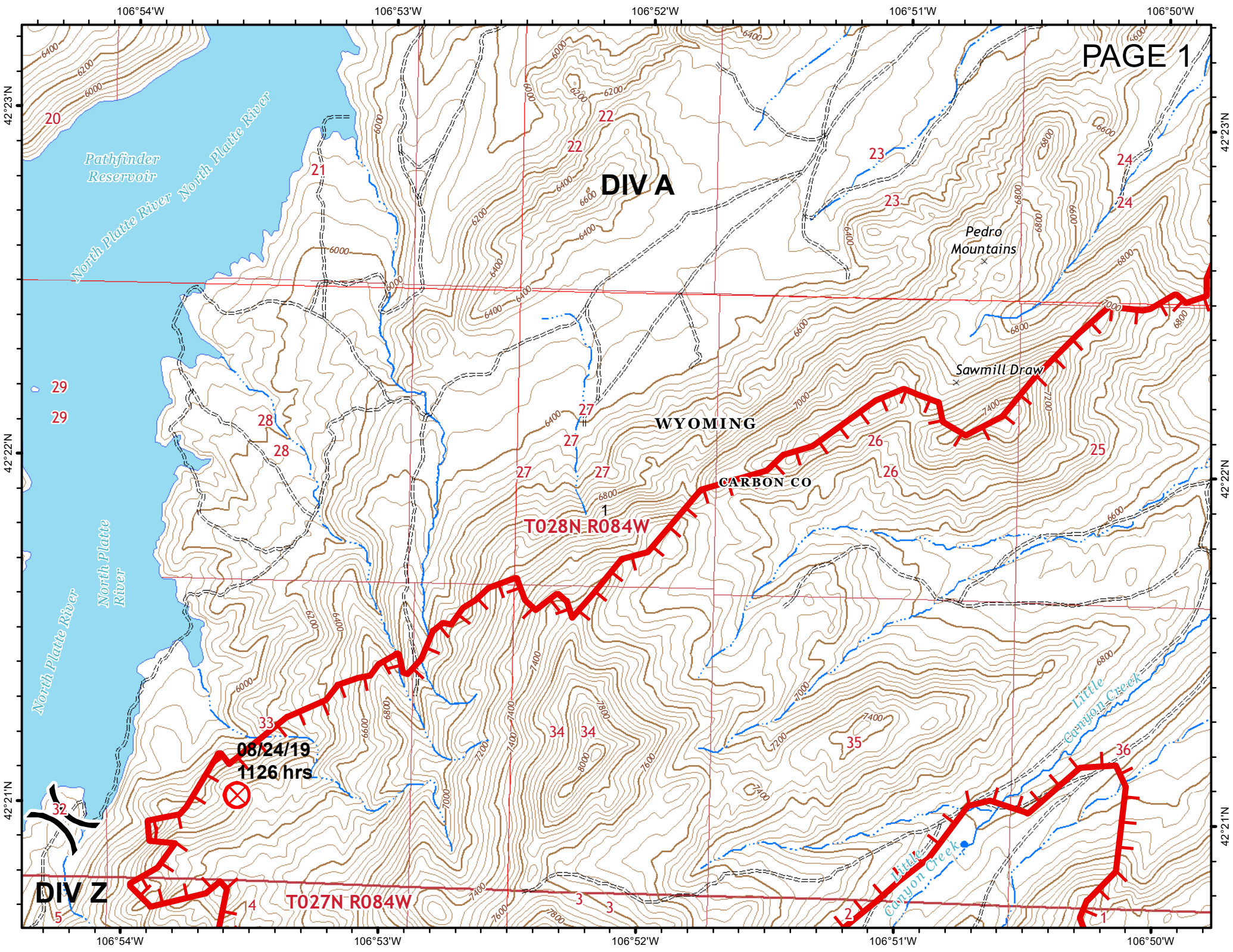
CARBON CO

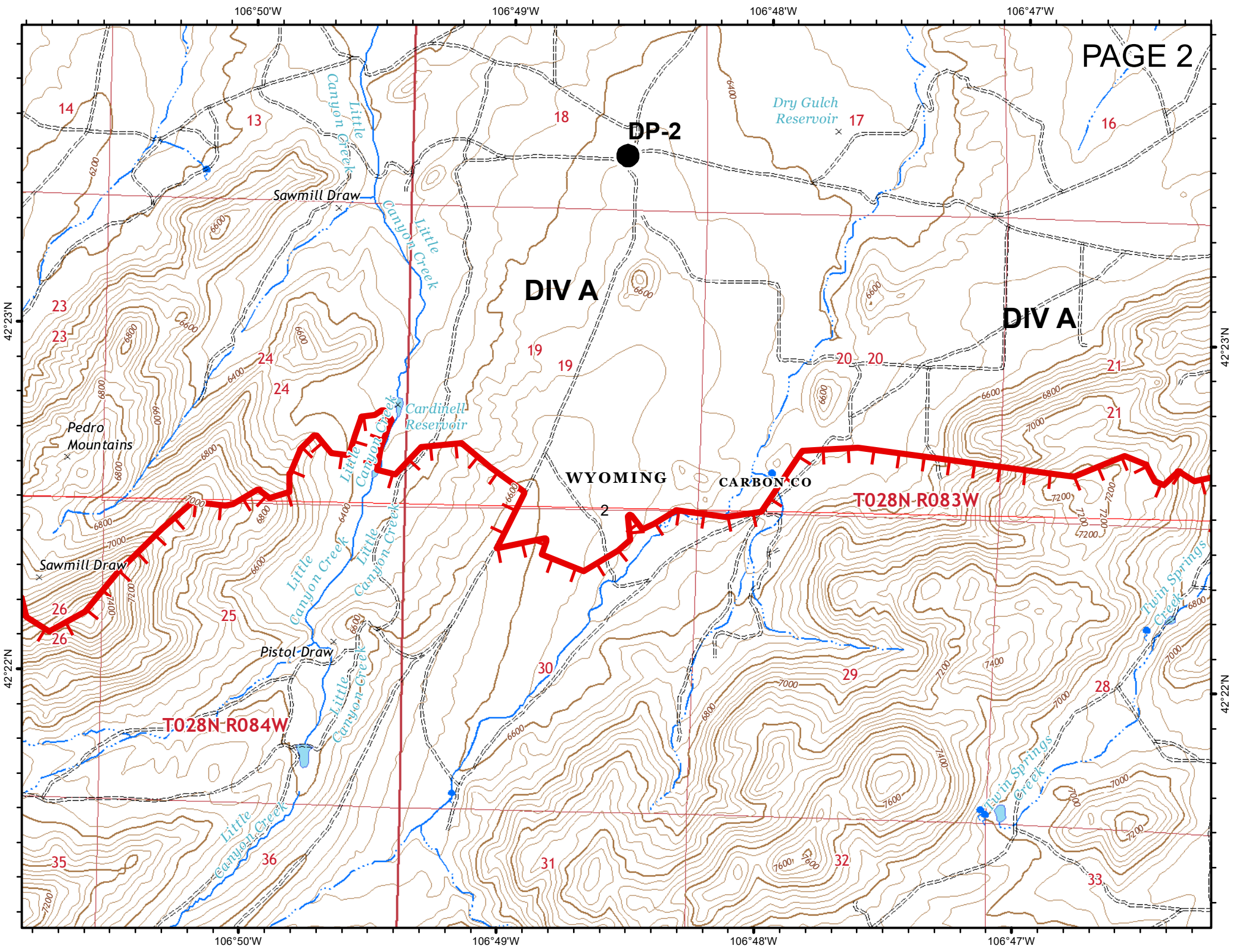
T028N R084W

T027N R084W

08/24/19
1126 hrs

DIV Z





106°47'W 106°46'W 106°45'W 106°44'W 106°43'W

DIV A

DP-4 ●

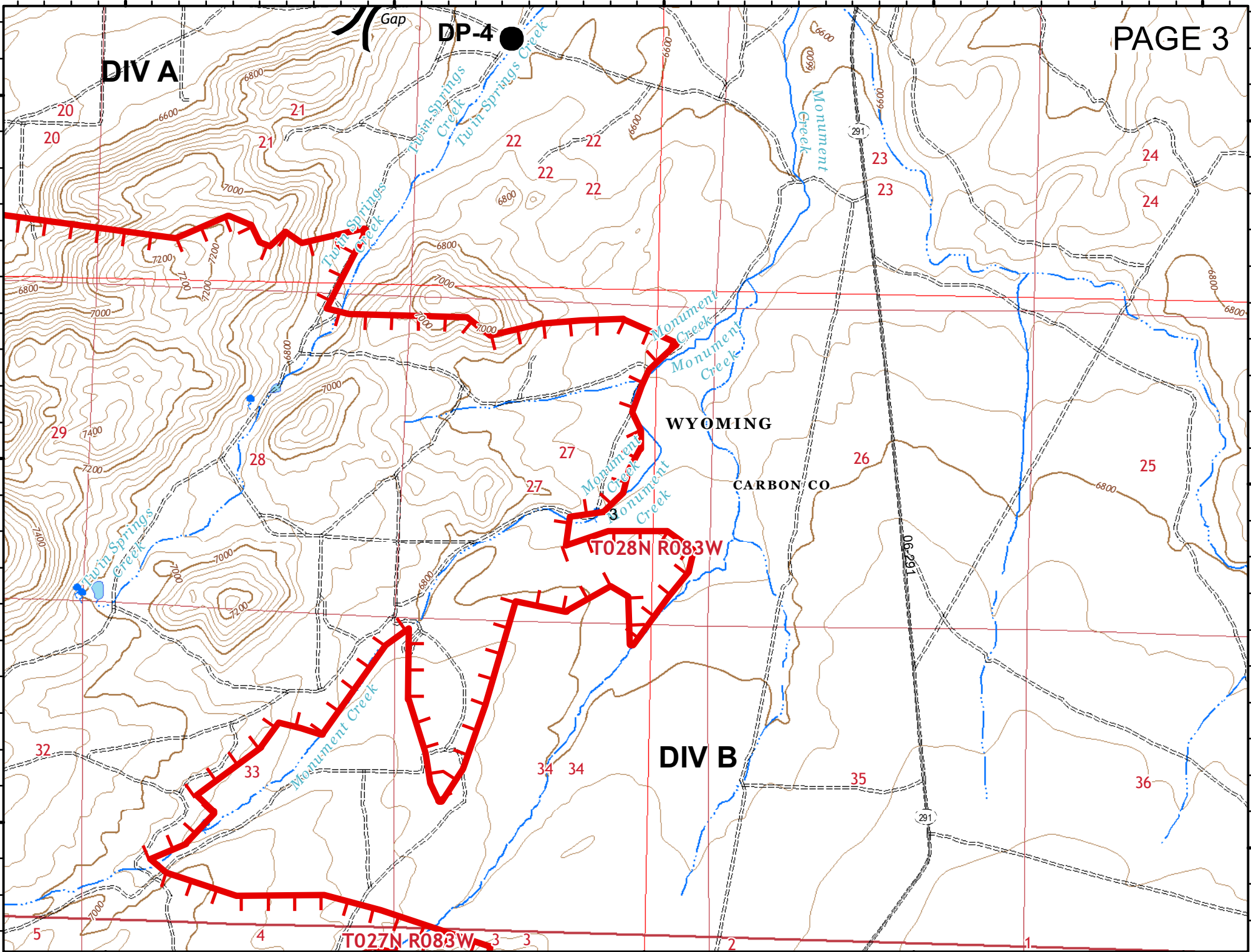
WYOMING

CARBON CO

DIV B

42°23'N
42°22'N
42°21'N

42°23'N
42°22'N
42°21'N



106°47'W 106°46'W 106°45'W 106°44'W 106°43'W

106°47'W

106°46'W

106°45'W

106°44'W

42°20'N

42°20'N

DIV B

T027N R083W

CARBON CO

WYOMING

DIV B

42°19'N

42°19'N

Indian Creek Reservoir

Irene Reservoir

42°18'N

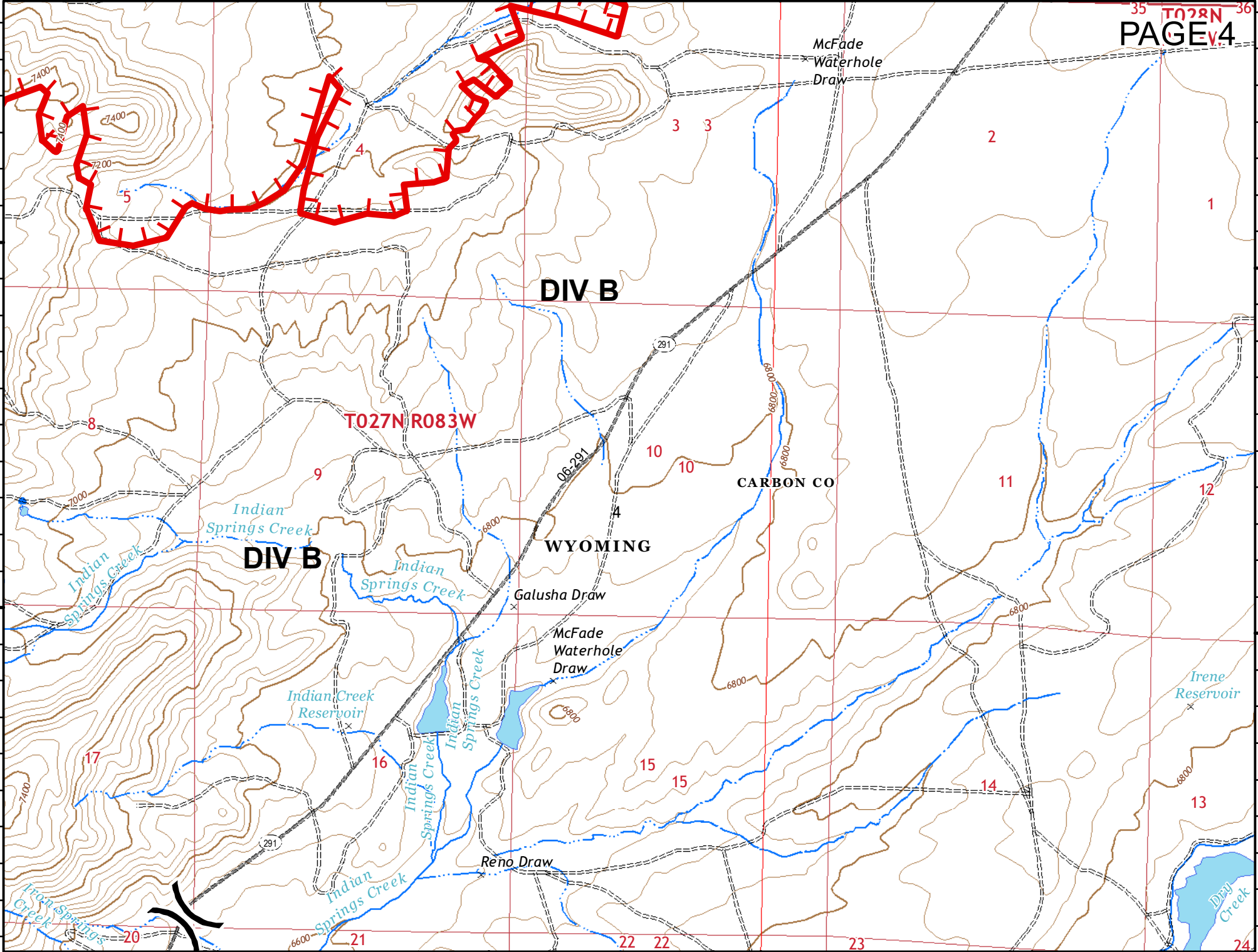
42°18'N

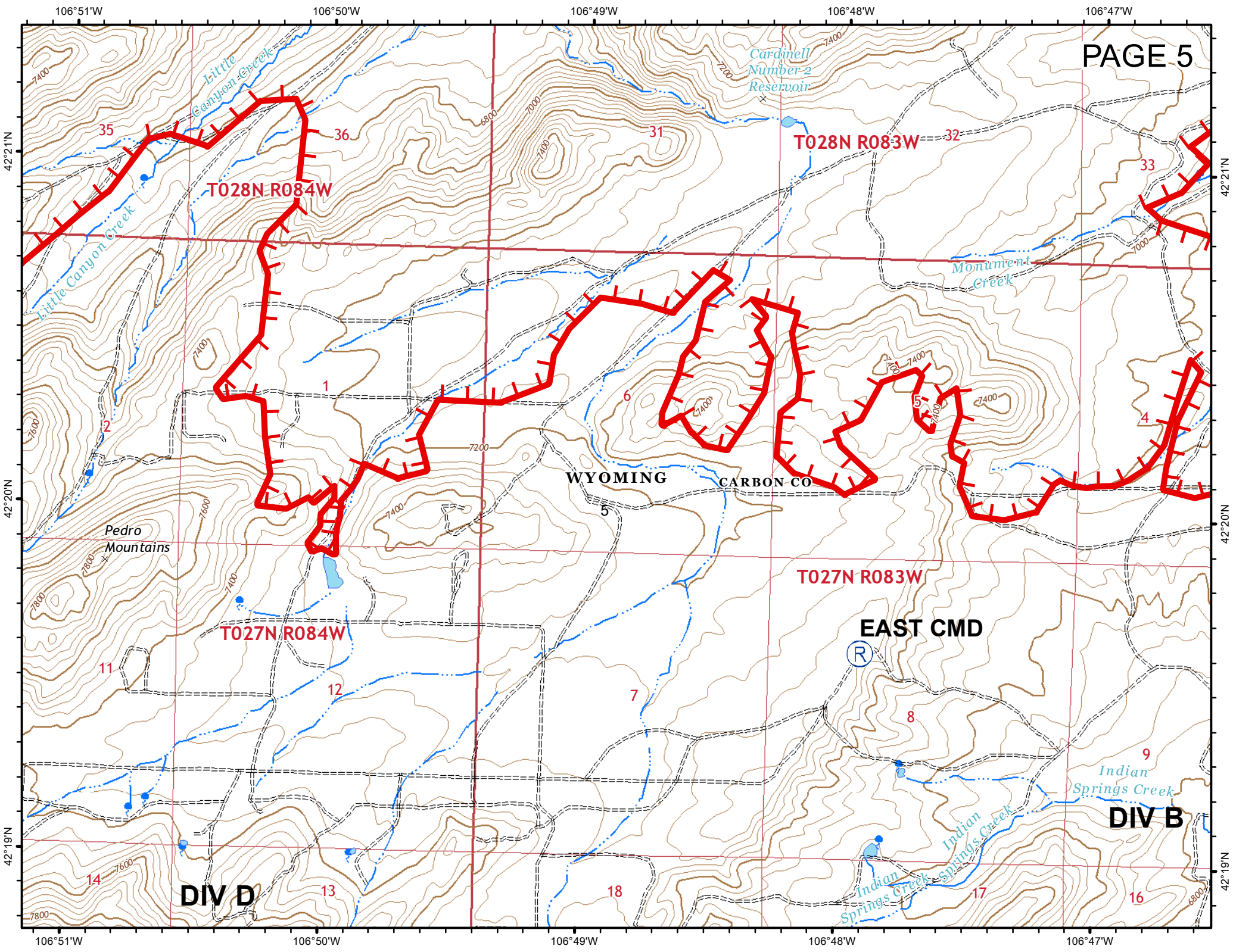
106°47'W

106°46'W

106°45'W

106°44'W





WYOMING

CARBON CO

T027N R083W

T028N R083W

T028N R084W

T027N R084W

EAST CMD

DIV D

DIV B

35

36

31

32

33

1

6

4

5

3

5

11

12

7

8

9

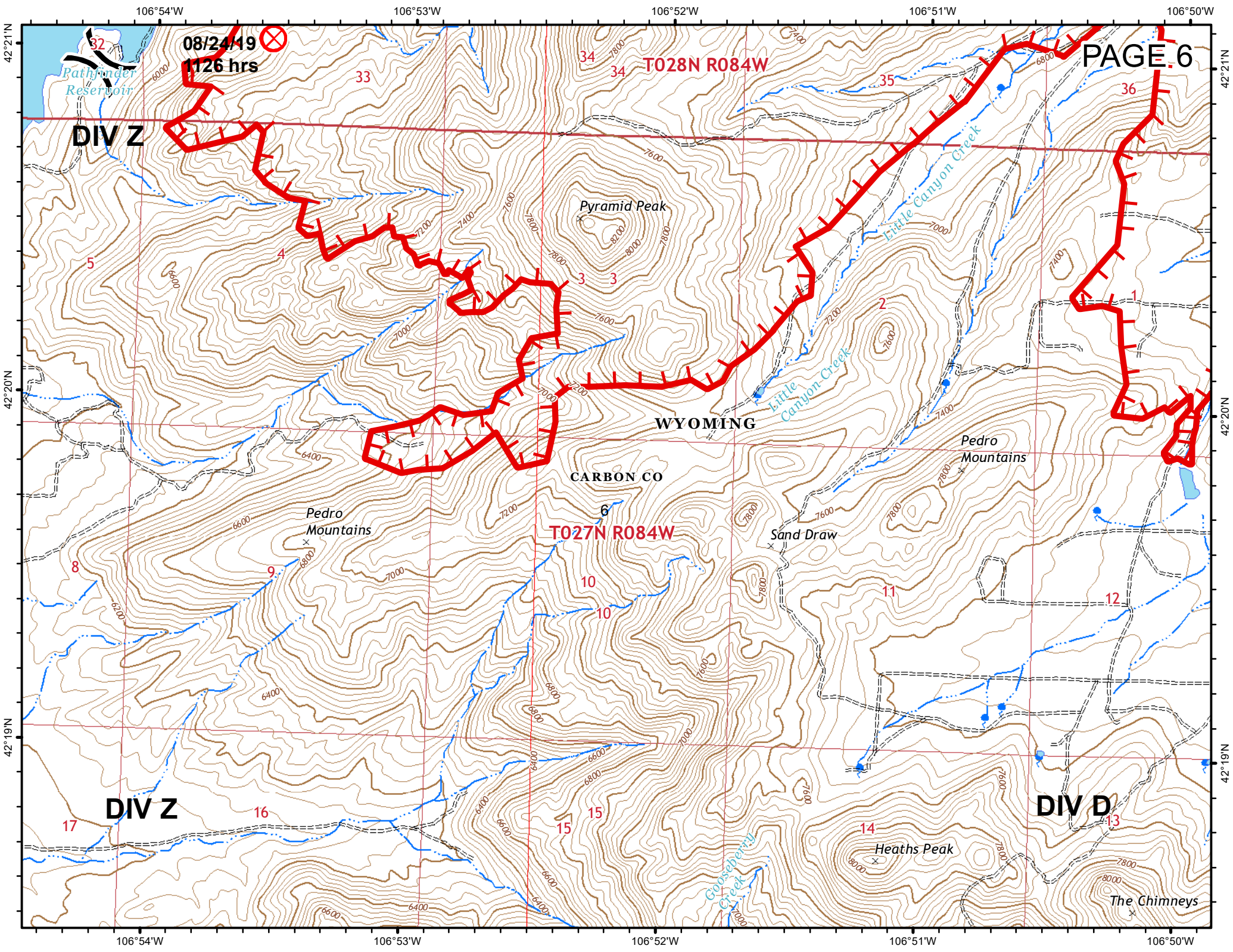
14

13

18

17

16



08/24/19
1126 hrs

DIV Z

WYOMING

CARBON CO

DIV Z

DIV D

T027N R084W

T028N R084W

17

16

15

15

14

13

8

9

10

10

11

12

4

3

3

2

1

32

33

34

34

35

36

Pyramid Peak

Pedro Mountains

Sand Draw

Heaths Peak

The Chimneys

Pathfinder Reservoir

Little Canyon Creek

Groesbecker Creek