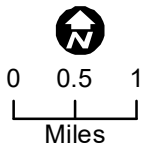


107°0'W 106°59'W 106°58'W 106°57'W 106°56'W 106°55'W 106°54'W 106°53'W 106°52'W 106°51'W 106°50'W 106°49'W 106°48'W 106°47'W 106°46'W 106°45'W 106°44'W 106°43'W 106°42'W

# Pedro Mountain IAP MAP WY-RAD-019341 8/28/19 Day

Appx. 10,255 acres  
at 1100 hrs  
on 8/27/19



- Drop Point
- Fire Origin
- Helibase
- Helispot
- Incident Command Post
- Repeater
- Water Source
- Value at Risk
- Division Break

- Uncontrolled Fire Edge
- Completed Line
- Secondary Hwy. (incl. Co.)
- BLM WY Roads NAIP 2009

**DIV Z**

**DIV A**

**DIV B**

**DIV C**

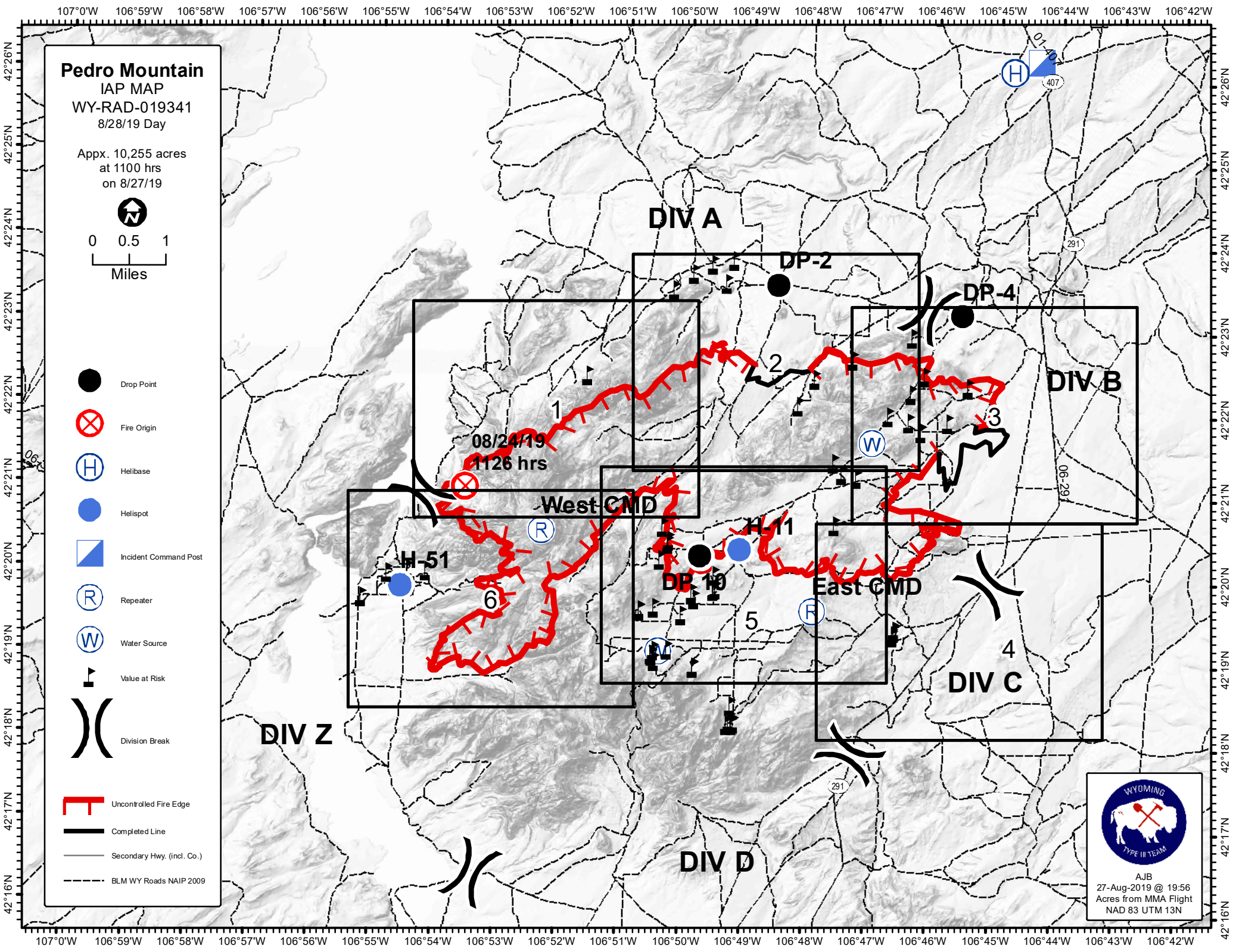
**DIV D**

**West CMD**

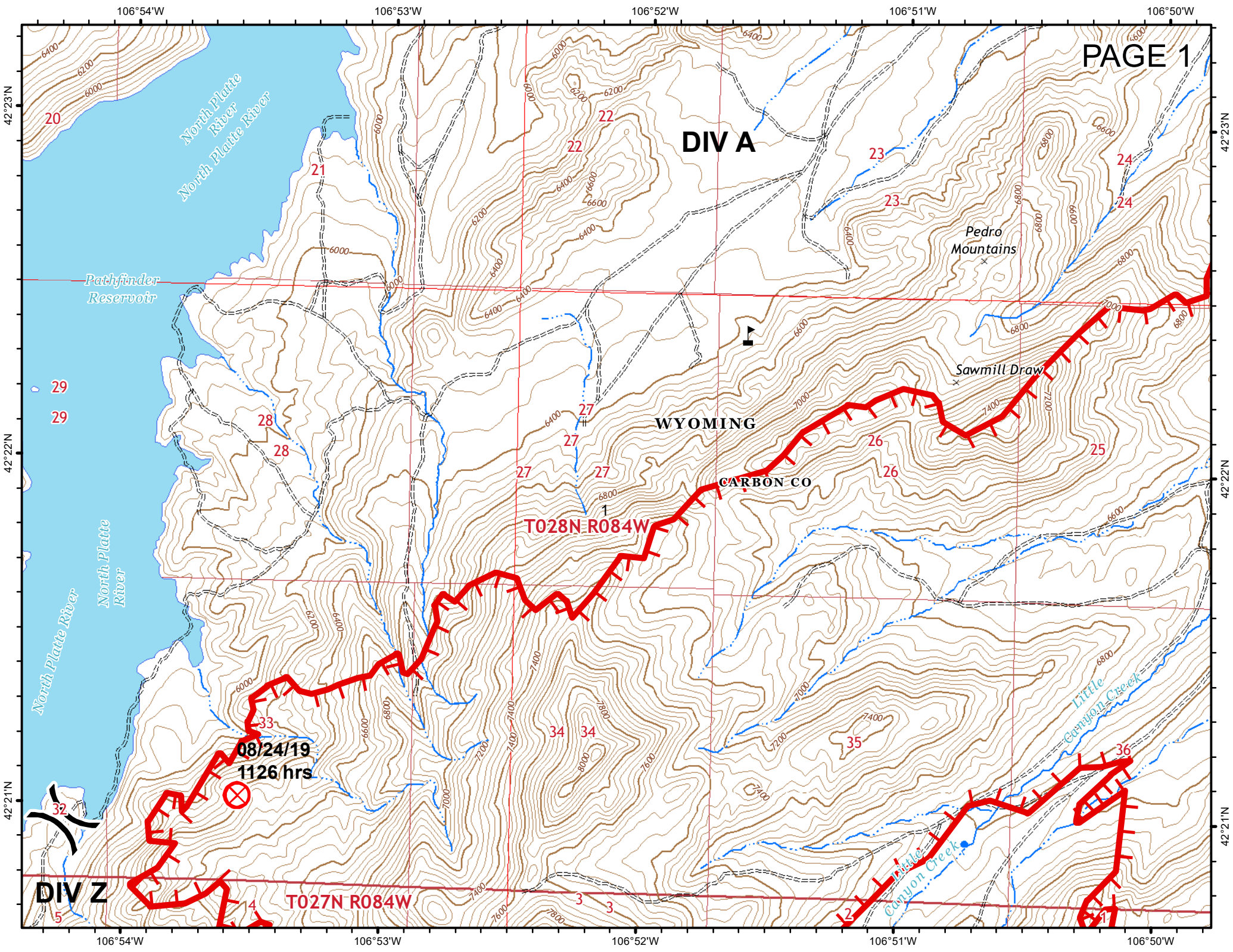
**East CMD**

08/24/19  
1126 hrs

AJB  
27-Aug-2019 @ 19:56  
Acres from MMA Flight  
NAD 83 UTM 13N







DIV A

WYOMING

CARBON CO

Pathfinder Reservoir

Pedro Mountains

Sawmill Draw

North Platte River

North Platte River

Little Canyon Creek

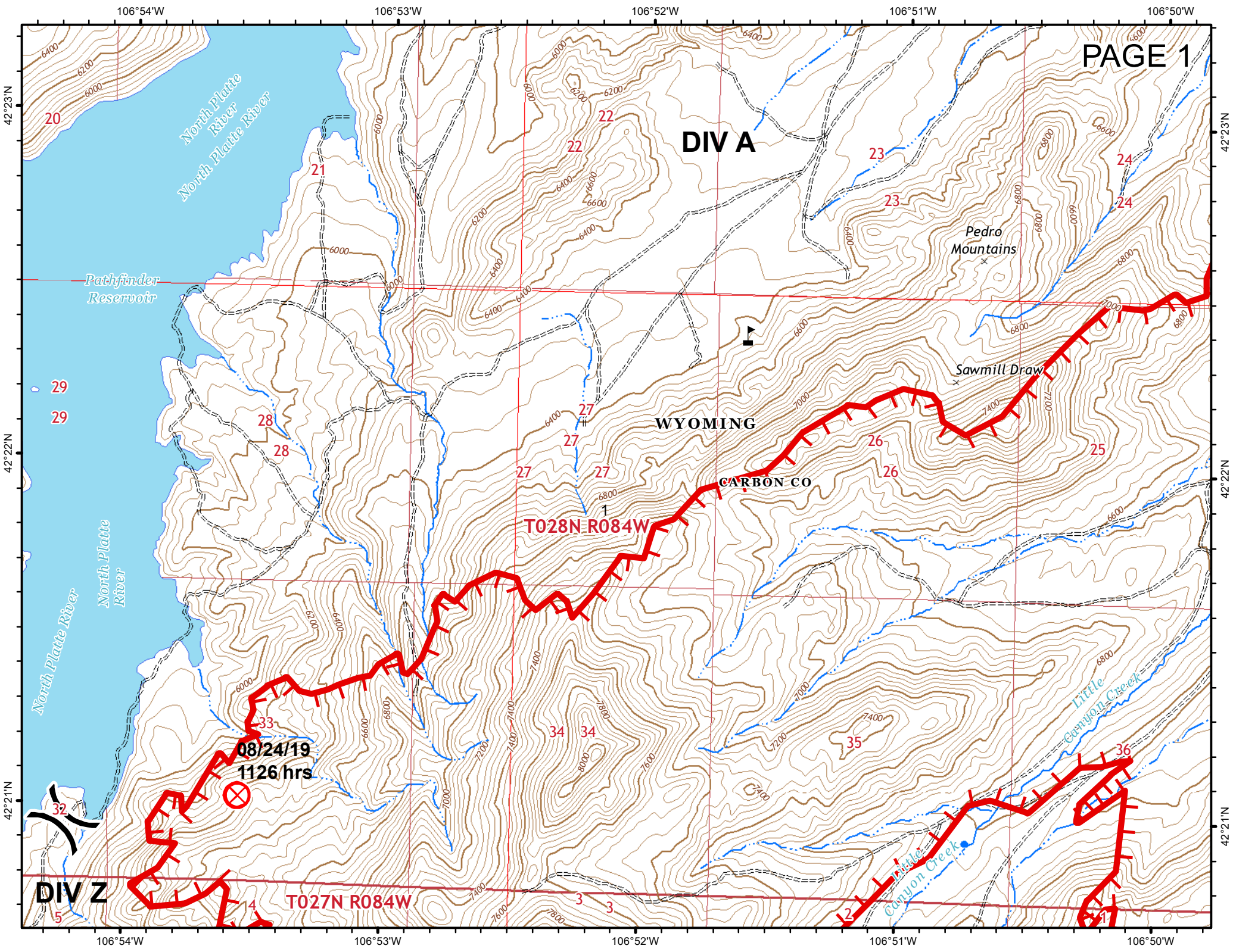
Little Canyon Creek

08/24/19  
1126 hrs

T028N R084W

T027N R084W

DIV Z



106°50'W

106°49'W

106°48'W

106°47'W

DIV A

DIV A

WYOMING

CARBON CO

DP-2

T028N-R083W

T028N-R084W

42°23'N

42°23'N

42°22'N

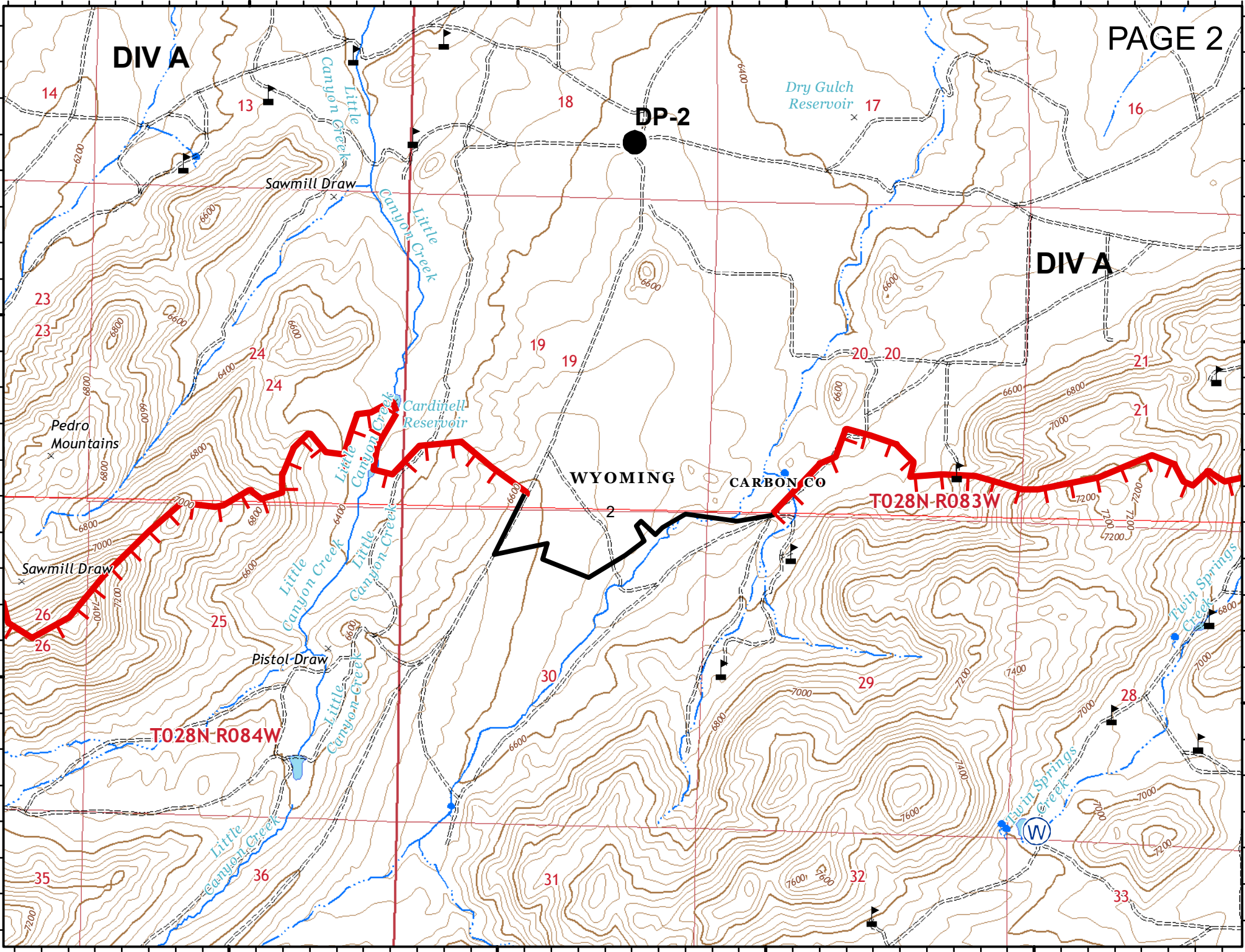
42°22'N

106°50'W

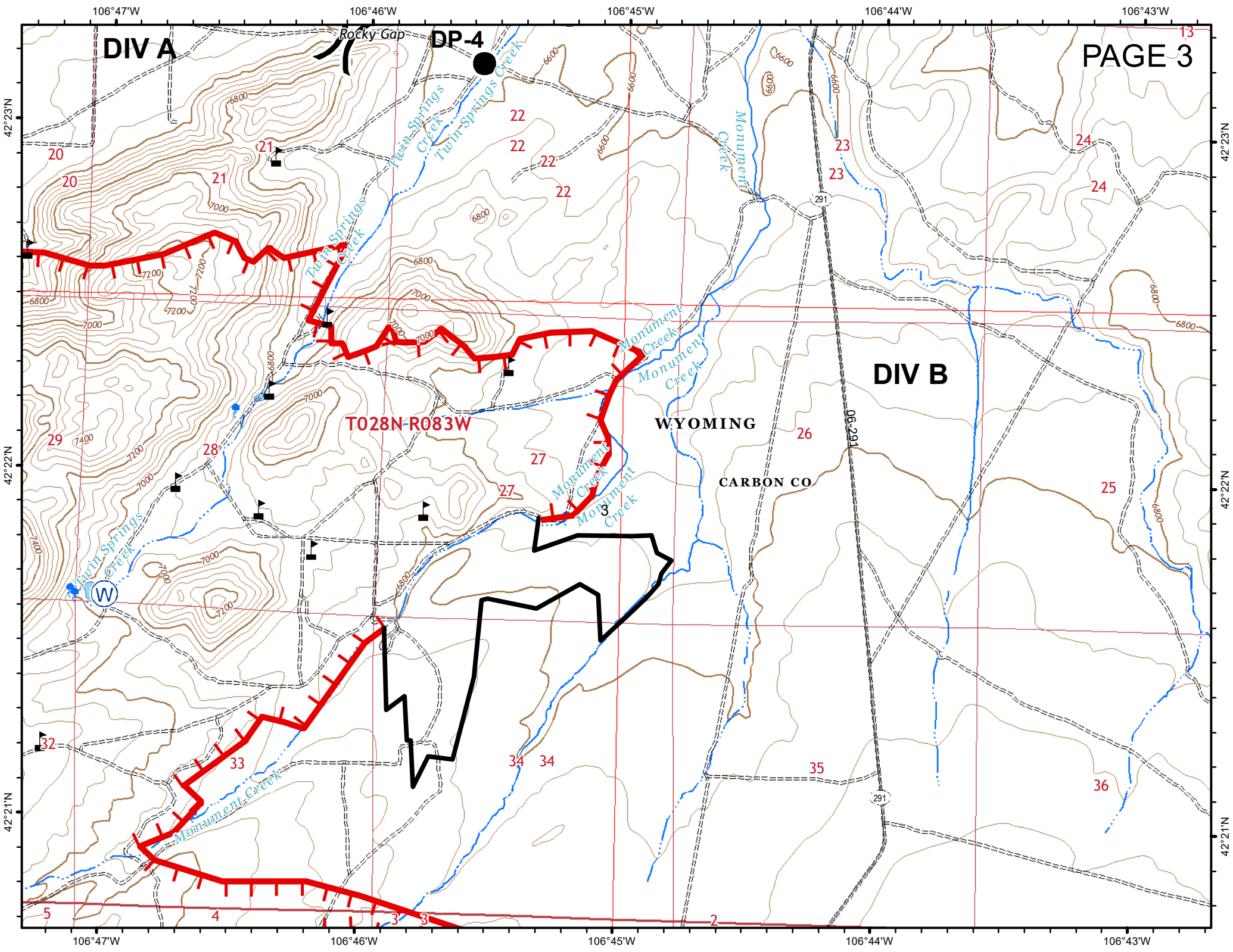
106°49'W

106°48'W

106°47'W







DIV A

DP-4

T028N-R083W

WYOMING

CARBON CO

DIV B

106°47'W

106°46'W

106°45'W

106°44'W

106°43'W

42°23'N

42°23'N

42°22'N

42°22'N

42°21'N

42°21'N

20

21

22

22

22

22

23

23

24

24

29

28

27

27

26

25

32

33

34

34

35

36

5

4

3

3

2

106°47'W

106°46'W

106°45'W

106°44'W

106°43'W

106°47'W

106°46'W

106°45'W

106°44'W

42°20'N

42°20'N

42°19'N

42°19'N

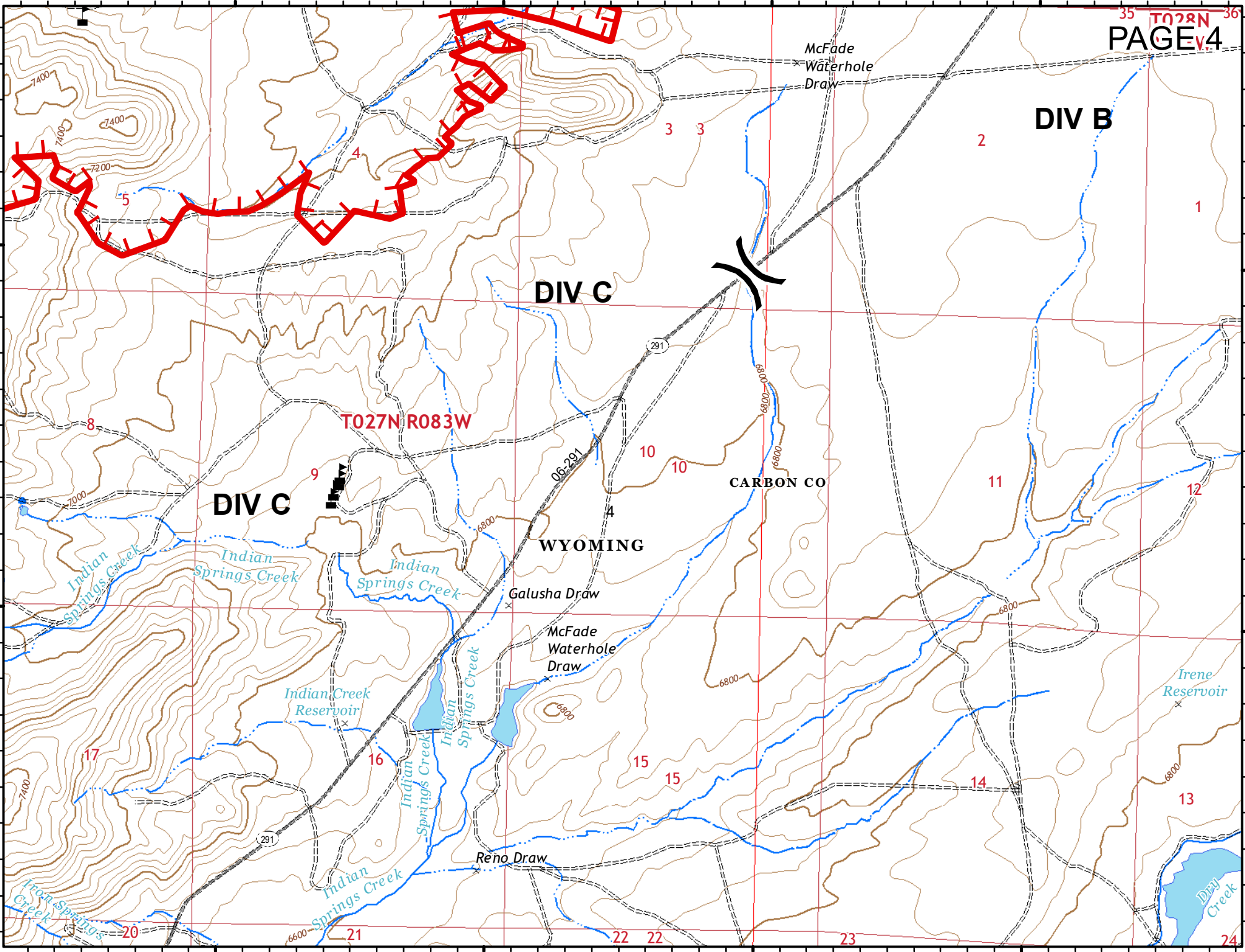
42°18'N

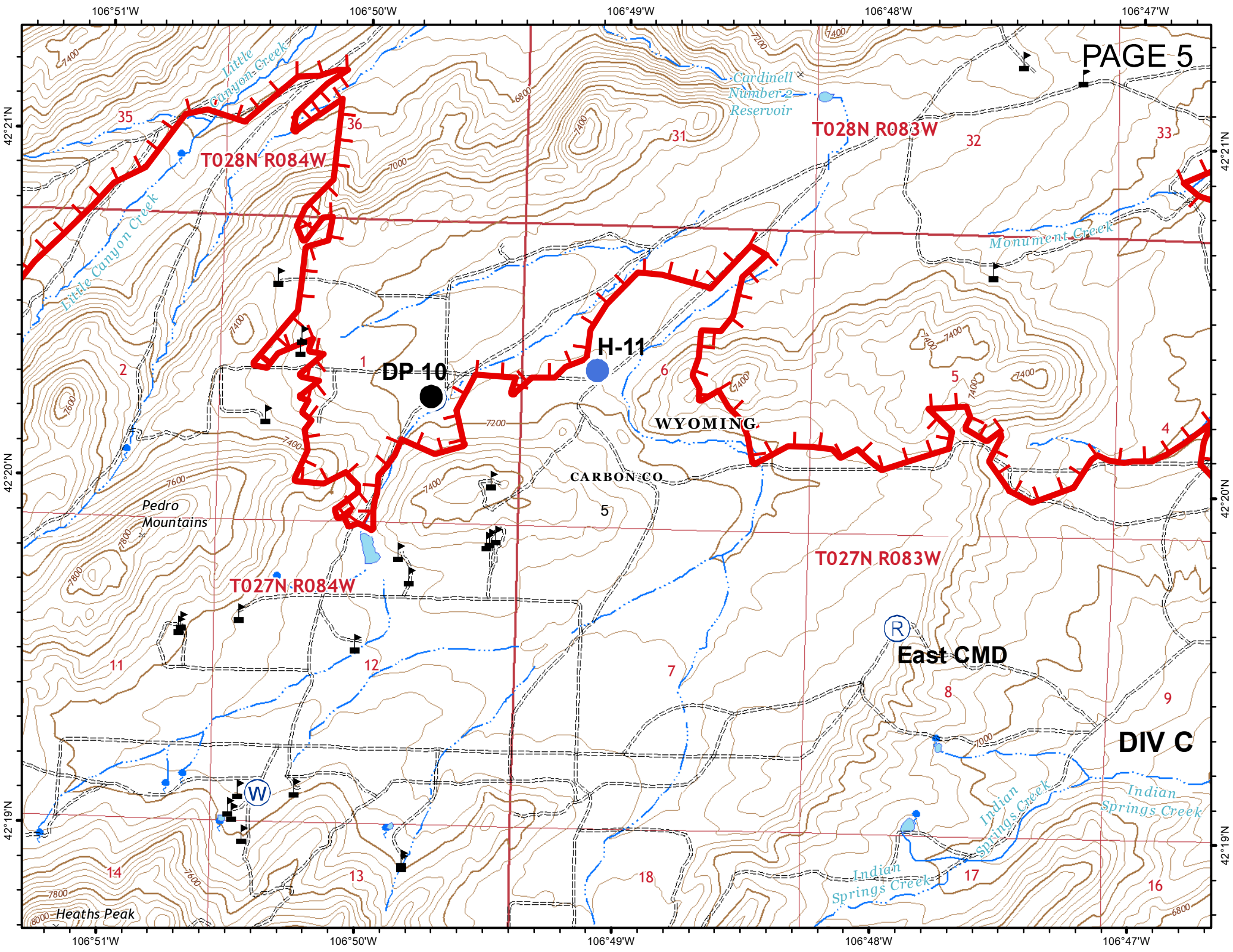
106°47'W

106°46'W

106°45'W

106°44'W





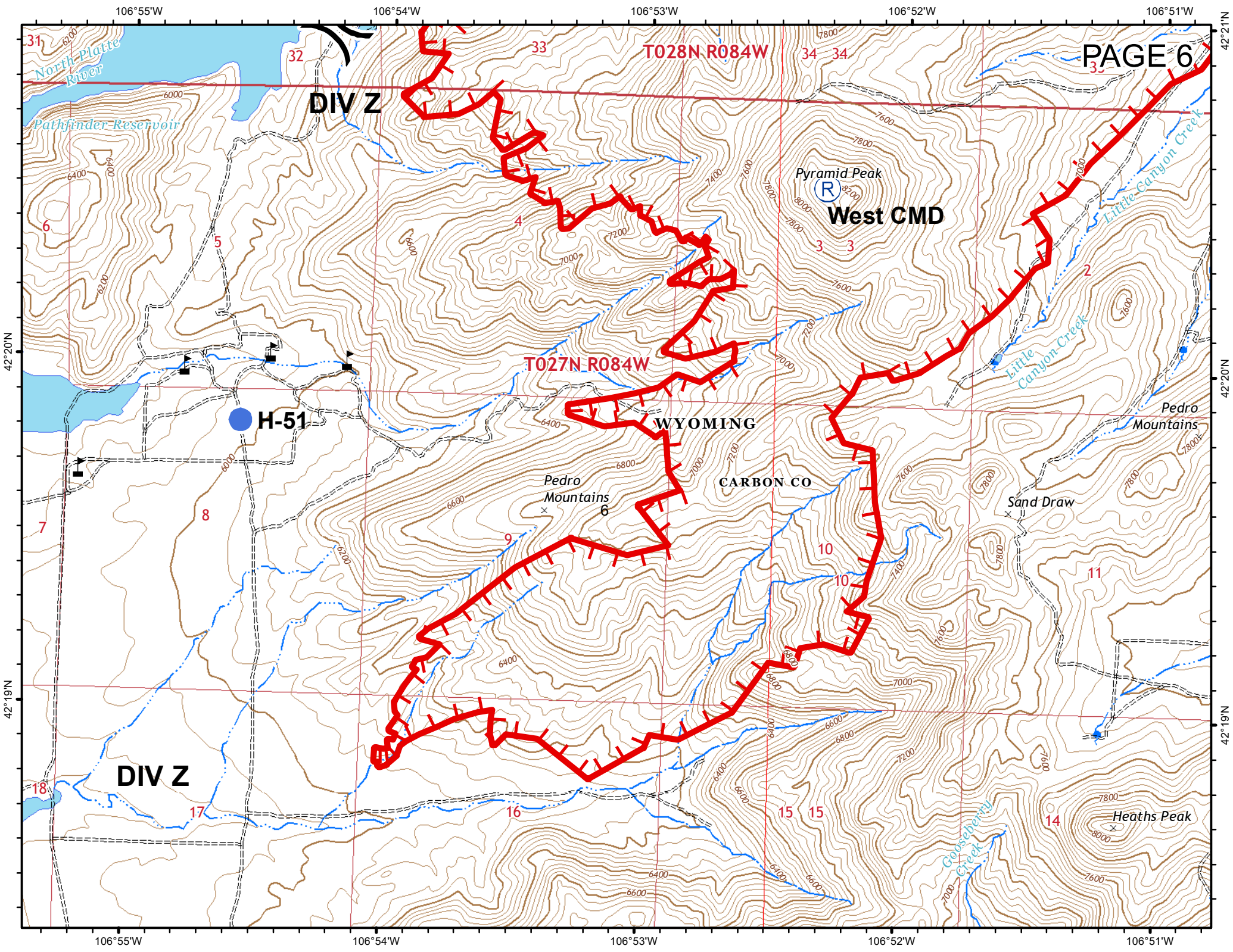
WYOMING

CARBON CO

East CMD

DIV C





DIV Z

T028N R084W

T027N R084W

WYOMING

CARBON CO

Pyramid Peak  
8200  
West CMD

Pedro Mountains  
6800

Heaths Peak  
8000

H-51

DIV Z

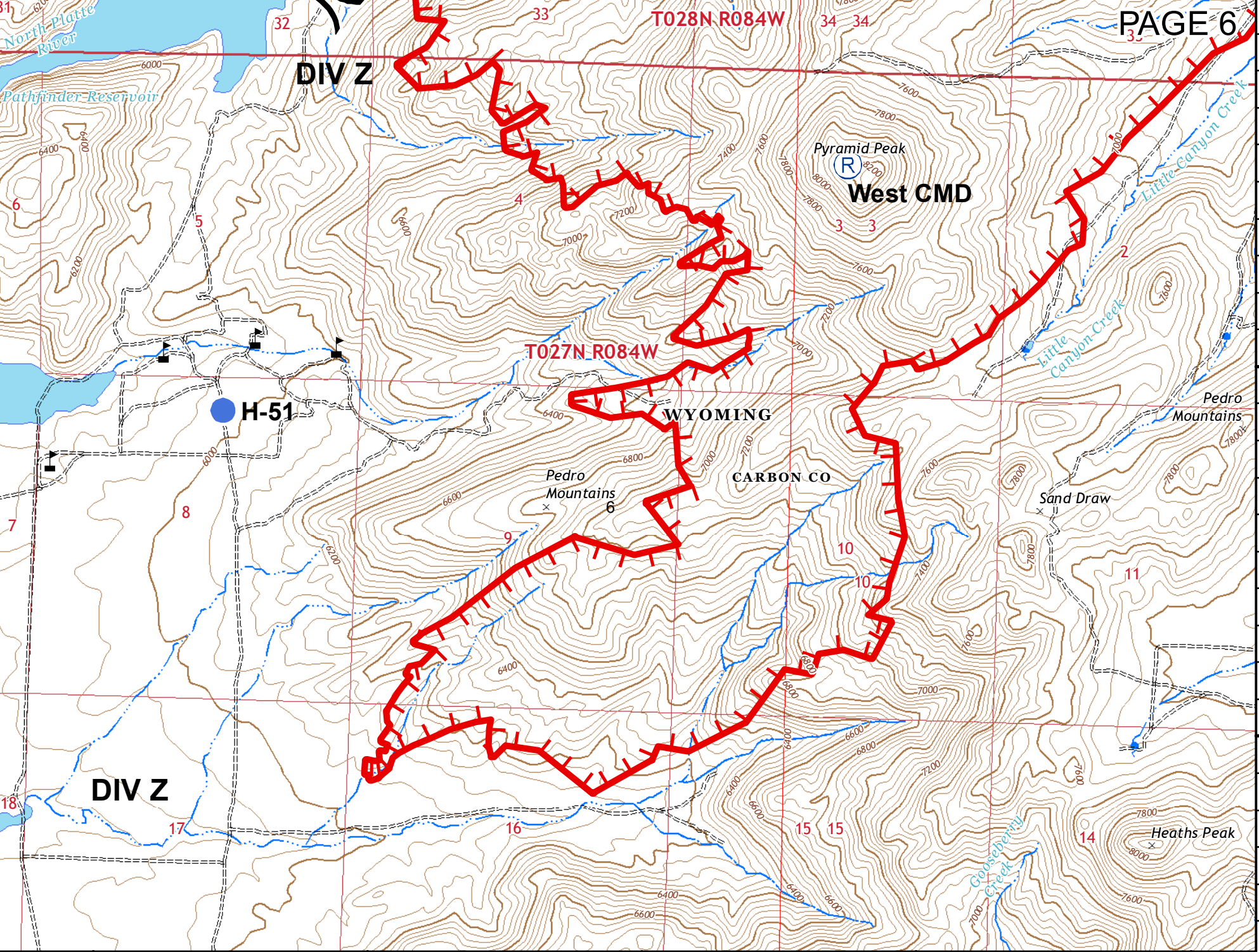
31  
North Platte River

Pathfinder Reservoir

Little Canyon Creek

Sand Draw

Goldenberry Creek



42°20'N

42°19'N

42°21'N

42°20'N

42°19'N

106°55'W

106°54'W

106°53'W

106°52'W

106°51'W

106°55'W

106°54'W

106°53'W

106°52'W

106°51'W