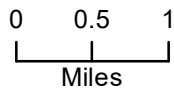


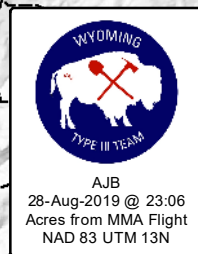
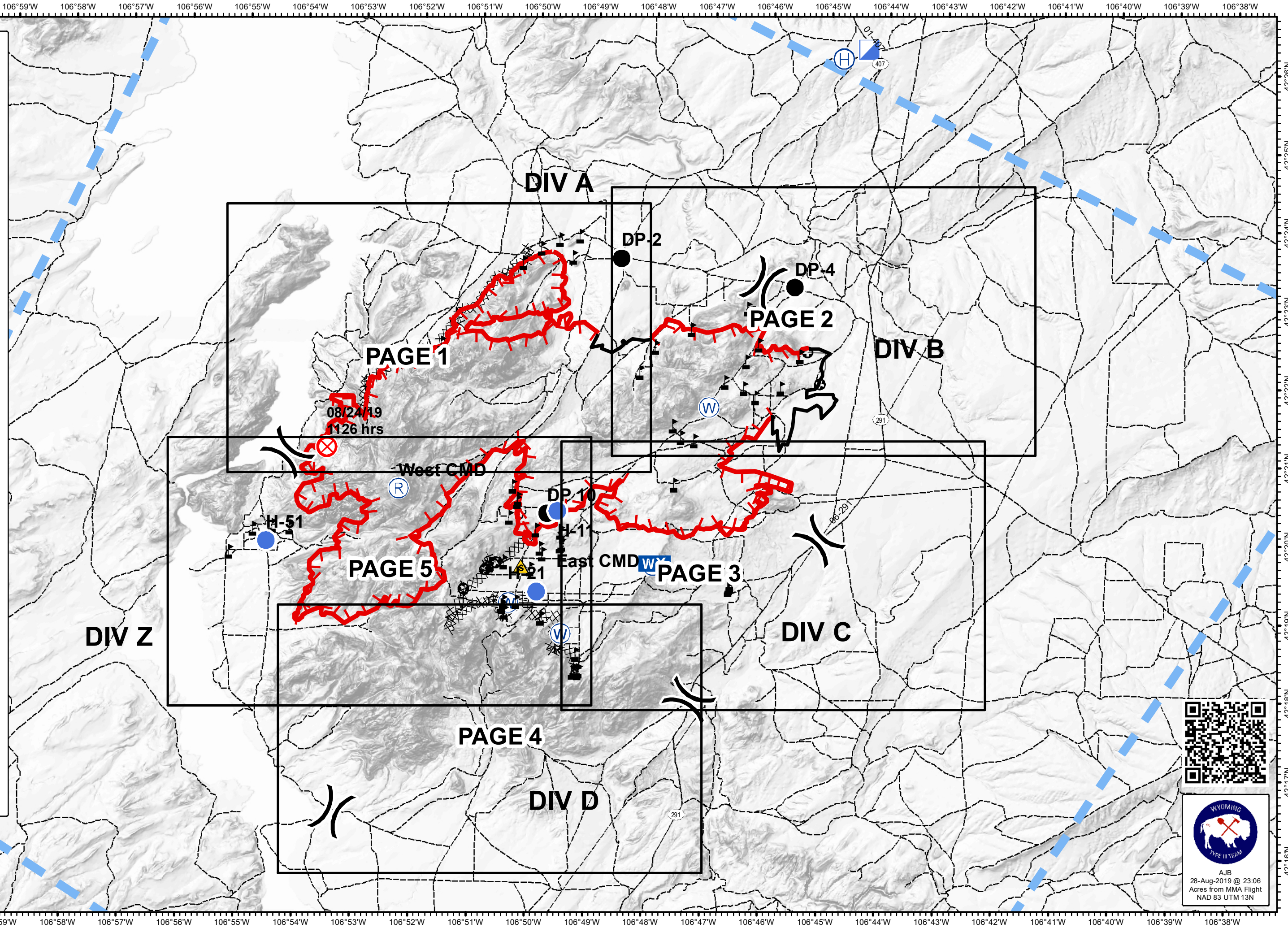
Pedro Mountain

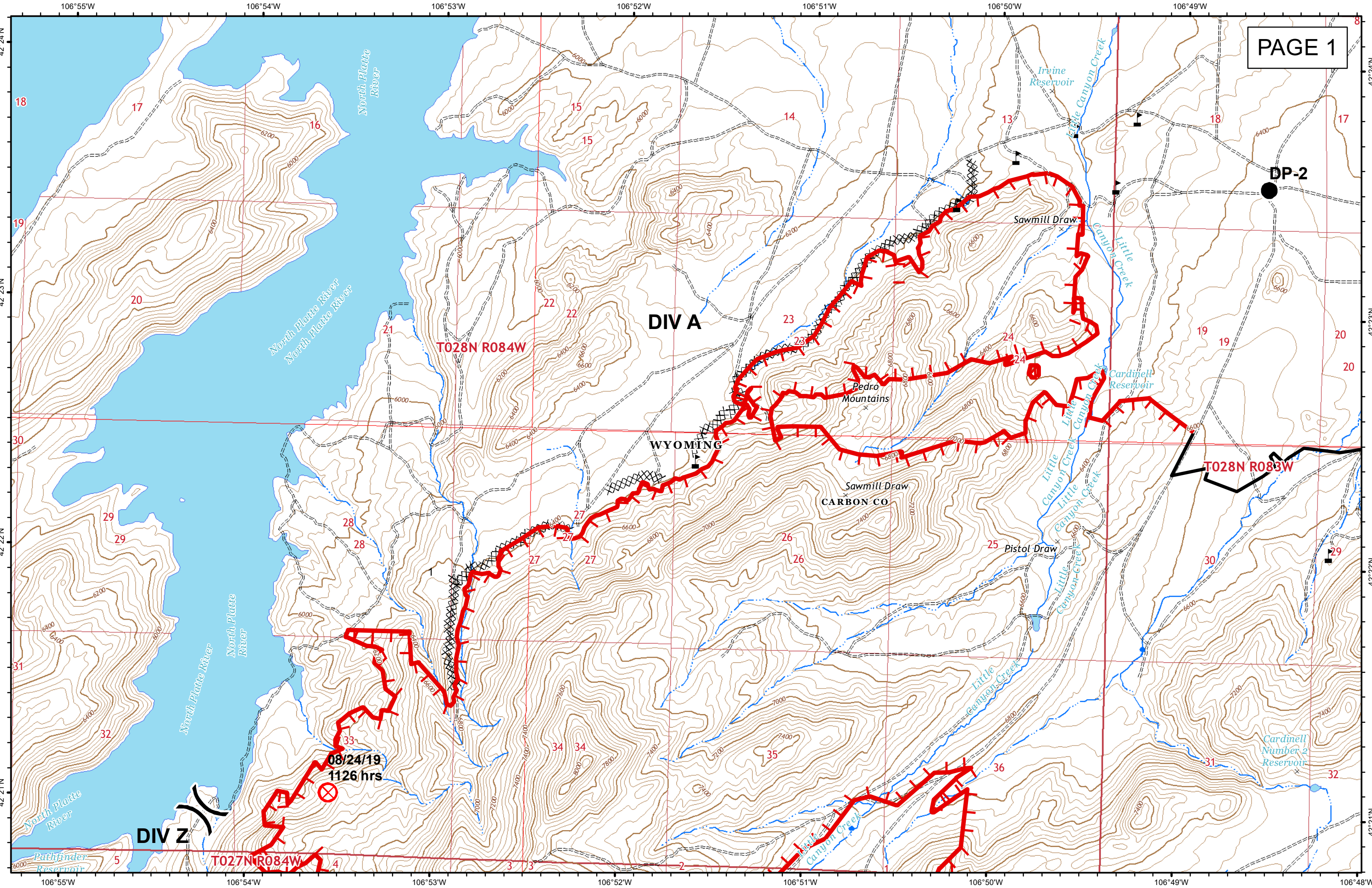
IAP MAP
WY-RAD-019341
8/29/19 Day

Appx. 12,028 acres
at 1850 hrs
on 8/28/19



- Drop Point
- ⊗ Fire Origin
- Ⓜ Helibase
- Helispot
- ▢ Incident Command Post
- WX Mobile Weather Unit
- Ⓡ Repeater
- ⚠ Safety Zone
- Ⓜ Water Source
- ⚠ Value at Risk
-) Division Break
- ┌ Uncontrolled Fire Edge
- Completed Line
- XXXX Completed Dozer Line
- H - H Completed Hand Line
- R - R Road as Completed Line
- ▬ Temporary Flight Restriction
- ⊕ Other
- Secondary Hwy. (incl. Co.)
- - - BLM WY Roads NAIP 2009





DIV A

WYOMING

CARBON CO

DIV Z

T028N R084W

T028N R083W

T027N R084W

DP-2

08/24/19
1126 hrs

Sawmill Draw

Pedro Mountains

Pistol Draw

Irvine Reservoir

Cardinell Reservoir

Cardinell Number 2 Reservoir

North Platte River

North Platte River

North Platte River

North Platte River

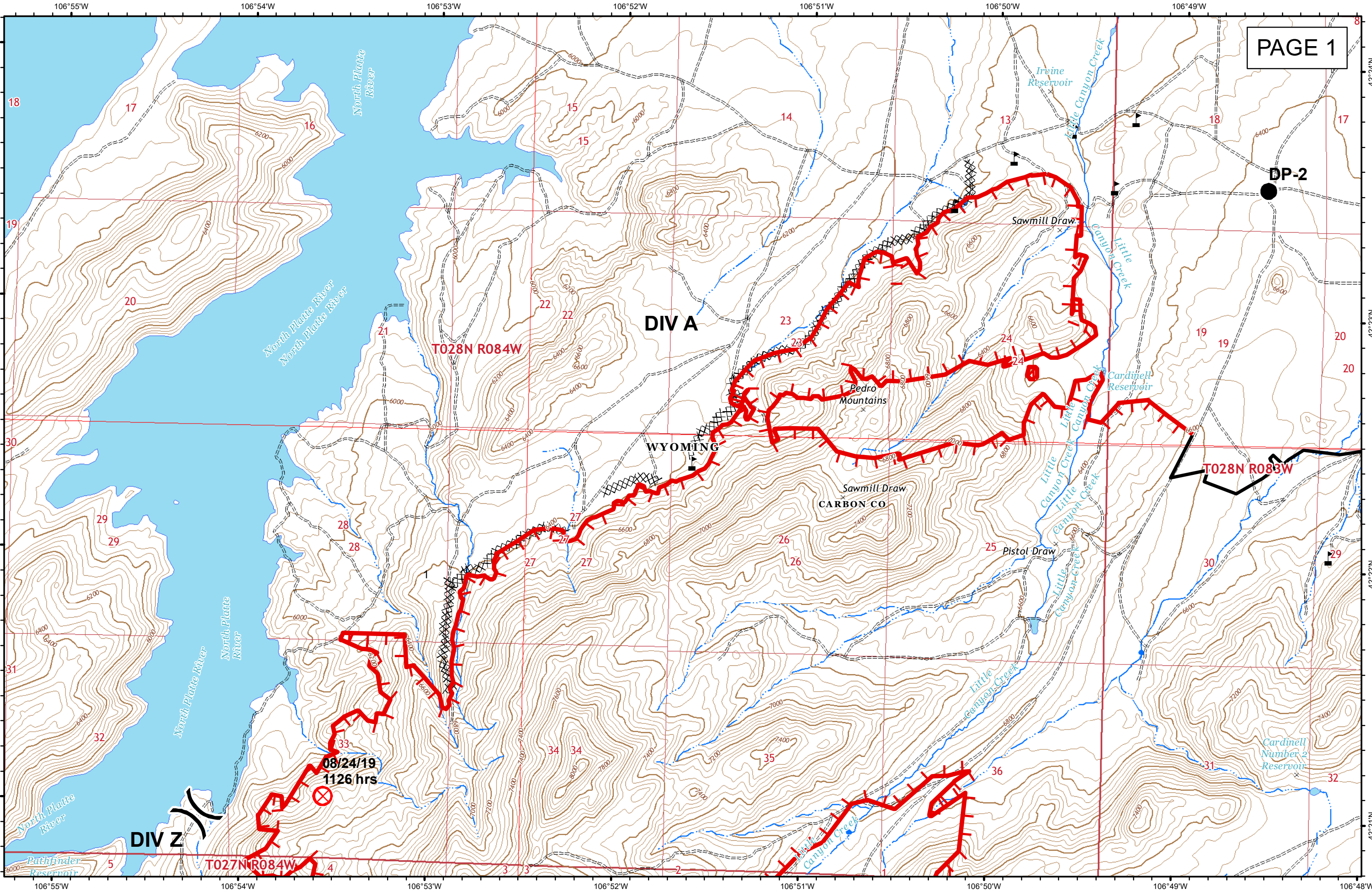
Pathfinder Reservoir

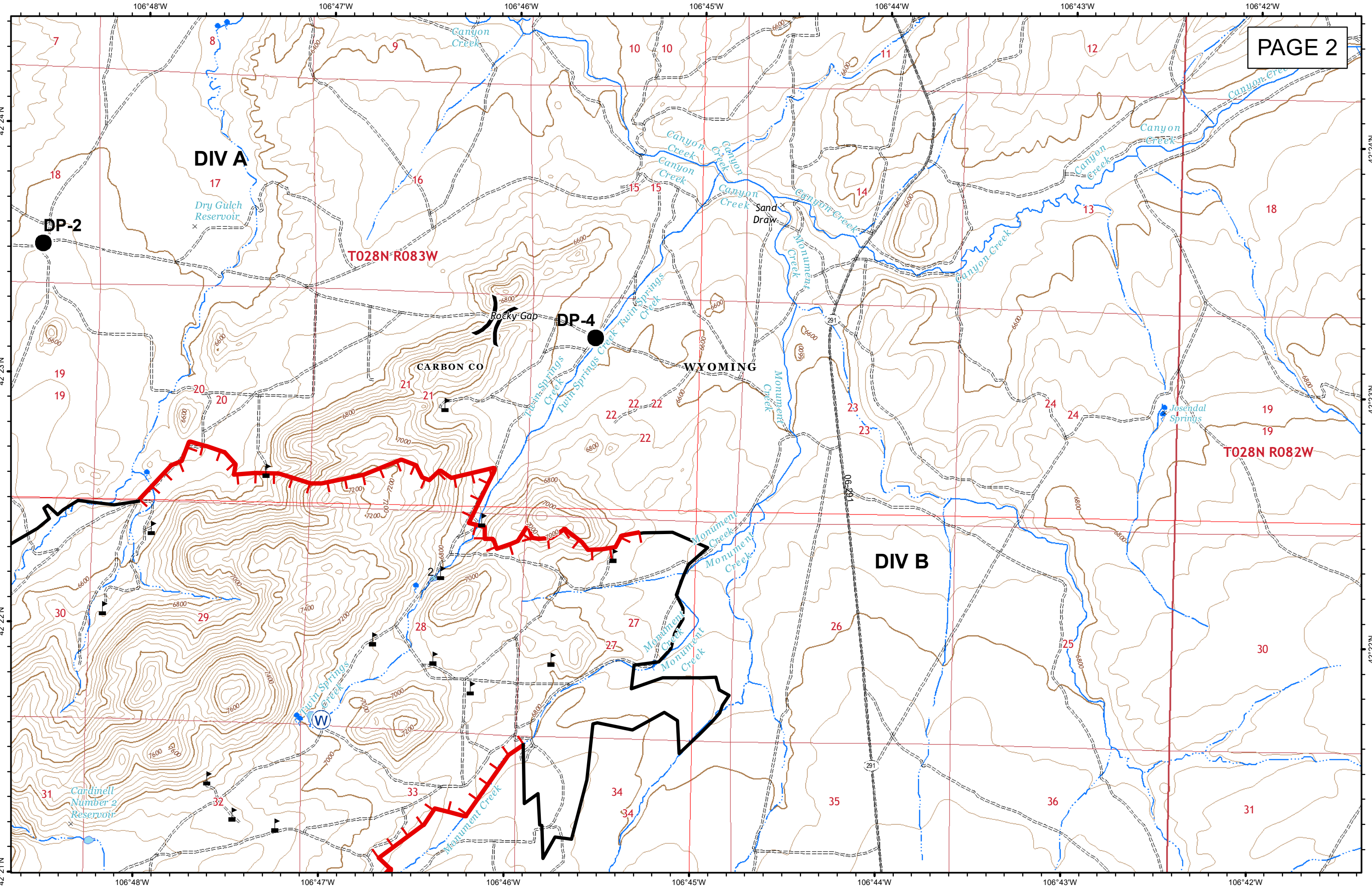
Little Canyon Creek

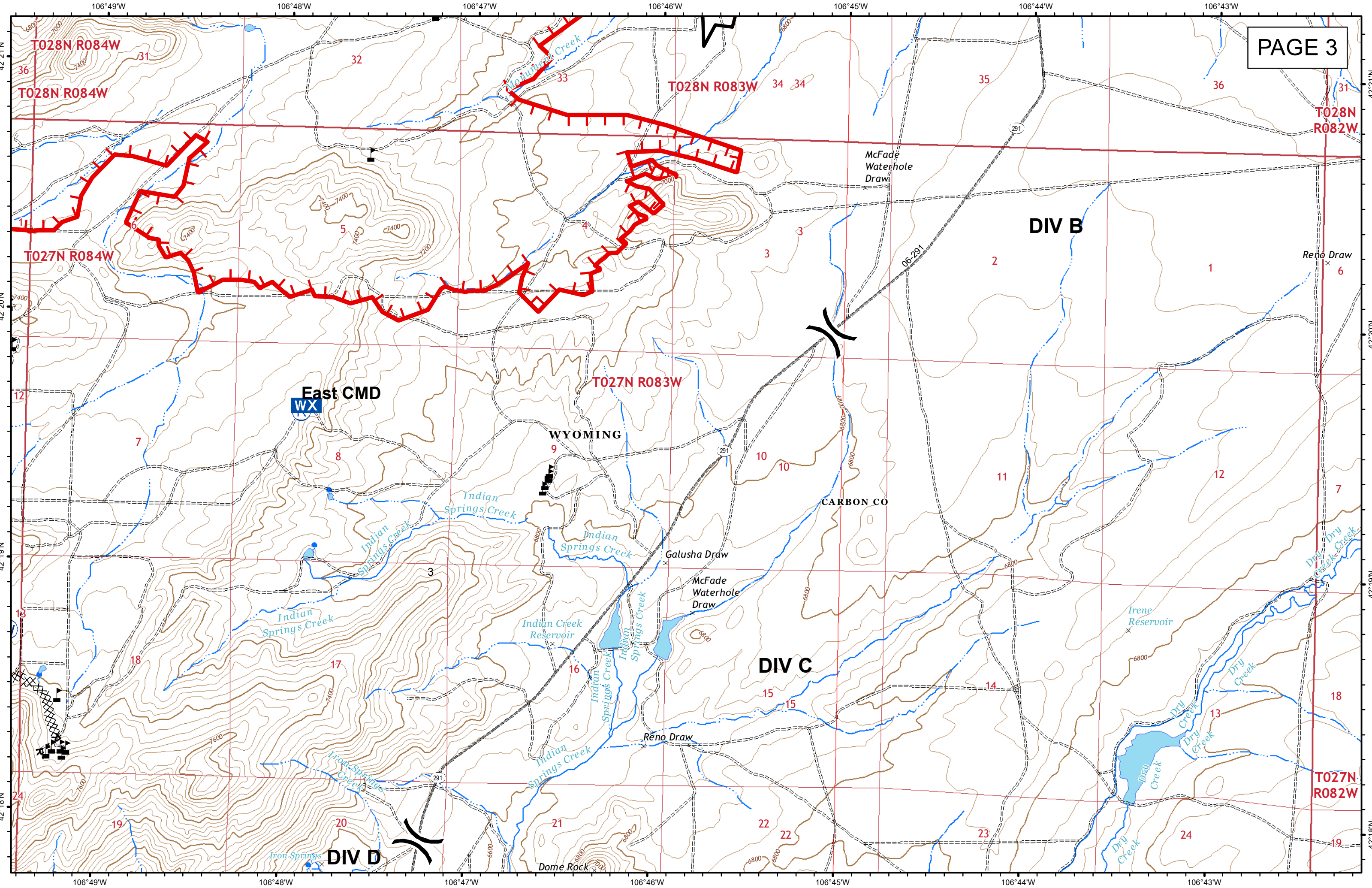
Little Canyon Creek

Little Canyon Creek

Little Canyon Creek







DIV C

DIV Z

DIV D

WYOMING

CARBON CO

Heaths Peak

The Chimneys

Tye Draw

Indian Springs Creek

Iron Springs Creek

Iron Springs

Iron Springs Creek

Iron Springs Creek

Iron Springs Creek

Gooseberry Creek

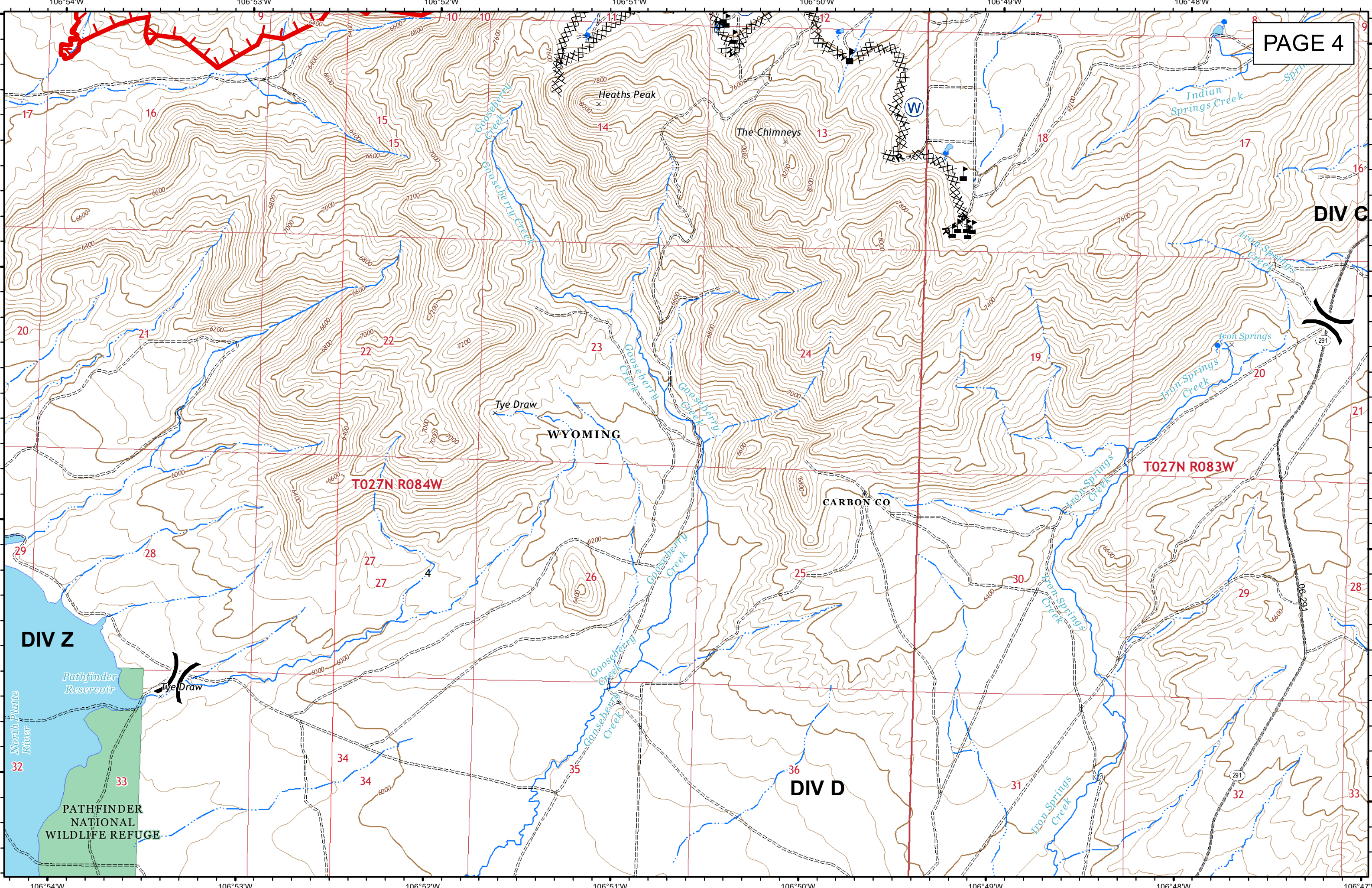
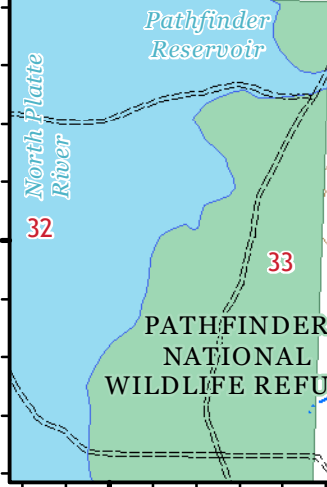
Gooseberry Creek

Gooseberry Creek

Gooseberry Creek

Gooseberry Creek

Gooseberry Creek



DIV A
08/24/19
1126 hrs

