

Pedro Mountain

IAP MAP WY-RAD-019341

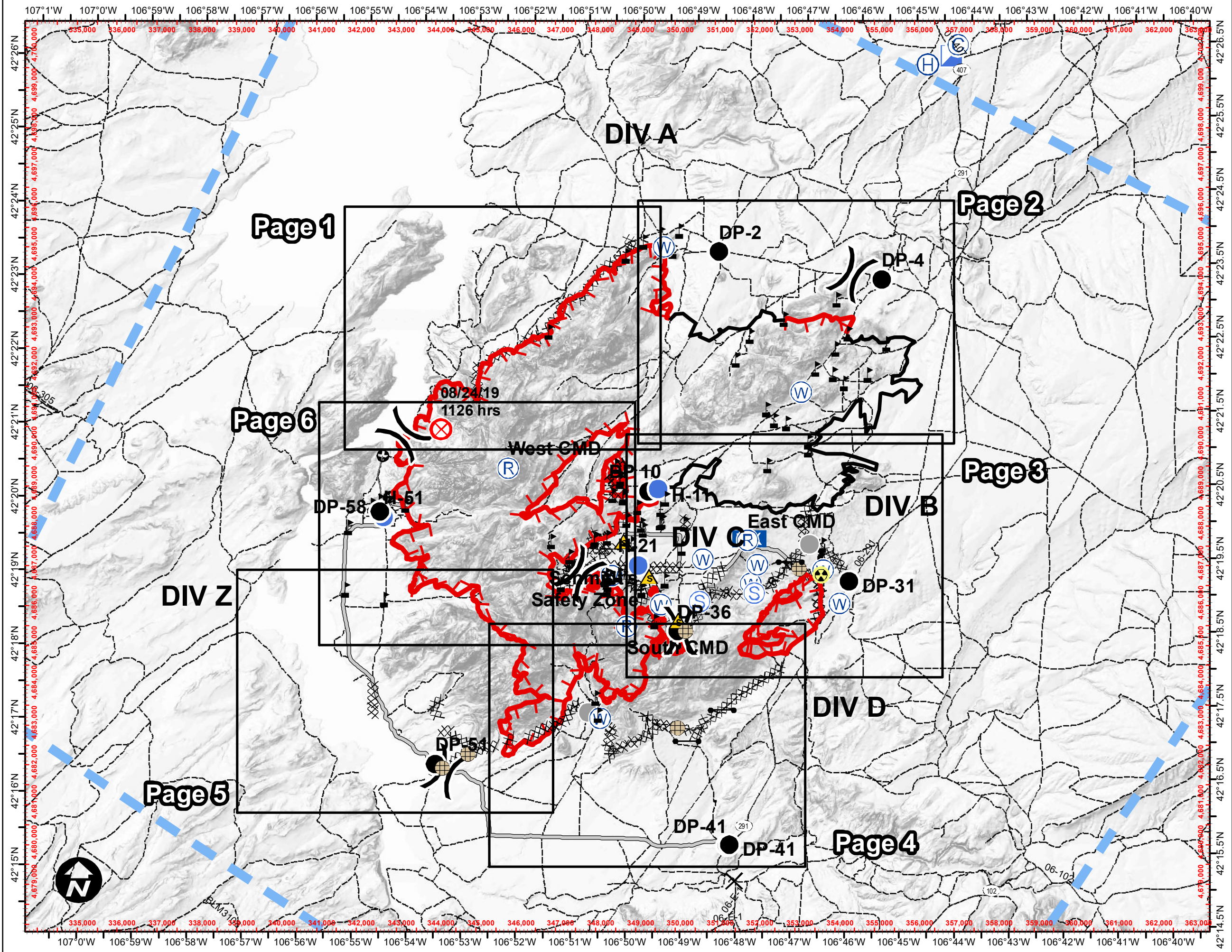
9/1/19 Day
Appx. 16,590 IR acres @
1945 hrs on 8/30/19
27% Contained



- Camp
 - Closure
 - Drop Point
 - Fence - Cut/Damaged
 - Fire Origin
 - Gate
 - Hazard
 - Helibase
 - Helispot
 - Incident Command Post
 - Mobile Weather Unit
 - Repeater
 - Safety Zone
 - Staging Area
 - Water Source
 - Value at Risk
 - Other
 - Division Break
- Uncontrolled Fire Edge
 - Completed Line
 - Completed Dozer Line
 - H - Completed Hand Line
 - R - Road as Completed Line
 - Access or Improved Road
 - Temporary Flight Restriction
 - Other
 - Secondary Hwy. (incl. Co.)
 - BLM WY Roads NAIP 2009



AJB : 31-Aug-2019 @ 22:05
NAD 1983 UTM Zone 13N



Pedro Mountain

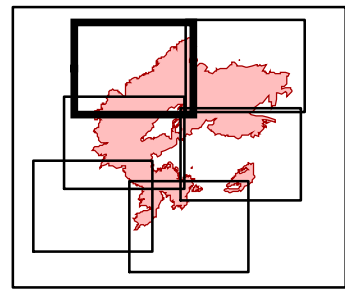
IAP MAP

WY-RAD-019341

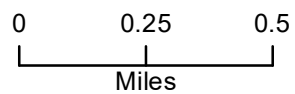
9/1/19 Day
 Appx. 16,590 IR acres @
 1945 hrs on 8/30/19
 27% Contained



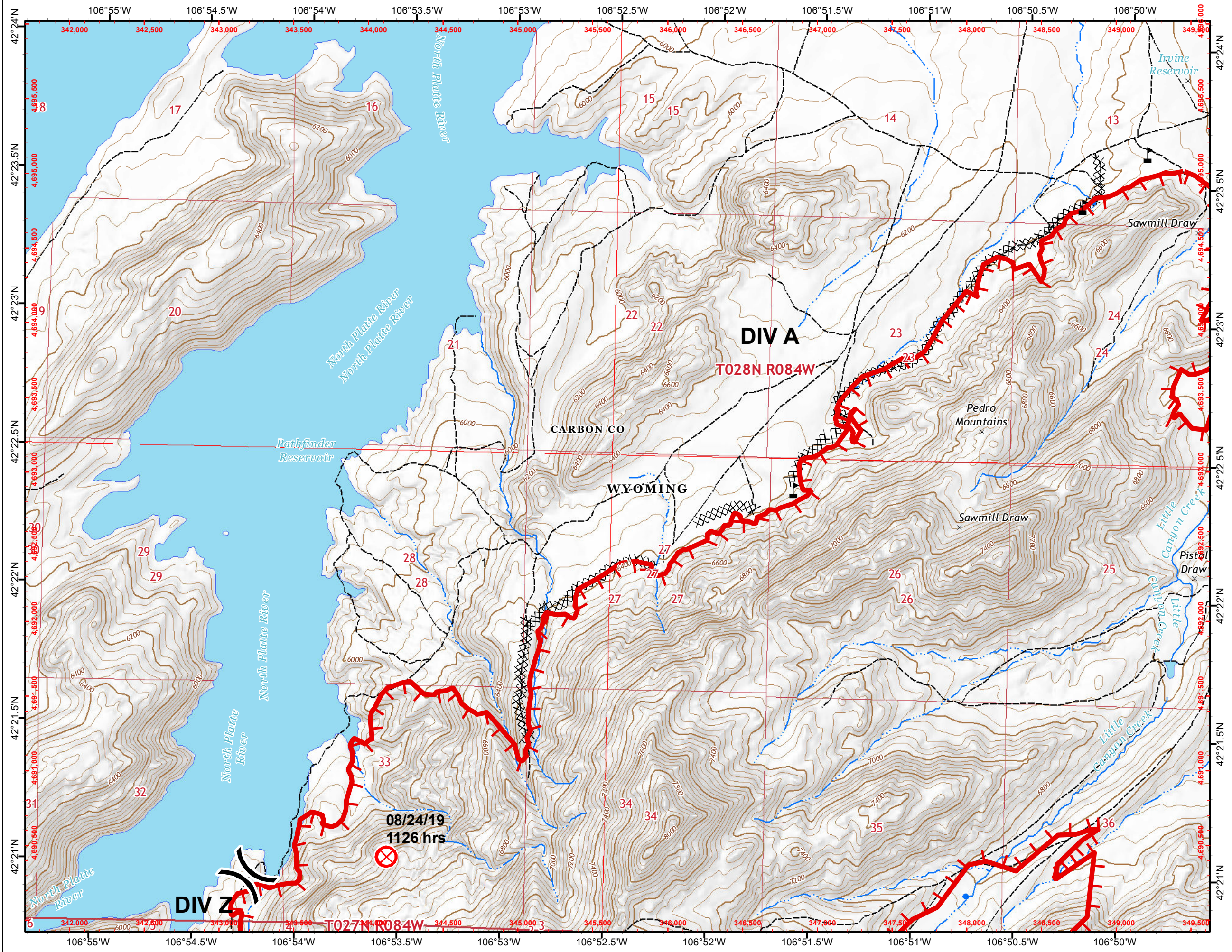
- Fire Origin
- Uncontrolled Fire Edge
- Water Source
- Completed Dozer Line
- Value at Risk
- BLM WY Roads NAIP 2009
- Division Break



Page 1



AJB : 31-Aug-2019 @ 22:38
 NAD 1983 UTM Zone 13N











Pedro Mountain

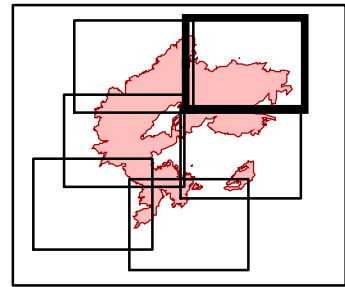
IAP MAP

WY-RAD-019341

9/1/19 Day
 Appx. 16,590 IR acres @
 1945 hrs on 8/30/19
 27% Contained



-  Drop Point
-  Uncontrolled Fire Edge
-  Water Source
-  Completed Line
-  Value at Risk
-  Secondary Hwy. (incl. Co.)
-  Division Break
-  BLM WY Roads NAIP 2009

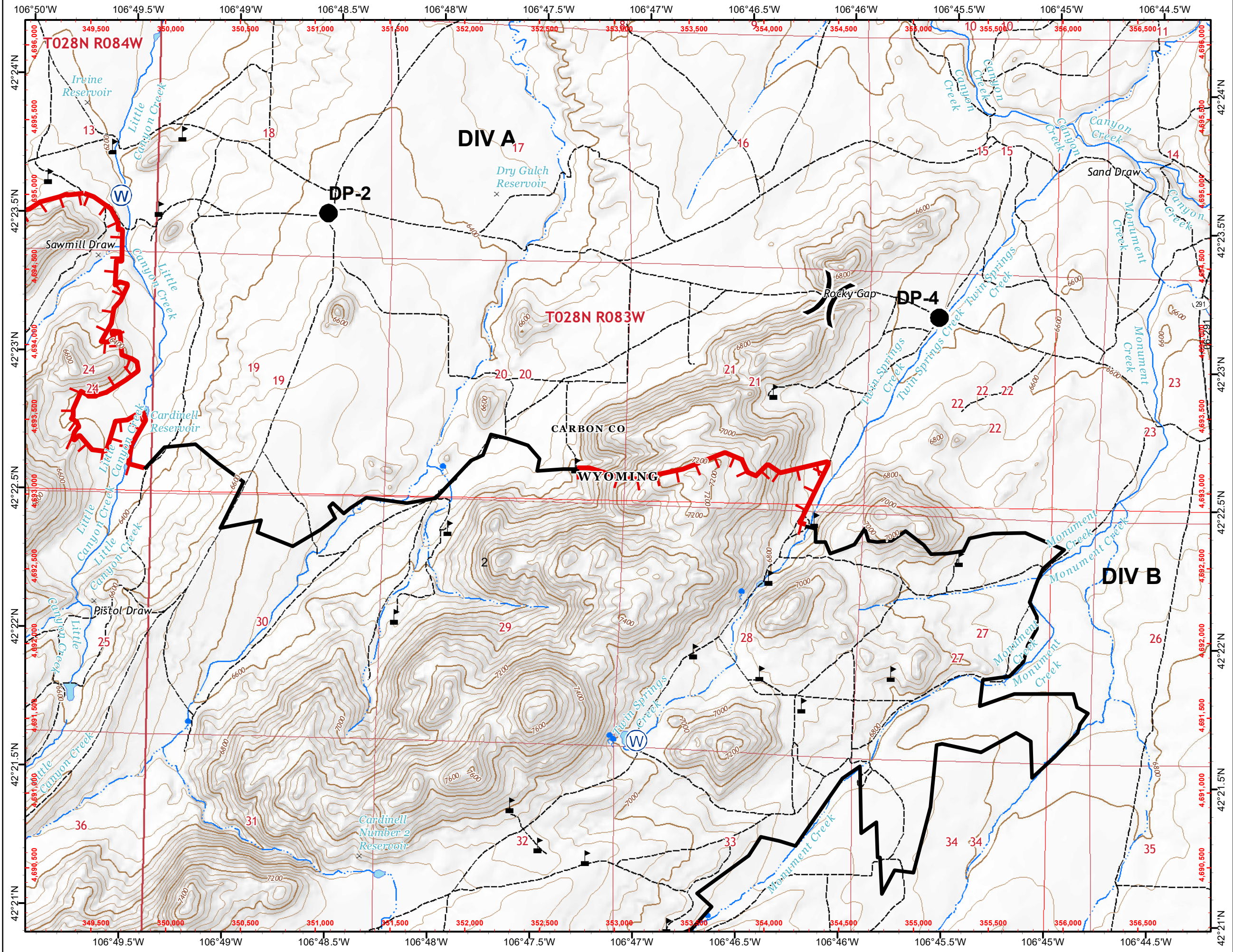


Page 2

0 0.25 0.5
 Miles



AJB : 31-Aug-2019 @ 22:39
 NAD 1983 UTM Zone 13N



Pedro Mountain

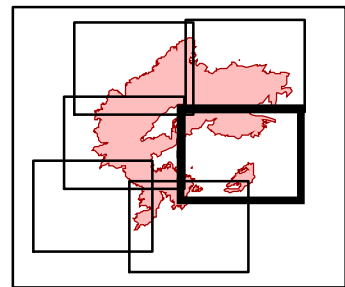
IAP MAP

WY-RAD-019341

9/1/19 Day
 Appx. 16,590 IR acres @
 1945 hrs on 8/30/19
 27% Contained



- Drop Point
- Fence - Cut/Damaged
- Gate
- Hazard
- Helispot
- WX Mobile Weather Unit
- Repeater
- Safety Zone
- Staging Area
- Water Source
- Value at Risk
- Other
- Division Break
- Uncontrolled Fire Edge
- Completed Line
- Completed Dozer Line
- H - Completed Hand Line
- R - Road as Completed Line
- Access or Improved Road
- Secondary Hwy. (incl. Co.)
- BLM WY Roads NAIP 2009

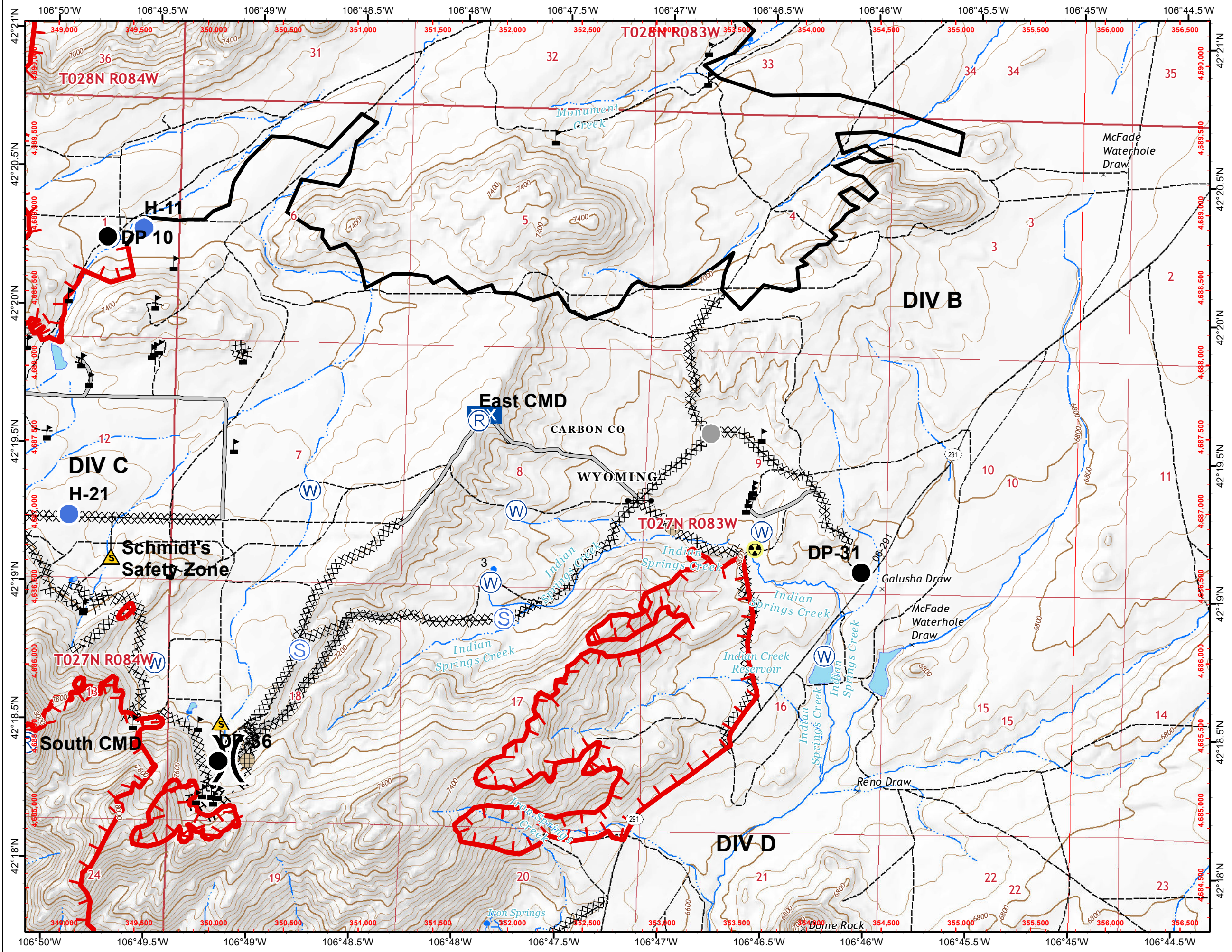


Page 3

0 0.25 0.5
 Miles



AJB : 31-Aug-2019 @ 22:40
 NAD 1983 UTM Zone 13N



Pedro Mountain

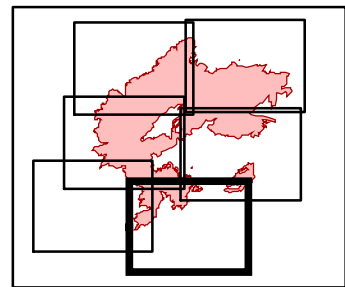
IAP MAP

WY-RAD-019341

9/1/19 Day
 Appx. 16,590 IR acres @
 1945 hrs on 8/30/19
 27% Contained



- Drop Point
- Fence - Cut/Damaged
- Gate
- Repeater
- Water Source
- Value at Risk
- Other
- Division Break
- Uncontrolled Fire Edge
- Completed Dozer Line
- Completed Hand Line
- Road as Completed Line
- Access or Improved Road
- Secondary Hwy. (incl. Co.)
- BLM WY Roads NAIP 2009

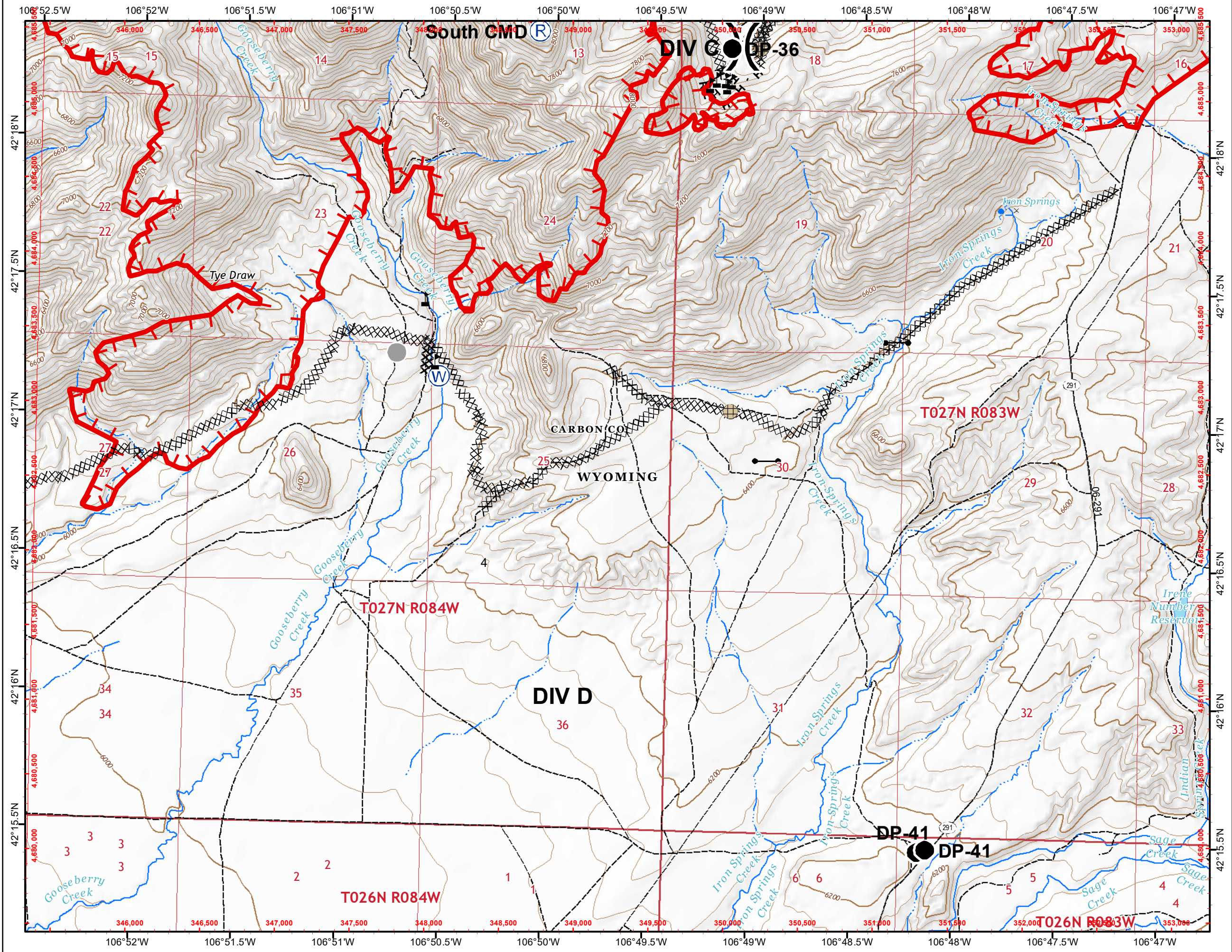


Page 4

0 0.25 0.5
 Miles



AJB : 31-Aug-2019 @ 22:42
 NAD 1983 UTM Zone 13N



Pedro Mountain

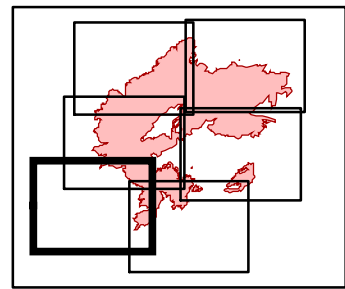
IAP MAP

WY-RAD-019341

9/1/19 Day
 Appx. 16,590 IR acres @
 1945 hrs on 8/30/19
 27% Contained



- Drop Point
- Uncontrolled Fire Edge
- Completed Dozer Line
- Fence - Cut/Damaged
- BLM WY Roads NAIP 2009
- Value at Risk
- Division Break

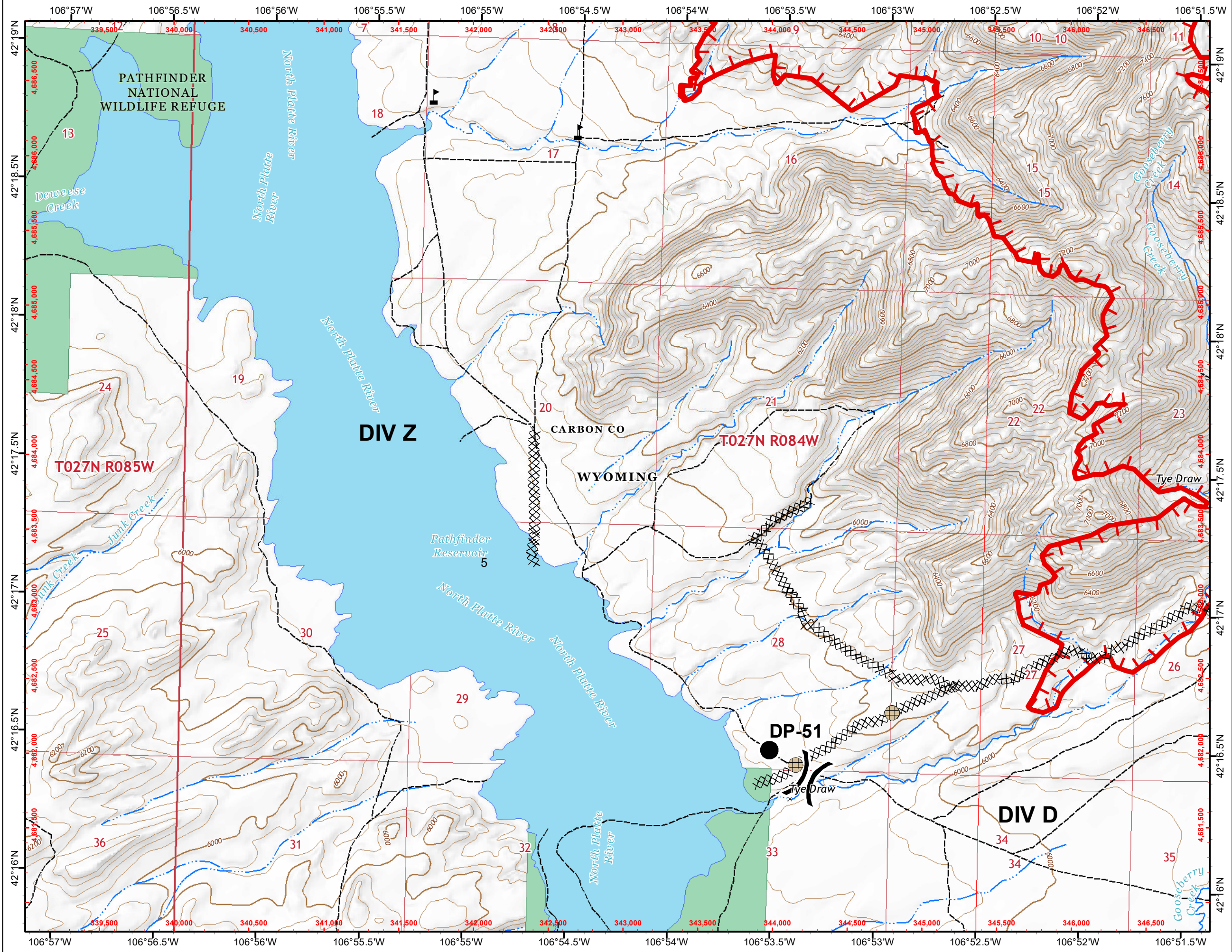


Page 5

0 0.25 0.5
 Miles



AJB : 31-Aug-2019 @ 22:43
 NAD 1983 UTM Zone 13N



Pedro Mountain

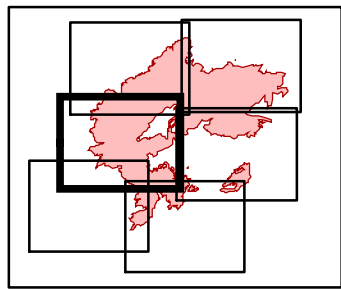
IAP MAP

WY-RAD-019341

9/1/19 Day
 Appx. 16,590 IR acres @
 1945 hrs on 8/30/19
 27% Contained



- Drop Point
- Uncontrolled Fire Edge
- Fire Origin
- Completed Dozer Line
- Helispot
- Completed Hand Line
- Repeater
- Road as Completed Line
- Safety Zone
- Access or Improved Road
- Water Source
- Value at Risk
- BLM WY Roads NAIP 2009
- Division Break



Page 6

0 0.25 0.5
 Miles



AJB : 31-Aug-2019 @ 22:44
 NAD 1983 UTM Zone 13N

