

# Pedro Mountain

## IAP MAP WY-RAD-019341

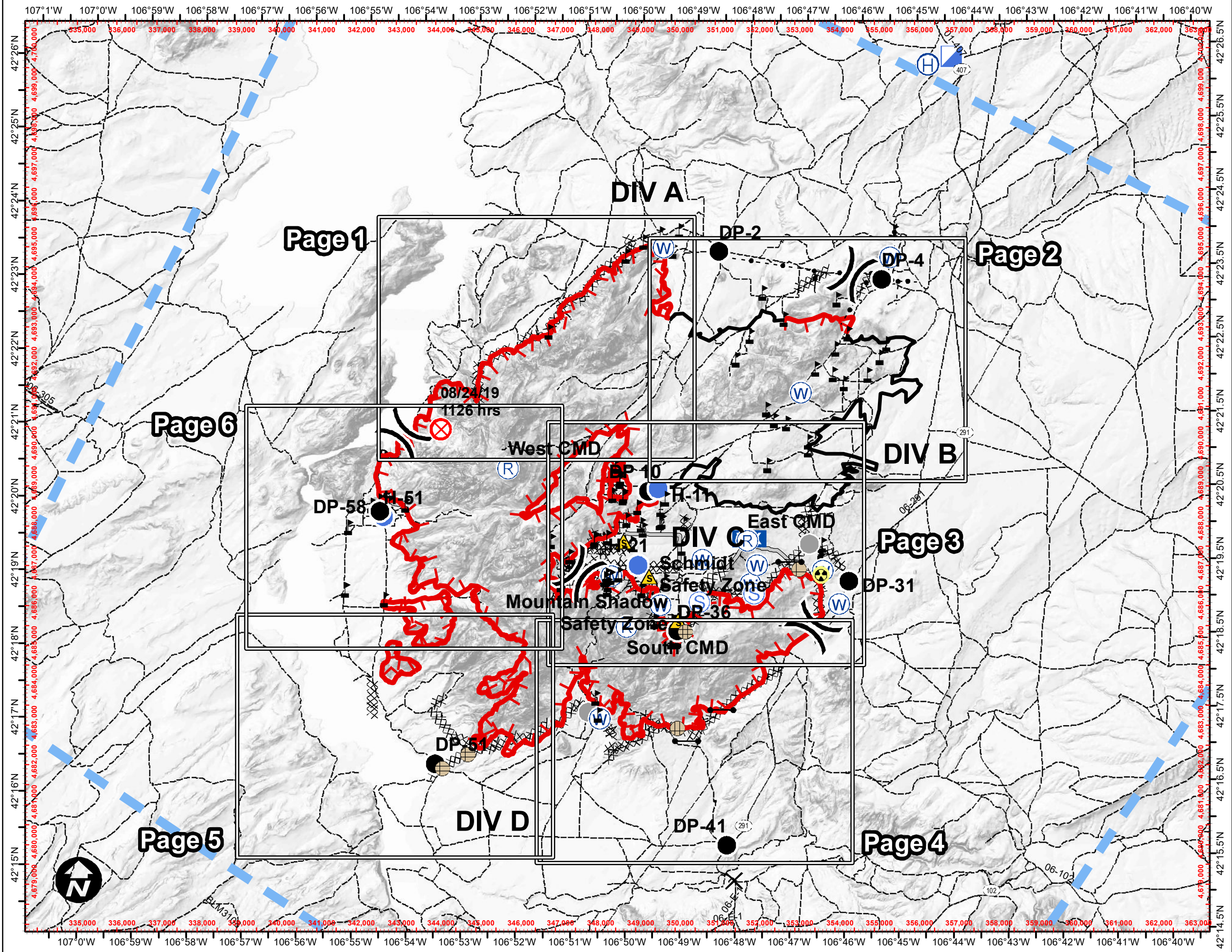
Day Operations: 9/2/19  
Appx. 19,525 IR acres @  
0248 hrs on 9/1/19  
24% Contained



- X Closure
- Drop Point
- ⊕ Fence - Cut/Damaged
- ⊗ Fire Origin
- ⚡ Gate
- ☢ Hazard
- Ⓜ Helibase
- Helispot
- Ⓜ Incident Command Post
- WX Mobile Weather Unit
- Ⓜ Repeater
- ⚠ Safety Zone
- Ⓜ Staging Area
- Ⓜ Water Source
- ⚠ Value at Risk
- Other
- Ⓜ Division Break
- ▬ Uncontrolled Fire Edge
- ▬ Completed Line
- XXXX Completed Dozer Line
- H Completed Hand Line
- R Road as Completed Line
- ▬ Access or Improved Road
- ▬ Temporary Flight Restriction
- ⋯ Highlighted Manmade Feature
- ⊕ Other
- ▬ Secondary Hwy. (incl. Co.)
- ▬ BLM WY Roads NAIP 2009



AJB : 1-Sep-2019 @ 22:21  
NAD 1983 UTM Zone 13N



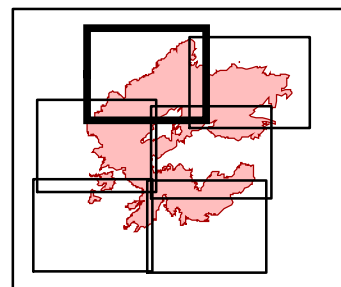
# Pedro Mountain

## IAP MAP WY-RAD-019341

Day Operations: 9/2/19  
Appx. 19,525 IR acres @  
0248 hrs on 9/1/19  
24% Contained



- Fire Origin
- Uncontrolled Fire Edge
- Completed Line
- Water Source
- Completed Dozer Line
- Value at Risk
- Other
- BLM WY Roads NAIP 2009
- Division Break

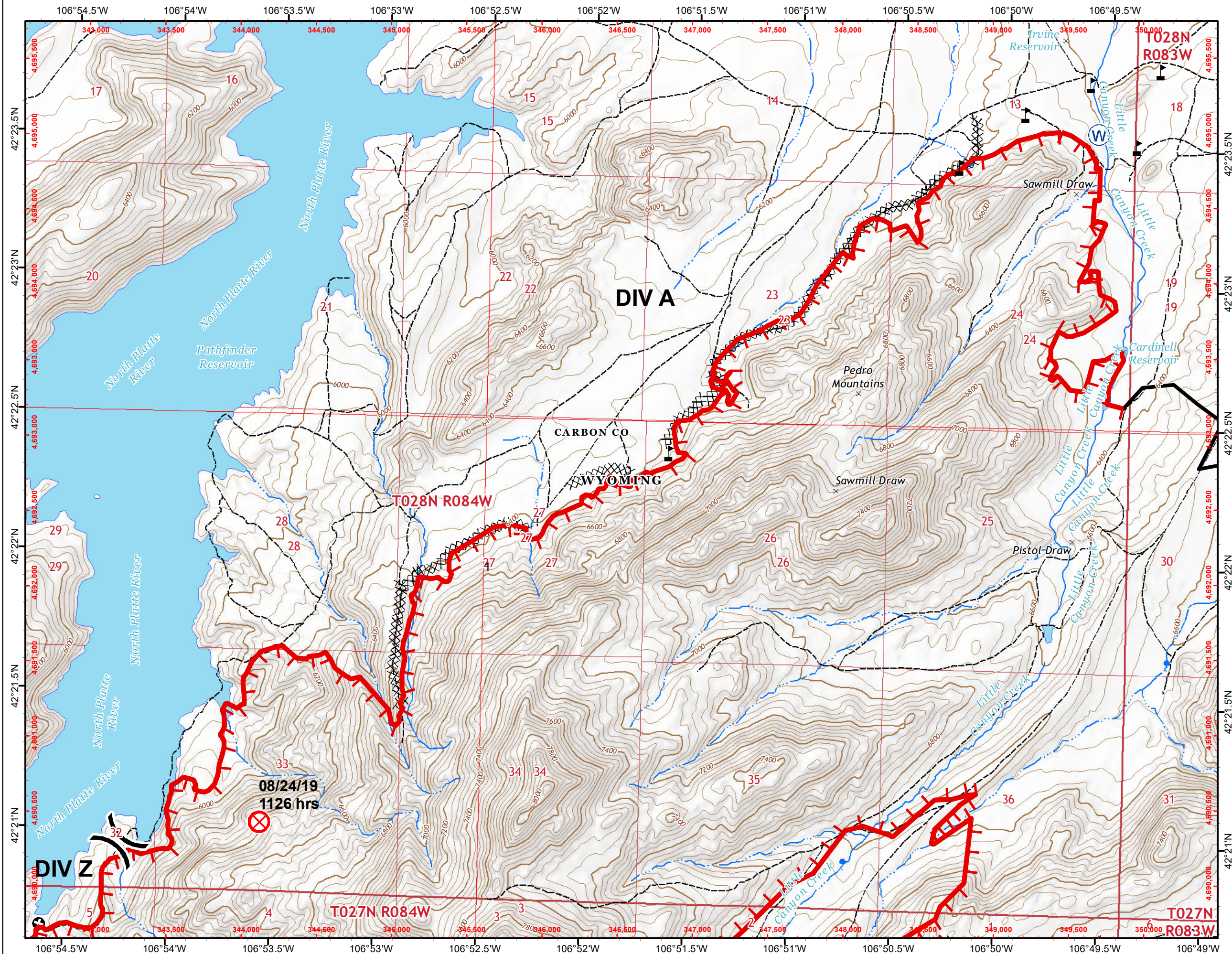


Page 1

0 0.25 0.5  
Miles



AJB : 1-Sep-2019 @ 22:01  
NAD 1983 UTM Zone 13N



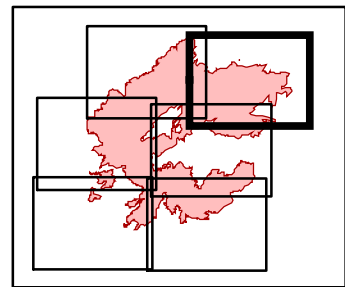
# Pedro Mountain

## IAP MAP WY-RAD-019341

Day Operations: 9/2/19  
Appx. 19,525 IR acres @  
0248 hrs on 9/1/19  
24% Contained



- Drop Point
- ◻ Uncontrolled Fire Edge
- Ⓜ Water Source
- ⚡ Value at Risk
- ⎓ Division Break
- Completed Line
- ⊗ Completed Dozer Line
- ⋯ Highlighted Manmade Feature
- Secondary Hwy. (incl. Co.)
- BLM WY Roads NAIP 2009

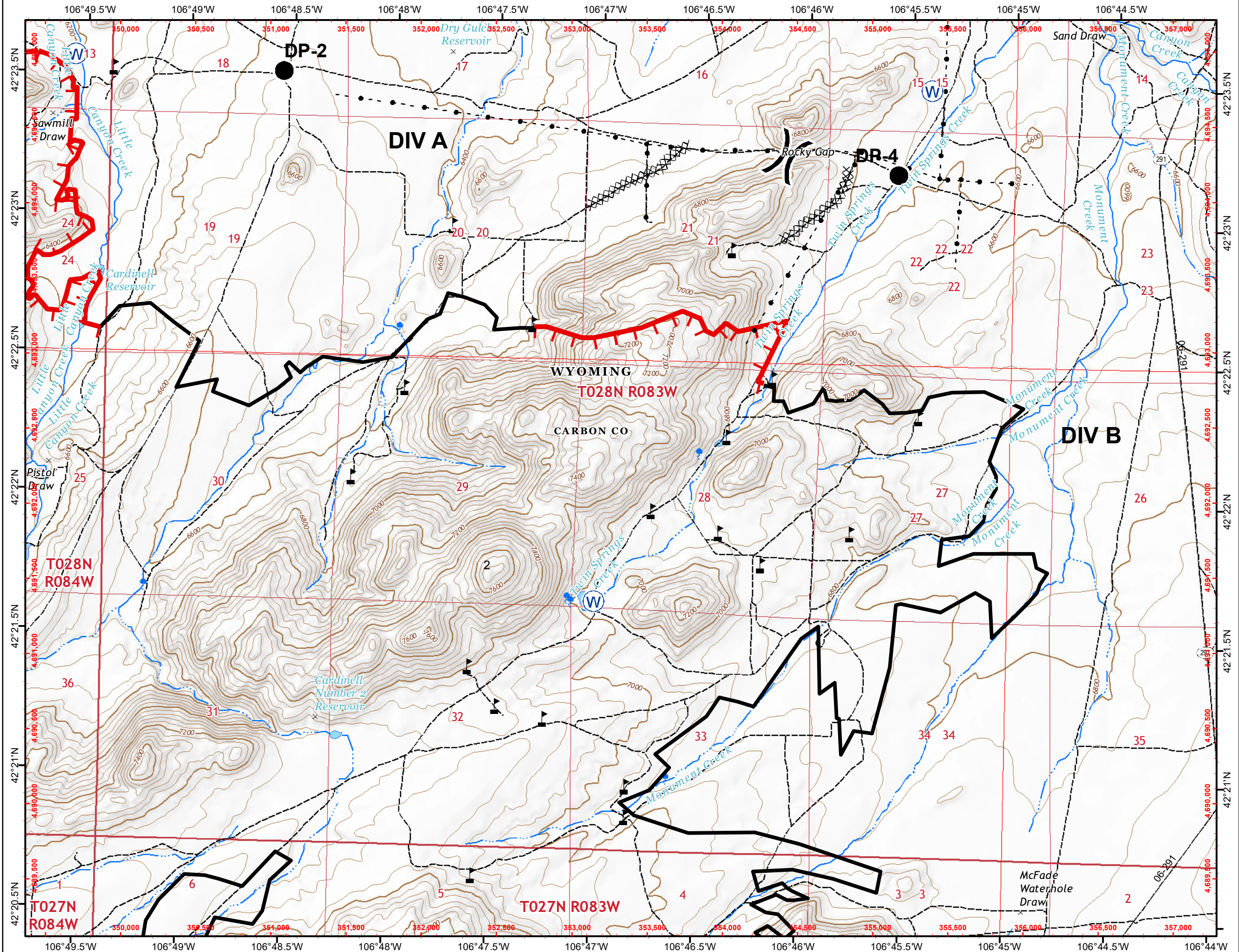


Page 2

0 0.25 0.5  
Miles



AJB : 1-Sep-2019 @ 22:01  
NAD 1983 UTM Zone 13N



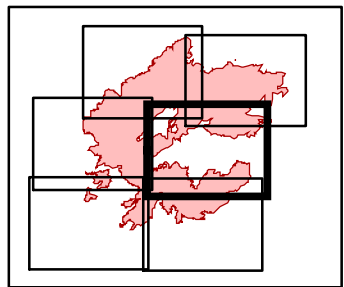
# Pedro Mountain

## IAP MAP WY-RAD-019341

Day Operations: 9/2/19  
Appx. 19,525 IR acres @  
0248 hrs on 9/1/19  
24% Contained



- Drop Point
- Uncontrolled Fire Edge
- ⊕ Fence - Cut/Damaged
- Completed Line
- ⚡ Gate
- ⊗ Completed Dozer Line
- ☢ Hazard
- H - Completed Hand Line
- Helispot
- R - Road as Completed Line
- Access or Improved Road
- ⊕ Other
- Secondary Hwy. (incl. Co.)
- BLM WY Roads NAIP 2009
- WX Mobile Weather Unit
- Ⓡ Repeater
- ⚠ Safety Zone
- Ⓢ Staging
- Ⓜ Water Source
- ⚠ Value at Risk
- ) Division Break

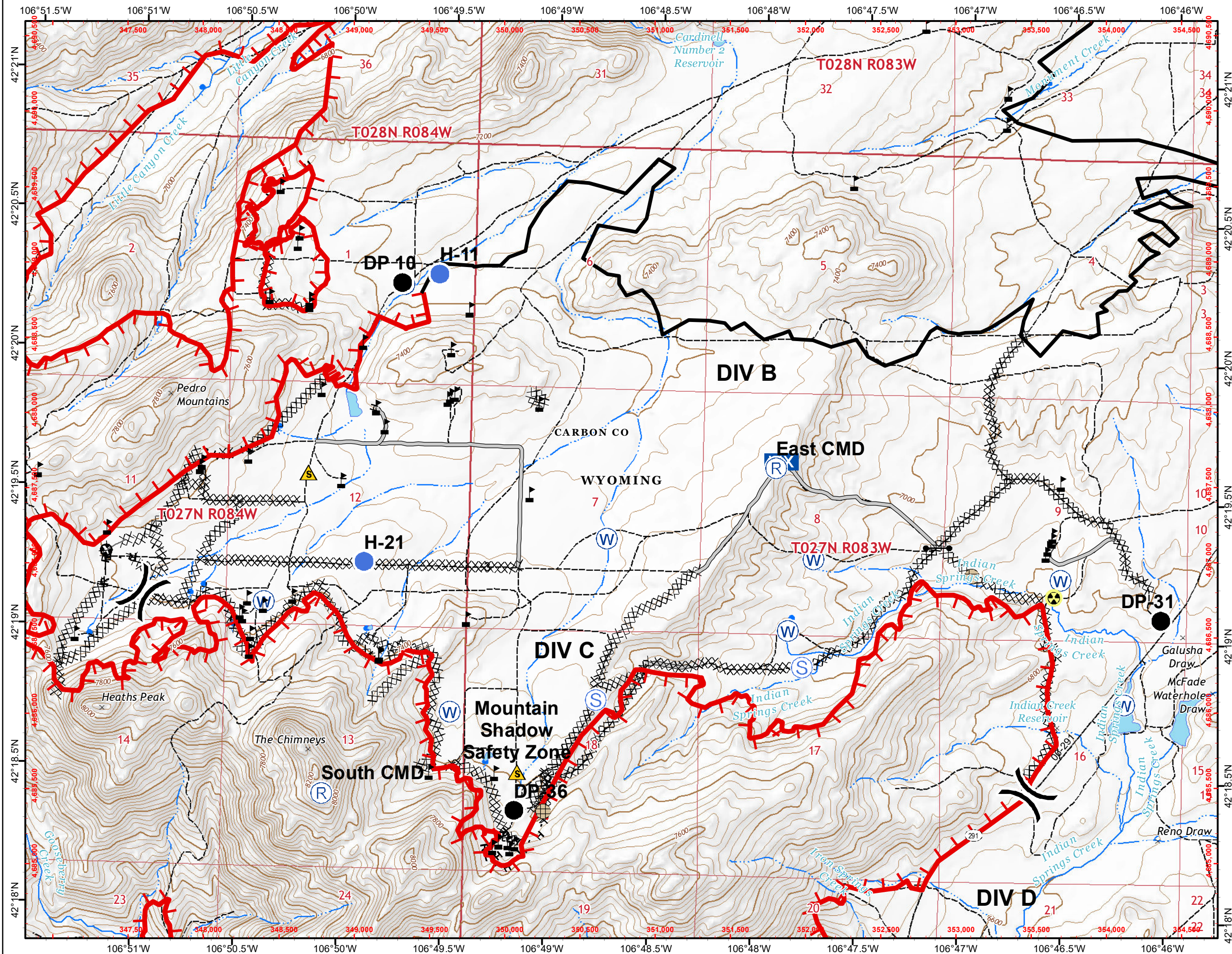


Page 3

0 0.25 0.5  
Miles



AJB : 1-Sep-2019 @ 22:02  
NAD 1983 UTM Zone 13N



# Pedro Mountain

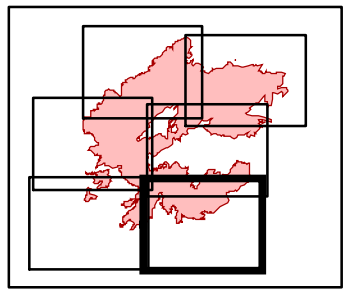
## IAP MAP

### WY-RAD-019341

Day Operations: 9/2/19  
 Appx. 19,525 IR acres @  
 0248 hrs on 9/1/19  
 24% Contained



- Drop Point
- Fence - Cut/Damaged
- Gate
- Repeater
- Safety Zone
- Water Source
- Value at Risk
- Other
- Division Break
- Uncontrolled Fire Edge
- Completed Dozer Line
- Completed Hand Line
- Road as Completed Line
- Secondary Hwy. (incl. Co.)
- BLM WY Roads NAIP 2009

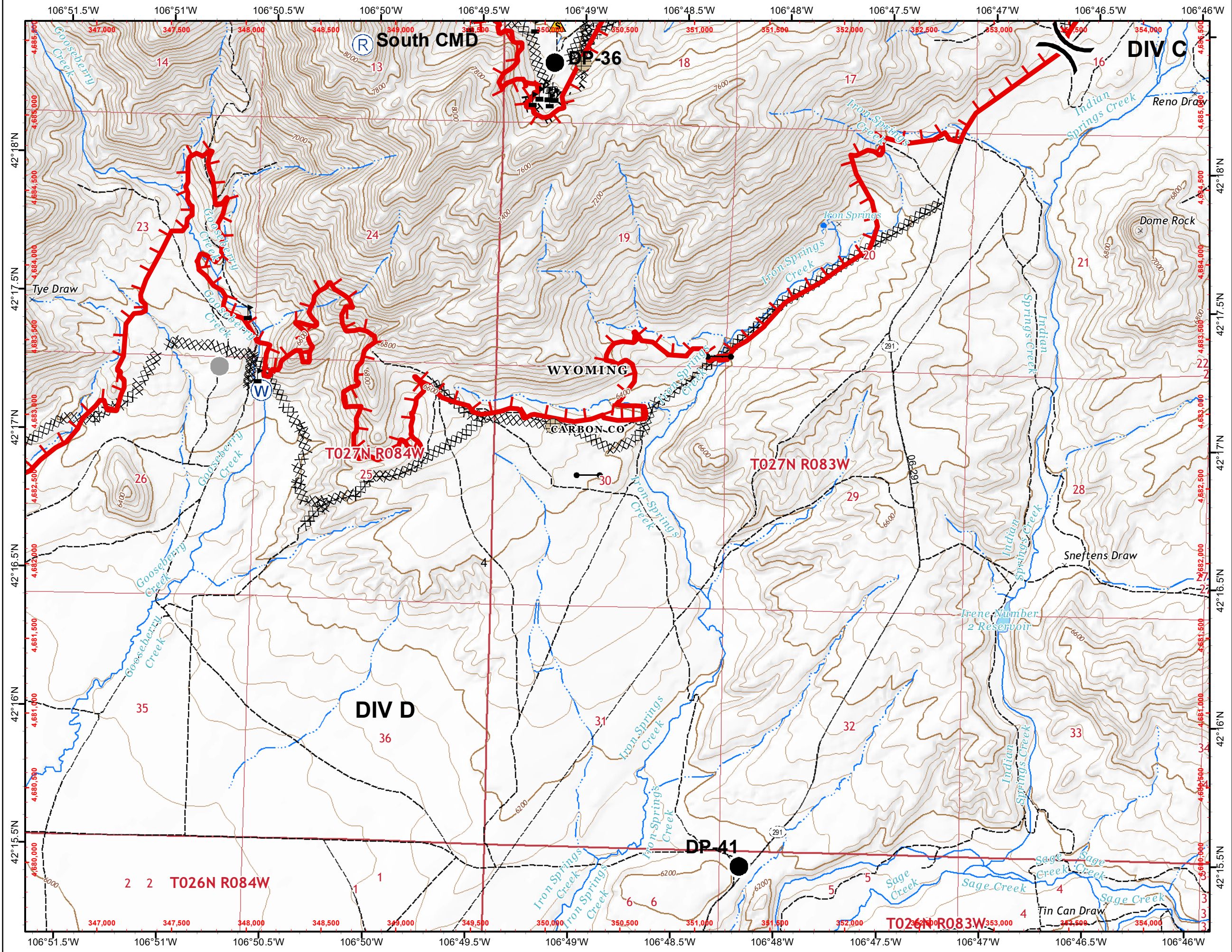


**Page 4**

0 0.25 0.5  
 Miles



AJB : 1-Sep-2019 @ 22:03  
 NAD 1983 UTM Zone 13N



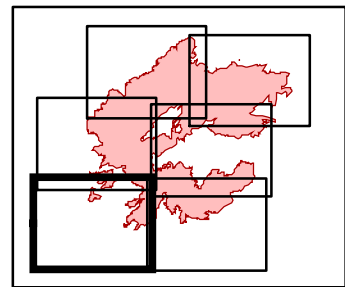
# Pedro Mountain

## IAP MAP WY-RAD-019341

Day Operations: 9/2/19  
Appx. 19,525 IR acres @  
0248 hrs on 9/1/19  
24% Contained



- Drop Point
- Uncontrolled Fire Edge
- ⊗ Completed Dozer Line
- ⊘ Fence - Cut/Damaged
- BLM WY Roads NAIP 2009

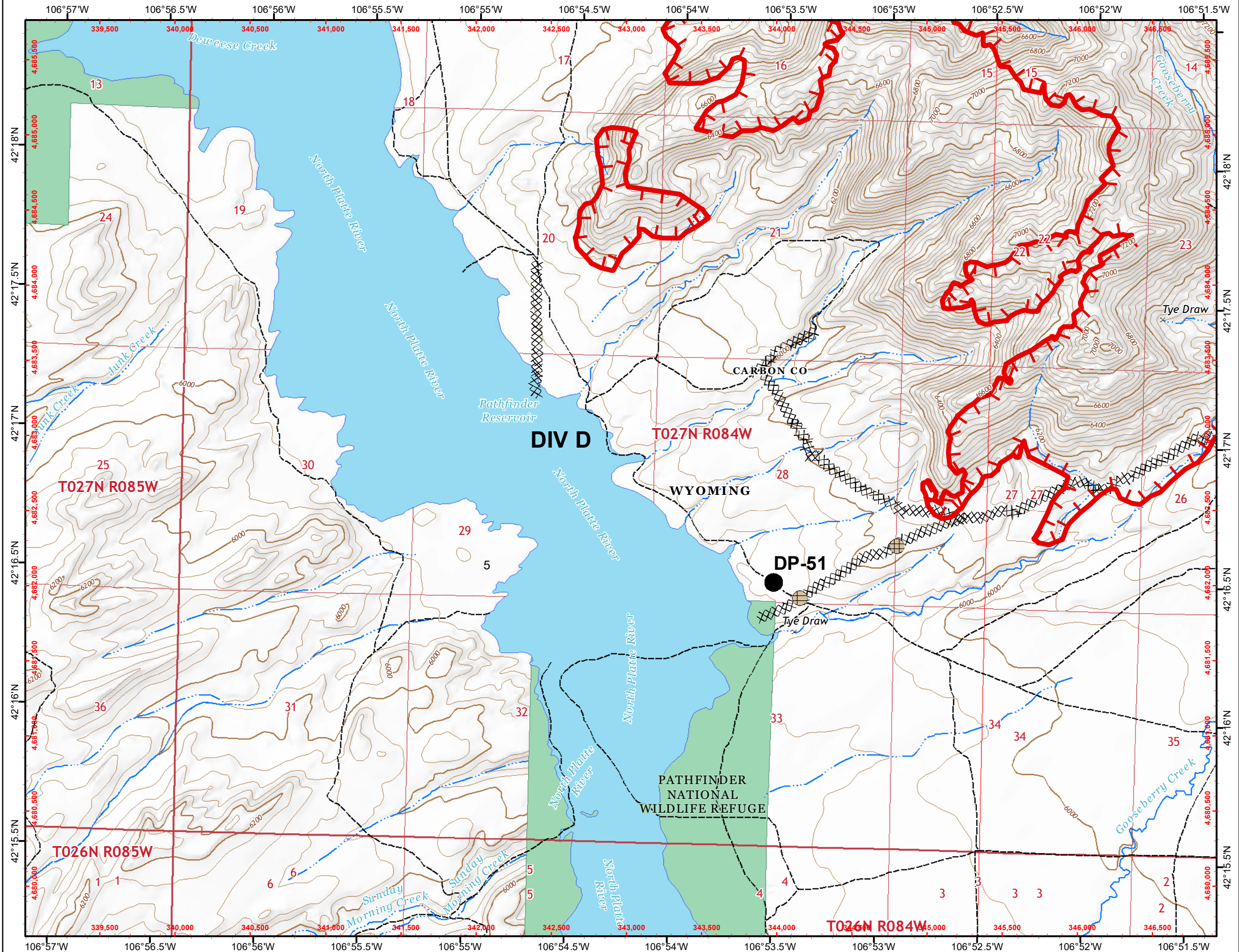


Page 5

0 0.25 0.5  
Miles



AJB : 1-Sep-2019 @ 22:04  
NAD 1983 UTM Zone 13N



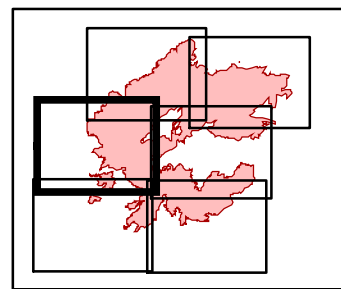
# Pedro Mountain

## IAP MAP WY-RAD-019341

Day Operations: 9/2/19  
Appx. 19,525 IR acres @  
0248 hrs on 9/1/19  
24% Contained



- Drop Point
- ⊗ Fire Origin
- Helispot
- Ⓡ Repeater
- ▲ Value at Risk
- ⌋ Uncontrolled Fire Edge
- ⊗ Completed Dozer Line
- Access or Improved Road
- ⊕ Other
- - - BLM WY Roads NAIP 2009
- ) Division Break



Page 6

0 0.25 0.5  
Miles



AJB : 1-Sep-2019 @ 22:05  
NAD 1983 UTM Zone 13N

