

Pedro Mountain

IAP MAP WY-RAD-019341

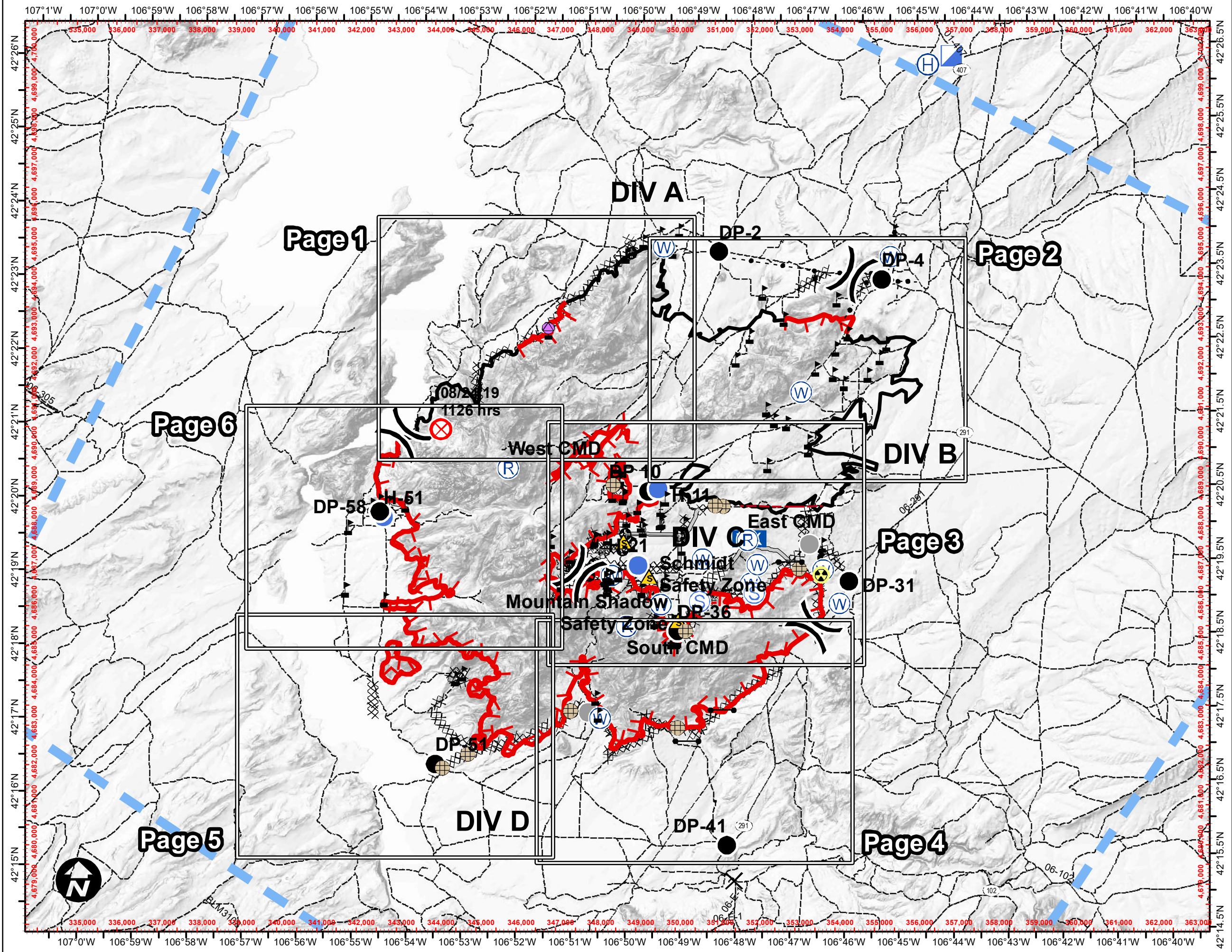
Day Operations: 9/3/19
Appx. 20,830 IR acres @
2127 hrs on 9/1/19
37% Contained



- ✕ Closure
- Drop Point
- ⊗ Fence - Cut/Damaged
- ⊗ Fire Origin
- ⚓ Gate
- ☢ Hazard
- Ⓜ Helibase
- Helispot
- ▢ Incident Command Post
- WX Mobile Weather Unit
- ⦿ Repair Point
- Ⓜ Repeater
- ⚠ Safety Zone
- Ⓢ Staging Area
- Ⓜ Water Source
- ⚠ Value at Risk
- Other
- ⌋ Division Break
- ▬ Uncontrolled Fire Edge
- ▬ Completed Line
- ⊗ Completed Dozer Line
- Ⓜ Completed Hand Line
- ▬ Road as Completed Line
- ▬ Access or Improved Road
- ▬ Temporary Flight Restriction
- ⋯ Highlighted Manmade Feature
- ▬ Fence
- ⊕ Other
- ▬ Secondary Hwy. (incl. Co.)
- ▬ BLM WY Roads NAIP 2009



AJB : 2-Sep-2019 @ 21:26
NAD 1983 UTM Zone 13N



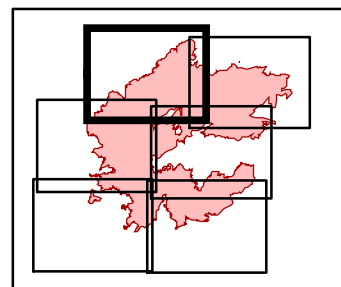
Pedro Mountain

IAP MAP WY-RAD-019341

Day Operations: 9/3/19
Appx. 20,830 IR acres @
2127 hrs on 9/1/19
37% Contained



- Fire Origin
- Uncontrolled Fire Edge
- Completed Line
- Water Source
- Completed Dozer Line
- Value at Risk
- Other
- BLM WY Roads NAIP 2009
- Division Break

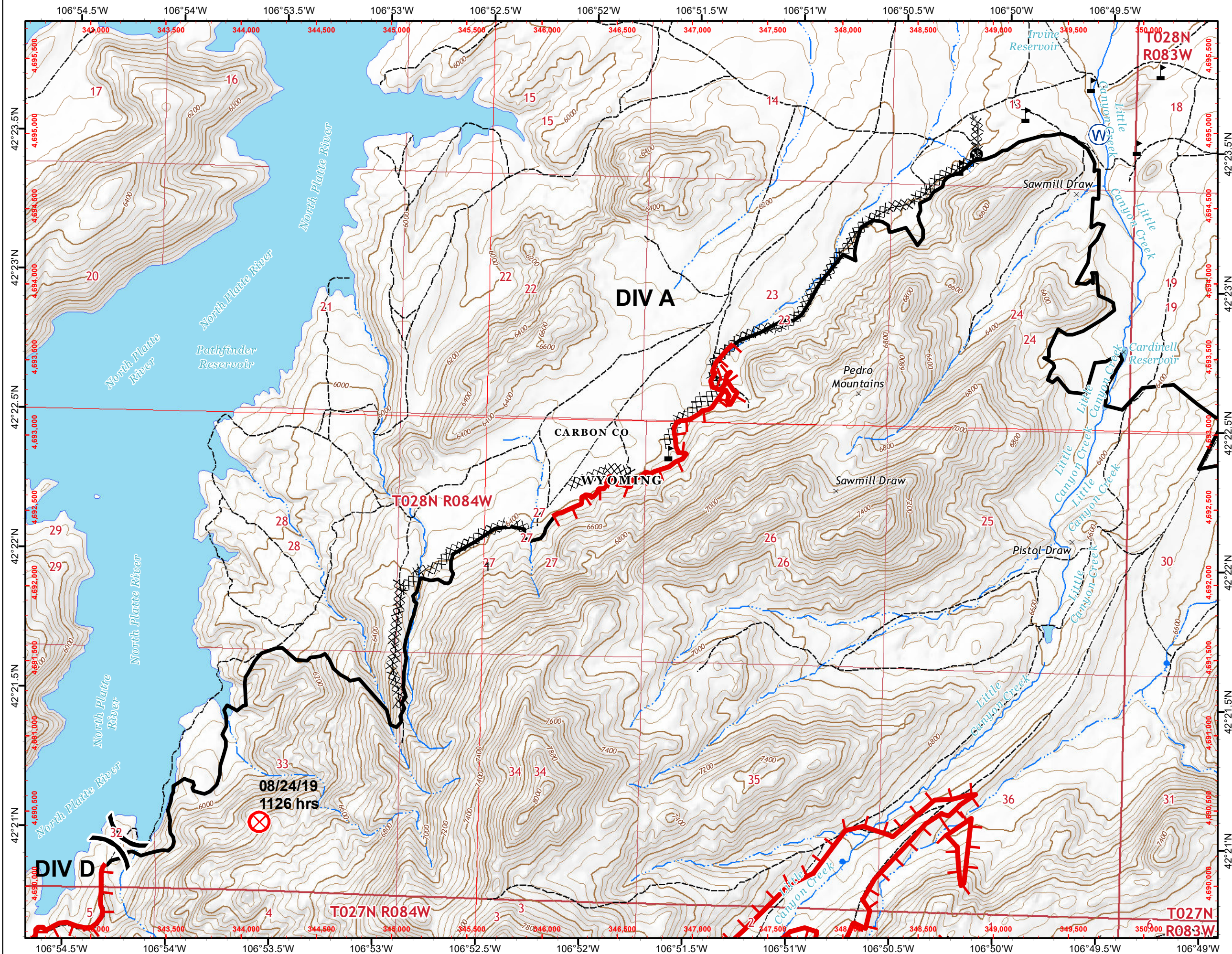


Page 1

0 0.25 0.5
Miles



AJB : 2-Sep-2019 @ 21:41
NAD 1983 UTM Zone 13N



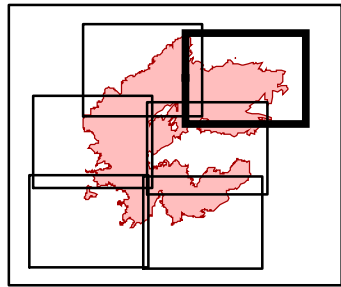
Pedro Mountain

IAP MAP WY-RAD-019341

Day Operations: 9/3/19
Appx. 20,830 IR acres @
2127 hrs on 9/1/19
37% Contained



- Drop Point
- Ⓜ Water Source
- ▲ Value at Risk
- ⎓ Division Break
- ▬ Uncontrolled Fire Edge
- ▬ Completed Line
- ⊗ Completed Dozer Line
- ⋯ Highlighted Manmade Feature
- ▬ Secondary Hw. (incl. Co.)
- ▬ BLM WY Roads NAIP 2009

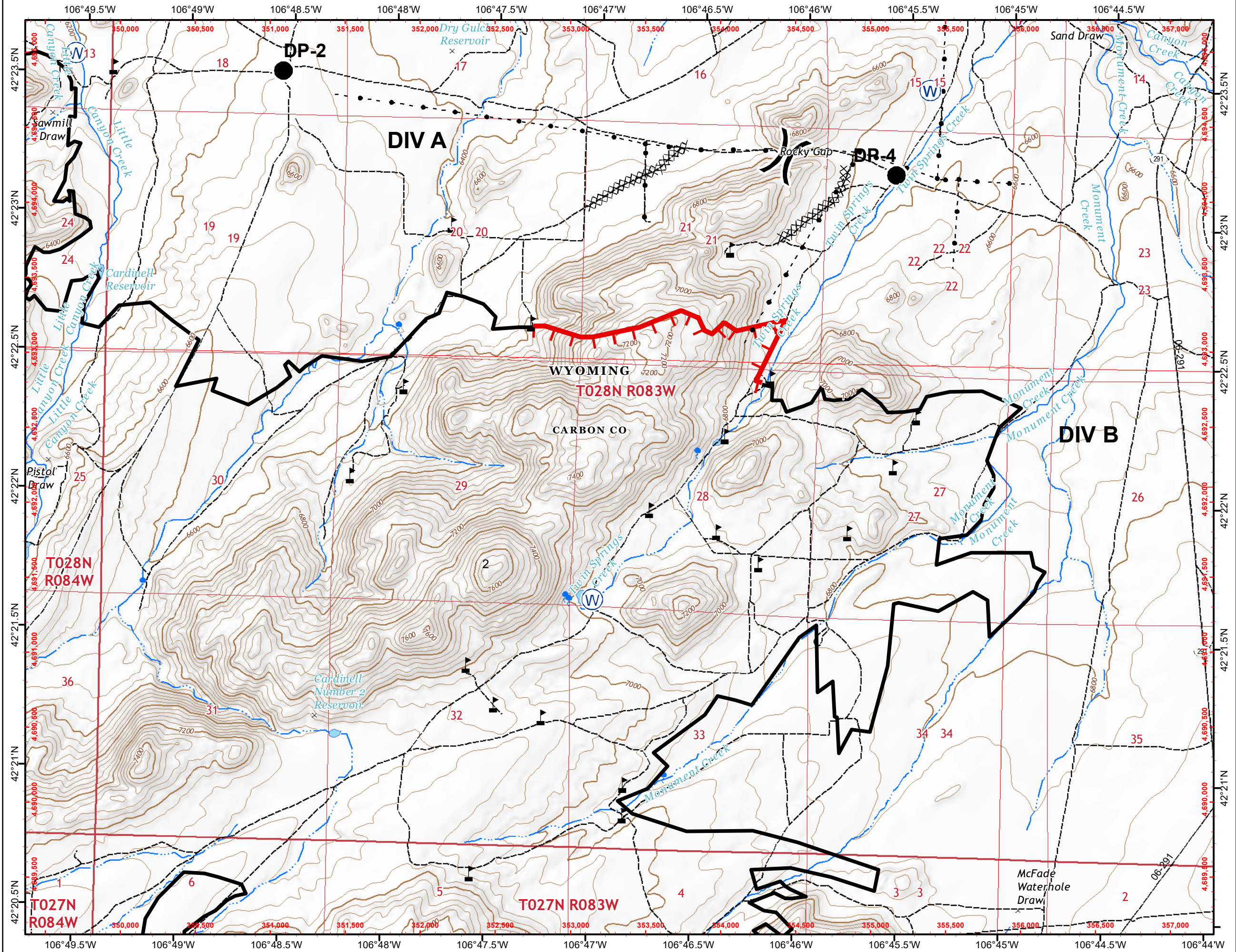


Page 2

0 0.25 0.5
Miles



AJB : 2-Sep-2019 @ 21:42
NAD 1983 UTM Zone 13N



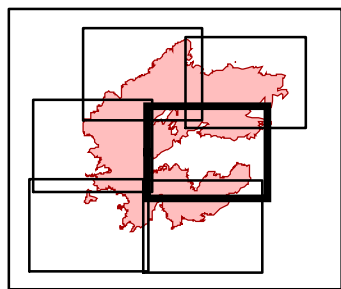
Pedro Mountain

IAP MAP WY-RAD-019341

Day Operations: 9/3/19
Appx. 20,830 IR acres @
2127 hrs on 9/1/19
37% Contained



- Drop Point
- ⊕ Fence - Cut/Damaged
- ⚡ Gate
- ☢ Hazard
- Helispot
- WX Mobile Weather Unit
- Ⓡ Repeater
- ⚠ Safety Zone
- Ⓢ Staging Area
- Ⓜ Water Source
- ⚠ Value at Risk
- ⎓ Division Break
- ▬ Uncontrolled Fire Edge
- ▬ Completed Line
- ▬ Completed Dozer Line
- H - Completed Hand Line
- R - Road as Completed Line
- ▬ Access or Improved Road
- ▬ Fence
- ⊕ Other
- ▬ Secondary Hwy. (incl. Co.)
- ▬ BLM WY Roads NAIP 2009

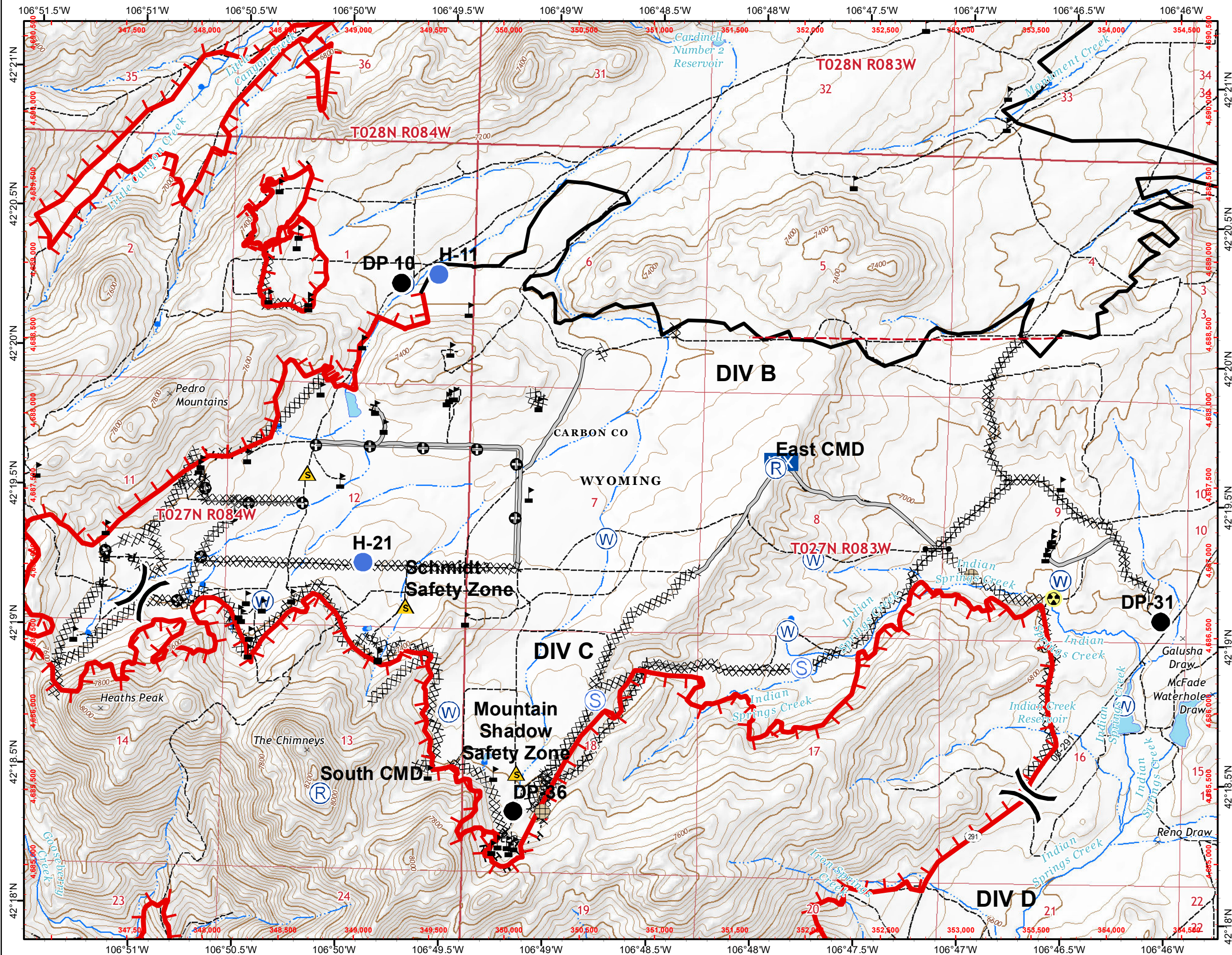


Page 3

0 0.25 0.5
Miles



AJB : 2-Sep-2019 @ 21:43
NAD 1983 UTM Zone 13N



Pedro Mountain

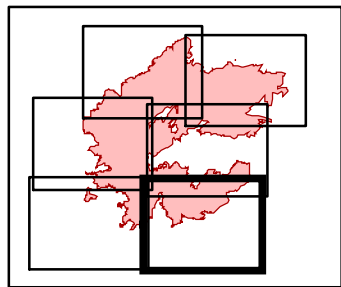
IAP MAP

WY-RAD-019341

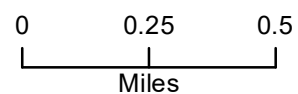
Day Operations: 9/3/19
 Appx. 20,830 IR acres @
 2127 hrs on 9/1/19
 37% Contained



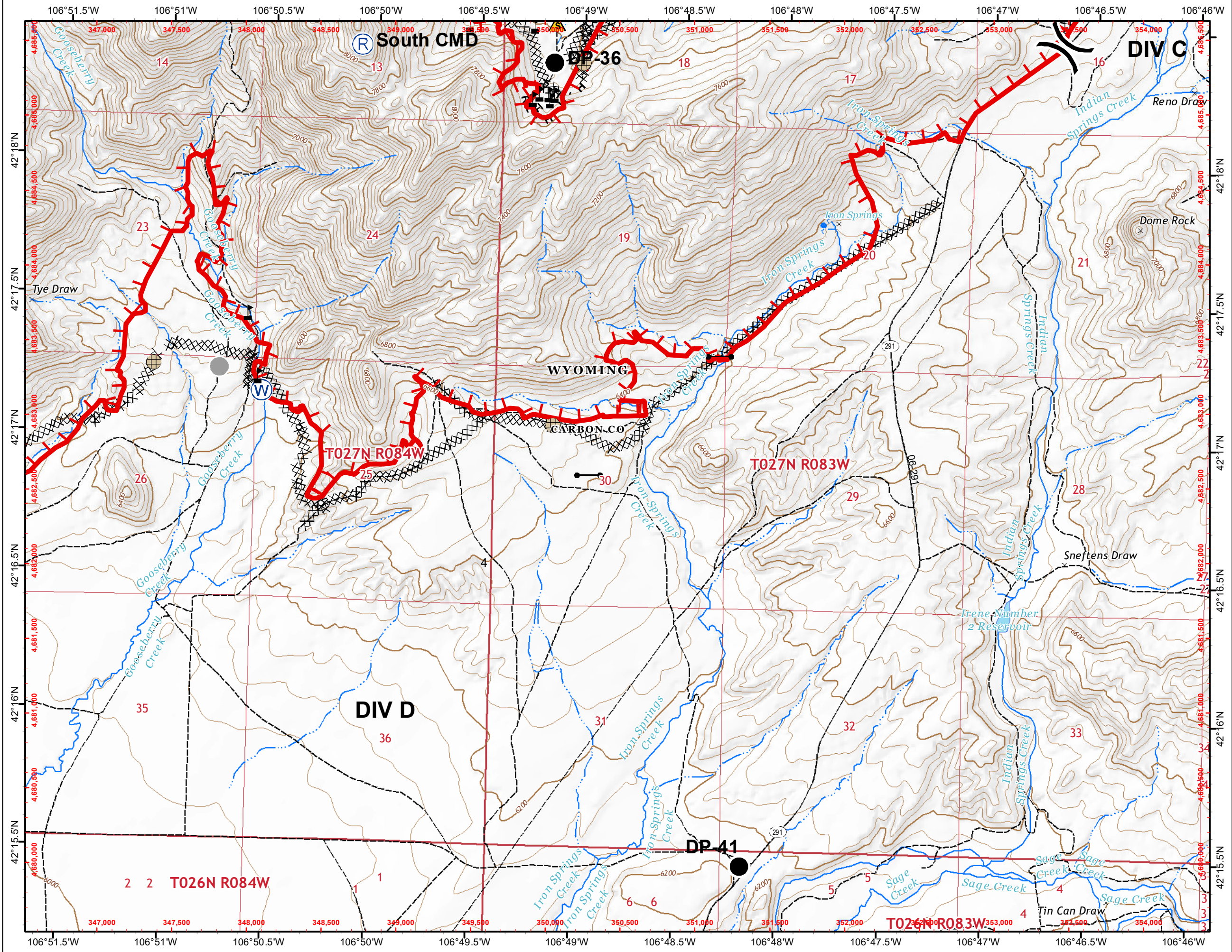
- Drop Point
- Fence - Cut/Damaged
- Gate
- Repeater
- Safety Zone
- Water Source
- Value at Risk
- Other
- Division Break
- Uncontrolled Fire Edge
- Completed Dozer Line
- Completed Hand Line
- Road as Completed Line
- Secondary Hwy. (incl. Co.)
- BLM WY Roads NAIP 2009



Page 4



AJB : 2-Sep-2019 @ 21:43
 NAD 1983 UTM Zone 13N



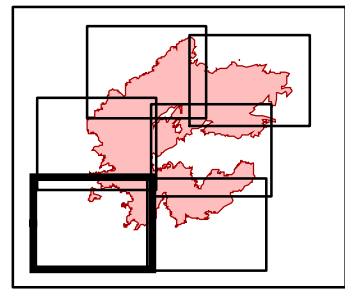
Pedro Mountain

IAP MAP WY-RAD-019341

Day Operations: 9/3/19
Appx. 20,830 IR acres @
2127 hrs on 9/1/19
37% Contained



- Drop Point
- ⊞ Uncontrolled Fire Edge
- ⊞ Fence - Cut/Damaged
- ⊞ Completed Dozer Line
- ⊞ Value at Risk
- ⊞ BLM WY Roads NAIP 2009

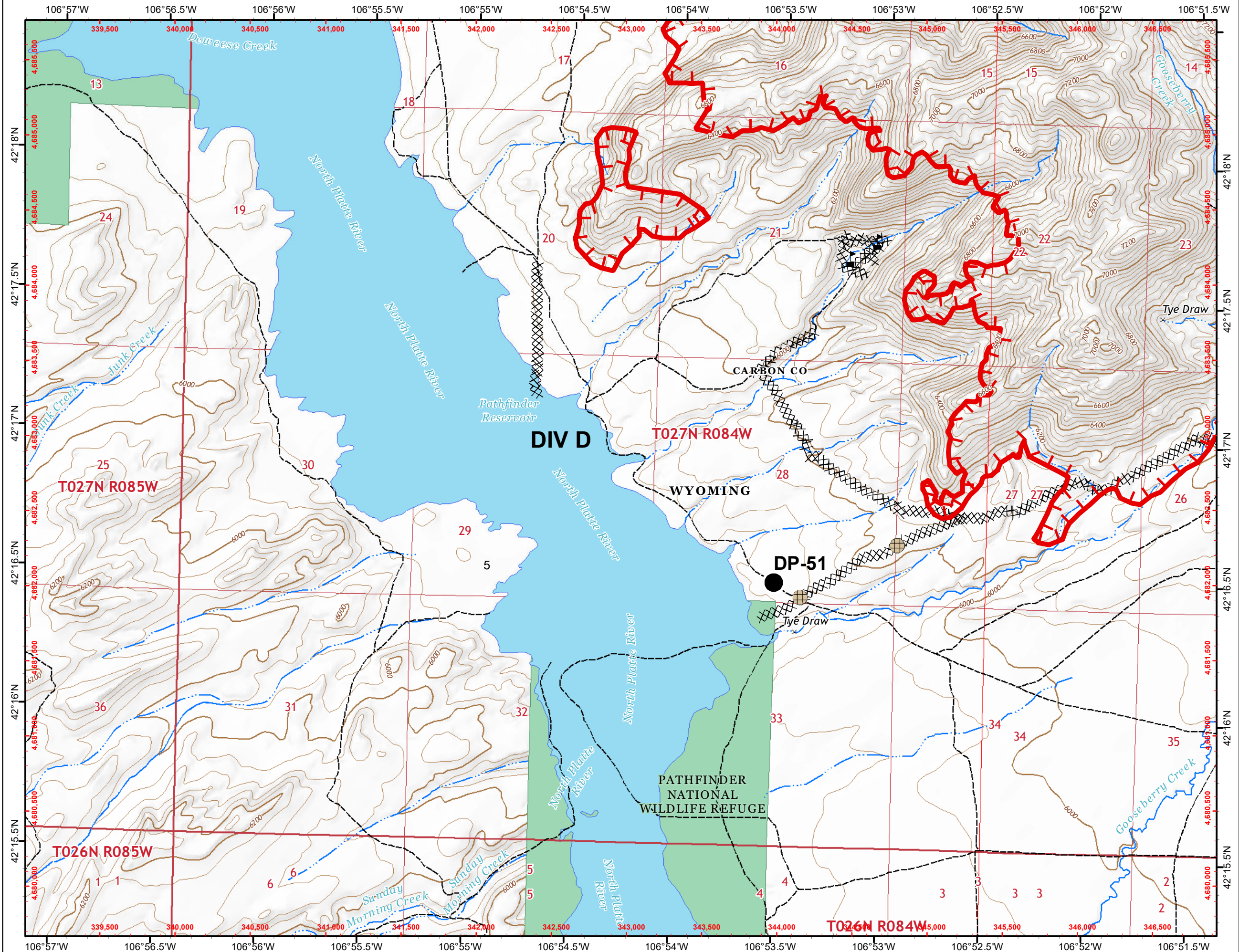


Page 5

0 0.25 0.5
Miles



AJB : 2-Sep-2019 @ 21:44
NAD 1983 UTM Zone 13N



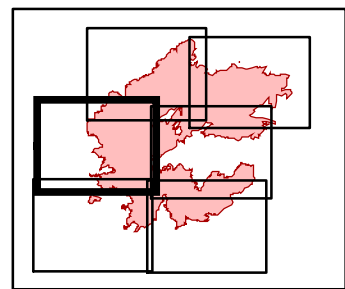
Pedro Mountain

IAP MAP WY-RAD-019341

Day Operations: 9/3/19
Appx. 20,830 IR acres @
2127 hrs on 9/1/19
37% Contained



- Drop Point
- ⊗ Fire Origin
- Helispot
- Ⓡ Repeater
- ⚠ Value at Risk
- ⎓ Division Break
- ▬ Uncontrolled Fire Edge
- ▬ Completed Line
- ⊗ Completed Dozer Line
- ▬ Access or Improved Road
- ▬ BLM WY Roads NAIP 2009



Page 6

0 0.25 0.5
Miles



AJB : 2-Sep-2019 @ 21:45
NAD 1983 UTM Zone 13N

