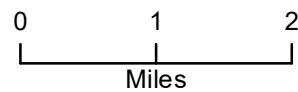


Pedro Mountain IAP MAP WY-RAD-019341

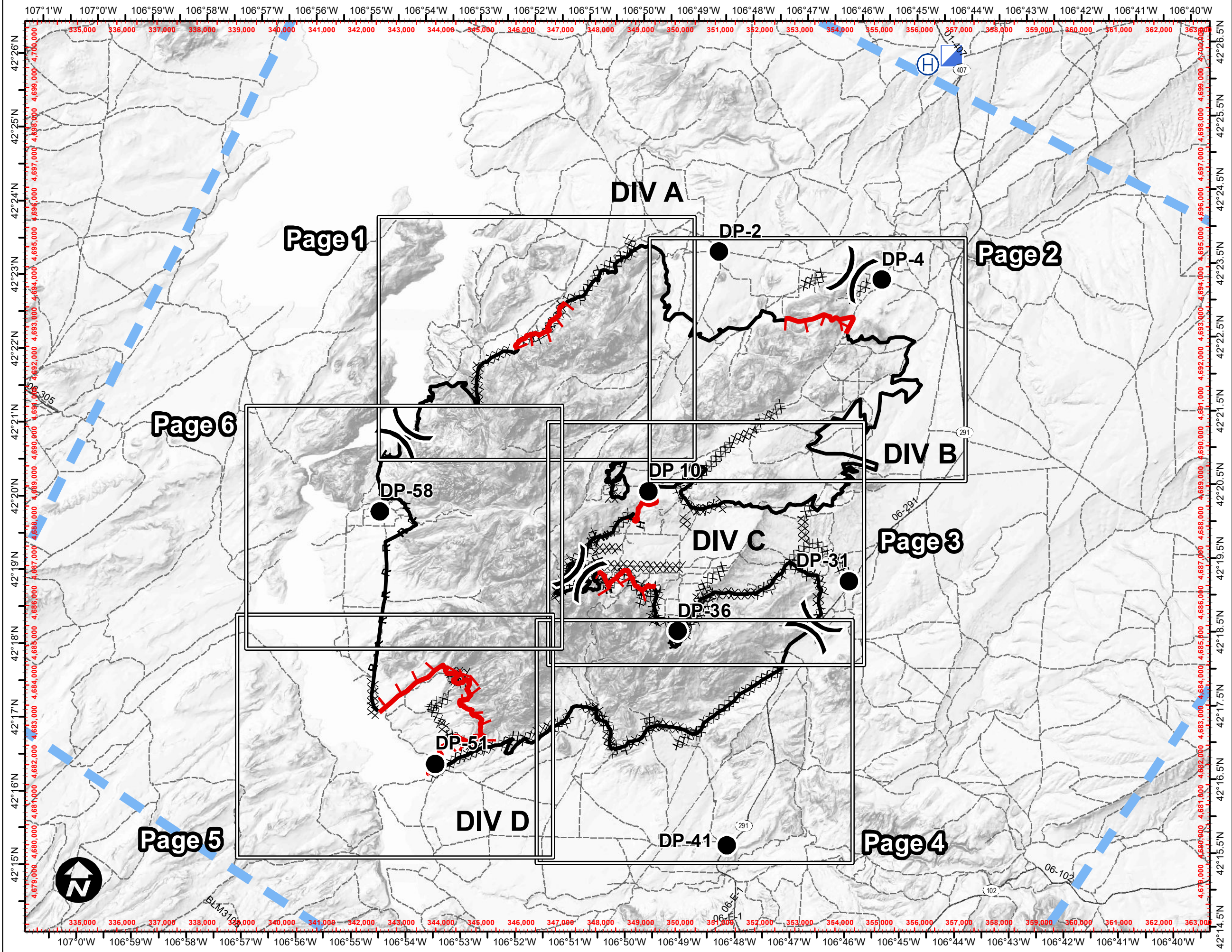
Day Operations: 9/5/19
Appx. 23,408 acres
MMA @ 0920 hrs on 9/4/19
82% Contained



- Drop Point
- H Helibase
- Incident Command Post
- Division Break
- Uncontrolled Fire Edge
- Completed Line
- Completed Dozer Line
- H - H Completed Hand Line
- R - R Road as Completed Line
- Temporary Flight Restriction
- Secondary Hwy. (incl. Co.)
- BLM WY Roads NAIP 2009



AJB : 4-Sep-2019 @ 21:05
NAD 1983 UTM Zone 13N



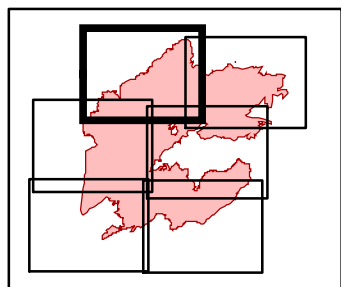
Pedro Mountain

IAP MAP WY-RAD-019341

Day Operations: 9/5/19
Appx. 23,408 acres
MMA @ 0920 hrs on 9/4/19
82% Contained



- Fire Origin
- Uncontrolled Fire Edge
- Water Source
- Completed Dozer Line
- Value at Risk
- Completed Hand Line
- Other
- BLM WY Roads NAIP 2009
- Division Break

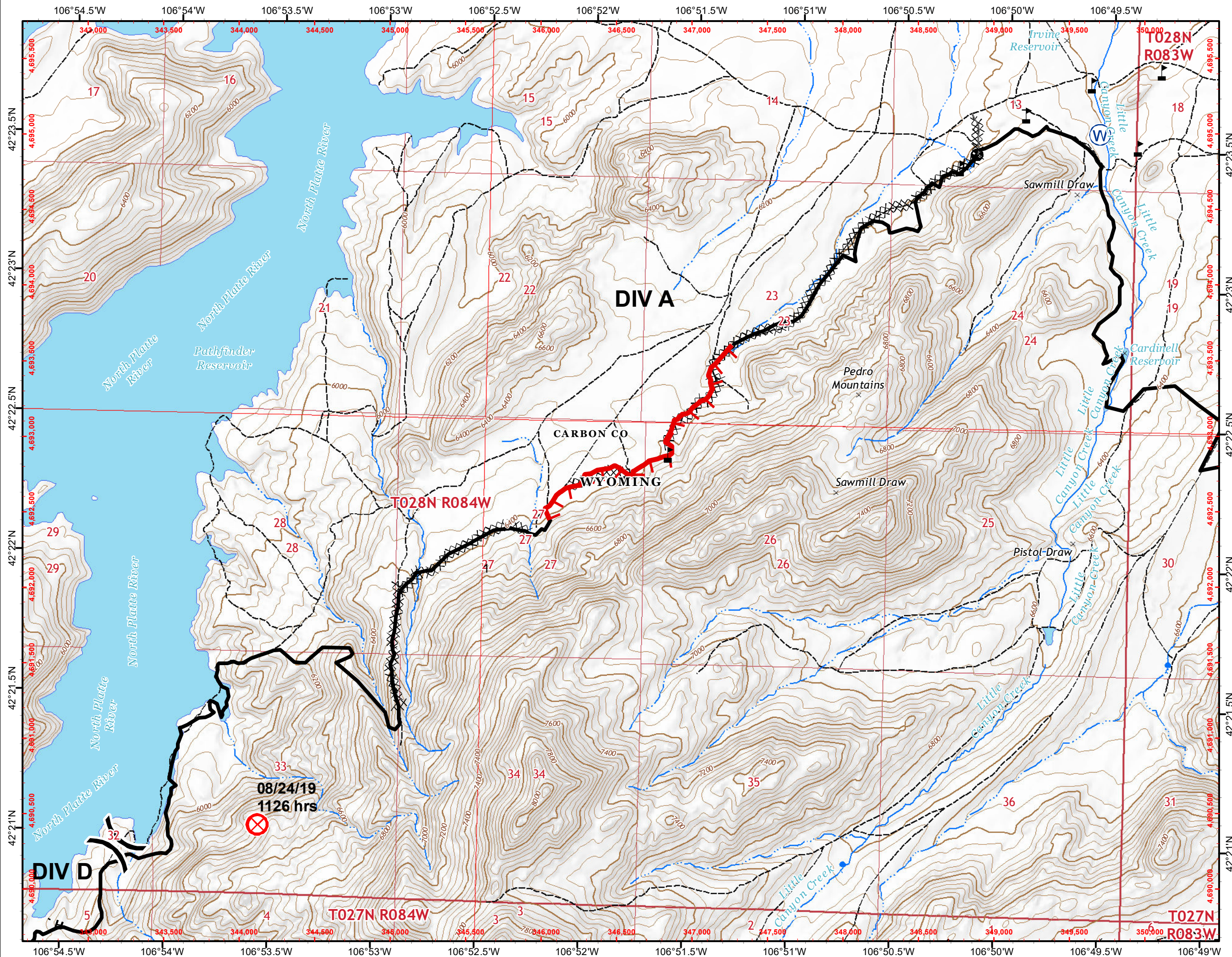


Page 1

0 0.25 0.5
Miles



AJB : 4-Sep-2019 @ 21:23
NAD 1983 UTM Zone 13N



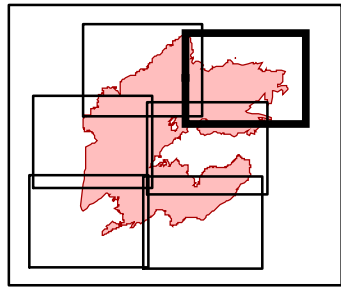
Pedro Mountain

IAP MAP WY-RAD-019341

Day Operations: 9/5/19
Appx. 23,408 acres
MMA @ 0920 hrs on 9/4/19
82% Contained



- Drop Point
- Hot Spot
- ⊙ Water Source
- ⚠ Value at Risk
- ⌋ Division Break
- ▭ Uncontrolled Fire Edge
- Completed Line
- ⊗ Completed Dozer Line
- - - Highlighted Manmade Feature
- ⊕ Other
- Secondary Hwy. (incl. Co.)
- - - BLM WY Roads NAIP 2009

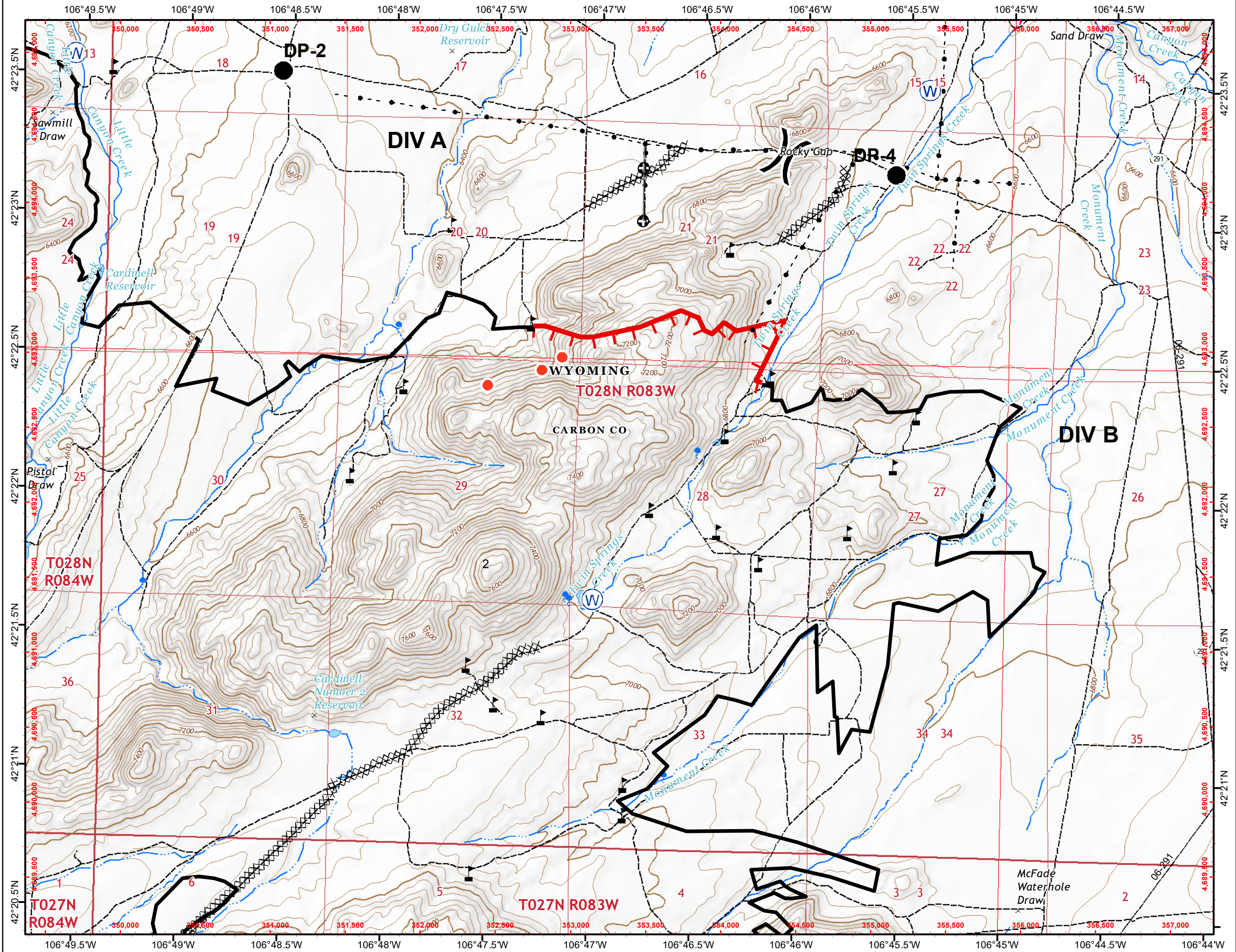


Page 2

0 0.25 0.5
Miles



AJB : 4-Sep-2019 @ 21:24
NAD 1983 UTM Zone 13N



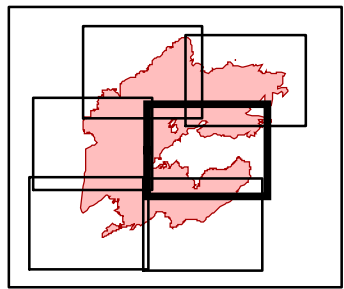
Pedro Mountain

IAP MAP WY-RAD-019341

Day Operations: 9/5/19
Appx. 23,408 acres
MMA @ 0920 hrs on 9/4/19
82% Contained



- Drop Point
- ⊕ Fence - Cut/Damaged
- ⚡ Gate
- ☢ Hazard
- Helispot
- WX Mobile Weather Unit
- Ⓡ Repeater
- ⚠ Safety Zone
- Ⓢ Staging Area
- Ⓜ Water Source
- ⚠ Value at Risk
- ⎵ Division Break
- ▬ Uncontrolled Fire Edge
- ▬ Completed Line
- ⊗ Completed Dozer Line
- H - Completed Hand Line
- R - Road as Completed Line
- ▬ Access or Improved Road
- ▬ Fence
- ⊕ Other
- ▬ Secondary Hwy. (incl. Co.)
- ▬ BLM WY Roads NAIP 2009

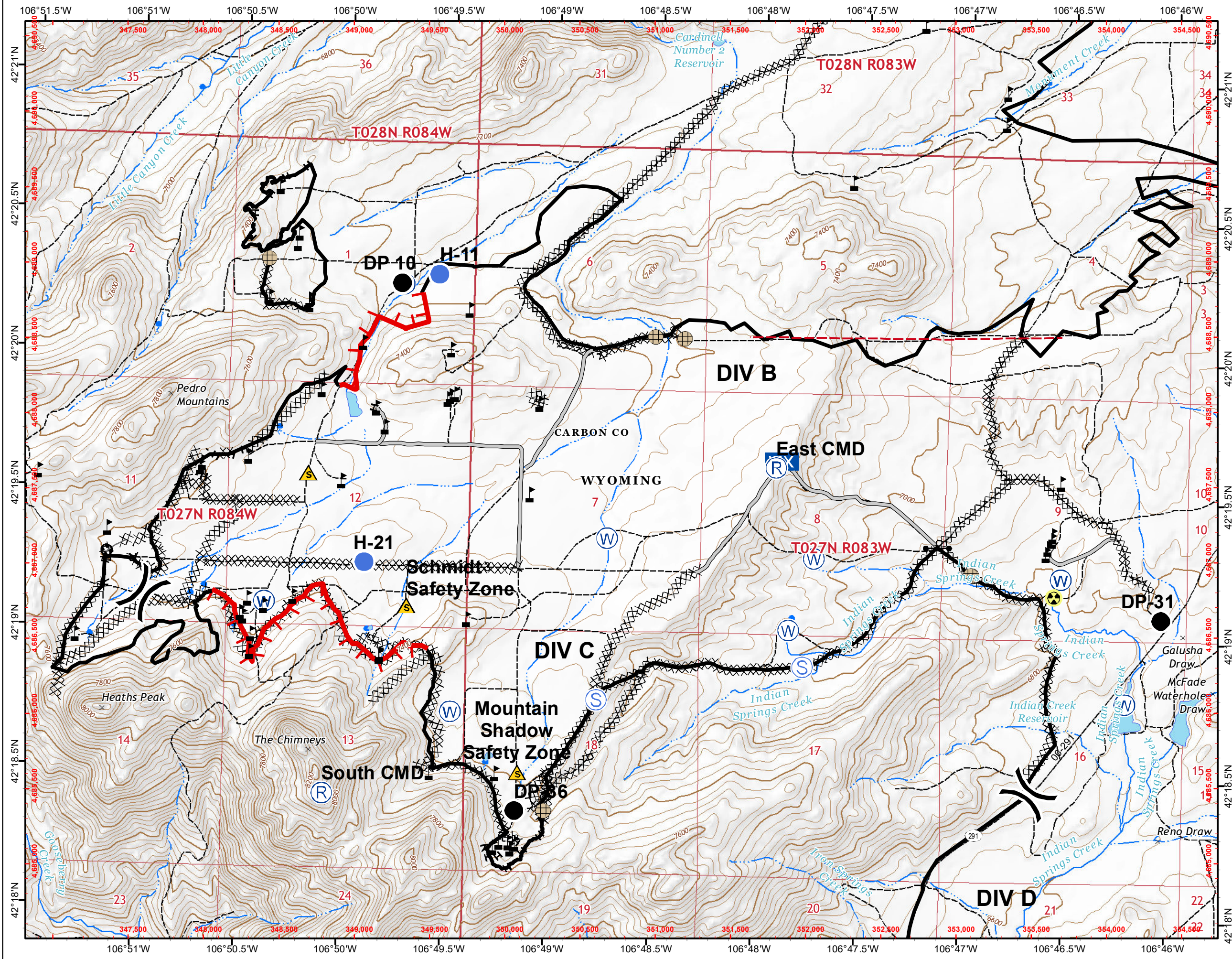


Page 3

0 0.25 0.5
Miles



AJB : 4-Sep-2019 @ 21:25
NAD 1983 UTM Zone 13N



Pedro Mountain

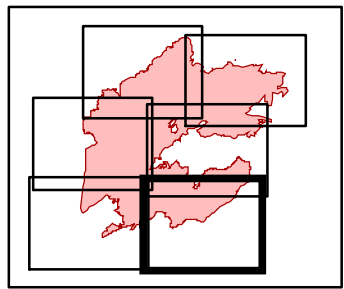
IAP MAP

WY-RAD-019341

Day Operations: 9/5/19
 Appx. 23,408 acres
 MMA @ 0920 hrs on 9/4/19
 82% Contained



- Drop Point
- Fence - Cut/Damaged
- Gate
- Repeater
- Safety Zone
- Water Source
- Value at Risk
- Other
- Division Break
- Completed Line
- Completed Dozer Line
- Completed Hand Line
- Road as Completed Line
- Fence
- Secondary Hwy. (incl. Co.)
- BLM WY Roads NAIP 2009

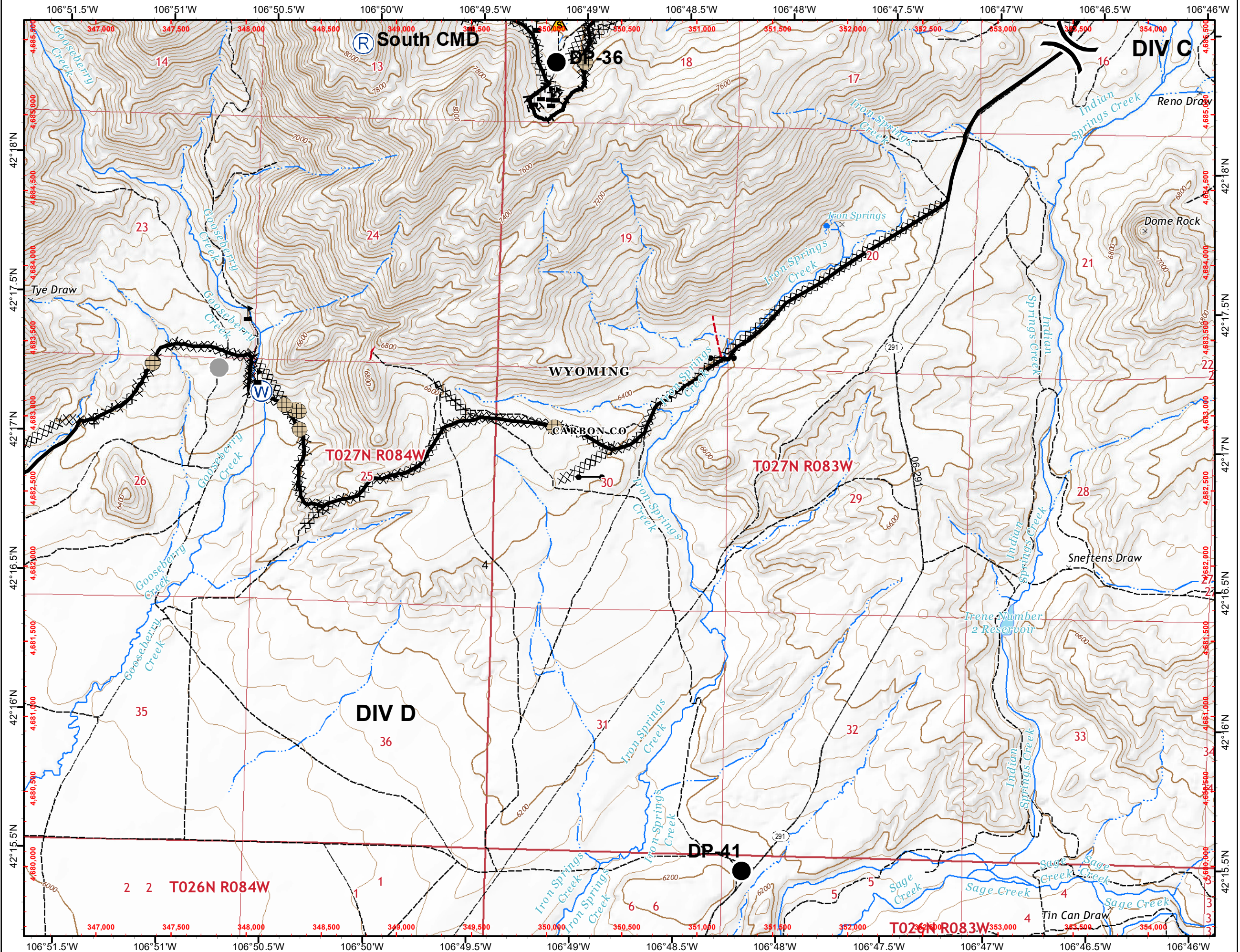


Page 4

0 0.25 0.5
 Miles



AJB : 4-Sep-2019 @ 21:26
 NAD 1983 UTM Zone 13N



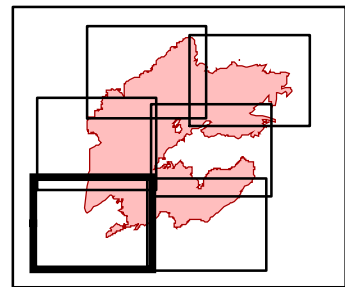
Pedro Mountain

IAP MAP WY-RAD-019341

Day Operations: 9/5/19
Appx. 23,408 acres
MMA @ 0920 hrs on 9/4/19
82% Contained



- Drop Point
- ⊗ Fence - Cut/Damaged
- ⚠ Value at Risk
- ▭ Uncontrolled Fire Edge
- Completed Line
- ⊗ Completed Dozer Line
- R - Road as Completed Line
- Fence
- - - BLM WY Roads NAIP 2009

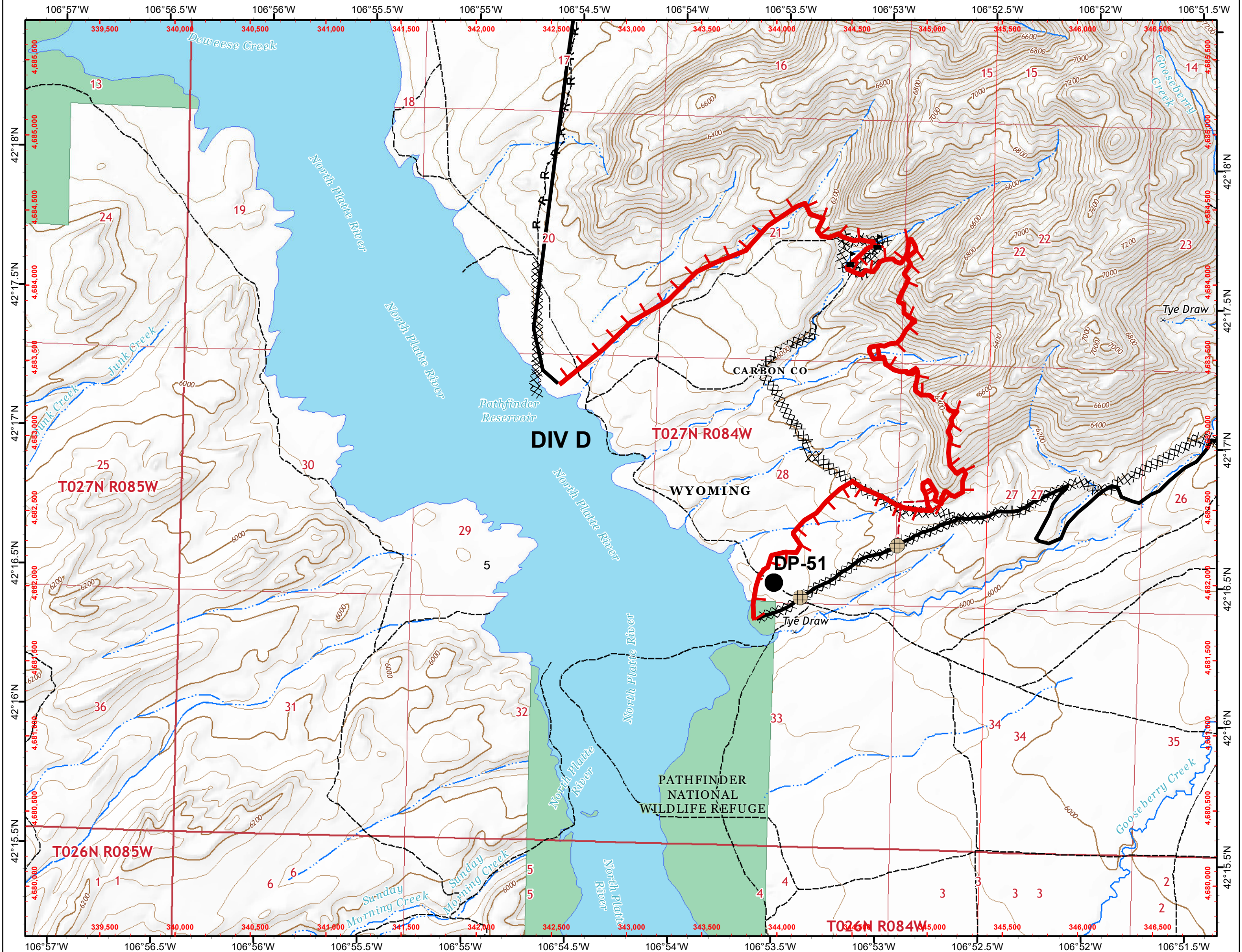


Page 5

0 0.25 0.5
Miles



AJB : 4-Sep-2019 @ 21:27
NAD 1983 UTM Zone 13N



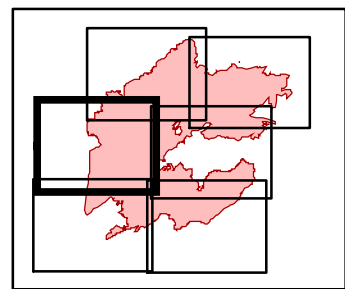
Pedro Mountain

IAP MAP WY-RAD-019341

Day Operations: 9/5/19
Appx. 23,408 acres
MMA @ 0920 hrs on 9/4/19
82% Contained



- Drop Point
- ⊗ Fence - Cut/Damaged
- ⊗ Fire Origin
- Helispot
- Ⓡ Repeater
- ⚠ Value at Risk
- ⌋ Division Break
- Completed Line
- XXXX Completed Dozer Line
- H - Completed Hand Line
- R - Road as Completed Line
- Access or Improved Road
- - - BLM WY Roads NAIP 2009



Page 6

0 0.25 0.5
Miles



AJB : 4-Sep-2019 @ 21:28
NAD 1983 UTM Zone 13N

