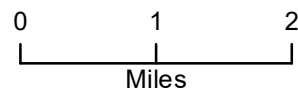


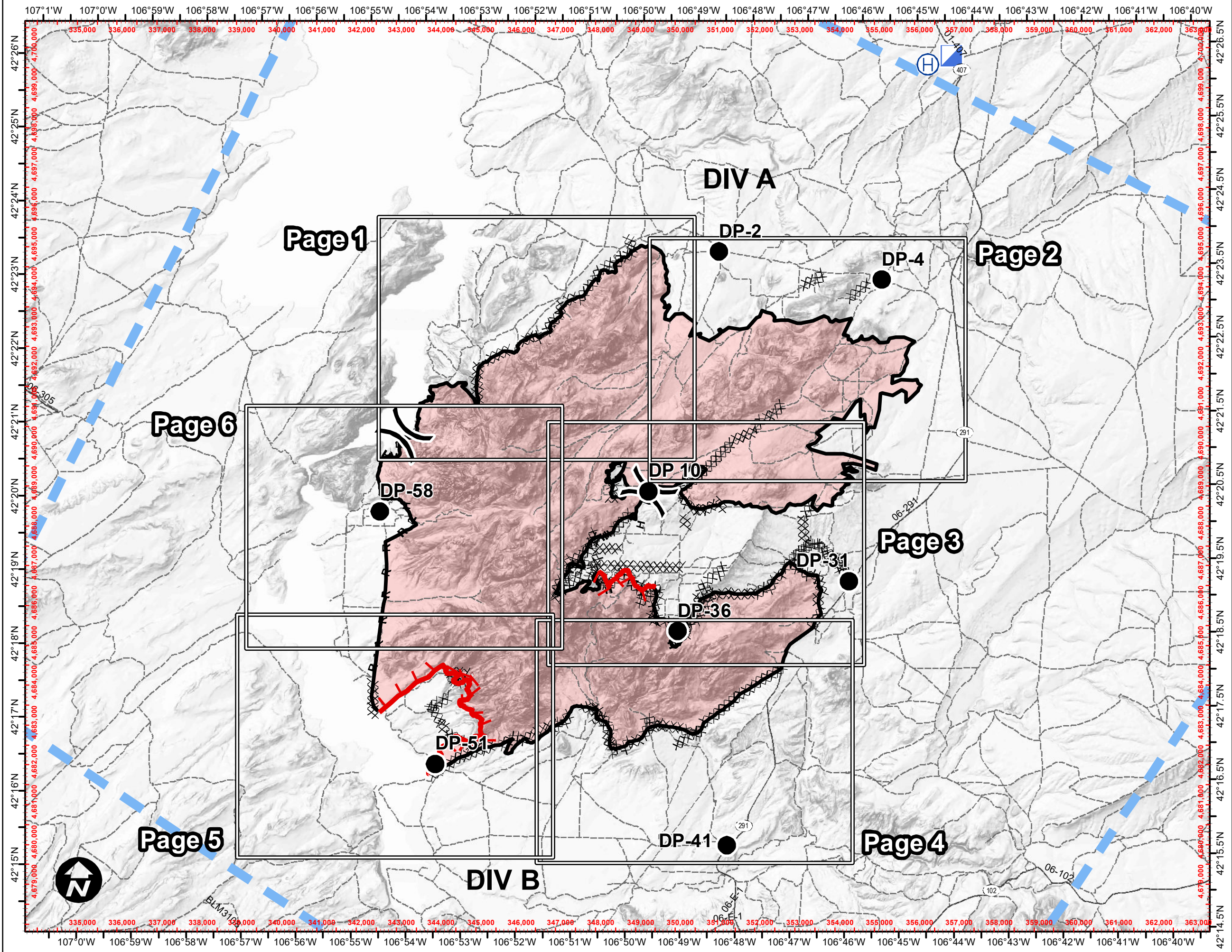
Pedro Mountain IAP MAP WY-RAD-019341

9/6/19 - 9/10/19
Appx. 23,408 acres
MMA @ 0920 hrs on 9/4/19
88% Contained

- Drop Point
- H Helibase
- Incident Command Post
- Division Break
- Uncontrolled Fire Edge
- Completed Line
- Completed Dozer Line
- H - H Completed Hand Line
- R - R Road as Completed Line
- Temporary Flight Restriction
- Secondary Hwy. (incl. Co.)
- BLM WY Roads NAIP 2009



AJB : 5-Sep-2019 @ 18:09
NAD 1983 UTM Zone 13N

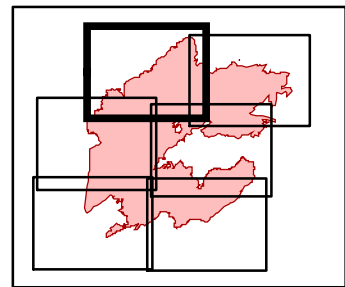


Pedro Mountain

IAP MAP WY-RAD-019341

9/6/19 - 9/10/19
Appx. 23,408 acres
MMA @ 0920 hrs on 9/4/19
88% Contained

- Fire Origin
- Water Source
- Value at Risk
- Completed Line
- BLM WY Roads NAIP 2009
- Wildfire Daily Fire Perimeter
- Completed Dozer Line
- Completed Hand Line
- Road as Completed Line
- Other
- Division Break

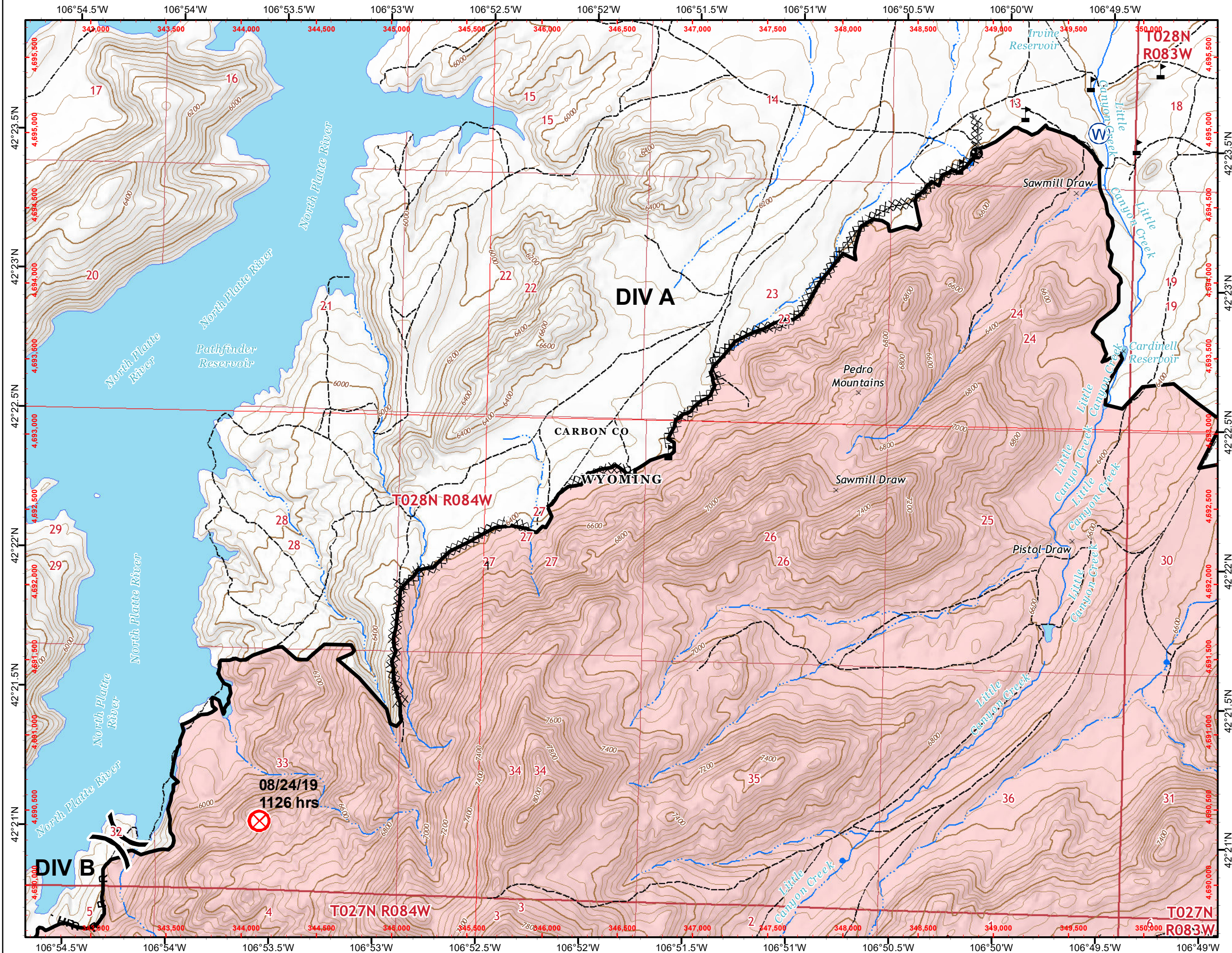


Page 1

0 0.25 0.5
Miles



AJB : 5-Sep-2019 @ 18:10
NAD 1983 UTM Zone 13N














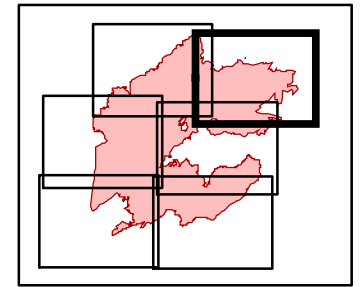
Pedro Mountain

IAP MAP

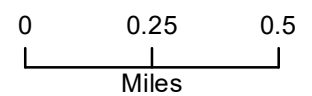
WY-RAD-019341

9/6/19 - 9/10/19
 Appx. 23,408 acres
 MMA @ 0920 hrs on 9/4/19
 88% Contained

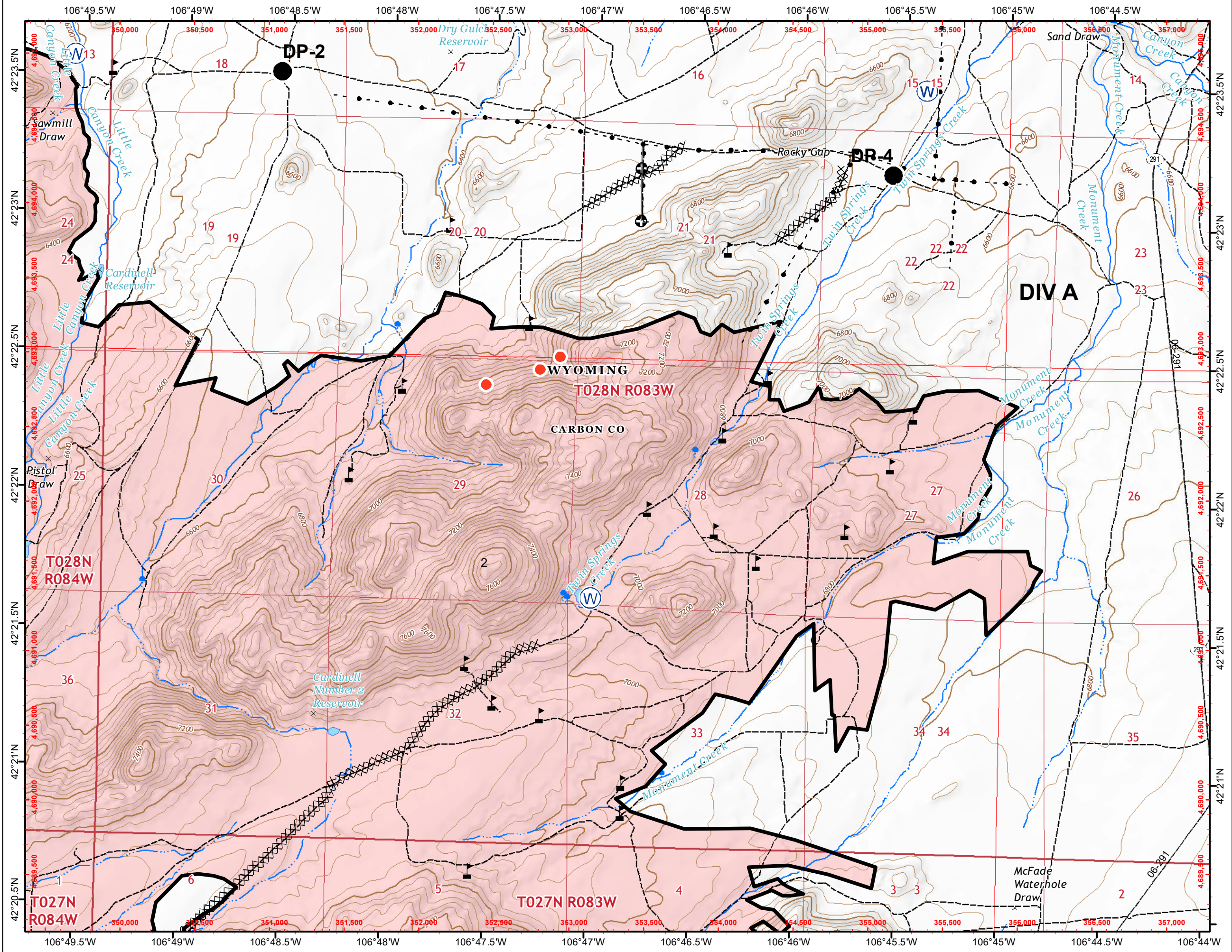
-  Drop Point
-  Hot Spot
-  Water Source
-  Value at Risk
-  Completed Line
-  Completed Dozer Line
-  Highlighted Manmade Feature
-  Other
-  Secondary Hwy. (incl. Co.)
-  BLM WY Roads NAIP 2009
-  Wildfire Daily Fire Perimeter



Page 2



AJB : 5-Sep-2019 @ 18:11
 NAD 1983 UTM Zone 13N

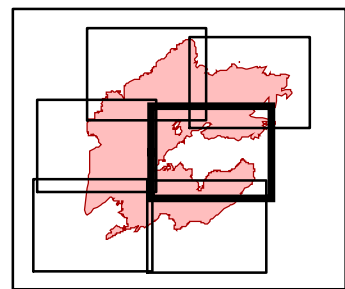


Pedro Mountain

IAP MAP WY-RAD-019341

9/6/19 - 9/10/19
Appx. 23,408 acres
MMA @ 0920 hrs on 9/4/19
88% Contained

- Drop Point
- ⊗ Fence - Cut/Damaged
- ⚡ Gate
- ☠ Hazard
- Helispot
- WX Mobile Weather Unit
- ⚠ Safety Zone
- Ⓢ Staging Area
- Ⓜ Water Source
- ⚠ Value at Risk
- ⌋ Division Break
- ▬ Uncontrolled Fire Edge
- ▬ Completed Line
- ▬ Completed Dozer Line
- H - Completed Hand Line
- R - Road as Completed Line
- ▬ Access or Improved Road
- ▬ Fence
- ⊕ Other
- ▬ Secondary Hwy. (incl. Co.)
- ▬ BLM WY Roads NAIP 2009
- ▬ Wildfire Daily Fire Perimeter

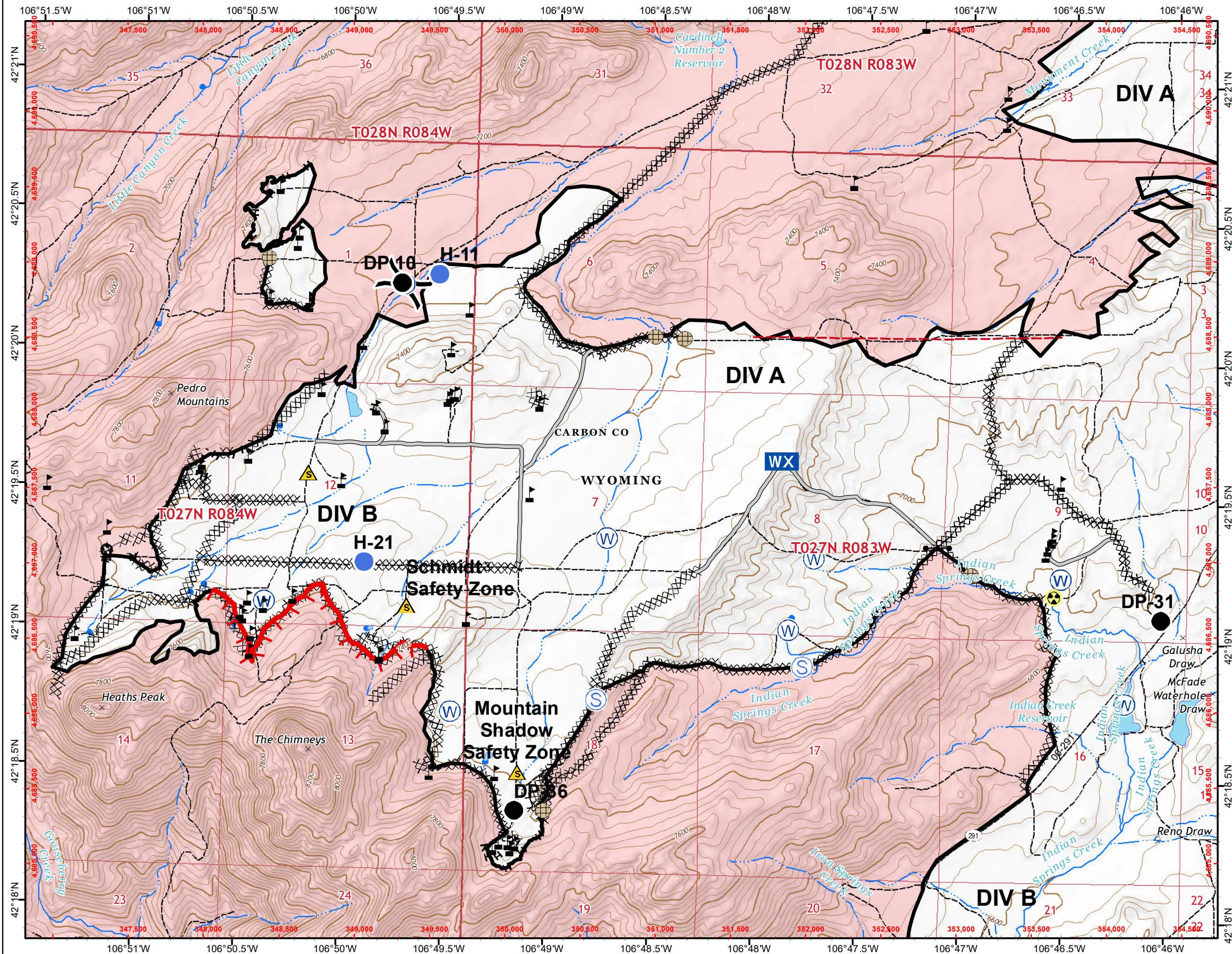


Page 3

0 0.25 0.5
Miles



AJB : 5-Sep-2019 @ 18:11
NAD 1983 UTM Zone 13N



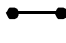








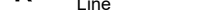
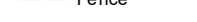
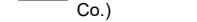
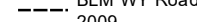


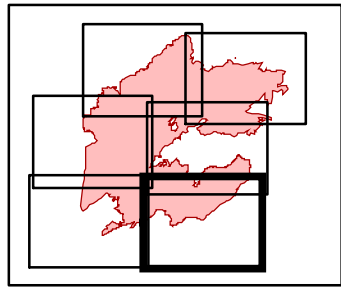
Pedro Mountain

IAP MAP

WY-RAD-019341

9/6/19 - 9/10/19
 Appx. 23,408 acres
 MMA @ 0920 hrs on 9/4/19
 88% Contained

-  Drop Point
-  Fence - Cut/Damaged
-  Gate
-  Safety Zone
-  Water Source
-  Value at Risk
-  Other
-  Completed Line
-  Completed Dozer Line
-  Completed Hand Line
-  Road as Completed Line
-  Fence
-  Secondary Hwy. (incl. Co.)
-  BLM WY Roads NAIP 2009
-  Wildfire Daily Fire Perimeter

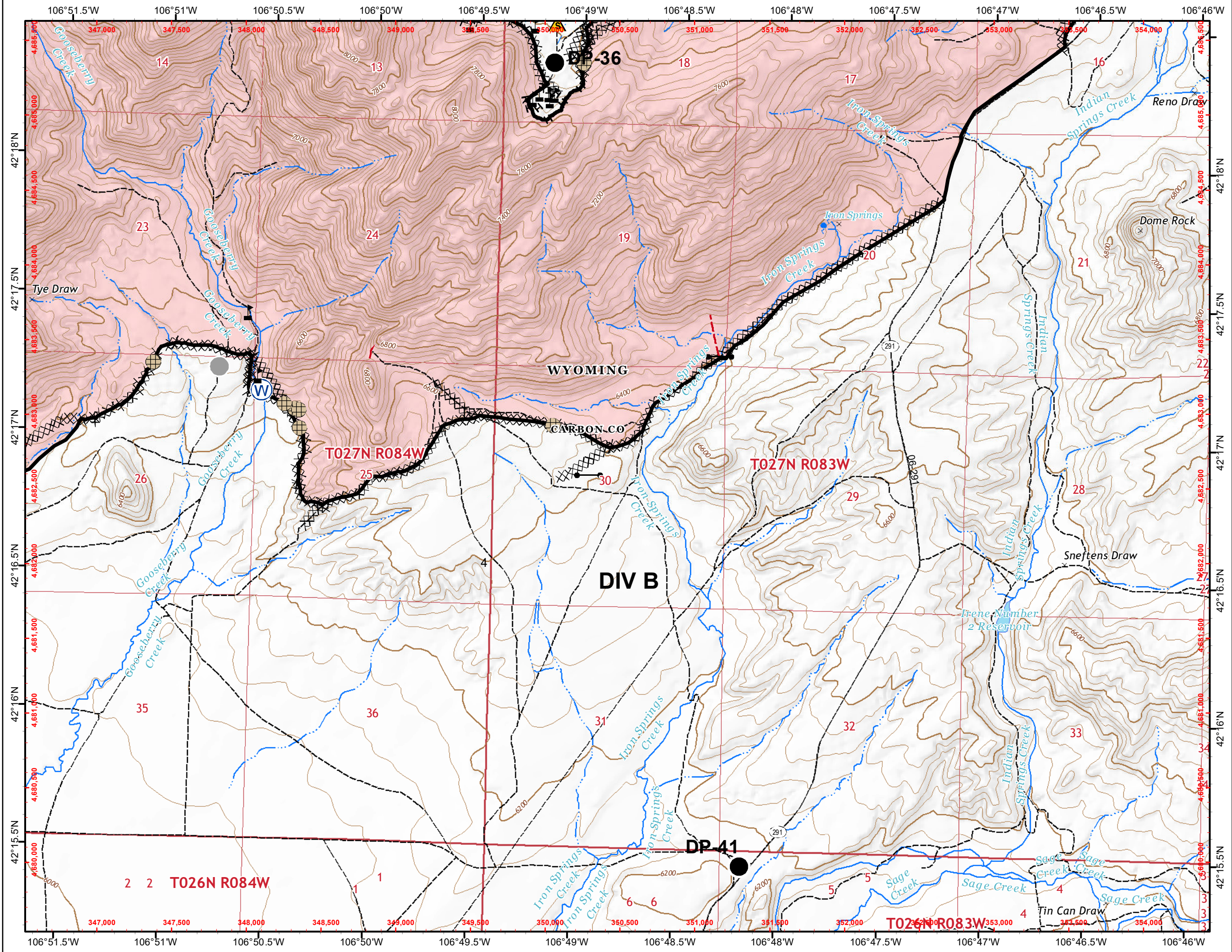


Page 4

0 0.25 0.5
 Miles



AJB : 5-Sep-2019 @ 18:12
 NAD 1983 UTM Zone 13N

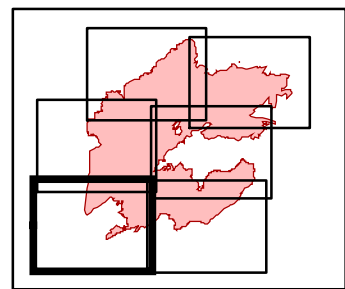


Pedro Mountain

IAP MAP WY-RAD-019341

9/6/19 - 9/10/19
Appx. 23,408 acres
MMA @ 0920 hrs on 9/4/19
88% Contained

- Drop Point
- ⊗ Fence - Cut/Damaged
- ⚑ Value at Risk
- ▭ Uncontrolled Fire Edge
- Completed Line
- ⊗ Completed Dozer Line
- R - Road as Completed Line
- - - Fence
- - - BLM WY Roads NAIP 2009
- ▭ Wildfire Daily Fire Perimeter

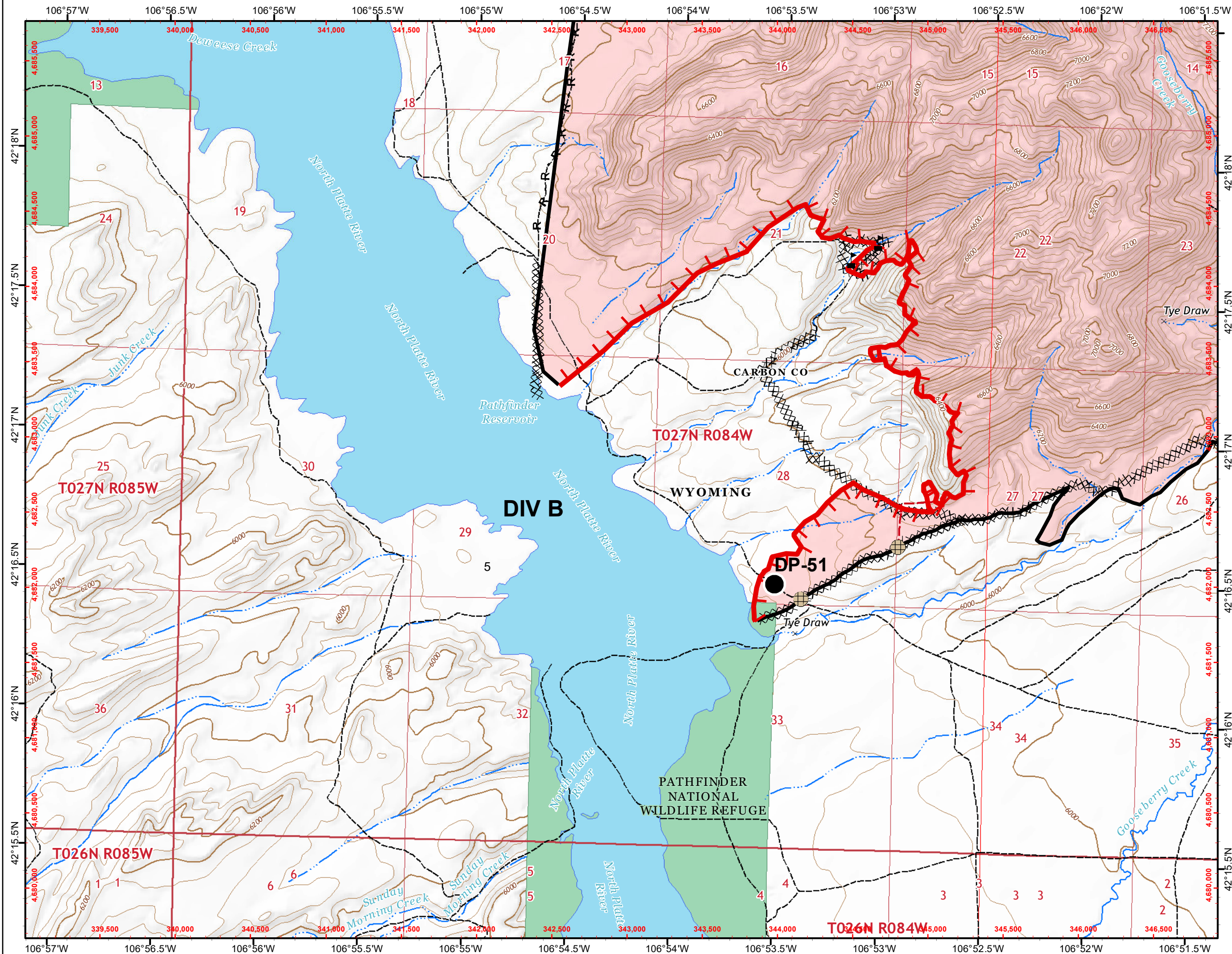


Page 5

0 0.25 0.5
Miles



AJB : 5-Sep-2019 @ 18:12
NAD 1983 UTM Zone 13N

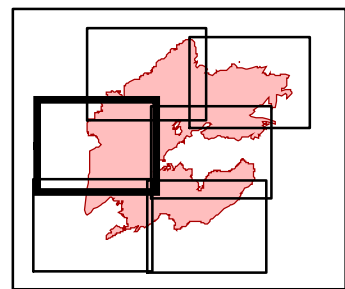


Pedro Mountain

IAP MAP WY-RAD-019341

9/6/19 - 9/10/19
Appx. 23,408 acres
MMA @ 0920 hrs on 9/4/19
88% Contained

- Drop Point
- ⊗ Fence - Cut/Damaged
- ⊗ Fire Origin
- Helispot
- ▲ Value at Risk
- ⎓ Division Break
- Completed Line
- XXXX Completed Dozer Line
- H - Completed Hand Line
- R - Road as Completed Line
- Access or Improved Road
- - - BLM WY Roads NAIP 2009
- Wildfire Daily Fire Perimeter



Page 6

0 0.25 0.5
Miles



AJB : 5-Sep-2019 @ 18:13
NAD 1983 UTM Zone 13N

