

Pedro Mountain
REPAIR STATUS
WY-RAD-019341
9/9/19

Appx. 23,408 acres
From MMA on 9/4/19
@ 0920 hrs

95% Contained

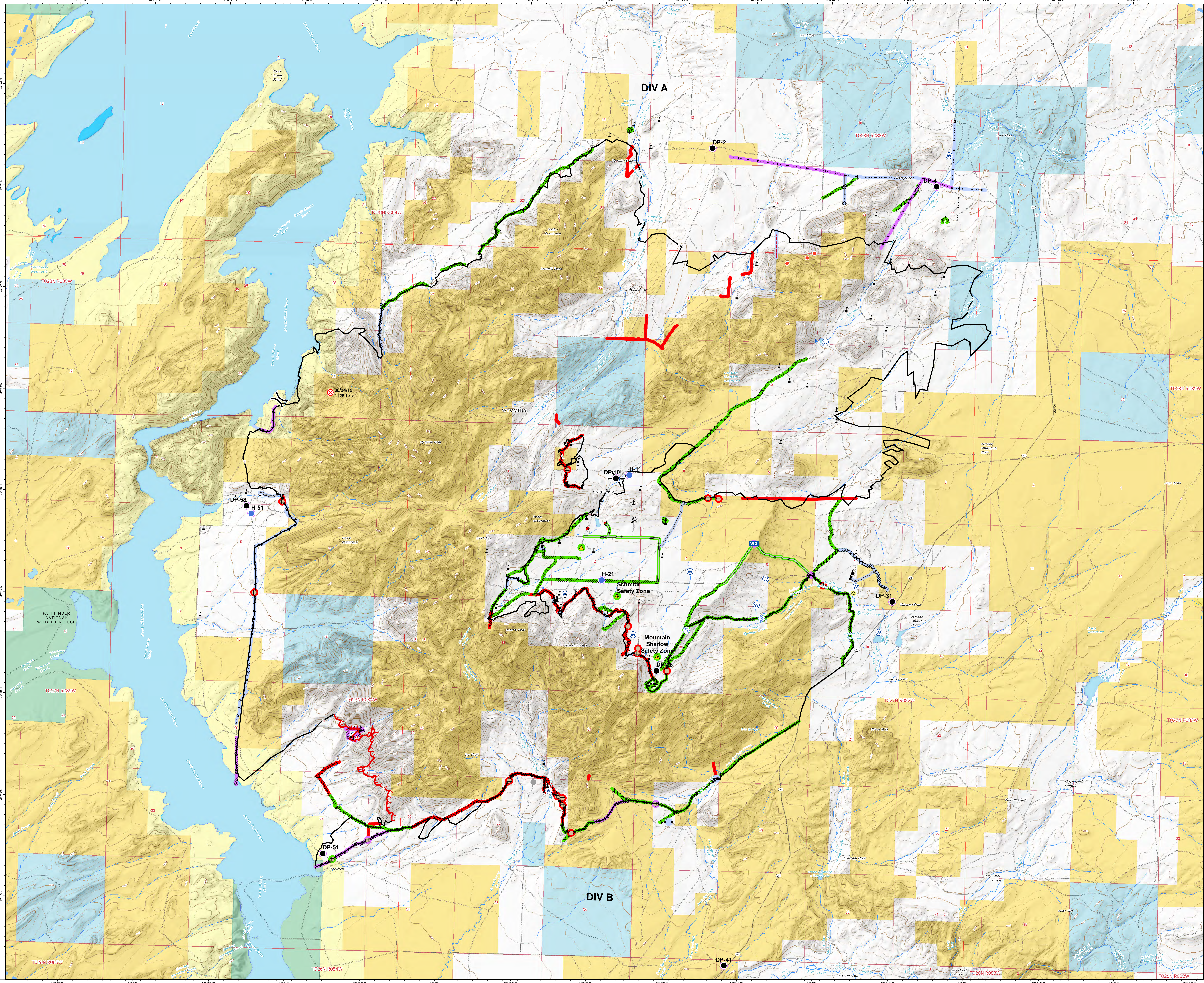
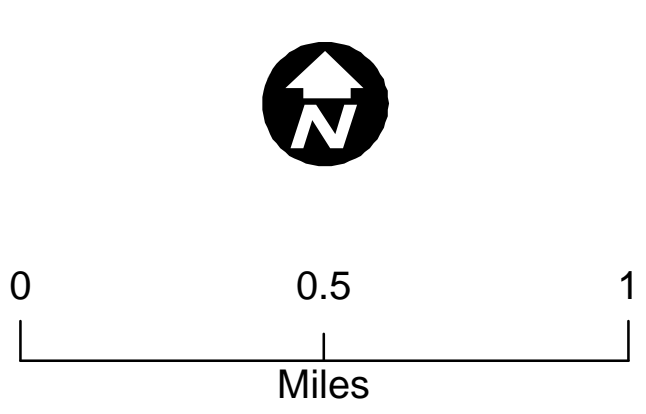


Legend

- Drop Point
- ⊕ Fence - Cut/Damaged
- ⊗ Fire Origin
- ↔ Gate
- ⚠ Hazard
- Helispot
- Hot Spot
- WX Mobile Weather Unit
- ⚠ Safety Zone
- ⊙ Staging Area
- W Water Source
- ⚠ Value at Risk
- Other
- () Division Break
- Uncontrolled Fire Edge
- Completed Line
- ⊗ Completed Dozer Line
- H · H · H · H Completed Hand Line
- R · R · R · R Road as Completed Line
- Access or Improved Road
- Temporary Flight Restriction
- · · · · Highlighted Manmade Feature
- Fence
- Other
- Completed - Inspected
- Repair Needed
- No Repair Needed
- Unknown
- Completed - Inspected
- Repair Needed
- No Repair Needed
- Unknown
- Secondary Hwy. (Ind. Co.)
- BLM WY Roads NAIP 2009

WY Surface Management Agency

- Bureau of Land Management
- Bureau of Reclamation
- Fish & Wildlife Service
- Private
- State
- Water



DIV A

DIV B

08/24/19
1126 hrs

DP-10

H-21

Schmidt
Safety Zone

Mountain
Shadow
Safety Zone

DP-31

DP-58

H-51

DP-51

DP-41

DP-2

DP-4

PATHFINDER
NATIONAL
WILDLIFE REFUGE

T027N R085W

T027N R085W

T026N R084W

T026N R083W

T027N R082W

T026N R082W