
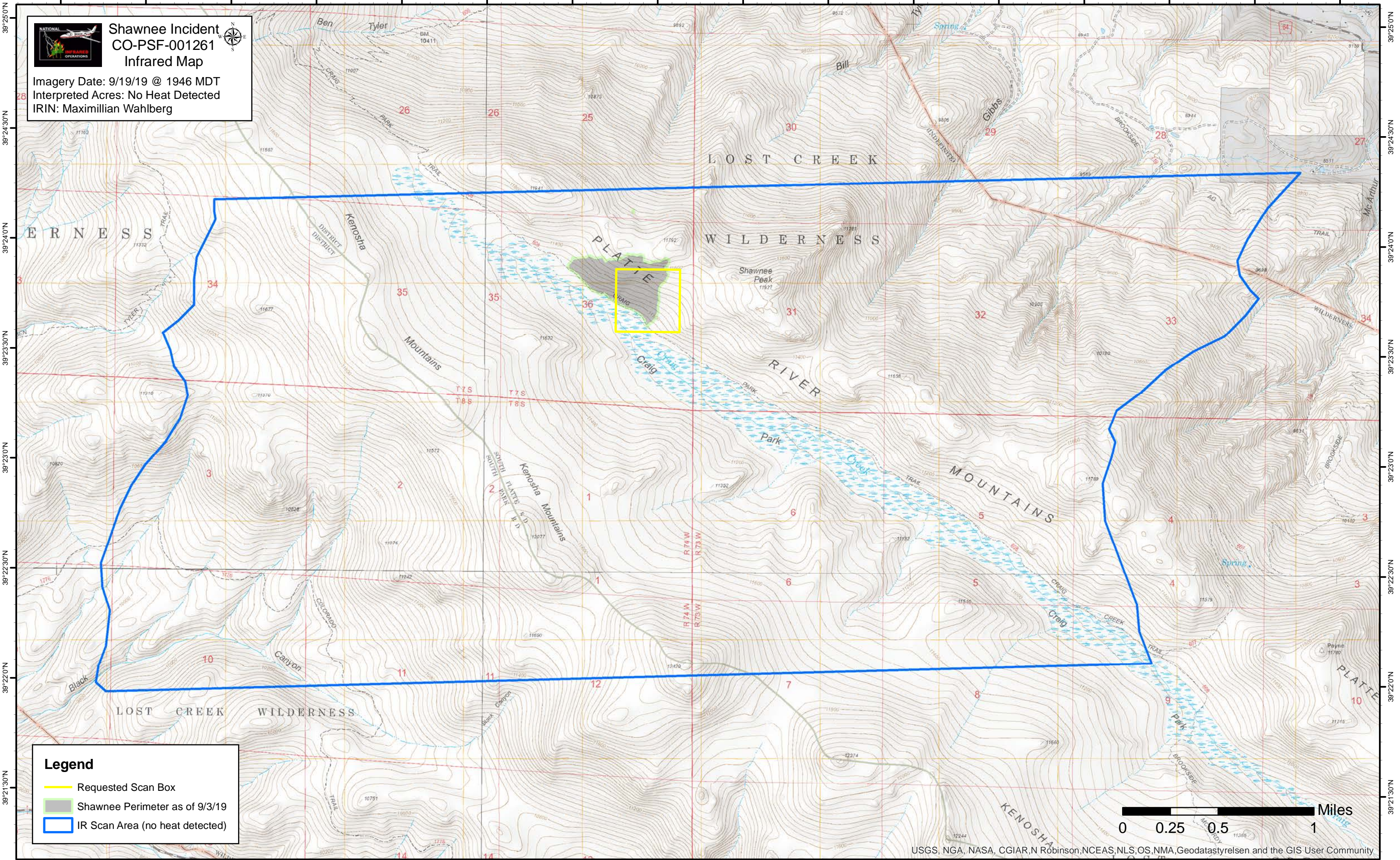


105°40'0"W 105°39'30"W 105°39'0"W 105°38'30"W 105°38'0"W 105°37'30"W 105°37'0"W 105°36'30"W 105°36'0"W 105°35'30"W 105°35'0"W 105°34'30"W 105°34'0"W 105°33'30"W 105°33'0"W 105°32'30"W

 **Shawnee Incident**  
**CO-PSF-001261**  
**Infrared Map**  
Imagery Date: 9/19/19 @ 1946 MDT  
Interpreted Acres: No Heat Detected  
IRIN: Maximillian Wahlberg



**Legend**  
— Requested Scan Box  
— Shawnee Perimeter as of 9/3/19  
— IR Scan Area (no heat detected)



USGS, NGA, NASA, CGIAR, N Robinson, NCEAS, NLS, OS, NMA, Geodastystrelsen and the GIS User Community

105°40'0"W 105°39'30"W 105°39'0"W 105°38'30"W 105°38'0"W 105°37'30"W 105°37'0"W 105°36'30"W 105°36'0"W 105°35'30"W 105°35'0"W 105°34'30"W 105°34'0"W 105°33'30"W 105°33'0"W 105°32'30"W