

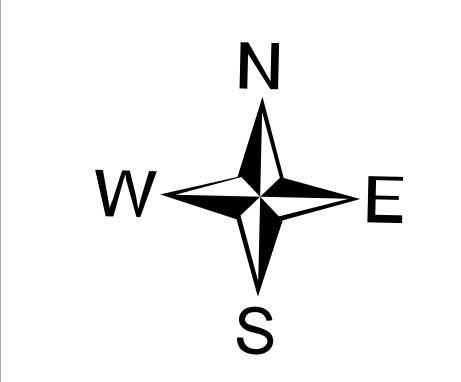
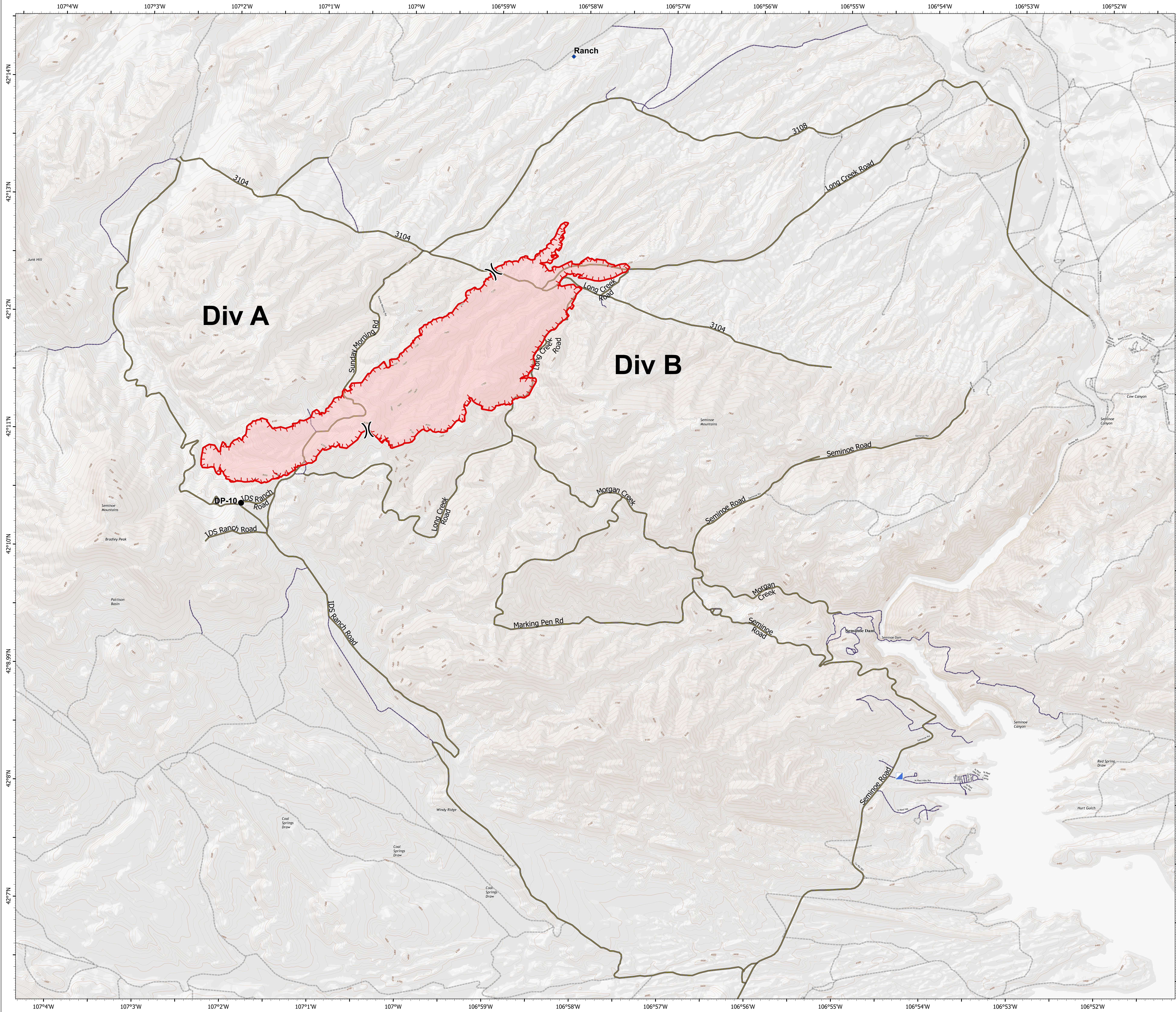
# Transportation

Bradley Fire  
WY-RAD-200527  
8/11/2020

1,783 acres at 1817 hrs on 8/9



- Dip Site
- Drop Point
- Incident Command Post
- Division Break
- Uncontrolled Fire Edge
- Controlled access
- Highway or ramp
- Local connector
- Local or 4WD road
- Tunnel
- Ferry
- Local or 4WD road
- Hillshade\_045
- Hillshade\_110
- Hillshade\_160
- Hillshade\_200
- Hillshade\_254
- Main\_Fire\_Roads
- Surrounding\_Roads



jzm  
8/10/2020 2105  
North American 1983 Datum. LatLong  
Grid