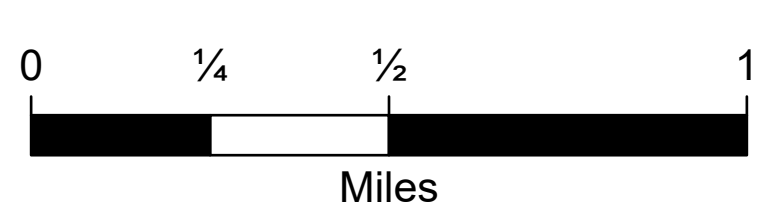


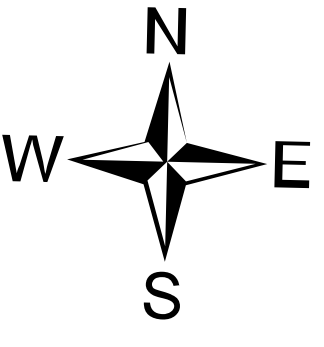
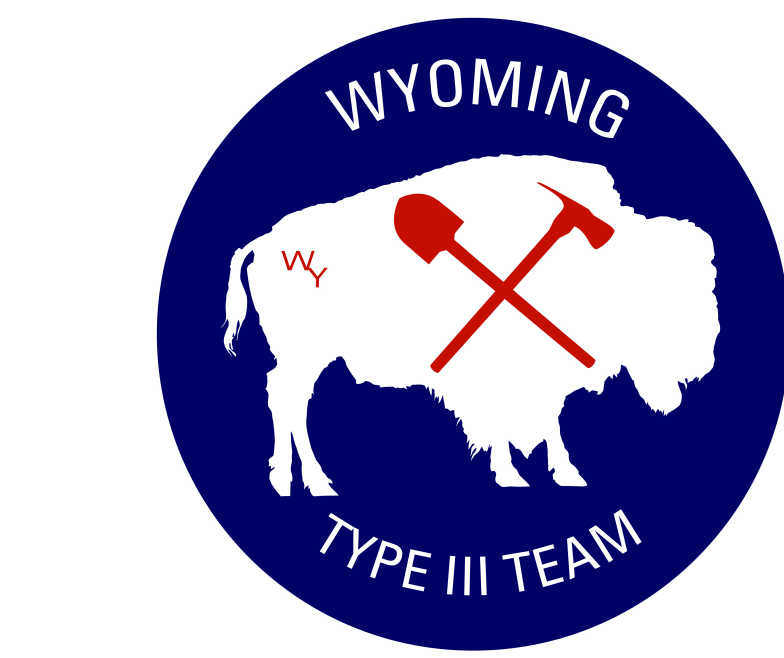
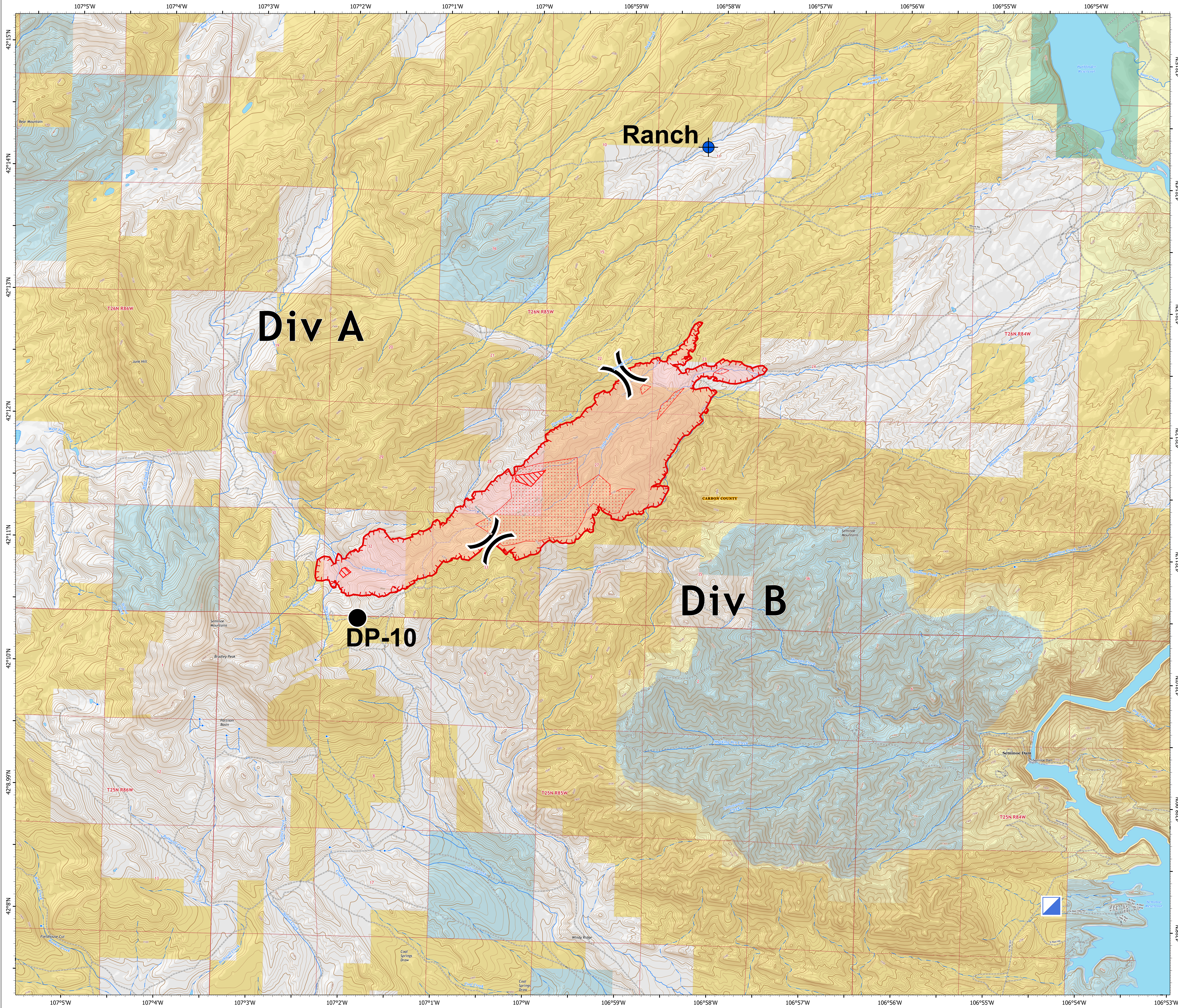
Briefing Map

Bradley Fire
WY-RAD-200527
8/11/2020

1,783 IR acres at
18:17 hrs on 8/9



- Dip Site
- Drop Point
- Incident Command Post
- Division Break
- Uncontrolled Fire Edge
- IR Intense Heat
- IR Scattered Heat
- County Boundary
- Transportation
 - Local or 4WD road
- Surface Management
 - Bureau of Land Management (BLM)
 - Bureau of Reclamation (BOR)
 - State
 - US Fish and Wildlife Service (USFWS)
 - Private



skw
8/10/2020 2010
North American 1983 Datum. LatLong
Grid